

**NEW**

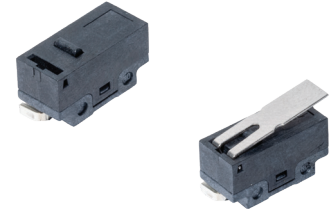
# ZPA Series Surface Mount Snap-acting Switches

## Features/Benefits

- **Reliable snap-acting mechanism**
- **Long electrical and mechanical life**
- **Mini packaging size**
- **Surface mount terminations**
- **RoHS compatible & compliant**

## Typical Applications

- **PCB detection switch**
- **Communication devices**
- **Testing equipment**
- **Security/Alarm systems**
- **Consumer electronics**



## Specifications

CONTACT RATING: 0.1A @ 125 V AC 30 V DC  
 ELECTRICAL LIFE: 1,000,000 cycles @ 0.1A  
 MECHANICAL LIFE: 1,000,000 cycles  
 INSULATION RESISTANCE: 100 M ohm min.  
 DIELECTRIC STRENGTH: 500 Vrms  
 OPERATING TEMPERATURE: -40°C to +85°C  
 STORAGE TEMPERATURE: -45°C to +85°C  
 OPERATING FORCE: 80 or 150 grams

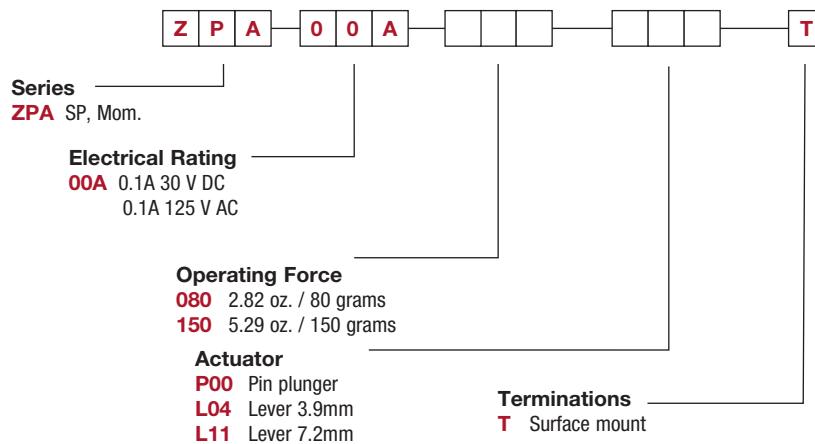
## Materials

CASE/COVER: LCP  
 ACTUATOR: LCP  
 MOVABLE CONTACT: Silver alloy  
 STATIONARY CONTACTS: Silver alloy  
 TERMINALS: Brass, silver plated.

**NOTE:** Specifications and materials listed above are for switches with standard options.

## Build-A-Switch

To order, simply select desired option from each category and place in the appropriate box. For additional options not shown in catalog, consult Customer Service Center.

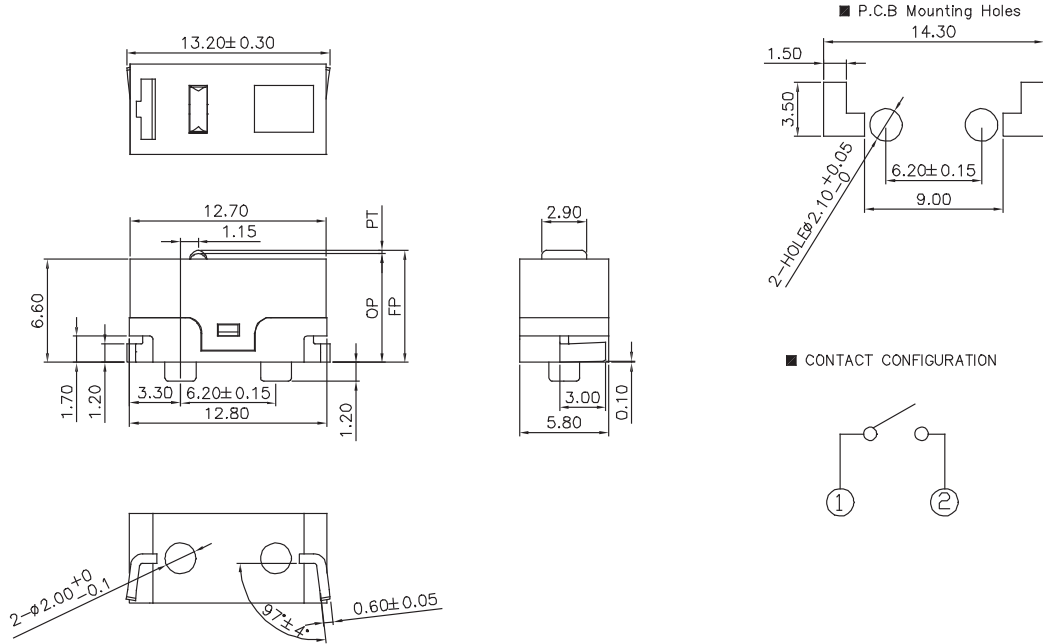


# ZPA Series Surface Mount Snap-acting Switches

**NEW**

## SERIES

**ZPA** SURFACE MOUNT SNAP-ACTING SWITCHES – SP MOMENTARY



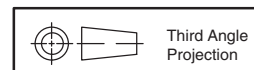
Snap-acting

## ELECTRICAL RATING

Option Code	Silver Contacts
<b>00A</b>	0.1A 30 V DC 0.1A 125 V AC

## OPERATING FORCE

OPTION CODE	BASIC SWITCH OPERATING FORCE (OZ./GRAMS)
<b>080</b>	2.82 80
<b>150</b>	5.29 150



Dimensions are shown: mm  
Specifications and dimensions subject to change



15 Apr 20

J-78

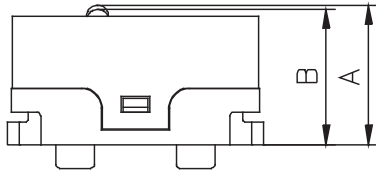
www.ckswitches.com

**NEW**

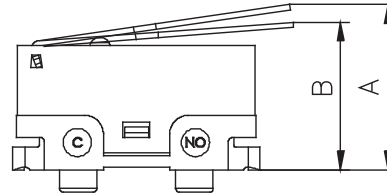
# ZPA Series Surface Mount Snap-acting Switches

## ACTUATOR

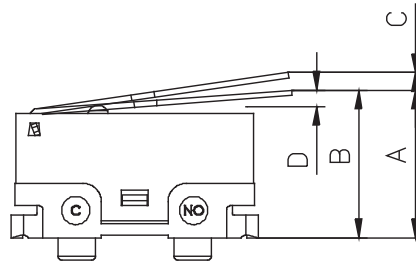
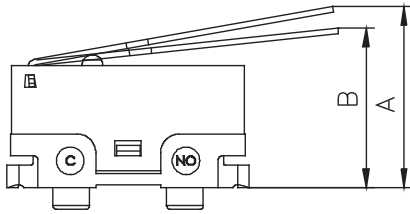
**P00** PIN PLUNGER



**L04** LEVER  
3.9MM



**L11** LEVER  
7.2MM

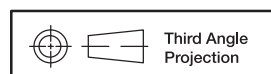


### SWITCH CHARACTERISTICS

OPTION CODE	ACTUATOR	OPE. FORCE MAX.	REL. FORCE MIN.	'A' FP MAX	'B' OP MAX	'C' PT MAX	'D' OT MIN	MOVEMENT DIFFERENTIAL
80	P00	Max. 80 gf	Min. 21 gf	Max. 7.35mm	7.0±0.2 mm	Max. 0.62 mm	Min. 0.2 mm	Max. 0.12 mm
	L04	Max. 30 gf	Min. 5 gf	Max. 10.1 mm	7.9±0.8 mm	Max. 3.0 mm	Min. 0.6 mm	Max. 0.8 mm
	L11	Max. 25 gf	Min. 4 gf	Max. 11.7 mm	8.68±1.0 mm	Max. 4.4 mm	Min. 0.6 mm	Max. 0.8 mm
150	P00	Max. 150 gf	Min. 35 gf	Max. 7.35 mm	7.0±0.2 mm	Max. 0.62 mm	Min. 0.2 mm	Max. 0.12 mm
	L04	Max. 50 gf	Min. 8 gf	Max. 10.1 mm	7.9 ± 0.8 mm	Max. 3.0 mm	Min.0.6 mm	Max. 0.8 mm
	L11	Max. 39 gf	Min. 6 gf	Max. 11.7 mm	8.68 ±1.0 mm	Max. 4.4 mm	Min. 0.6 mm	Max. 0.8 mm



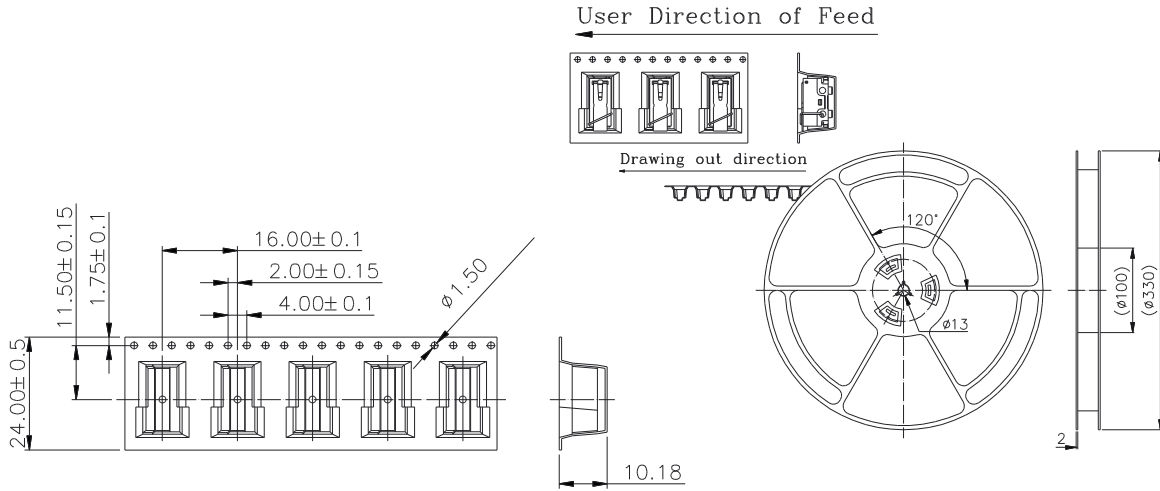
**Snap-acting**



Third Angle Projection

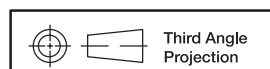
Dimensions are shown: Inch (mm)  
Specifications and dimensions subject to change

# TAPE AND REEL



Package: 400pcs/ reel

Snap-acting



Third Angle Projection

Dimensions are shown: Inch (mm)  
Specifications and dimensions subject to change