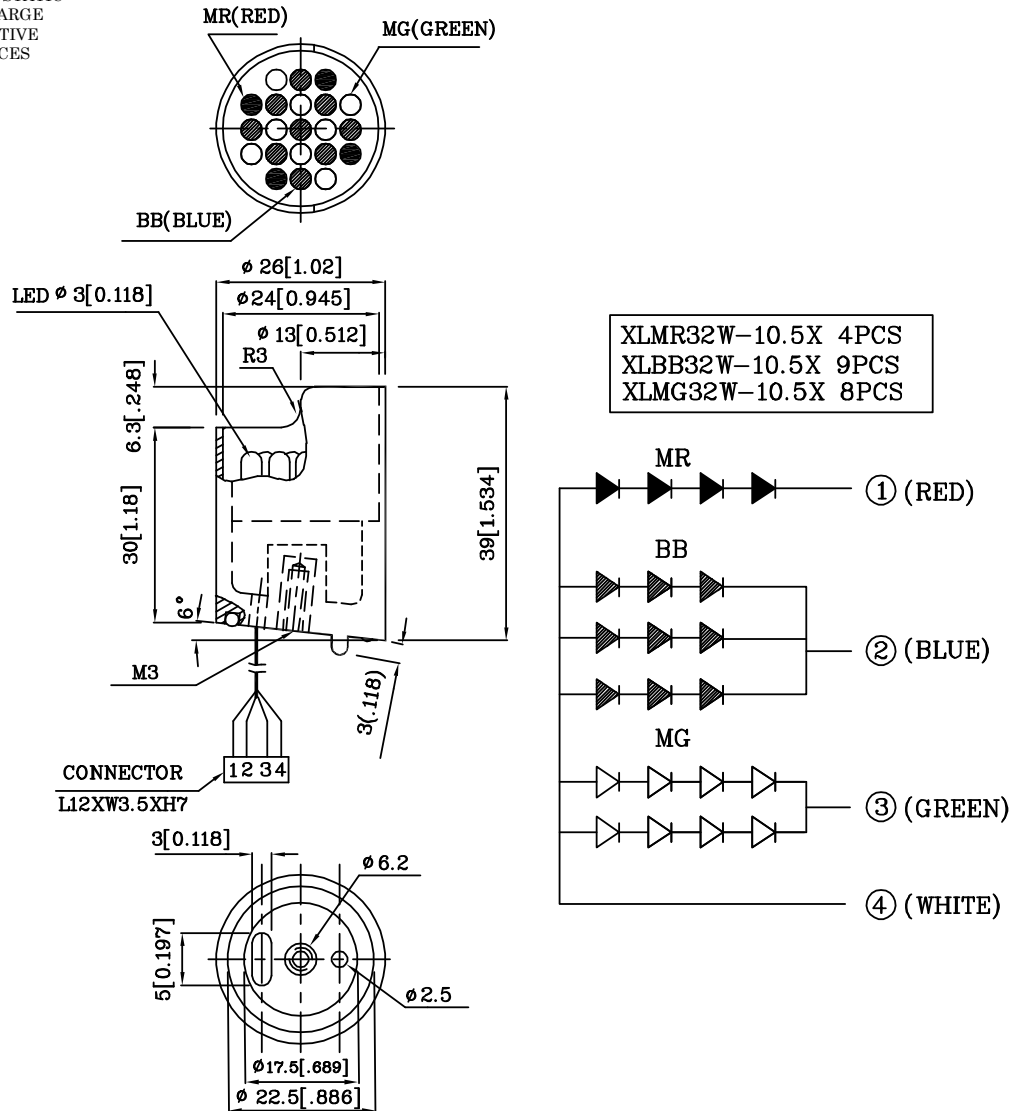


Features

- HIGH VISIBILITY.
- WATER PROOF PACKAGE WITH HOOD SUITABLE FOR OUTDOOR AND INDOOR INFORMATION BOARDS.
- CAN PRODUCE ANY COLOR IN VISIBLE SPECTRUM, INCLUDING WHITE LIGHT.
- RoHS COMPLIANT.



ATTENTION
OBSERVE PRECAUTIONS
FOR HANDLING
ELECTROSTATIC
DISCHARGE
SENSITIVE
DEVICES



Notes:

1. All dimensions are in millimeters (inches).
2. Tolerance is $\pm 0.25(0.01)$ unless otherwise noted.

Electrical / Optical Characteristics at TA=25°C

Symbol	Parameter	Device	Type	Min.	Typ.	Max.	Units	Test Conditions
Iv	Luminous Intensity	XK4MR9BB8MGW19	MR	650	1790		mcd	IF=20mA
			BB	2800	3690			IF=60mA
			MG	480	1195			IF=40mA
2θ 1/2	Viewing Angle				40		deg	
VF	Forward Voltage		MR		7.4	10	V	IF=20mA
			BB		10.95	12.6		IF=60mA
			MG		8.8	10		IF=40mA
λ P	Peak Wavelength		MR		660		nm	IF=20mA
			BB		468			IF=60mA
			MG		565			IF=40mA
λ D	Dominant Wavelength	MR		640		nm	IF=20mA	
		BB		470			IF=60mA	
		MG		568			IF=40mA	
Δλ 1/2	Spectral Line Half-width	MR		20		nm	IF=20mA	
		BB		25			IF=60mA	
		MG		30			IF=40mA	
IR	Reverse Current					60	uA	VR = 5V

Absolute Maximum Ratings at TA=25°C

Parameter	Type	Units	
Total Power dissipation	MR	1700	mW
	BB		
	MG		
DC Forward Current	MR	25	mA
	BB	75	
	MG	50	
Reverse Voltage	5	V	
Operating Temperature	-40 To +70	°C	
Storage Temperature	-40 To +85	°C	