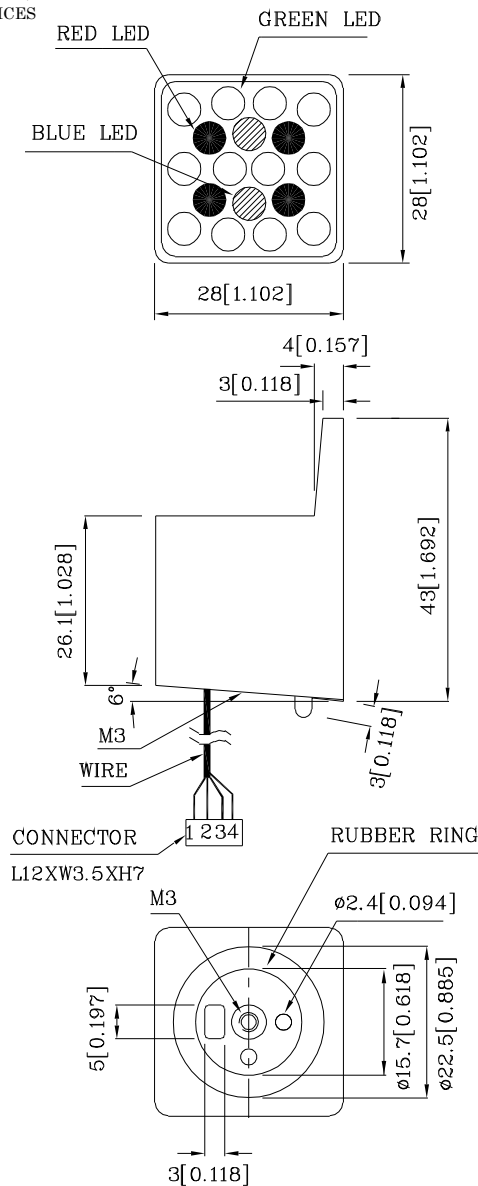


**Features**

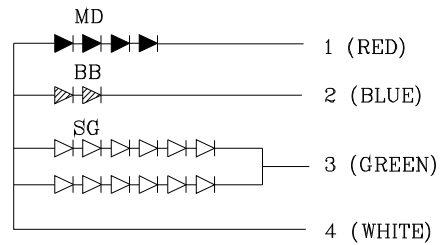
- HIGH VISIBILITY.
- WATER PROOF PACKAGE WITH HOOD SUITABLE FOR OUTDOOR AND INDOOR INFORMATION BOARDS.
- CAN PRODUCE ANY COLOR IN VISIBLE SPECTRUM, INCLUDING WHITE LIGHT.
- RoHS COMPLIANT.



**ATTENTION**  
OBSERVE PRECAUTIONS  
FOR HANDLING  
ELECTROSTATIC  
DISCHARGE  
SENSITIVE  
DEVICES



XLMD17W-11.7X4PCS  
XLBB17W-11.7X2PCS  
XLSG17W-11.7X12PCS



**Notes:**

1. All dimensions are in millimeters (inches).
2. Tolerance is  $\pm 0.25(0.01)$  unless otherwise noted.

**Electrical / Optical Characteristics at TA=25°C**

Symbol	Parameter	Device	Wafer	Min.	Typ.	Max.	Units	Test Conditions
Iv	Luminous Intensity	XK4MD2BB12SGW77	MD	480	1095		mcd	IF=20mA
			BB	280	647			IF=20mA
			SG	110	297			IF=40mA
2 θ1/2	Viewing Angle				40		deg	
VF	Forward Voltage		MD		7.6	10	V	IF=20mA
			BB		7.3	8.4		IF=20mA
			SG		12.6	15		IF=40mA
λ P	Wavelength of Peak Emission		MD		640		nm	IF=20mA
			BB		468			IF=20mA
		SG		574		IF=40mA		
λ D	Wavelength of Dominant Emission	MD		628		nm	IF=20mA	
		BB		470			IF=20mA	
		SG		568			IF=40mA	
Δλ 1/2	Spectral Line Full Width At Half-Maximum	MD		27		nm	IF=20mA	
		BB		25			IF=20mA	
		SG		26			IF=40mA	
IR	Reverse Current					40	uA	VR = 5V

**Absolute Maximum Ratings at TA=25°C**

Parameter	Value			Units
	MD	BB	SG	
Total Power dissipation	1200			mW
DC Forward Current	30	25	25	mA
Reverse Voltage	5			V
Operating Temperature	-40 To +70			°C
Storage Temperature	-40 To +85			°C