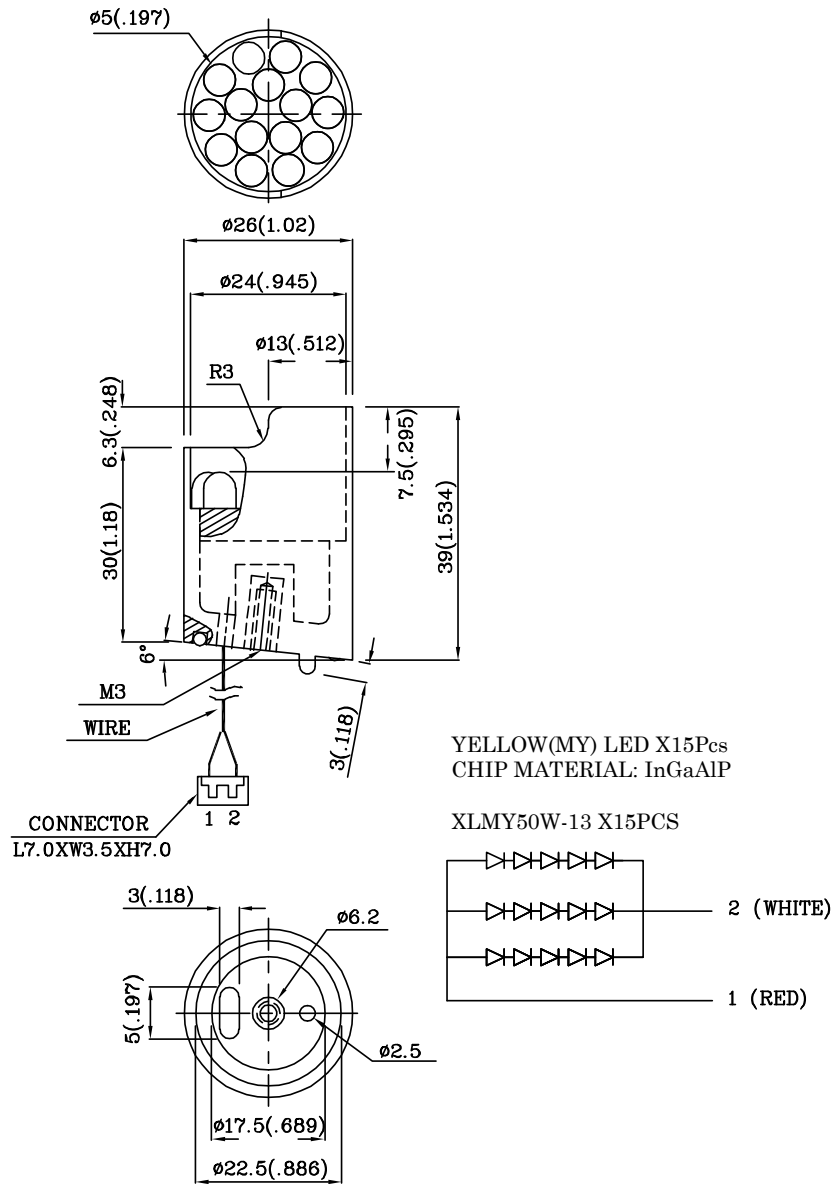


**Features**

- HIGH VISIBILITY.
- NO. OF BUILT-IN 5mm LED LAMPS: YELLOW 15PCS.
- WATER PROOF PACKAGE WITH HOOD SUITABLE FOR OUTDOOR AND INDOOR INFORMATION BOARDS.
- CAN PRODUCE ANY COLOR IN VISIBLE SPECTRUM, INCLUDING WHITE LIGHT.
- RoHS COMPLIANT.



Notes:

1. All dimensions are in millimeters (inches).
2. Tolerance is  $\pm 0.25(0.01)$  unless otherwise noted.

**Electrical / Optical Characteristics at TA=25°C**

| Symbol | Parameter                                | Device    | Min  | Typ. | Max. | Units | Test Conditions |
|--------|--|-----------|------|------|------|-------|-----------------|
| Iv     | Luminous Intensity                       | XK15MYW22 | 4700 | 6990 | -    | mcld  | IF=60mA         |
| 2θ1/2  | Viewing Angle                            |           | -    | 40   | -    | deg   | -               |
| VF     | Forward Voltage                          |           | -    | 10   | 12   | V     | IF=60mA         |
| λ P    | Wavelength of Peak Emission              |           | -    | 590  | -    | nm    | IF=60mA         |
| λ D    | Wavelength of Dominant Emission          |           | -    | 588  | -    | nm    | IF=60mA         |
| Δλ 1/2 | Spectral Line Full Width At Half-Maximum |           | -    | 20   | -    | nm    | IF=60mA         |
| IR     | Reverse Current                          |           | -    | -    | 30   | uA    | VR = 5V         |

**Absolute Maximum Ratings at TA=25°C**

| Parameter             | Type           | Units |
|-----------------------|----------------|-------|
| Power dissipation     | 900            | mW    |
| DC Forward Current    | 90             | mA    |
| Reverse Voltage       | 5              | V     |
| Operating Temperature | -40°C To +70°C |       |
| Storage Temperature   | -40°C To +85°C |       |