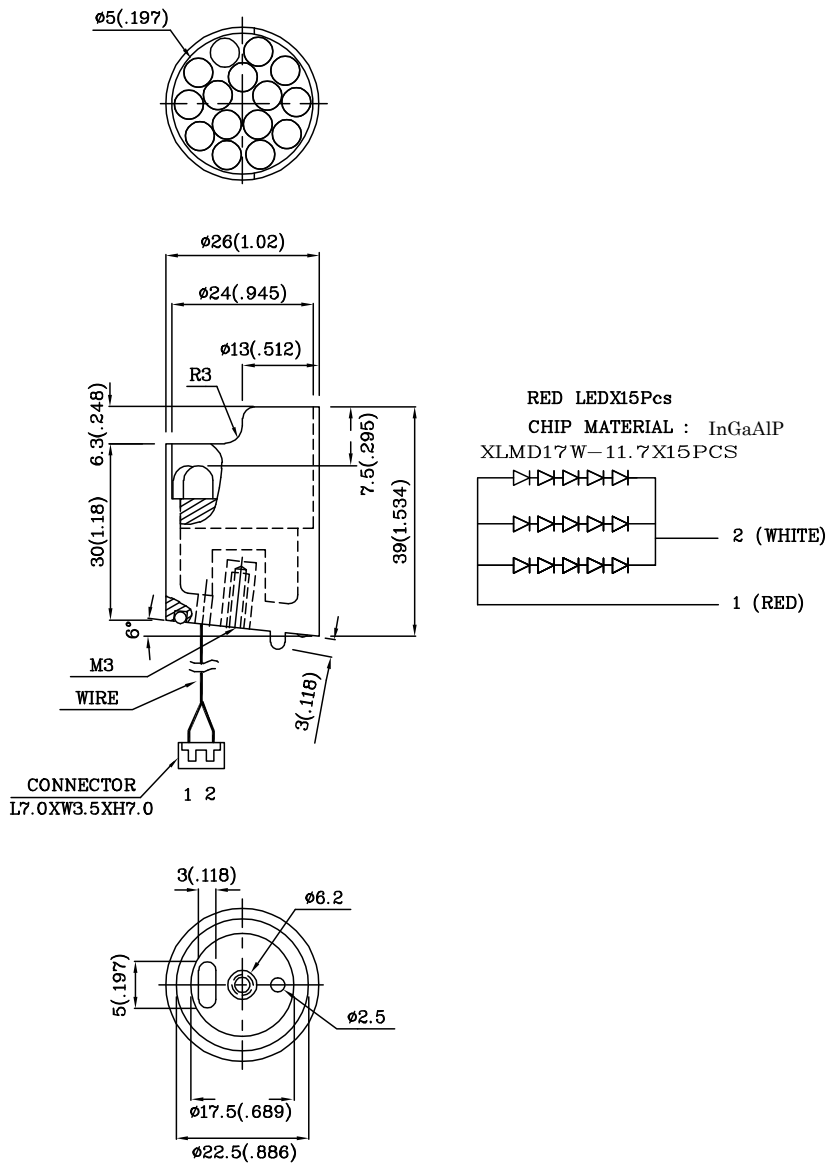


Features

- HIGH VISIBILITY.
- NO. OF BUILT-IN 5mm LED LAMPS: RED 15 PCS.
- WATERPROOF PACKAGE WITH HOOD SUITABLE FOR OUTDOOR AND INDOOR INFORMATION BOARDS.
- CAN PRODUCE ANY COLOR IN VISIBLE SPECTRUM, INCLUDING WHITE LIGHT.
- RoHS COMPLIANT.



Notes:

1. All dimensions are in millimeters (inches).
2. Tolerance is $\pm 0.25(0.01)$ unless otherwise noted.

Electrical / Optical Characteristics at TA=25°C

Symbol	Parameter	Device	Min	Typ.	Max.	Units	Test Conditions
IV	Luminous Intensity	XK15MDW51	2800	5490	-	mcđ	IF=60mA
2θ1/2	Viewing Angle		-	40	-	deg	-
VF	Forward Voltage		-	9.5	12.5	V	IF=60mA
λ P	Wavelength of Peak Emission		-	640	-	nm	IF=60mA
λ D	Wavelength of Dominant Emission		-	628	-	nm	IF=60mA
Δλ 1/2	Spectral Line Full Width At Half-Maximum		-	27	-	nm	IF=60mA
IR	Reverse Current		-	-	30	uA	VR = 5V

Absolute Maximum Ratings at TA=25°C

Parameter	Type	Units
Power dissipation	900	mW
DC Forward Current	90	mA
Reverse Voltage	5	V
Operating Temperature	-40°C To +70°C	
Storage Temperature	-40°C To +85°C	