

# Gas Discharge Tubes

## 2 Electrode High Current Series (2N)

Part Numbering System | Specifications | Dimensions

### Part Numbering System

**WPGT** - **2N** **470** **B** **6** **L** **C** **TA**  
① ② ③ ④ ⑤ ⑥ ⑦ ⑧

① World Products Gas Discharge Tubes

② Series Code

2N = 2 Electrode High Current Series

③ DC Breakdown Voltage

70 = 70V  
75 = 75V  
90 = 90V  
120 = 120V  
130 = 130V  
145 = 145V  
180 = 180V  
230 = 230V  
250 = 250V  
300 = 300V  
350 = 350V  
400 = 400V  
470 = 470V

④ Diameter ("D" Dimension)

B = 8mm

⑤ Length ("T" Dimension)

6 = 6mm

8 = 8mm – High Voltage Series Only

⑥ Lead Type

B = No Leads

L = Axial lead (0.8mm lead diameter)

L1 = Axial lead (1.0mm lead diameter)

A1 = Radial lead (0.8mm lead diameter)

B1 = Radial lead (1.0mm lead diameter)

C1 = Radial lead Clip -in style (1.0mm lead diameter)

D1 = Radial Lead Clip -in style (0.8mm lead diameter)

⑦ Low Capacitance

(Only applicable for 2R & 2N, 70V – 145V)

Nil = Regular Capacitance of 1.5pf

C = Low capacitance of 0.8pf

⑧ Taping Specifications

TA = Taped (Ammo Box)

TR = Tape & Reel

### Specifications

Base Part Number	DC Breakdown Voltage (V)	Maximum Impulse Breakdown Voltage (V)		Maximum Impulse Discharge Current (8/20 μ s) (KA)		Alternating Discharge Current (A)		Impulse Life (10/1000μ s) (100A) times	DC Holdover Voltage (V)	Minimum Insulation Resistance (G?)	Maximum Capacitance (pf)
		100V/μ s	100V/μ s	1000V/μ s	1 time	10 times (5 times each polarity)	50Hz, 1 sec				
WPGT-2N70	70 ± 20%	500	600	20	15	20	65	500	52	10	1.5**
WPGT-2N75	75 ± 20%	500	600						52	10	1.5**
WPGT-2N90	90 ± 20%	500	600						52	10	1.5**
WPGT-2N120	120 ± 15%	500	700						52	10	1.5**
WPGT-2N130	130 ± 15%	500	700						52	10	1.5**
WPGT-2N145	145 ± 15%	500	700						52	10	1.5**
WPGT-2N180	180 ± 15%	500	700						80	10	1.5
WPGT-2N230	230 ± 15%	500	700						80	10	1.5
WPGT-2N250	250 ± 15%	500	700						80	10	1.5
WPGT-2N300	300 ± 15%	700	900						150	10	1.5
WPGT-2N350	350 ± 15%	700	900						150	10	1.5
WPGT-2N400	400 ± 15%	800	1000						150	10	1.5
WPGT-2N470	470 ± 15%	1000	1200						150	10	1.5

UL497B Recognized, File # E135015

\*DC Breakdown Voltage DC Measuring Voltage

70-90V 50V  
120-400V 100V  
470V 250V

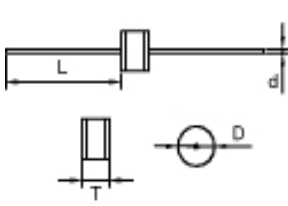
\*\* May be offered with 0.8pf capacitance rating.  
See part numbering system for special coding.

### Dimensions

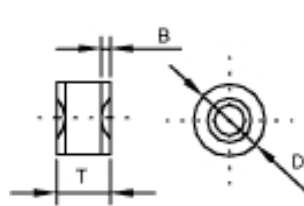
Unit: mm

Item	Dimensions
D	8.0 ± 0.3
T	6.0 ± 0.3
d	0.8 or 1.0 ± 0.05
L	24 Min.

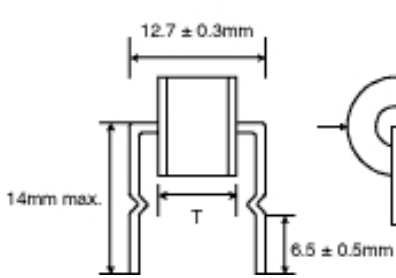
L TYPE (d) = 0.8mm  
L1 TYPE (d) = 1.0mm



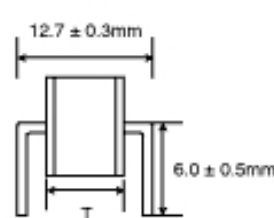
B TYPE



C1 TYPE (d) = 1.0mm  
D1 TYPE (d) = 0.8mm



A1 TYPE (d) = 0.8mm  
B1 TYPE (d) = 1.0mm



### Gas Discharge Tubes

#### General Characteristics

##### Features

Temperature Rating

100% Inspection

RoHS Information

Solderability

Part Marking

Terms and Definitions

2 Electrode Mini (2RM)

2 Electrode Standard and High Voltage (2R)

2 Electrode High Current (2N)

2 Electrode Extremely High Current Series (20B)

2 Electrode Switching Series (2T)

3 Electrode Mini (3RM) and Standard (3R) Series

2 Electrode Surface Mount

Mini (2SM), Surface Mount (2S),

Surface Mount Mini Square (2SS)

and Surface Mount Chip (4532) Series

3 Electrode Surface Mount Mini

(3SM and 3SSM) Series

#### Packaging

Standard Bulk Packaging

Tape & Reel Specifications

Home