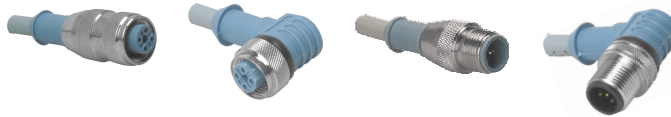
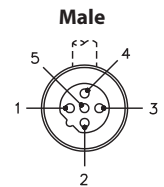
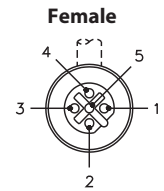


3 and 5-Wire Cordsets, Reverse Key (B-Code)

- NEMA 1, 3, 4, 6P
- IEC IP68 Protection
- 250 V, 4 A



Connector Style	Female Part Number	Male Part Number	Features	Pinout
<p>WAKW ..**</p>	<p>WAKW 4T-*/S626 WWAKW 4T-*/S626</p>	<p>WASW 4T-*/S626 WWASW 4T-*/S626</p>	<p>AWM PVC Grey, 3x20 AWG, 105°C, 5.1 mm OD, Cable #RF20017-*M†, flexlife*</p>	<p>1. BN 2. BU 4. GN/YE</p>
<p>WWAKW ..**</p>	<p>WAKW 4T-*/S821 WWAKW 4T-*/S821</p>	<p>WASW 4T-*/S821 WWASW 4T-2/S821</p>	<p>PVC Yellow, 3x18 AWG, 80°C, 250°C short term, 5.7 mm OD, Cable #RF04159-*M†, Weld Flash Immune, High Temp Immune</p>	<p>1. RD 2. RD/WH 4. GN</p>
<p>WAKW 4.5T-* WWAKW 4.5T-*</p>	<p>WAKW 4.5T-*/S101 WWAKW 4.5T-*/S101</p>	<p>WASW 4.5T-*/S101 WWASW 4.5T-*/S101</p>	<p>AWM PVC Grey, 4x22, 1x20 AWG, 105°C, 5.7 mm OD, Cable #RF50563-*M†, flexlife</p>	<p>1. BN 2. WH 3. BU 4. BK 5. GN/YE</p>
<p>WASW ..**</p>	<p>WAKW 4.5T-*/S618 WWAKW 4.5T-*/S618</p>	<p>WASW 4.5T-*/S618 WWASW 4.5T-*/S618</p>	<p>AWM TPE Grey, 5x22 AWG, 105°C, 5.7 mm OD, Cable #RF50909-*M†, Flexlife-20, High Flex - Over 20 Million Cycles</p>	<p>1. BN 2. WH 3. BU 4. BK 5. GY</p>
<p>WWASW ..**</p>	<p>WAKW 4.5T-*/S653 WWAKW 4.5T-*/S653</p>	<p>WASW 4.5T-*/S653 WWASW 4.5T-*/S653</p>	<p>AWM AWM PVC Grey, 5x22 AWG, 105°C, 5.7 mm OD, Cable #RF50609-*M†, EMI/RFI Protection</p>	<p>1. BN 2. WH 3. BU 4. BK 5. Drain</p>



* Length in meters. Standard cable lengths are 2, 4, 6, 8 and 10 meters. Consult factory for other lengths.

** Standard coupling nut material is nickel plated brass "WAKW.."; "WAKKW.." indicates nylon and "WAKVW.." indicates stainless steel.

† See Section N for **reelfast**® cable information.