

W57-XB1A7A10-15 ✓ ACTIVE

Potter & Brumfield W57

TE Internal #: 9-1423364-8

TE Internal Description: W57-XB1A7A10-15=CKTBKR,THERM,PB,SCW/QC

[View on TE.com >](#)



Relays, Contactors & Switches > Circuit Breakers



Circuit Breaker Type: **Thermal**

Circuit Function: **Series Trip**

Illuminated: **No**

Button Color: **White with Red Rate Marking (Vertical)**

Voltage Rating AC: **250 VAC**

Features

Product Type Features

Illumination Type	No Light
Product Type	Circuit Breaker
Actuator Type	Push to Reset
Circuit Breaker Type	Thermal
Illuminated	No

Configuration Features

	.441 x .394 in
Earthing Switch	Without
Circuit Function	Series Trip

Electrical Characteristics

Voltage Rating AC	250 VAC
Current Rating	15 A
Interrupt Capacity	1000A @ 250VAC/50VDC

Body Features

Button Color	White with Red Rate Marking (Vertical)
--------------	--

Contact Features

Pole Configuration	1
Trip Time at 200%	4 – 40 seconds



Termination Features

Termination Type	6.35 [.25] Straight Quick Connect Tab
------------------	---------------------------------------

Mechanical Attachment

Mounting Hardware Packaging	Assembled to Bushing
Mounting Options	Integral Mounting Nut
Mounting Bushing	9.8 x 9.6mm Long, Plastic
Mounting Type	Panel Mount

Product Compliance

[For compliance documentation, visit the product page on TE.com>](#)

EU RoHS Directive 2011/65/EU	Compliant with Exemptions
EU ELV Directive 2000/53/EC	Not Compliant
China RoHS 2 Directive MIIT Order No 32, 2016	Restricted Materials Above Threshold
EU REACH Regulation (EC) No. 1907/2006	Current ECHA Candidate List: JUL 2019 (201) Candidate List Declared Against: JAN 2018 (181) Does not contain REACH SVHC
EU REACH Regulation (EC) No. 1907/2006	Current ECHA Candidate List: JUL 2019 (201) Candidate List Declared Against: JAN 2018 (181)
Halogen Content	Not Yet Reviewed for halogen content
Solder Process Capability	Not applicable for solder process capability

Product Compliance Disclaimer

This information is provided based on reasonable inquiry of our suppliers and represents our current actual knowledge based on the information they provided. This information is subject to change. The part numbers that TE has identified as EU RoHS compliant have a maximum concentration of 0.1% by weight in homogenous materials for lead, hexavalent chromium, mercury, PBB, PBDE, DBP, BBP, DEHP, DIBP, and 0.01% for cadmium, or qualify for an exemption to these limits as defined in the Annexes of Directive 2011/65/EU (RoHS2). Finished electrical and electronic equipment products will be CE marked as required by Directive 2011/65/EU. Components may not be CE marked. Additionally, the part numbers that TE has identified as EU ELV compliant have a maximum concentration of 0.1% by weight in homogenous materials for lead, hexavalent chromium, and mercury, and 0.01% for cadmium, or qualify for an exemption to these limits as defined in the Annexes of Directive 2000/53/EC (ELV). Regarding the REACH Regulations, TE's information on SVHC in articles for this part number is still based on the European Chemical Agency (ECHA) 'Guidance on requirements for substances in articles' (Version: 2, April 2011), applying the 0.1% weight on weight concentration threshold at the finished product level. TE is aware of the European Court of Justice ruling of September 10th, 2015 also known as O5A (Once An Article Always An Article) stating that, in case of 'complex object', the threshold for a SVHC must be applied to both the product as a whole and simultaneously to each of the articles forming part of its composition. TE has evaluated this ruling based on the new ECHA "Guidance on requirements for substances in articles" (June 2017, version 4.0) and will be updating its statements accordingly.

Also in the Series | Potter & Brumfield W57

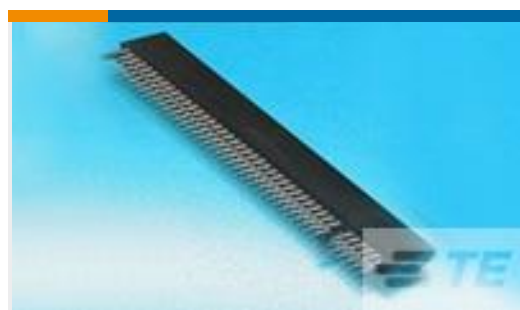


Circuit Breakers(26)

Customers Also Bought



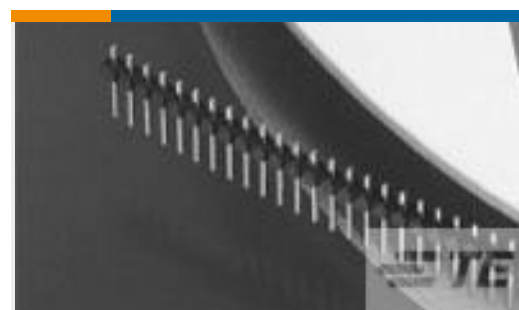
TE Model / Part #176280-9
UNIV POWER PLUG HSG
18P F/H



TE Model / Part #5530843-2
CONN SEC II 15 POS 100C
/L



TE Model / Part #1-640445-7
17P MTA156 HDR ASSY FL
/STR SN



TE Model / Part #5-146868-1
B/A REELED SRST HDR
ASSY 30 AU



TE Model / Part #1-440146-5
1.25mm WTB Socket,
Housing,15p



TE Model / Part #9-1423364-7
W57-XB1A7A10-10=CKTBKR,THERM,PB,



TE Model / Part #9-1423364-9
W57-XB1A7A10-20=CKTBKR,THERM,PB,
SCW/QC



TE Model / Part #9-1423364-6
W57-XB1A7A10-5=CKTBKR,THERM,PB,
SCW/QC



TE Model / Part #3-1415353-1
SR6M4024



TE Model / Part #2-1971793-3
NEW GI CONN2.5 PLUG
HSG 2P RED

Documents

CAD Files

Customer View Model

[ENG_CVM_9-1423364-8_1108.3d_igs.zip](#)

English

Customer View Model

[ENG_CVM_9-1423364-8_1108.3d_stp.zip](#)

English



Customer View Model

[ENG_CVM_9-1423364-8_1108.2d_dxf.zip](#)

English

[3D PDF](#)

English

Datasheets & Catalog Pages

[Industrial Relays Quick Reference Guide](#)

English

[Industrial Relays Quick Reference Guide](#)

Japanese

[Industrial Relays Quick Reference Guide](#)

[W57 Compact Push To Reset Only Thermal Circuit Breaker](#)

English