

Flush-type socket - VS-08-DSIV-L180-HYB SCO - 1456666

Please be informed that the data shown in this PDF Document is generated from our Online Catalog. Please find the complete data in the user's documentation. Our General Terms of Use for Downloads are valid (<http://phoenixcontact.com/download>)



Hybrid flush-type socket, Ethernet, 8-pos., M12 SPEEDCON, rear/screw mounting with M12 thread, with straight solder connection

M12 panel feed-through, rear mounting



Key Commercial Data

Packing unit	20 STK
Minimum order quantity	20 STK
GTIN	 4 046356 620307

Technical data

Dimensions

Length of the solder pin	2.3 mm
--------------------------	--------

Ambient conditions

Ambient temperature (operation)	-40 °C ... 85 °C
Degree of protection	IP67 (When plugged in)

General

Note	The electrical and mechanical data specified assume that the connector pair is correctly locked and mounted. If the connector is unlocked and if there is a danger of contamination, the connector must be sealed using a protective cap > IP54. Influences arising from litz wires, cables or PCB assembly must also be taken into consideration.
Rated current at 40°C	0.5 A (Data) 6 A (Power)
Rated voltage	30 V (Data) 30 V (Power)
Rated surge voltage	0.8 kV
Number of positions	8
Insulation resistance	> 100 MΩ

Flush-type socket - VS-08-DSIV-L180-HYB SCO - 1456666

Technical data

General

Coding	Y - hybrid
Signal type/category	Ethernet CAT5 (IEC 11801:2002)
Degree of pollution	3
Connection method	Solder pins
Insertion/withdrawal cycles	≥ 100
Torque	1.5 Nm ... 2 Nm (Housing, installation side)
Mounting type	PCB mounting M12 x 1

Material

Flammability rating according to UL 94	V0
Contact material	CuZn
Contact surface material	Au
Contact carrier material	PPA
Material, knurls	Zinc die-cast, nickel-plated
Sealing material	EPDM

Standards and Regulations

Flammability rating according to UL 94	V0
--	----

Classifications

eCl@ss

eCl@ss 4.0	27060306
eCl@ss 4.1	27060306
eCl@ss 5.0	27061801
eCl@ss 5.1	27061801
eCl@ss 6.0	27061801
eCl@ss 7.0	27061801
eCl@ss 8.0	27440103

ETIM

ETIM 4.0	EC002061
ETIM 5.0	EC002061

UNSPSC

UNSPSC 6.01	31251501
UNSPSC 7.0901	31251501
UNSPSC 11	31251501
UNSPSC 12.01	31251501
UNSPSC 13.2	39121413

Flush-type socket - VS-08-DSIV-L180-HYB SCO - 1456666

Approvals

Approvals

Approvals

UL Recognized / cUL Recognized / EAC / cULus Recognized

Ex Approvals

Approvals submitted

Approval details

UL Recognized	
Nominal current IN	0.175 A
Nominal voltage UN	56.5 V

cUL Recognized	
Nominal current IN	0.175 A
Nominal voltage UN	56.5 V

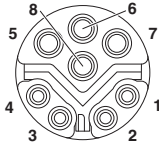
EAC

cULus Recognized

Drawings

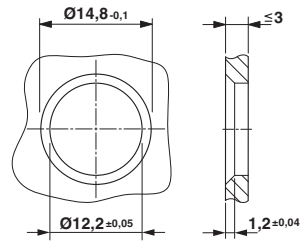
Flush-type socket - VS-08-DSIV-L180-HYB SCO - 1456666

Schematic diagram



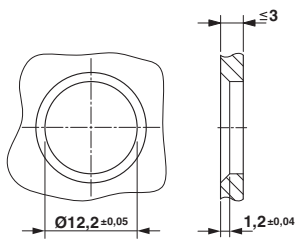
Pin assignment M12 socket, 8-pos.

Dimensional drawing



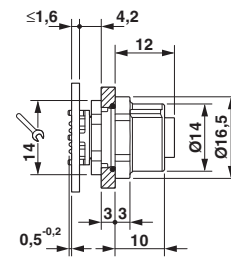
Housing cut-out for two-part M12 flush-type connectors with THR and wave soldering connection, version 1

Dimensional drawing



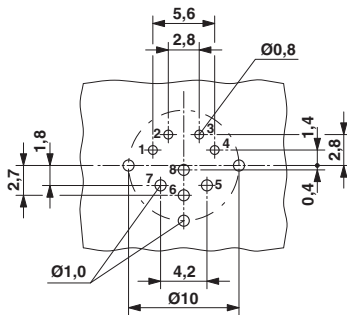
Housing cut-out for two-part M12 flush-type connectors with THR and wave soldering connection, version 2

Dimensional drawing

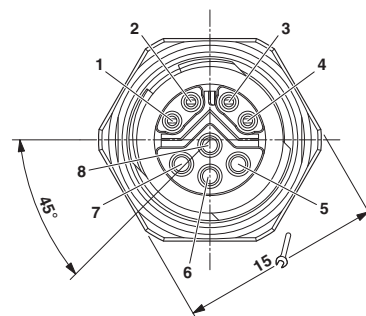


M12 flush-type connector

Drilling diagram



Dimensional drawing



M12 front view

Phoenix Contact 2016 © - all rights reserved
<http://www.phoenixcontact.com>

PHOENIX CONTACT GmbH & Co. KG
Flachmarktstr. 8
32825 Blomberg
Germany
Tel. +49 5235 300
Fax +49 5235 3 41200
<http://www.phoenixcontact.com>