

# VLT110 Series

## 110W single and quad output AC/DC Power Supplies

EOS brand VLT110 family of power supplies utilize our patented resonant technology in a slim line 5.0"x3.04"x1.07" package and over 82% efficiency. Single and quad outputs in all popular DC output configurations are available ranging from 3.3v to 48v.

Packing over 8 watts per cubic inch and efficiencies >82% the VLT110 family is ideal for data networking, industrial and multi-media applications. VLT110 has universal 90v to 264v input and meets EN55022-B, FCC Part 15 Level B Noise and Class 2 safety approvals. The VLT110 family is RoHs compliant and our factory is ISO 14001 environmentally approved. Worldwide safety standards apply and the power supply is fitted with OVP and OCP standard features.



### Features :

- > 110 W fan cooled rating.
- > Small 5.0x3.04x1.07 inch form factor.
- > High efficiency > 82%.
- > Low conducted and radiated noise.
- > EN61000-3-2 class A harmonics.
- > Cover Kit accessory available.

Model Number	Output	Nom Vout	Set Point	Output Current	Current 150LFM	Min. Load
VLT110-1300 <sup>2</sup>	V1	5V	5.1V	12A	18A	0.1A
VLT110-1301 <sup>2</sup>	V1	12V	12V	6.8A	9.2A	0.4A
VLT110-1302 <sup>2</sup>	V1	15V	15V	5.5A	7.3A	0.4A
VLT110-1303 <sup>2</sup>	V1	24V	24V	3.33A	4.6A	0.1A
VLT110-1304 <sup>2</sup>	V1	48V	48V	1.7A	2.3A	0.2A
VLT110-4300	V1	5V	5.1V	10.0A	15.0A	1.0A
	V2	12V	12.4V	3.0A	4.1A	0.1A
	V3	-5V	-5.1V	0.8A	1.1A	0.0A
	V4	-12V	-12.5V	0.8A	1.1A	0.0A
VLT110-4301	V1	5V	5.1V	10.0A	15.0A	1.0A
	V2	24V	23.5V	2.0A	2.75A	0.1A
	V3	12V	12.5V	0.8A	1.1A	0.0A
	V4	-12V	-12.5V	0.8A	1.1A	1.0A
VLT110-4302	V1	5V	5.1V	10.0A	15.0A	1.0A
	V2	15V	16.0V	3.0A	4.1A	0.1A
	V3	-5V	-5.1V	0.8A	1.1A	0.0A
	V4	-15V	-16.0V	0.8A	1.1A	0.0A
VLT110-4303	V1	5V	5.1V	10.0A	15.0A	1.0A
	V2	12V	12.4V	3.0A	4.1A	0.1A
	V3	24V	24.0V	0.8A	1.1A	0.0A
	V4	-12V	-12.5V	0.8A	1.1A	0.0A
VLT110-4304	V1	3.3V	3.3V	10.0A	15.0A	1.0A
	V2	5V	5.1V	3.0A	4.1A	0.1A
	V3	12V	12.5V	0.8A	1.1A	0.0A
	V4	-12V	-12.5V	0.8A	1.1A	0.0A
VLT80CK	Metal cover kit accessory					

INPUT SPECIFICATION		
AC Input	Universal	90 to 264Vac
Efficiency		82% Typical
Input Frequency		47-63 Hz
Input Current	Full Load at low line	2.5Arms , max
Inrush Current	High Line , cold start	65A,max

OUTPUT SPECIFICATION		
Hold-Up Time	115V	15ms
Voltage Set Point Accuracy	V1 V2 V3,V4	±3% ±5% ±7%
Line Regulation	Low line to high line	±0.3%
Load Regulation Min to 50% & 50% to Max load	V1 V2 V3,V4	±1% ±5% ±7%
Transient Response to full load	Voltage Deviation Recovery Time	10%, max <1 ms
OVP	V1 only 5V 3.3V	6.2V, +0.4V 4.1V,+0.2V
Overload Protection	Primary limited	110W,+160W
Short Circuit Protection	Auto recovery <6s	Short Term
Ripple and Noise	3.3V & 5V Other Voltages	50mV 1%
Power Fail Signal <sup>2</sup>	TTL	1ms warning
Power Good Signal <sup>2</sup>	Delay after V1 high	100ms, min
Output Rise Time		<40ms

1) Maximum current per output channel. Do not exceed total output power rating.  
2) Power fail & Power good signal on quad output models only.



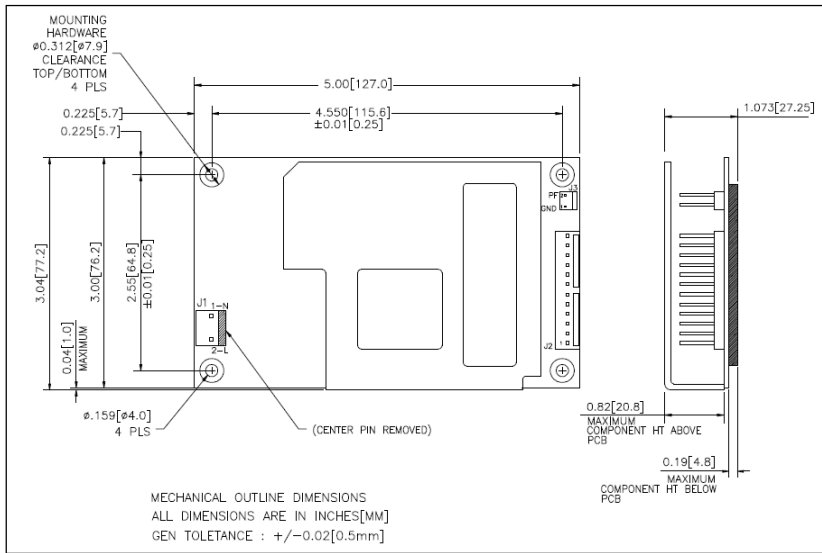
# VLT110 Series

## 110W single and quad output AC/DC Power Supplies



EMC AND SAFETY SPECIFICATIONS	
CE Mark	Complies with the LVD
EMC	EN5022-B, CISPR22-B, FCC Part 15 Class B, EN50082-1
Agency Approval	VDE , UL, c-UL, NEMKO
Safety Standard	IEC60950, EN60950, UL60950, CSA ,C22.2 No. 950 Class 1 SELV
Safety File Number	VDE: 18934-3336 UL: E150565

ENVIRONMENTAL SPECIFICATION		
Operating Temperature	No derating Linear derate to 50%	0 to 50° C 51 to 70° C
Storage Temperature		-40 to 70° C
Cooling	Convection	80W/100W
Relative humidity	Non condensing	95%, max
MTBF	MIL - HDBK-217F	> 200,000 hrs



OUTPUT CONNECTOR J2		
	Single Output	Quad Output
Pin 1,2,3,4	V1	V1
Pin 5,6,7,8	DC Return	DC Return
Pin 9,10	NC	V2
Pin 11	NC	V3
Pin 12	NC	V4

INPUT CONNECTOR J1	
Pin 1	AC Neutral
Pin 2	AC Line

INPUT CONNECTOR J3	
Pin 1	Common
Pin 2	Power Fail/Good

MECHANICAL SPECIFICATION	
AC Input Connector J1	Molex 3 position, 0.156 center Header 26-60-4030 or equivalent
Ground Connector	Spade connector. 0.25"
DC Output connector J2	Molex12 position, 0.156 center Header 26-60-4120 or equivalent
Output connector J3	Molex 2 position, 0.100 center Header 22-23-2021 or equivalent
Size	5.0"x3.04"x1.07"
Weight	9oz (250g)

INPUT SPADE CONNECTOR	
GND	AC Ground

All EOS power supplies have UL, CSA and Nemko safety compliance and medical versions meet UL60601-1 standards. All our products are RoHs compliant. Visit us at [www.eospower.com](http://www.eospower.com). EOS brand power supplies and patents are owned exclusively by EOS Power. All Rights Reserved.

