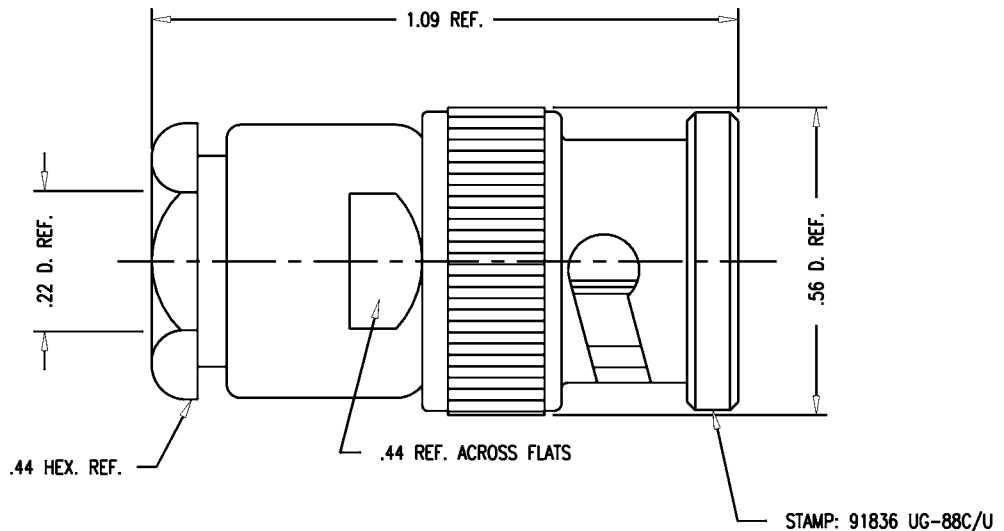


GSD

UG-88C/U



- NOTES:
- FOR USE WITH RG-55, 58 & 223/U CABLE.
 - FOR CABLING INSTRUCTIONS SEE CP-1004.
 - INTERFACE PER MIL-STD-348, FIG. 301-1.
 - MATERIALS:
 INSULATOR: TEFLON, ASTM-D-1457
 GASKETS: SILICONE RUBBER, ZZ-R-765
 SPRING WASHER: BER. COPPER, ASTM-B-196
 ALL OTHER METAL PARTS: BRASS, ASTM-B16
 - FINISHES:
 ALL METAL PARTS: SILVER PLATE, PER QQ-S-365
 - ELECTRICAL CHARACTERISTICS:
 NOMINAL IMPEDANCE: 50 OHMS
 WORKING VOLTAGE: 500 VRMS
 FREQUENCY RANGE: DC TO 4 GHz

REVISIONS

ISSUE	CHANGES
8	CN 34089 D REDRAWN JCA 09/21/92
9	CN 34233 C KH 11/02/92

JCA3161

SCALE 4:1	
APPROX SURFACE AREA	
KC-53-01	
USED ON	
REF: SC-D-72235 MS-35168	
PLUG, BNC	
DRAWN JCA	DATE 09/21/92
DESIGN MJB	DATE 09/22/92
APPR.	DATE

KINGS
 ELECTRONICS CO., INC.
 TUCKAHOE, NEW YORK 10707

UG-88C/U

GSD