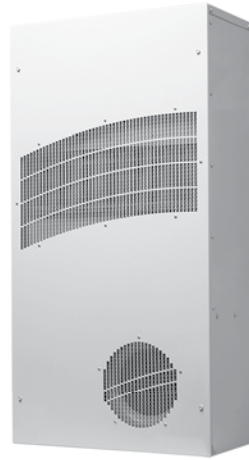


**CLIMAGUARD™ AIR-TO-AIR OUTDOOR**


**TX23**  
Models  
14 W/°F (25 W/°C)



**TX33**  
Models  
28 W/°F (50 W/°C)



**TX38**  
Models  
56 W/°F (100 W/°C)



**TX52**  
Models  
83 W/°F (150 W/°C)

**INDUSTRY STANDARDS**

UL/cUL Listed; Type 12, 4; 4X optional; File No. SA7402  
UR/cUR Recognized

UR/cUR Recognized on select models, reference performance data tables.

CE

GOST

Telcordia GR-487 capable

**APPLICATION**

- Telecom shelters
- Outdoor cabinets
- Equipment buildings
- Instrument enclosures
- And more

**FEATURES**

- Unique counterflow aluminum core for high efficiency and high performance heat transfer
- Models for 24 VDC, 48 VDC, 115 VAC and 230 VAC power supplies
- UL Listed or Recognized to save customers time and money with agency approvals
- Operating temperature range from -40 F/-40 C to 149 F/65 C
- Variable speed blowers standard on DC powered units for quiet running
- Surface or recessed mount capable
- Low-carbon mild-steel sheet-metal cover for rugged factory environments

- Easy-mount flanges for simple installation
- Mounting hardware, gaskets and user manual furnished with the unit
- Every unit functionally tested before shipping
- Filterless design for low maintenance and easy cleaning
- Engineered for temperature extremes, corrosive environments and wind driven rain

**FINISH**

- RAL 7035 light-gray, semi-textured powder-coat paint standard
- Stainless steel Type 304 or 316 finishes available on Type 4X models
- Other colors and textures available

**OPTIONS**

- Thermostat Package
  - Special Voltage Package
  - Outdoor Package
  - Harsh Environment Package\*
  - Stainless Steel Package\*
  - Heater Package\*
- \* Consult the factory for availability and catalog number.

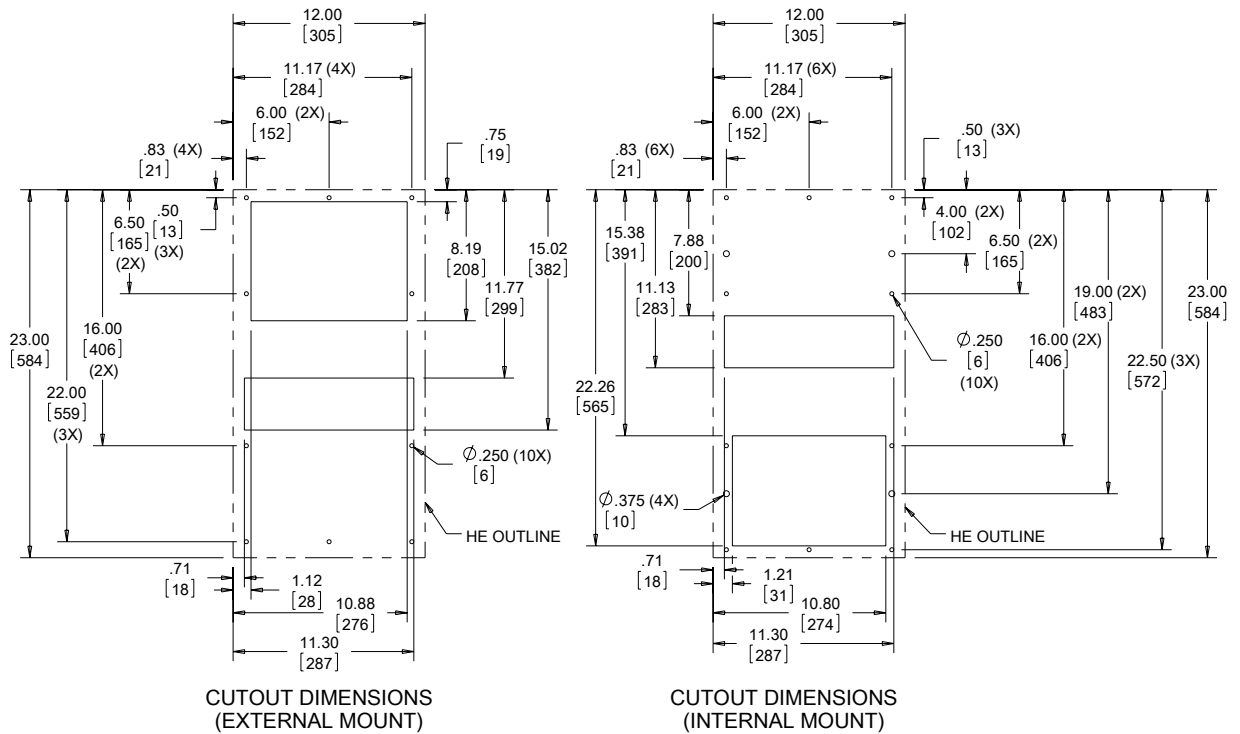
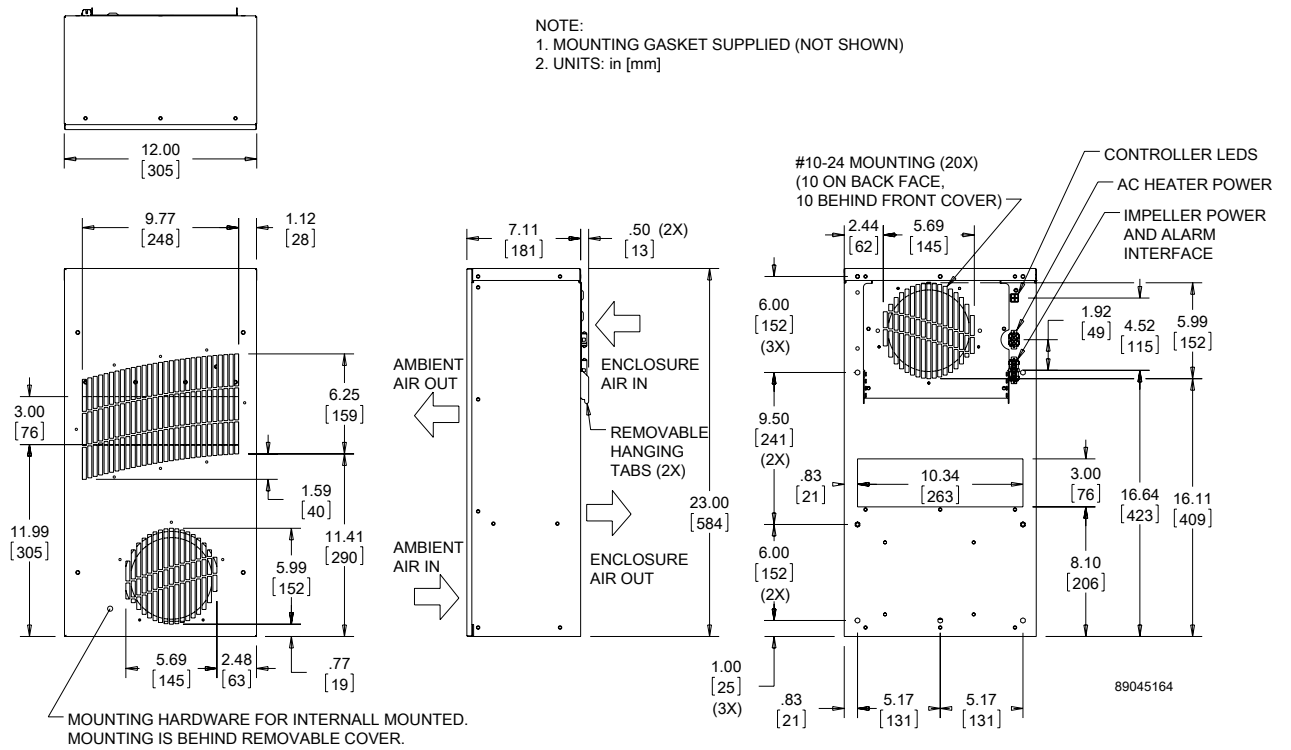
**NOTES**

Visit [www.PentairProtect.com](http://www.PentairProtect.com) to download 2D and 3D CAD drawings into the overall design of your electronic system.

Performance Data **TX23 Models 14 W/°F (25 W/°C)**

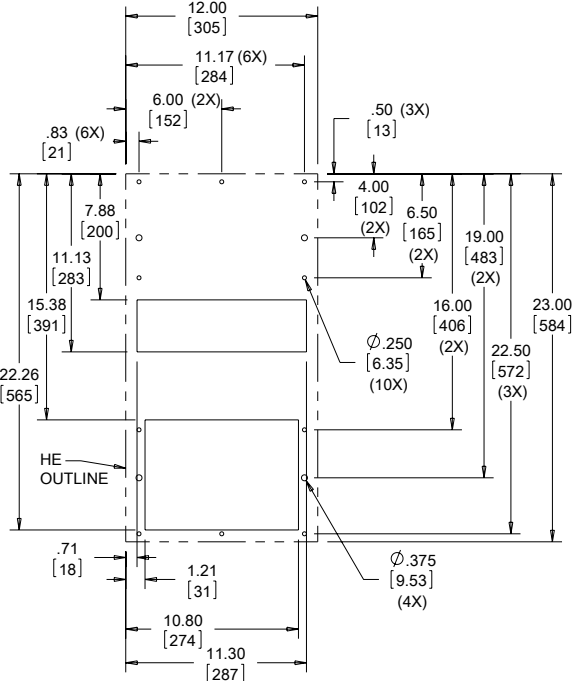
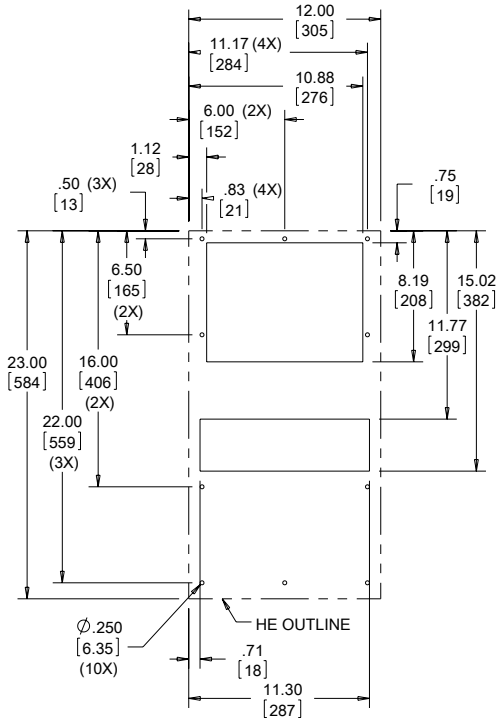
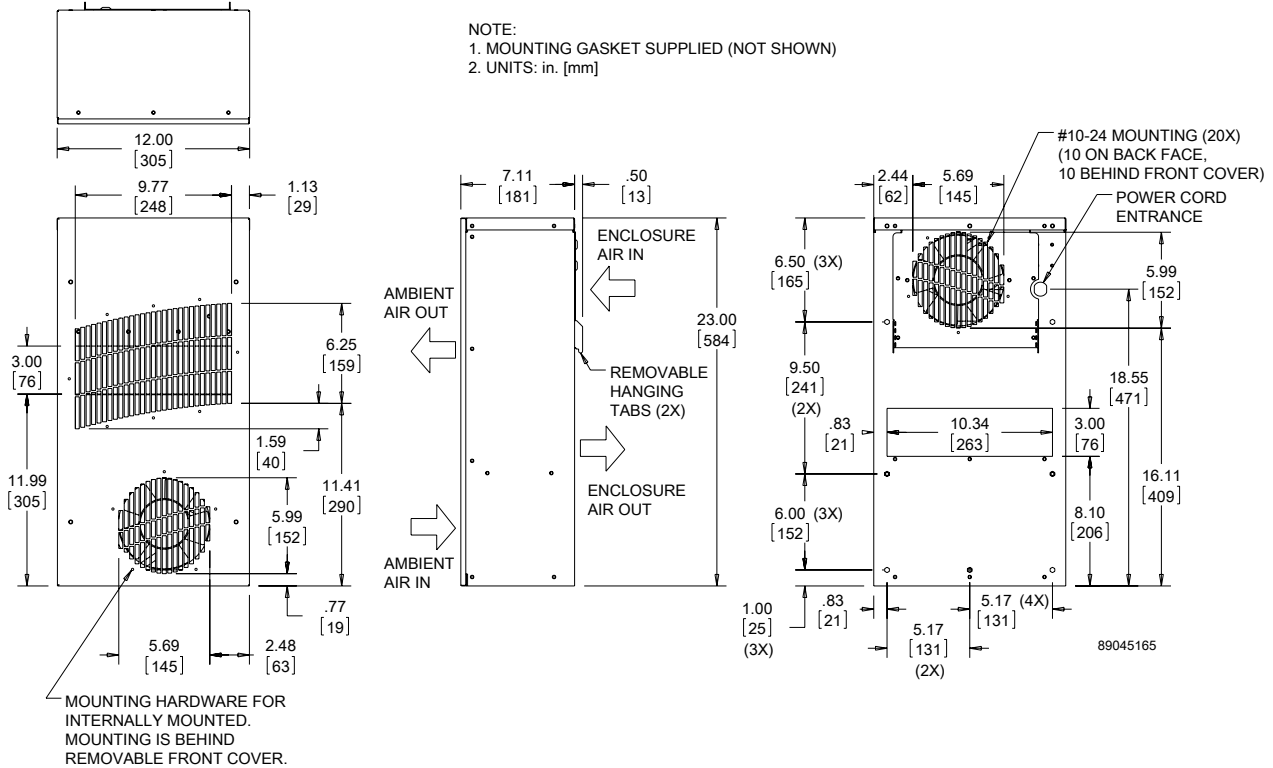
CATALOG NUMBER	TX231416100	TX231426100	TX231424100	TX231448100
<b>COOLING PERFORMANCE</b>				
Nominal:				
W per °F	14	14	14	14
W per °C	25	25	25	25
Refrigerant	N/A	N/A	N/A	N/A
Refrigerant Charge (ounces/grams)	N/A	N/A	N/A	N/A
Operating Temperature Range				
Maximum (°F/°C)	149/65	149/65	149/65	149/65
Minimum (°F/°C)	-40/-40	-40/-40	-40/-40	-40/-40
Airflow at 0 Static Pressure:				
Internal loop 50 Hz (CFM / m <sup>3</sup> /hr.)	69/117	69/117	N/A	N/A
External loop 50 Hz (CFM / m <sup>3</sup> /hr.)	58/98	58/98	N/A	N/A
Internal loop 60 Hz (CFM / m <sup>3</sup> /hr.)	84/142	84/142	175/268	175/268
External loop 60 Hz (CFM / m <sup>3</sup> /hr.)	69/117	69/117	158/297	158/297
<b>ELECTRICAL DATA</b>				
Rated Voltage	115 VAC	230 VAC	24 VDC	48 VDC
Frequency (Hz)	50/60	50/60	50/60	50/60
Operating Range	+/- 10%	+/- 10%	+/- 10%	+/- 10%
Max. Power Consumption (W at 50/60 Hz)	69	23	82	87
Max. Nominal Current (A at 50/60 Hz)	0.6	0.1	3.4	1.8
Agency Approvals	cUL Listed CE GOST		cUL Listed CE GOST	
Power Input Description	6-ft. cord with NEMA 5-15 plug	6-ft. cord with NEMA 6-15 plug	Terminal block	Terminal block
<b>ENCLOSURE PROTECTION</b>				
UL Type	Type 12, 3R, 4 standard Type 4X optional		Type 12, 3R, 4 standard Type 4X optional	
<b>SOUND LEVEL</b>				
At 1.5 Meters	56 dBA		56 dBA	
<b>UNIT CONSTRUCTION</b>				
Material	Mild steel sheet metal standard Stainless steel optional		Mild steel sheet metal standard Stainless steel optional	
Finish	RAL 7035 light-gray, semi-textured powder-coat paint standard		RAL 7035 light-gray, semi-textured powder-coat paint standard	
<b>UNIT DIMENSIONS</b>				
Height (in./mm)	23/584.2	23/584.2	23/584.2	23/584.2
Width (in./mm)	12/304.8	12/304.8	12/304.8	12/304.8
Depth (in./mm)	7.1/180.3	7.1/180.3	7.1/180.3	7.1/180.3
Weight (lb./kg)	30/13.6	30/13.6	30/13.6	30/13.6

## TX23 DC Models 14 W/°F (25°C)



TX23 AC Models 14W/°F (25 W /°C)

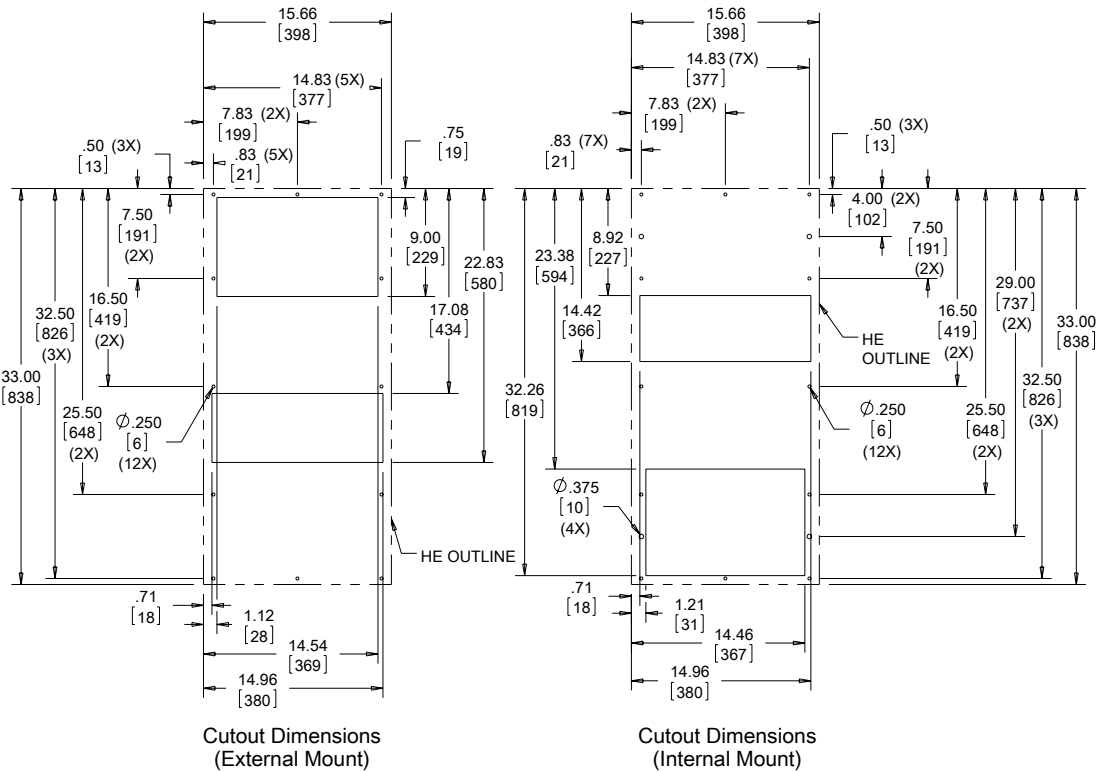
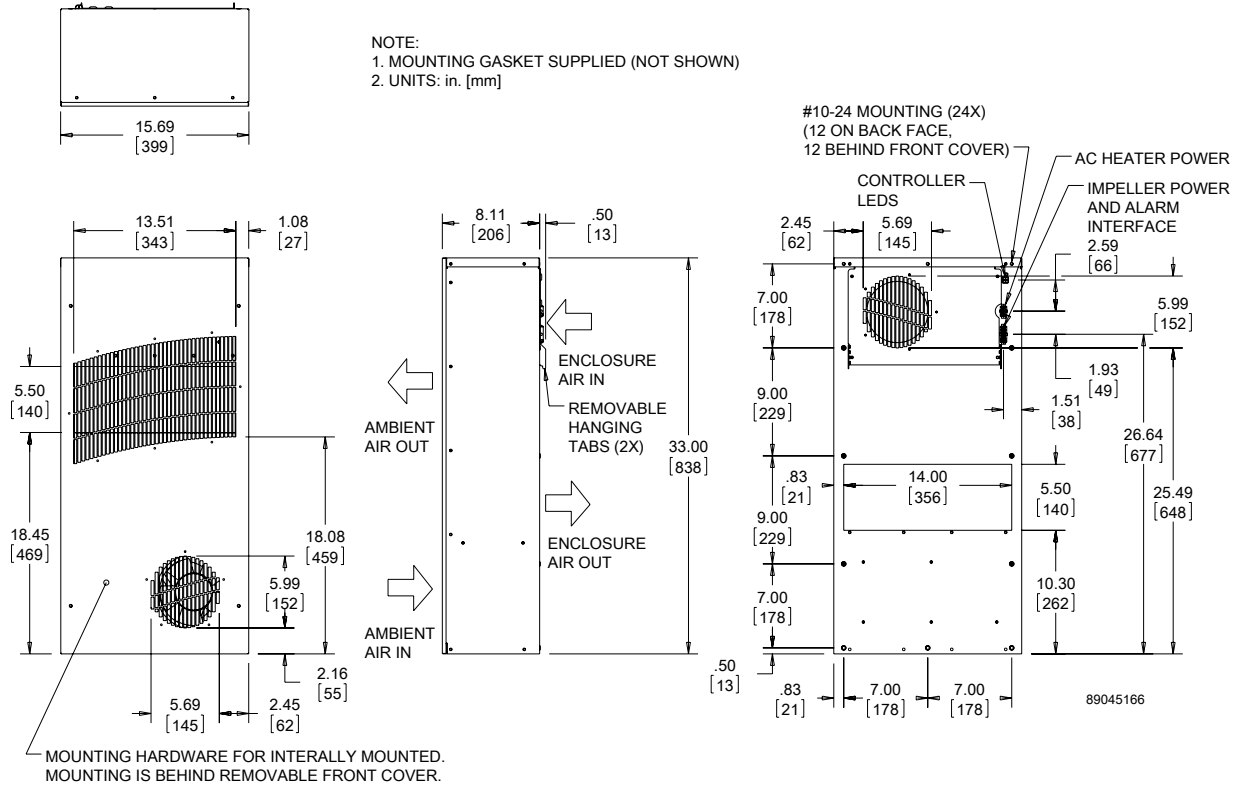
NOTE:  
 1. MOUNTING GASKET SUPPLIED (NOT SHOWN)  
 2. UNITS: in. [mm]



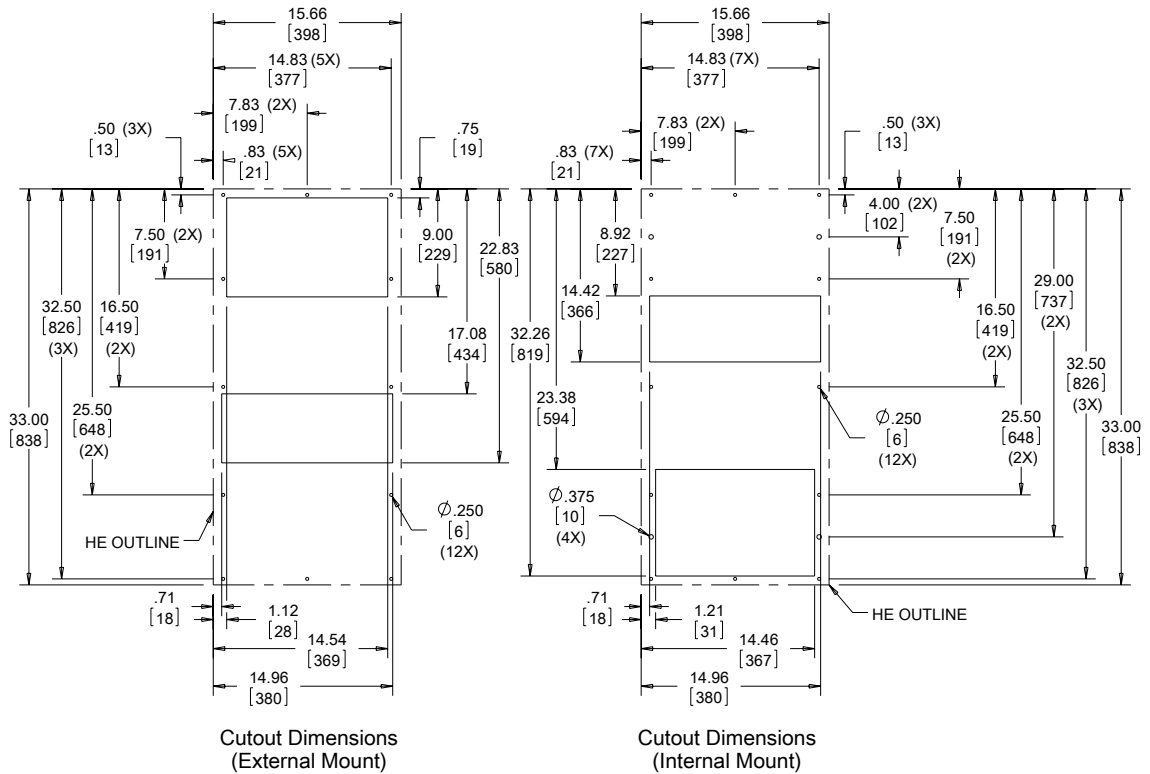
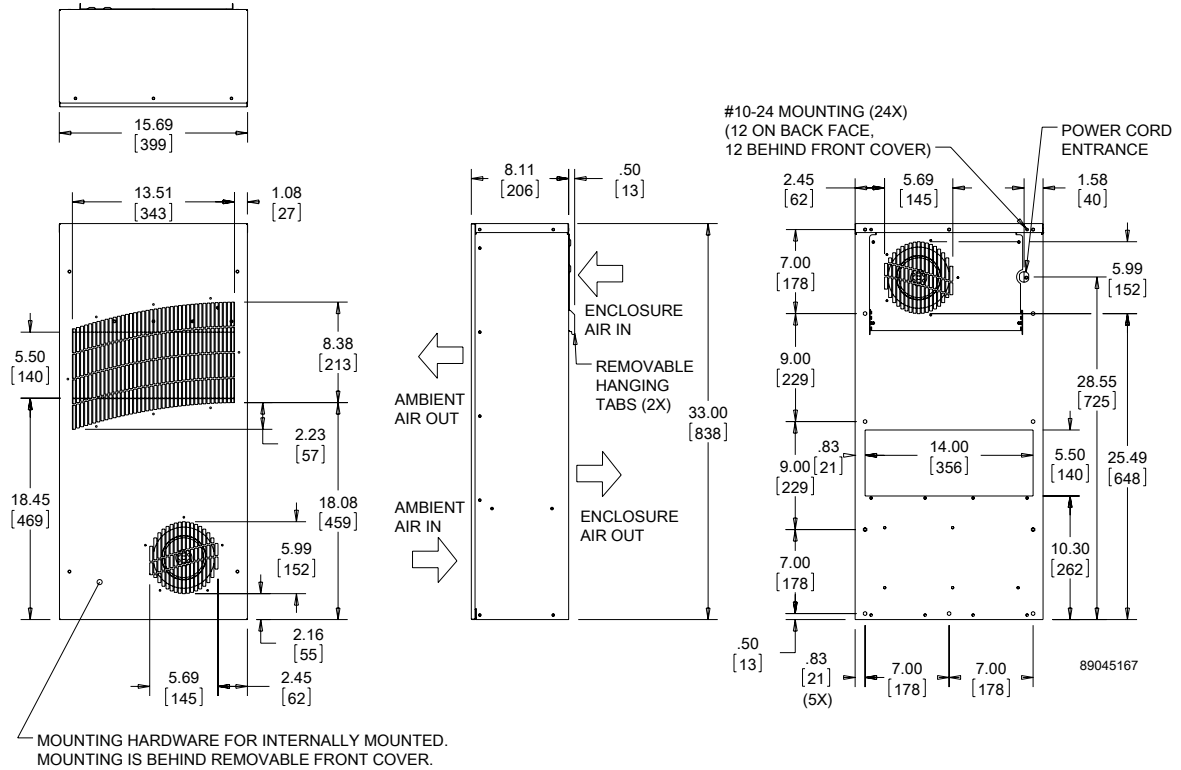
**Performance Data TX33 Models 28 W/°F (50 W/°C)**

<b>CATALOG NUMBER</b>	TX332816100	TX332826100	TX332824100	TX332848100
<b>COOLING PERFORMANCE</b>				
Nominal:				
<b>W per °F</b>	<b>28</b>	<b>28</b>	<b>28</b>	<b>28</b>
<b>W per °C</b>	<b>50</b>	<b>50</b>	<b>50</b>	<b>50</b>
Refrigerant	N/A	N/A	N/A	N/A
Refrigerant Charge (ounces/grams)	N/A	N/A	N/A	N/A
Operating Temperature Range:				
Maximum [°F/°C]	149/65	149/65	149/65	149/65
Minimum [°F/°C]	-40/-40	-40/-40	-40/-40	-40/-40
Airflow at 0 Static Pressure:				
Internal loop 50 Hz [CFM / m <sup>3</sup> /hr.]	212/360	212/360	N/A	N/A
External loop 50 Hz [CFM / m <sup>3</sup> /hr.]	238/404	238/404	N/A	N/A
Internal loop 60 Hz [CFM / m <sup>3</sup> /hr.]	228/387	228/387	228/387	228/387
External loop 60 Hz [CFM / m <sup>3</sup> /hr.]	263/447	263/447	166/282	166/282
<b>ELECTRICAL DATA</b>				
<b>Rated Voltage</b>	<b>115 VAC</b>	<b>230 VAC</b>	<b>24 VDC</b>	<b>48 VDC</b>
Frequency [Hz]	50/60	50/60	50/60	50/60
Operating Range	+/- 10%	+/- 10%	+/- 10%	+/- 10%
Max. Power Consumption (W at 50/60 Hz)	161	92	82	87
Max. Nominal Current [A at 50/60 Hz]	1.4	0.4	3.4	1.8
Agency Approvals	cUL Listed CE GOST		cUL Listed CE GOST	
Power Input Description	6-ft. cord with NEMA 5-15 plug	6-ft. cord with NEMA 6-15 plug	Terminal block	Terminal block
<b>ENCLOSURE PROTECTION</b>				
UL Type	Type 12, 3R, 4 standard Type 4X optional		Type 12, 3R, 4 standard Type 4X optional	
<b>SOUND LEVEL</b>				
At 1.5 Meters	56 dBA		56 dBA	
<b>UNIT CONSTRUCTION</b>				
Material	Mild steel sheet metal standard Stainless steel optional		Mild steel sheet metal standard Stainless steel optional	
Finish	RAL 7035 light-gray, semi-textured powder-coat paint standard		RAL 7035 light-gray, semi-textured powder-coat paint standard	
<b>UNIT DIMENSIONS</b>				
Height (in./mm)	33/838.2	33/838.2	33/838.2	33/838.2
Width (in./mm)	15.7/398.8	15.7/398.8	15.7/398.8	15.7/398.8
Depth (in./mm)	8.1/205.7	8.1/205.7	8.1/205.7	8.1/205.7
Weight (lb./kg)	45/20.4	45/20.4	45/20.4	45/20.4

TX 33 DC Models 28 W/°F (50 W/°C)



## TX33 AC Models 28 W°F (50 W/°C)

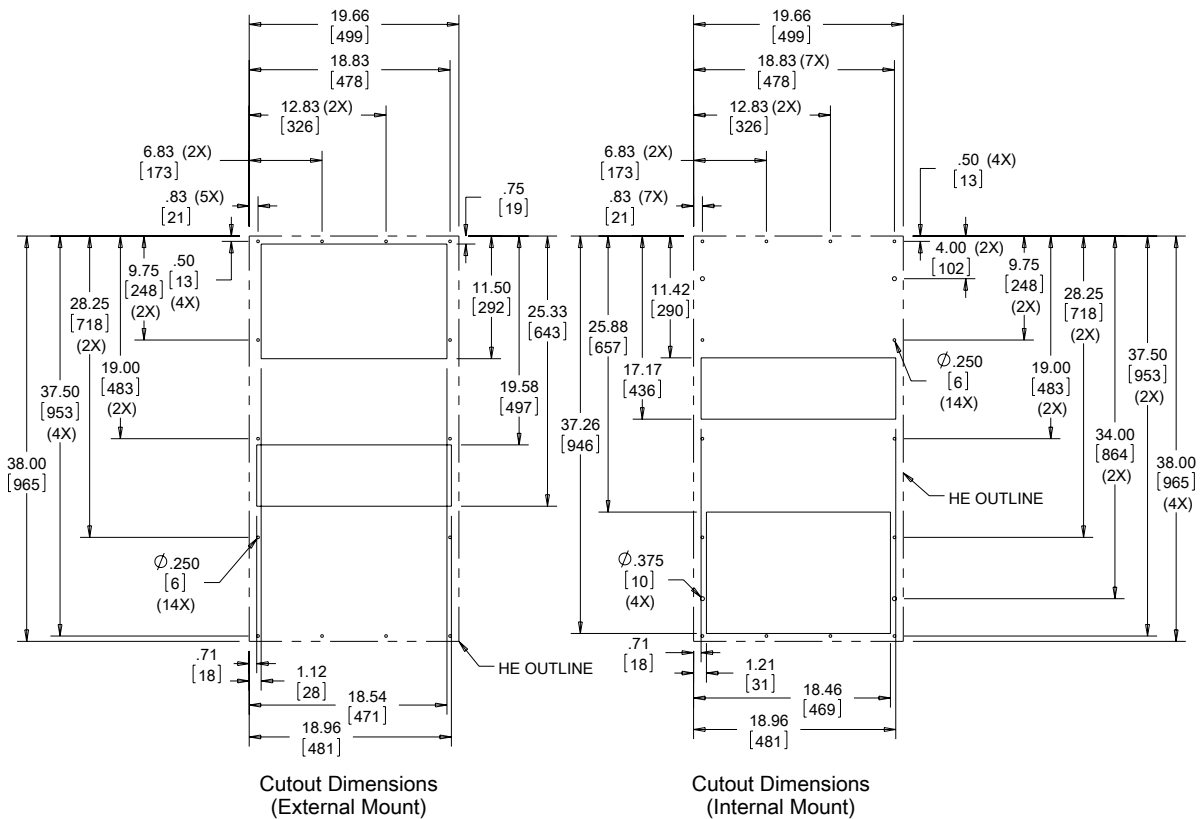
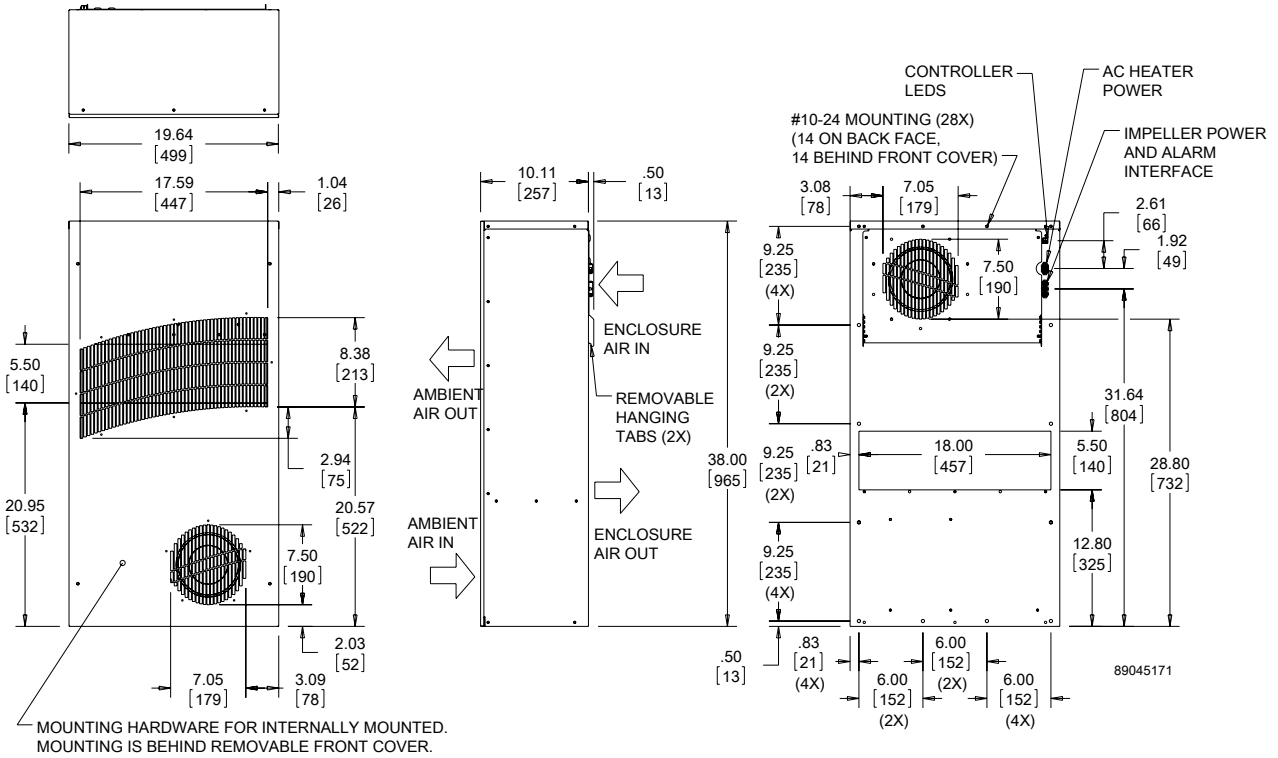


Performance Data **TX38 Models 56 W/°F (100 W/°C)**

CATALOG NUMBER	TX385616100	TX385626100	TX385624100	TX385648100
<b>COOLING PERFORMANCE</b>				
Nominal:				
W per °F	56	56	56	56
W per °C	100	100	100	100
Refrigerant	N/A	N/A	N/A	N/A
Refrigerant Charge (ounces/grams)	N/A	N/A	N/A	N/A
Operating Temperature Range:				
Maximum (°F/°C)	149/65	149/65	149/65	149/65
Minimum (°F/°C)	-40/-40	-40/-40	-40/-40	-40/-40
Airflow at 0 Static Pressure:				
Internal loop 50 Hz (CFM / m <sup>3</sup> /hr.)	425/722	425/722	N/A	N/A
External loop 50 Hz (CFM / m <sup>3</sup> /hr.)	461/738	461/738	N/A	N/A
Internal loop 60 Hz (CFM / m <sup>3</sup> /hr.)	477/810	477/810	368/625	368/625
External loop 60 Hz (CFM / m <sup>3</sup> /hr.)	517/878	517/878	422/717	422/717
<b>ELECTRICAL DATA</b>				
Rated Voltage	115 VAC	230 VAC	24 VDC	48 VDC
Frequency (Hz)	50/60	50/60	50/60	50/60
Operating Range	+/- 10%	+/- 10%	+/- 10%	+/- 10%
Max. Power Consumption (W at 50/60 Hz)	368	276	207	279
Max. Nominal Current (A at 50/60 Hz)	2.3/3.2	0.7/1.2	8.6	5.8
Agency Approvals	cUL Listed CE GOST		cUL Listed CE GOST	
Power Input Description	6-ft. cord with NEMA 5-15 plug	6-ft. cord with NEMA 6-15 plug	Terminal block	Terminal block
<b>ENCLOSURE PROTECTION</b>				
UL Type	Type 12, 3R, 4 standard Type 4X optional		Type 12, 3R, 4 standard Type 4X optional	
<b>SOUND LEVEL</b>				
At 1.5 Meters	64 dBA		64 dBA	
<b>UNIT CONSTRUCTION</b>				
Material	Mild Mild steel sheet metal standard		Mild Mild steel sheet metal standard	
Finish	RAL 7035 light-gray, semi-textured powder-coat paint standard		RAL 7035 light-gray, semi-textured powder-coat paint standard	
<b>UNIT DIMENSIONS</b>				
Height (in./mm)	38/965.2	38/965.2	38/965.2	38/965.2
Width (in./mm)	19.7/500.4	19.7/500.4	19.7/500.4	19.7/500.4
Depth (in./mm)	10.1/256.5	10.1/256.5	10.1/256.5	10.1/256.5
Weight (lb./kg)	66/30	66/30	66/30	66/30

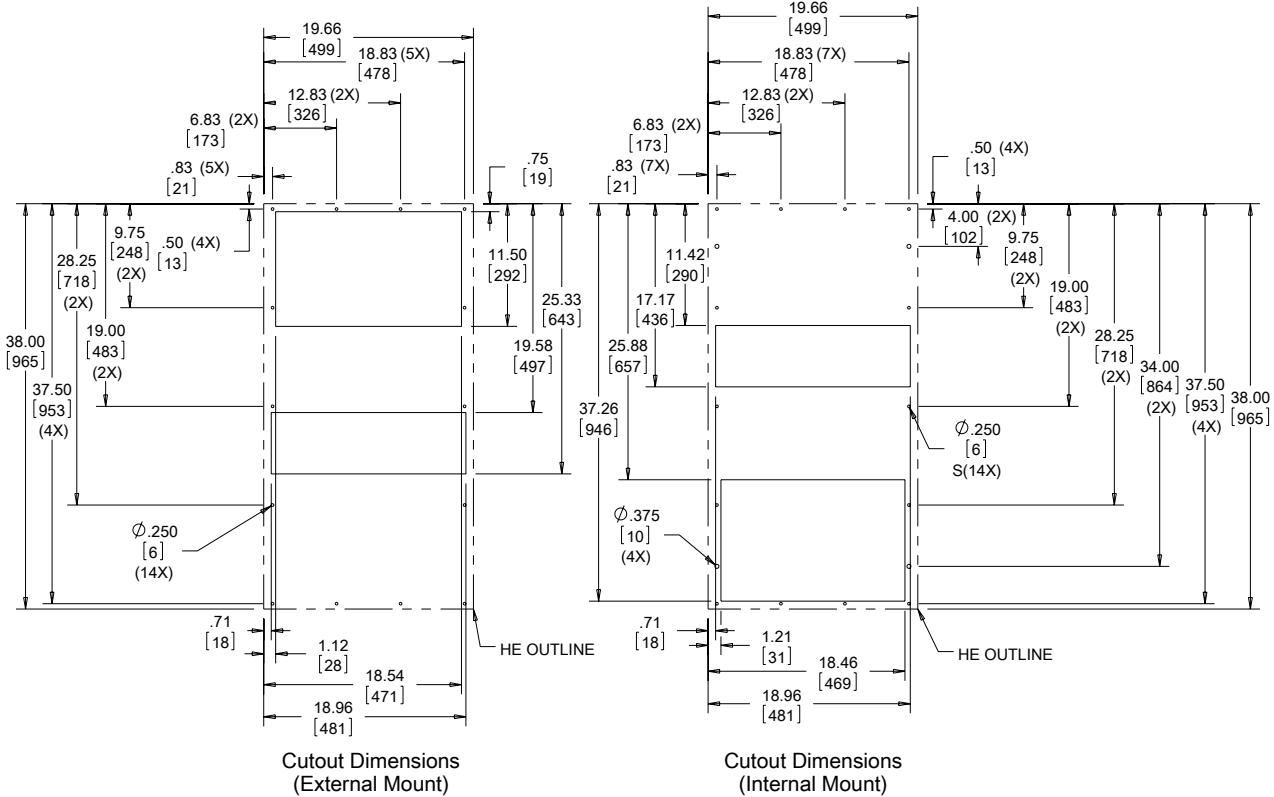
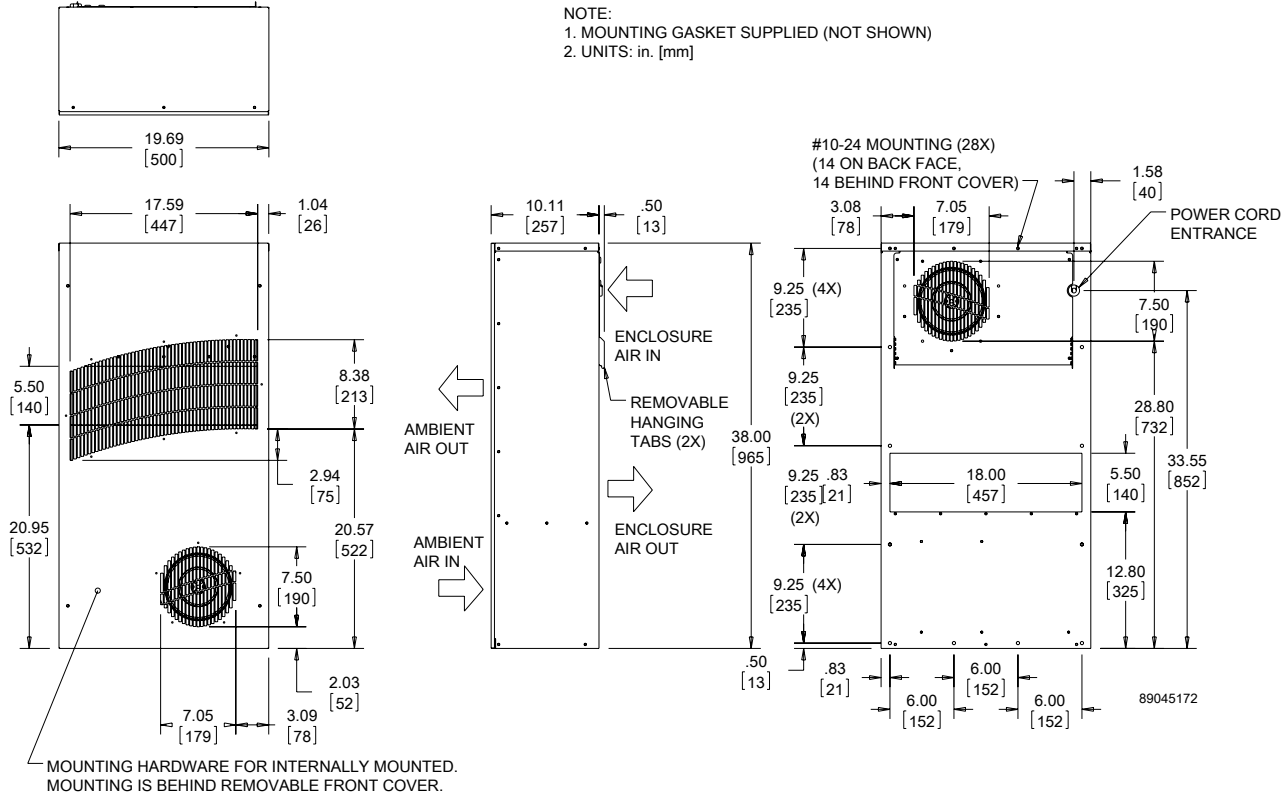


## TX38 DC Models 56 W/°F (100 W/°C)



TX38 AC Models 56 W/°F (100 W/°C)

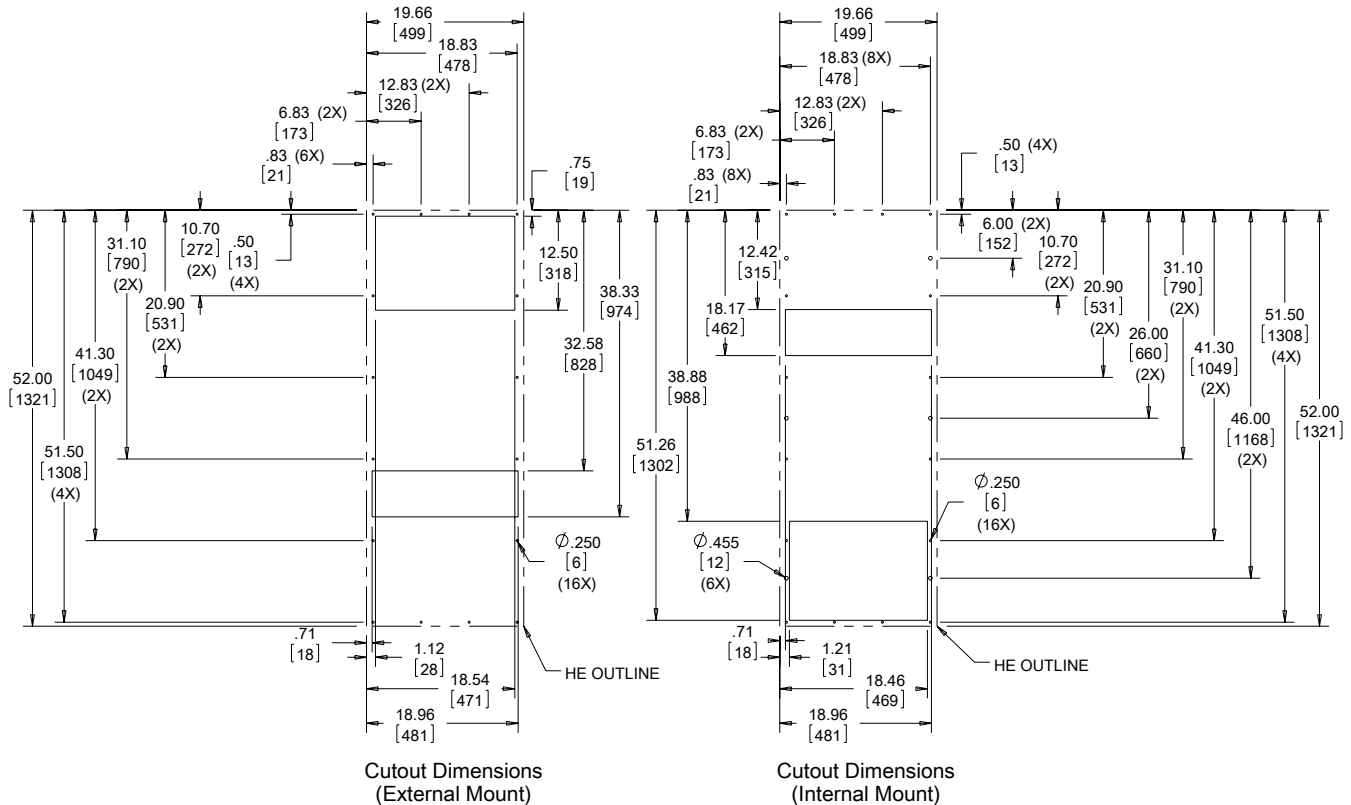
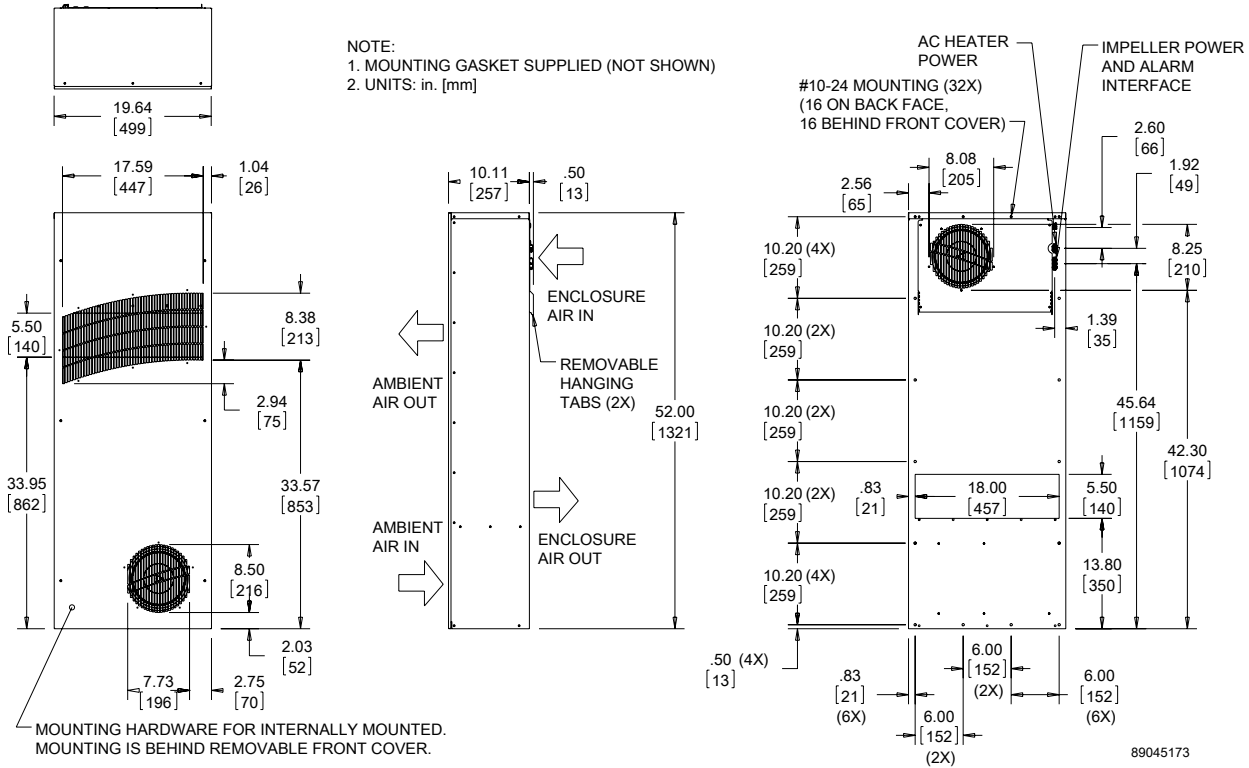
NOTE:  
 1. MOUNTING GASKET SUPPLIED (NOT SHOWN)  
 2. UNITS: in. [mm]



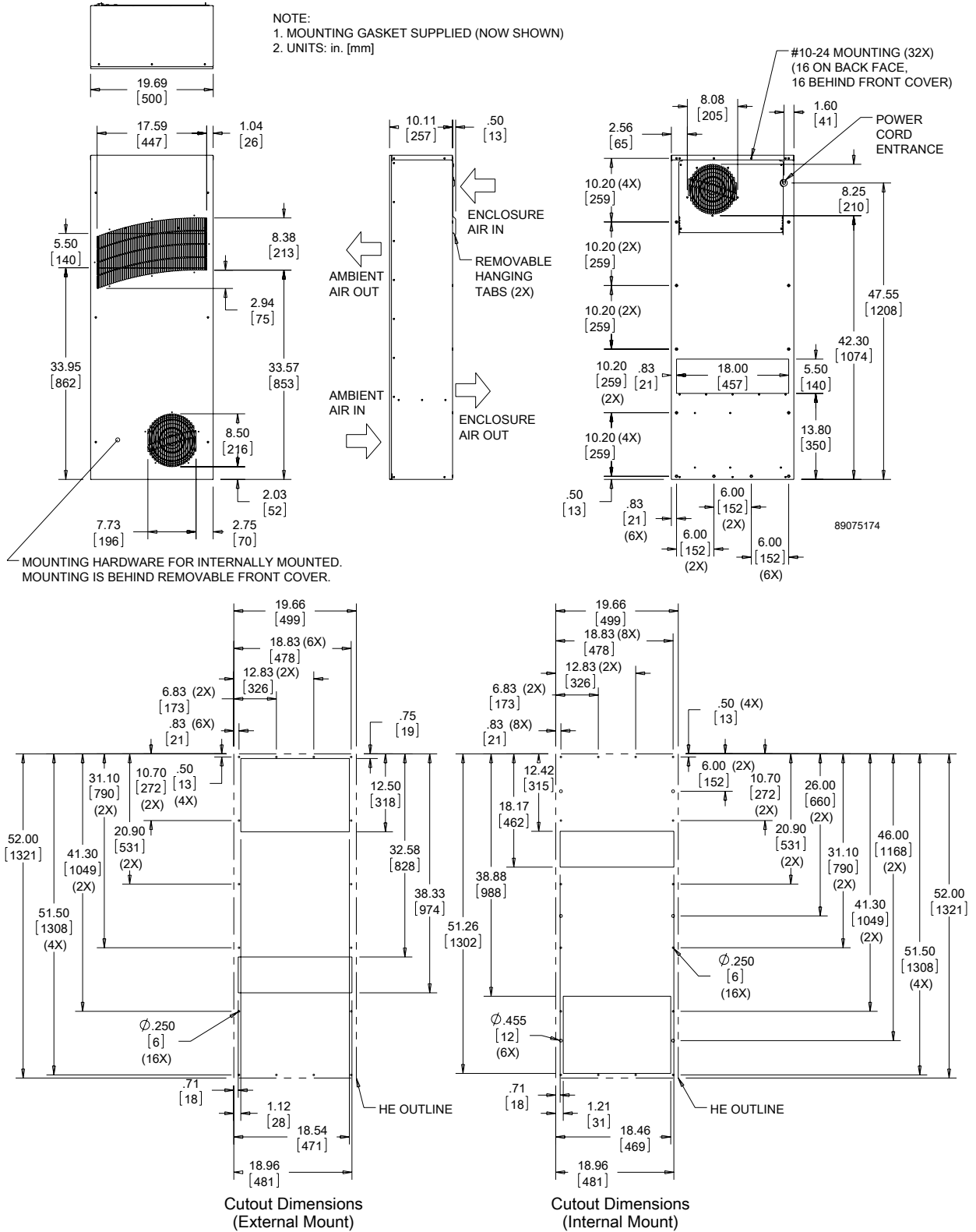
Performance Data **TX52 Models 83 W/°F (150 W/°C)**

CATALOG NUMBER	TX528316100	TX528326100	TX528324100	TX528348100
<b>COOLING PERFORMANCE</b>				
Nominal:				
W per °F	<b>83</b>	<b>83</b>	<b>83</b>	<b>83</b>
W per °C	<b>150</b>	<b>150</b>	<b>150</b>	<b>150</b>
Refrigerant	N/A	N/A	N/A	N/A
Refrigerant Charge (ounces/grams)	N/A	N/A	N/A	N/A
Operating Temperature Range:				
Maximum [°F/°C]	149/65	149/65	149/65	149/65
Minimum [°F/°C]	-40/-40	-40/-40	-40/-40	-40/-40
Airflow at 0 Static Pressure:				
Internal loop 50 Hz (CFM / m <sup>3</sup> /hr.)	495/841	495/841	N/A	N/A
External loop 50 Hz (CFM / m <sup>3</sup> /hr.)	540/917	540/917	N/A	N/A
Internal loop 60 Hz (CFM / m <sup>3</sup> /hr.)	533/905	533/905	466/792	466/792
External loop 60 Hz (CFM / m <sup>3</sup> /hr.)	605/1028	605/1028	547/929	547/929
<b>ELECTRICAL DATA</b>				
Rated Voltage	<b>115 VAC</b>	<b>230 VAC</b>	<b>24 VDC</b>	<b>48 VDC</b>
Frequency (Hz)	50/60	50/60	50/60	50/60
Operating Range	+/- 10%	+/- 10%	+/- 10%	+/- 10%
Max. Power Consumption (W at 50/60 Hz)	782	771	507	375
Max. Nominal Current (A at 50/60 Hz)	4.3/6.7	2.2/3.4	21.1	7.8
Agency Approvals	cUL Listed CE GOST		cUL Listed CE GOST	
Power Input Description	6-ft. cord with NEMA 5-15 plug	6-ft. cord with NEMA 6-15 plug	Terminal block	Terminal block
<b>ENCLOSURE PROTECTION</b>				
UL Type	Type 12, 3R, 4 standard Type 4X optional		Type 12, 3R, 4 standard Type 4X optional	
<b>SOUND LEVEL</b>				
At 1.5 Meters	68 dBA		68 dBA	
<b>UNIT CONSTRUCTION</b>				
Material	Mild steel sheet metal standard Stainless steel optional		Mild steel sheet metal standard Stainless steel optional	
Finish	RAL 7035 light-gray, semi-textured powder-coat paint standard		RAL 7035 light-gray, semi-textured powder-coat paint standard	
<b>UNIT DIMENSIONS</b>				
Height (in./mm)	52/1320.8	52/1320.8	52/1320.8	52/1320.8
Width (in./mm)	19.7/500.4	19.7/500.4	19.7/500.4	19.7/500.4
Depth (in./mm)	10.1/256.5	10.1/256.5	10.1/256.5	10.1/256.5
Weight (lb./kg)	100/45.3	100/45.3	100/45.3	100/45.3

TX52 DC Models 83 W/°F (150 W/°C)



## TX52 AC Models 83 W/°F (150 W/°C)



**Notes**