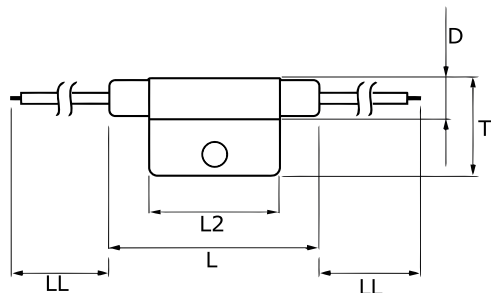


**KEMET Part Number: TRS5-80BLRVU**  
(USEH80BLR00000)

**KEMET**

a YAGEO company

KEMET, TRS, Thermal Reed Switch, Axial, 2.5C Temperature Accuracy, High Reliability, High-Speed Response, Long Operational Life, Excellent Environmental Durability, High Temperature Accuracy, 80°C, Break



#### Dimensions

D	8.2mm MAX
L	50mm MAX
L2	29mm MAX
T	20mm MAX
LL	200mm NOM

#### Packaging Specifications

<b>Packaging:</b>	Rubberband Box
<b>Packaging Quantity:</b>	600
<b>Component Weight:</b>	8.5 g

#### General Information

<b>Series:</b>	TRS
<b>Type:</b>	Thermal Reed Switch
<b>Style:</b>	Axial
<b>Description:</b>	Thermal Reed Switch
<b>Features:</b>	High Reliability, High-Speed Response, Long Operational Life, Excellent Environmental Durability, High Temperature Accuracy
<b>Lead:</b>	Cables
<b>RoHS:</b>	Yes
<b>Qualifications:</b>	UL, CSA, VDE

#### Specifications

<b>Switching Temperature:</b>	80C +/-2.5C
<b>Temperature Range:</b>	-20/+130°C
<b>Contact Type:</b>	Break
<b>Voltage AC:</b>	264 VAC MAX (Opening/Closing)
<b>Current:</b>	0.275 Amps MAX (Make/Break), 1 mAmps MIN (5VDC, Opening/ Closing)
<b>Resistance:</b>	150 mOhms MAX (Contact Resistance)
<b>Max Opening/Closing Power:</b>	60.5 W (AC/DC)
<b>Max Opening/Closing Voltage:</b>	264 V (AC)

Statements of suitability for certain applications are based on our knowledge of typical operating conditions for such applications, but are not intended to constitute - and we specifically disclaim - any warranty concerning suitability for a specific customer application or use. This Information is intended for use only by customers who have the requisite experience and capability to determine the correct products for their application. Any technical advice inferred from this Information or otherwise provided by us with reference to the use of our products is given gratis, and we assume no obligation or liability for the advice given or results obtained.

**KEMET**

a YAGEO company