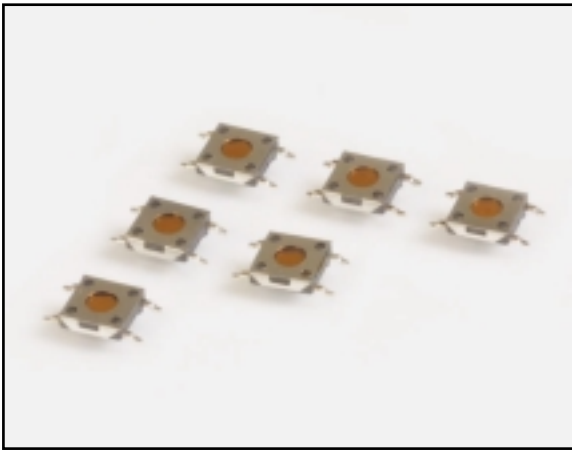


SURFACE MOUNT TACT SWITCHES



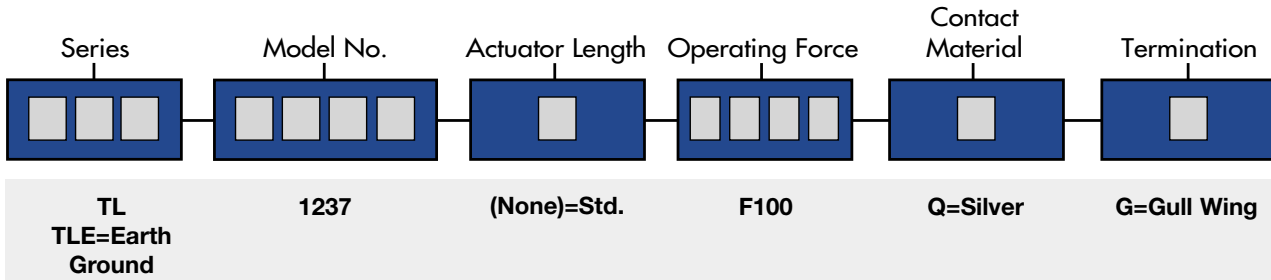
SPECIFICATIONS

Rating:	50mA @ 50 VDC
Mechanical Life:	100,000 cycles typical
Contact Resistance:	20mΩ max. initial @ 2-4 VDC, 100mA
Insulation Resistance:	100MΩ min.
Dielectric Strength:	1,000 Vrms at sea level
Operating Force:	100 ± 50 gf, 160 ± 50 gf

MATERIALS

Housing:	Polyphenylene Sulfide (PPS)
Actuator:	Polymide
Cover:	Stainless Steel
Contacts:	Silver-clad phosphor bronze
Terminals:	Silver-clad brass

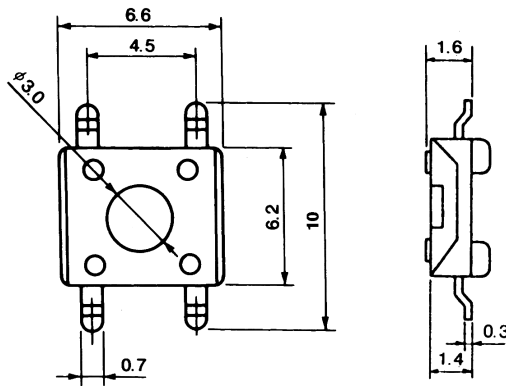
HOW TO ORDER



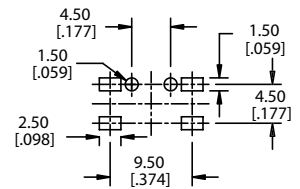
EXAMPLE



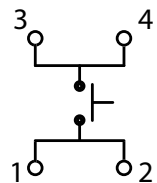
TL 1237



P.C. MOUNTING



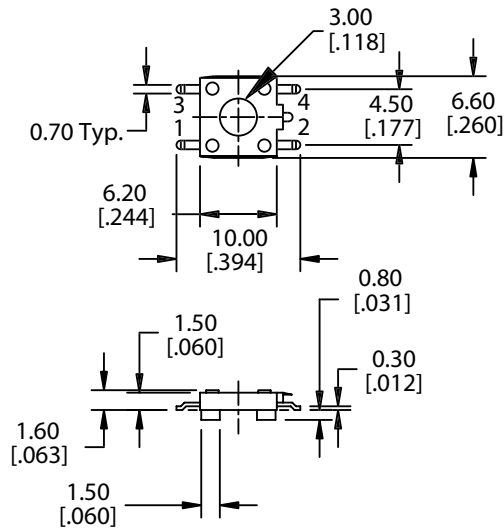
Schematic



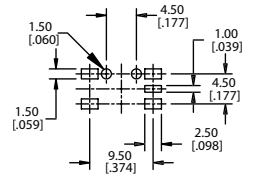
SPECIFICATIONS SUBJECT TO CHANGE WITHOUT NOTICE.



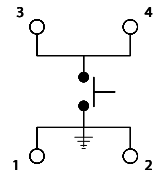
TLE 1237
Earth Ground



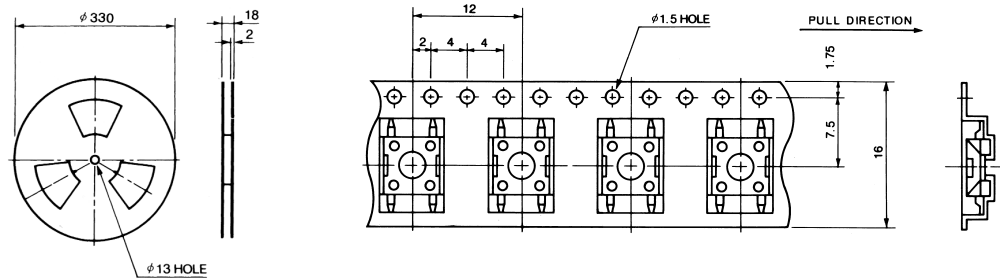
P.C. MOUNTING



Schematic



TL 1237 STANDARD REEL



SPECIFICATIONS SUBJECT TO CHANGE WITHOUT NOTICE.