

Description

Body molded of glass filled flame retardant polyester (PBT). Meets UL94VO and is fungus resistant. Can be wave soldered and cleaned with commercial solvents without degradation.

Wider contact mating surface. Provides for higher reliability of relay terminal mating.

One piece contact/terminal construction of beryllium copper.

More conductive, greater strength higher spring rate.

Selectively plated gold over nickel on contact area, 60/40 Brite-Tin on terminal area

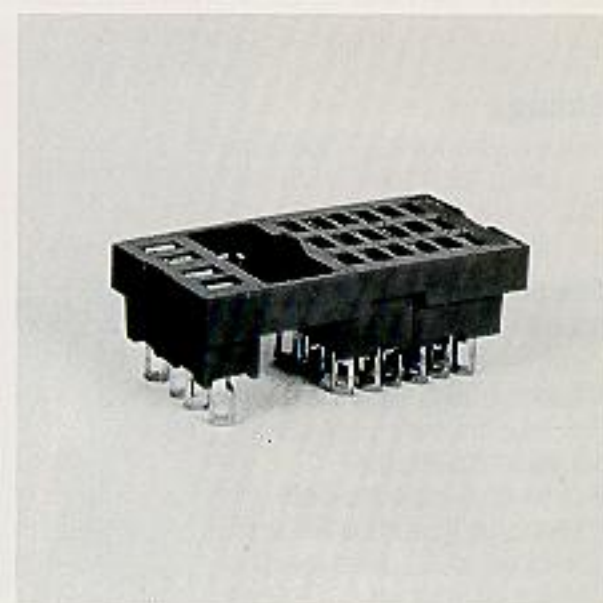
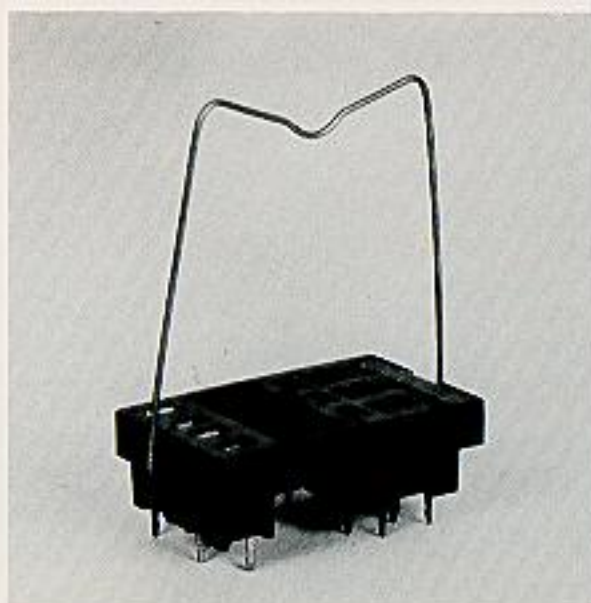
Low insertion and high withdrawal forces of relay to socket.

Assures maximum retention

Captive ground spring

Once inserted, not easily dislodged.

Provision for either end or side retainer/bale



Approvals

UL E-20604
CSA LR34171

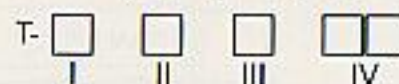
Accessories

| Part Name | Part No. | Diagram | Retainer-Part No. | Diagram |
|--|----------|---------|------------------------------------|---------|
| Ground Spring for Solder Lug/Chassis | T-00101 | | T-00102 2-pole | |
| | | | T-00104 4-pole | |
| | | | T-00106 6-pole | |
| Ground Spring for all P.C. mounted sockets | T-00105 | | T-00108 8-pole Flat Retainer | |

All dimensions in inches unless otherwise noted. General tolerance ± 0.015

Ordering Information

T-Series relay sockets accommodate Cradle® relay models: T154/T163, T351/T362, and TD10 timers, as well as equivalent competitive models. Order sockets with the mounting configuration required by your application and the number of poles required by the relay, using the guidelines below.



- I Number of Poles
2 = 2-pole socket
4 = 4-pole socket
6 = 6-pole socket
8 = 8-pole socket

- II Type of Terminal
1 = Solder lug/chassis mounted
3 = Standard PC in-line mounting
5 = PC mounting, .100" x .100" grid throughout
7 = PC mounting, .100" x .100" grid in contact terminal area
.100" x .150" grid in coil terminal area

- III Contact Finish*
1 = 10 to 12 microinch gold over nickel contact area

- IV Socket Assemblies*
10 = Socket only
11 = Socket with ground spring installed
12 = Socket with ground spring installed and retainer
13 = Socket with retainer

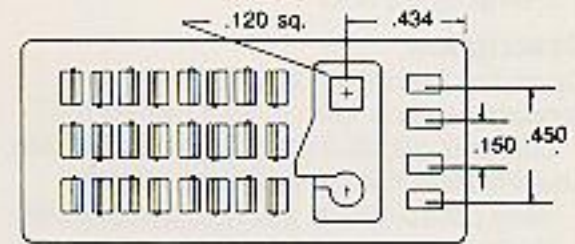
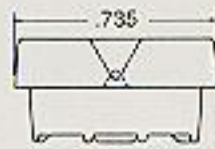
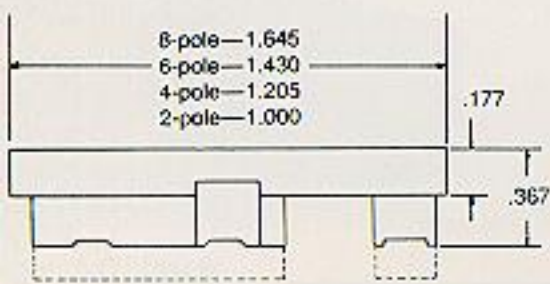
Examples:

T-21110: 2-pole, solder/lug chassis mount, standard gold contact plating, socket only.

T-43112: 4-pole, PC in-line mounting, standard gold contact plating, with ground spring and standard retainer.

*Consult factory for additional variations

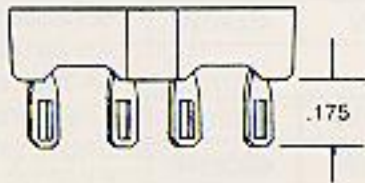
Socket Outline



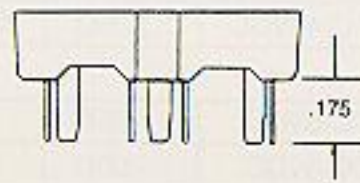
For all models except .100 x .100 grid coil terminal spacing

Chassis Mount (Solder Lug)

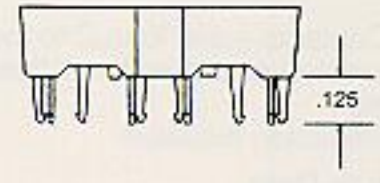
Terminal Detail



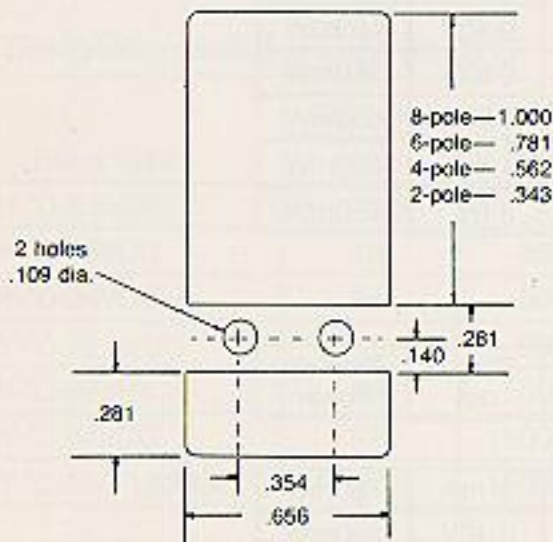
PC Mount (In-Line Spacing)



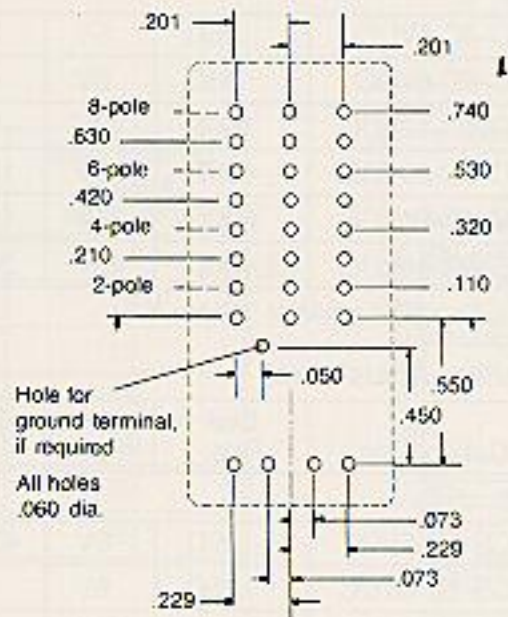
PC Mount (Staggered Spacing)



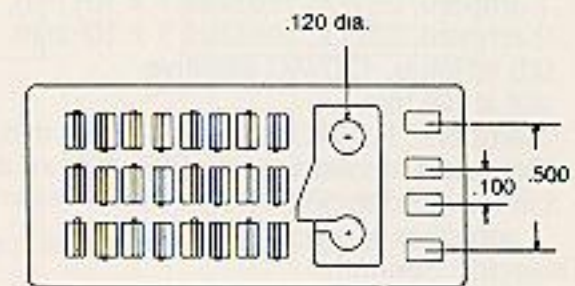
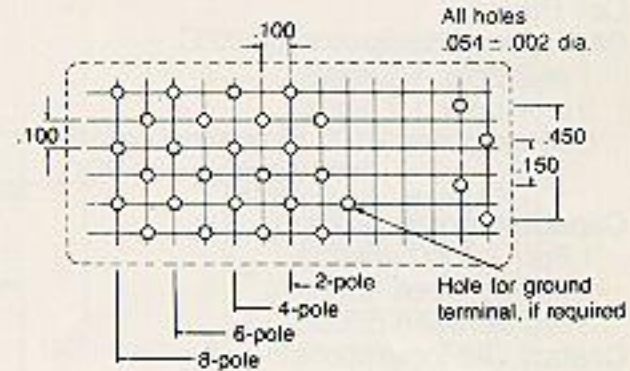
Recommended Panel Cutout



Recommended Board Layout (component side of board)



Recommended Board Layout (component side of board) For socket T- 7



Recommended Board Layout (component side of board) For socket T- 5

