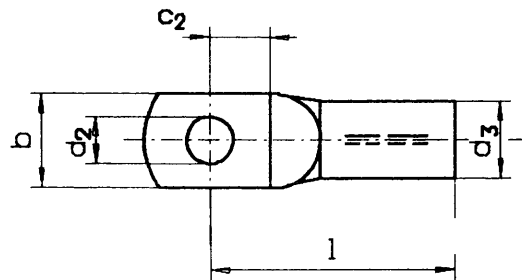
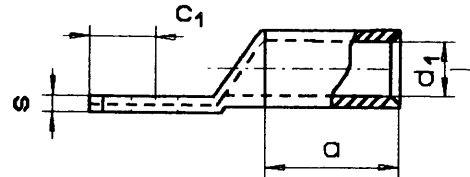
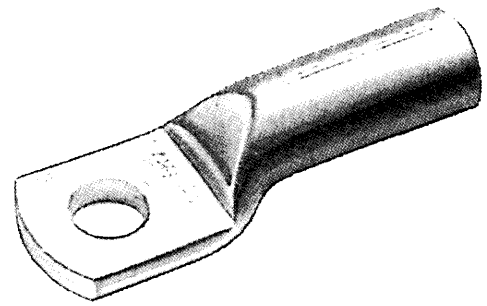


STA-KON®

Copper Tube Terminals



Uninsulated Copper Tube Terminals

Part No.	Wire Size mm ²	Stud Size	WKZ	l	c ₁	Dimensions mm				Weight kg/100	Pack Size		
						b	s	d ₁	d ₂				
T 2.5-4*	2.5	M 4		13	4	7.5	1.2	2.3	4.3	0.13			
T 4-6*	4	M 6		19	6.5	10	1.2	3	6.5	0.24	100		
T 6-5	6	M 5	5	24	6.5	8.5	1.5	3.8	5.3	0.31	100		
T 6-6		M 6			7.5	8.5	1.5		6.4	0.30			
T 10-6		M 6			7.5	9	1.5		6.4	0.36			
T 10-8		M 8			6	27	10		13	1.3		4.5	8.4
T 10-10	10	M 10			12	17	1.5		10.5	0.37			
T 16-6		M 6			7.5	13			6.4	1.18			
T 16-8		M 8	8	36	10	13	2.5	5.5	8.4	1.18	100		
T 16-10		M 10			12	17		10.5	1.20				
T 25-6	25	M 6			7.5	14			6.4	1.49			
T 25-8		M 8	10	38	10	16	3	7	8.4	1.57	100		
T 25-10		M 10			12	17				10.5		1.58	
T 25-12		M 12			13	19				13		1.54	
T 35-8	M 8	12			42	10			17	3.5		8.2	8.4
T 35-10	M 10		12	19			10.5	2.85					
T 50-8	50	M 8	14	52	10	20	4	10	8.4	4.50	100		
T 50-10		M 10			12	22				10.5		4.50	
T 70-10	70	M 10	16	55	12	24	4.5	11.5	10.5	6.15	50		
T 95-10	95	M 10	18	65	12	28	5	13.5	10.5	9.15	50		
T 120-10	120	M 10	20	70	15	32	5.5	15.5	10.5	11.40	50		
T 150-10		M 10			15				10.5	16.40			

*According to DIN 40500 Ringform with inspection hole
For Tooling see page 182-194

