

# SLA SERIES

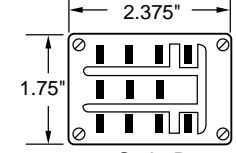
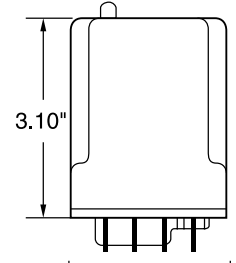
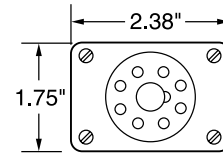
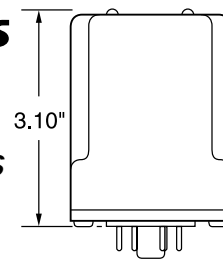


## Phase Loss, Under Voltage and Phase Sequence Monitor/Relays Plug-In



Style A

### DIMENSIONS INCHES



Style B

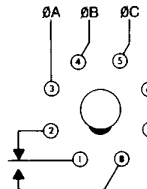


Figure 1  
RB-08 or OT-08

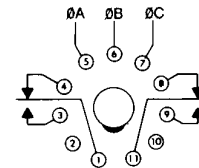


Figure 2  
RB-11

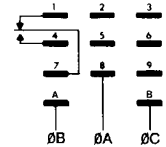


Figure 3  
QC-11

### SPECIFICATIONS

- OPERATING VOLTAGE:** See Table Below
- PHASE SEQUENCE:** ABC (Will Not Operate CBA)
- POWER REQUIRED:** 3 VA (Approximately)
- INDICATOR LED:** Glows When All Conditions Are Normal (On Applicable Models)
- RESET:** Automatic
- U.S. PATENT NUMBER:** 3,611,050

### RESPONSE TIMES

- Models Up to 300 VAC**
  - Operate: 250 Milliseconds
  - Release: 0.5 Seconds
- Models Over 300 VAC**
  - Operate: 1 Second
  - Release: 2.0 Seconds

PHASE/VOLTAGE MONITORS

MODEL NUMBER	OPERATING VOLTAGE	TYPE OF ADJUSTMENT	DROP-OUT VOLTAGE		AGENCY APPROVAL	STOCK	OUTPUT RATING	
			1 Ø LOW	3 Ø LOW				
SLA-120-ALA	95-130 Adj	Lock Shaft	79-108	85-117	---	X	DPDT, 345 VA Inductive; 10 Amps Resistive @ 240 VAC, Figure 2	
SLA-120-ASA		Screwdriver			• & CSA		SPDT, 345 VA Inductive; 10 Amps Resistive @ 240 VAC, Figure 1	
SLA-120-ASB		•			SPDT, 345 VA Inductive; 10 Amps Resistive @ 240 VAC, Figure 3			
SLA-230-ALA	190-270 Adj.	Lock Shaft	158-224	171-243	•	X	DPDT, 345 VA Inductive; 10 Amps Resistive @ 240 VAC, Figure 2	
SLA-230-ASA		Screwdriver			• & CSA	X	SPDT, 345 VA Inductive; 10 Amps Resistive @ 240 VAC, Figure 1	
SLA-230-ASB					•	SPDT, 345 VA Inductive; 10 Amps Resistive @ 240 VAC, Figure 3		
SLA-380-ASA	350-440 Adj.	Screwdriver	290-365	315-396	• & CSA	X	SPDT, 360 VA Inductive; 10 Amps Resistive @ 240 VAC, Figure 1	
SLA-440-ASA	430-480 Adj.		357-398	387-432				
SUA-120-ALA	95-130 Adj.		Lock Shaft	79-108			85-117	• & CSA
SUA-120-ALAU*		▲ & CSA						
SUA-230-ALA		190-270 Adj.			• & CSA			
SUA-230-ALAU*					▲ & CSA			
SUA-380-ASA	350-440 Adj.	Screwdriver	290-365	315-396	• & CSA	X	SPDT, 360 VA Inductive; 10 Amps Resistive @ 240 VAC, Figure 1	
SUA-440-ASA	430-480 Adj.		357-398	387-432				

\*UL Listed only when used with RB-08 relay socket; 5 Amps Resistive @ 240 VAC. All voltages referenced on this page are phase-to-phase. Models also available with fixed operating voltages. Consult factory.

• UL Recognized  
▲ UL Listed