

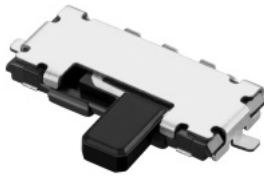
Slide Switch Height 0.7mm, 1.4mm stroke, surface mount type

SSAJ Series



Compact type of body height 0.7mm.

NEW



Typical Specifications

Items	Specifications
Rating (max.) / (min.) (Resistive load)	10mA 5V DC/50 μ A 3V DC
Contact resistance (Initial performance/After lifetime)	300m Ω max./500m Ω max.
Operating force	1.5N
Operating life	10,000cycles

Detector

Push

Slide

Rotary

Encoders

Power

Dual-in-line
Package Type

TACT Switch™

Custom-
Products

Small size
General Use type

Big size
General Use type

Other Use type

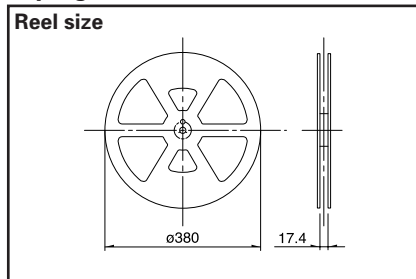
Product Line

Travel (mm)	Operating section directions	Poles	Positions	Changeover timing	Soldering	Location lug	Minimum order unit (pcs.)	Products No.	Drawing No.
1.4	Horizontal	1	2	Not specified	Reflow	With	5,000	SSAJ110100	1
						Without		SSAJ120100	2

Packing specifications

Taping

Unit:mm



Number of packages (pcs.)			Tape width (mm)	Export package measurements (mm)
1 reel	1 case /Japan	1 case /export packing		
5,000	10,000	20,000	16	417 × 409 × 139

Note

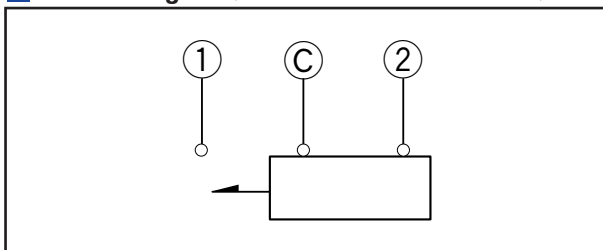
Please place purchase orders per minimum order unit N (integer).

Dimensions







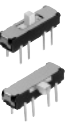

Unit:mm

No.	Style	PC board mounting hole and land dimensions (Viewed from the direction A)
1		
2		

Circuit Diagram (Viewed from Direction A)



List of Varieties

Series		SSAJ	SSAG	SSAH	SSAD	SSSS8	SSSS7 ※	SSSS2	SSSS9 ※	
Photo										
Outline specifications	Travel (mm)	1.4	1.5			1.5 2		2		
	Actuator direction	Horizontal				Vertical Horizontal	Horizontal	Vertical Horizontal		
	Number of poles	1				1 2				
Dimensions (mm)	W	5.5	9.05	9.5	6.7	11.2	8.8	13	14	
	D	2.5	3		3.2	2.6	3	3.5	4.7	
	H	0.7	1.15	0.9	0.7	1.4	2		5	
Operating temperature range		-10°C to +60°C		-30°C to +60°C	-40°C to +85°C	-40°C to +85°C			-10°C to +60°C	
Rating (max.) / (min.) (Resistive load)		10mA 5V DC		1mA 5V DC		0.3A 5V DC	0.3A 4V DC	0.3A 6V DC	0.1A 12V DC	
		50μA 3V DC								
Electrical performance	Initial contact resistance	300mΩ max.	200mΩ max.		100mΩ max.	70mΩ max.			30mΩ max.	
	Insulation resistance	100MΩ min. 100V DC					100MΩ min. 500V DC			
	Voltage proof	100V AC for 1minute					500V AC for 1minute			
Mechanical performance	Terminal strength		3N for 1minute							
	Actuator strength	Operating direction	10N		5N	10N		20N	30N	
		Pulling direction	10N Static force					10N		
Durability	Operating life without load	10,000cycles 500mΩ max.	100,000cycles 500mΩ max.	10,000cycles 300mΩ max.	10,000cycles 100mΩ max. ※2				10,000cycles 60mΩ max.	
	Operating life without load Load:as rating				10,000cycles 200mΩ max.				10,000cycles 80mΩ max.	
Environmental performance	Cold	-40±2°C for 96h	-20±2°C for 96h			-40°C for 96h	-20°C for 96h			
	Dry heat	85±2°C for 96h								
	Damp heat	40±2°C, 90~95%RH for 96h								
Soldering	Manual soldering	350±5°C 3s max.			300±5°C 5s max.		300±5°C 3s max.	350±10°C 4s max.	300±10°C 5s max.	
	Dip soldering							260±5°C 3±1s	260±5°C 5 ⁹ s (2回)	
	Reflow soldering	Please see P.182								
Poles-positions	1-2	●	—	—	●	●	●	●	●	
	1-3	—	●	●	—	●	●	●	●	
	1-4	—				●	—	●	—	
	2-2	—				●	—	●	●	
	2-3	—				●	—	●	●	
	2-4	—						●	—	
	4-2	—								
Page		138	140	143	145	147	151	154	158	

- Slide Switches Soldering Conditions182
- Slide Switches Cautions183

Note

※The operating temperature range for automotive applications can be raised upon request. Please contact us for details.

Detector

Push

Slide

Rotary

Encoders

Power

Dual-in-line
Package Type

TACT Switch™

Custom-
Products

Small size
General Use type

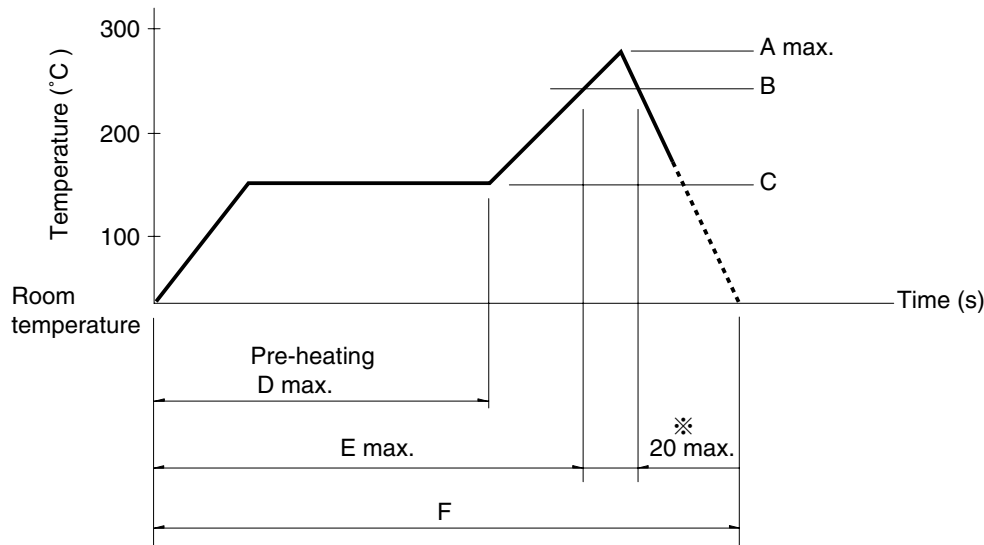
Big size
General Use type

Other Use type

Soldering Conditions

Example of Reflow Soldering Condition

1. Heating method: Double heating method with infrared heater.
2. Temperature measurement: Thermocouple 0.1 to 0.2 φ CA (K) or CC (T) at soldering portion (copper foil surface). A heat resisting tape should be used for fixed measurement.
3. Temperature profile



Detector

Push

Slide

Rotary

Encoders

Power

Dual-in-line
Package Type

TACT Switch™

Custom-
Products

Small size
General Use type

Big size
General Use type

Other Use type

Series (Reflow type)			A (°C) 3s max.	B (°C)	C (°C)	D (s)	E (s)	F (s)
SSSS2	Vertical	1-pole, 3-positions	250	200	150	120	—	—
	Horizontal	1-pole, 2-positions						
	Vertical	1-pole, 2-positions	240					
	Horizontal	1-pole, 3-positions 2-poles, 3-positions						
SSSS7			250					
SSAH, SSAG			260	230	150	120	—	—
SSAD			240	220				
SSSS8	Horizontal	1-pole, 2-positions 1-pole, 3-positions (1.5mm)	255	200				
		1-pole, 3-positions (2mm) 1-pole, 4-positions 2-poles, 2-positions	240	220				
	Vertical							

Notes

1. The condition mentioned above is the temperature on the mounting surface of a PC board. There are cases where the PC board's temperature greatly differs from that of the switch, depending on the PC board's material, size, thickness, etc. The above-stated conditions shall also apply to switch surface temperatures.
2. Soldering conditions differ depending on reflow soldering machines. Prior verification of soldering condition is highly recommended.
3. ※SSAH and SSAG only 40's.