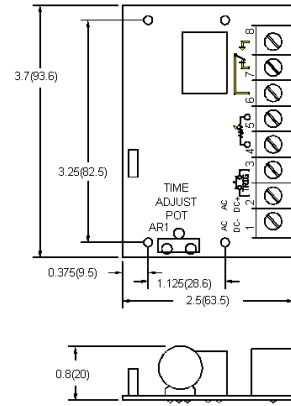
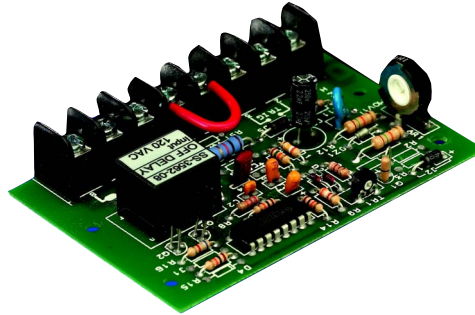


TIME DELAY RELAYS

Non-Programmable
Open Board



All Dimensions in
Inches (Millimeters)

- ◆ Open Board design for OEM applications
- ◆ 12 separate timing ranges from 0.03 seconds to 120 minutes
- ◆ Choice of on-board or remote adjustment of time delay setting
- ◆ Custom designs available
- ◆ 5A SPDT output contacts

Timing Ranges

** TIMING RANGE TABLE	
COMPLETE PRODUCT NUMBER USING TWO DIGIT CODE FROM TABLE BELOW i.e., SS-3268-04	
Time Delay Range	Code
0.03 - 1 Sec.	02
0.2 - 5 Sec.	04
0.5 - 15 Sec.	06
1 - 30 Sec.	07
2 - 60 Sec.	08
6 - 180 Sec.	10
10 - 300 Sec.	12
20 Sec. - 10 Min.	22
30 Sec. - 15 Min.	14
1 Min. - 30 Min.	15
2 Min. - 60 Min.	16
4 Min. - 2 Hr.	17

For Fixed Time Delay (at no charge): add suffix "F" and time delay desired to basic Product Number, i.e., SS-3262-F5S is an On Delay fixed at 5 seconds.



800-238-7474

www.macromatic.com
whats-up@macromatic.com

FUNCTION ■	INPUT VOLTAGE	PRODUCT NUMBER ** COMPLETE PRODUCT NUMBER USING 2 DIGIT CODE FROM TABLE BELOW LEFT
ON DELAY	120V AC	SS-3262-**
	12V AC/DC	SS-3266-**
	24V AC/DC	SS-3268-**
INTERVAL ON	120V AC	SS-3362-**
	12V AC/DC	SS-3366-**
	24V AC/DC	SS-3368-**
FLASHER	120V AC	SS-3162-**
	12V AC/DC	SS-3166-**
	24V AC/DC	SS-3168-**
OFF DELAY	120V AC	SS-3562-**
	12V AC/DC	SS-3566-**
	24V AC/DC	SS-3568-**
SINGLE SHOT	120V AC	SS-3062-**
	12V AC/DC	SS-3066-**
	24V AC/DC	SS-3068-**

■ See Pages 18-19 for definitions & explanations of Timing Functions.

Custom Design versions of Open Board time delay relays are available—contact Macromatic for additional information.

Application Data

Voltage Tolerance:

AC Operation: +10/-15% of nominal at 50/60 Hz.
DC Operation: +10/-15% of nominal.

Load (Burden):

Less than 2.5 VA.

Repeat Accuracy:

+2% for constant voltage and temperature

Setting Accuracy:

Maximum Setting: +10%, -0%
Minimum Setting: +0%, -50%.

Triggering Off Delay & Single Shot Units:

Timing sequence must be initiated only after input power is applied to unit. Minimum required trigger switch closure time is 0.1 seconds.

Compatibility:

Do not use a solid state switch to initiate the timing sequence—problems with leakage current could occur. Contact Macromatic Controls for additional information.

Temperature:

0° to 60°C (32° to 140°F)

Recycle Time:

0.2 Seconds

Transient Protection:

10,000 volts for 20 microseconds

Output Contacts:

SPDT 5A Resistive @120VAC/28VDC,
1/6HP @120VAC

Life:

Mechanical: 10,000,000 operations
Full Load: 30,000 operations