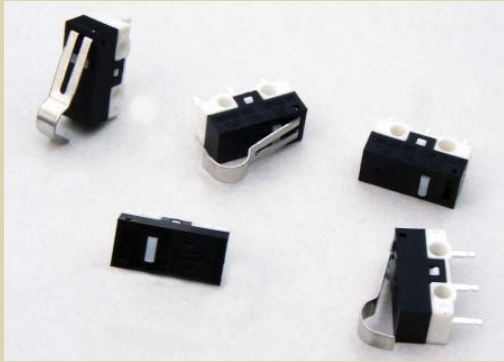


# SERIES SS SWITCHES



E-SWITCH™

## SNAP ACTION SWITCHES - SUB-MINIATURE



### FEATURES & BENEFITS

Subminiature package size  
Designed for higher reliability applications

### APPLICATIONS / MARKETS

Appliance  
Timing controls  
Vending machines  
Gaming  
Industrial Controls

### SPECIFICATIONS

Contact Rating: Gold .4VA max. @ 20 VDC or VAC Max.  
0.1 Amps @ 5 VDC  
1.5 Amps @ 250 VAC - UL  
3 Amps @ 125 VAC - UL

Life Expectancy: 100,000 cycles typical

Mechanical Life: 1,000,000 cycles typical

Insulation Resistance: 100MΩ (Min @ 500V DC)

Dielectric Strength: 500VDC

Operating Temperature: -25°C to +75°C

Operating Force: See Chart

### MATERIALS

Switch Housing: High Temperature PBT (UL94 V-0)

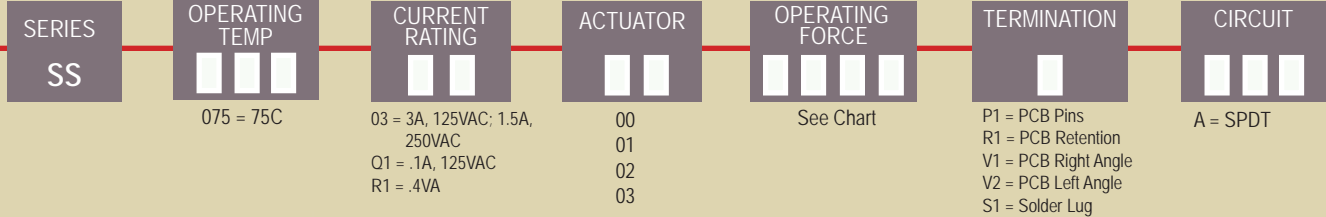
Actuator Button: High Temperature PBT (UL94 V-0)

Terminals: Copper Alloy

Contacts: Silver (std) or Gold

Spring: Spring Steel

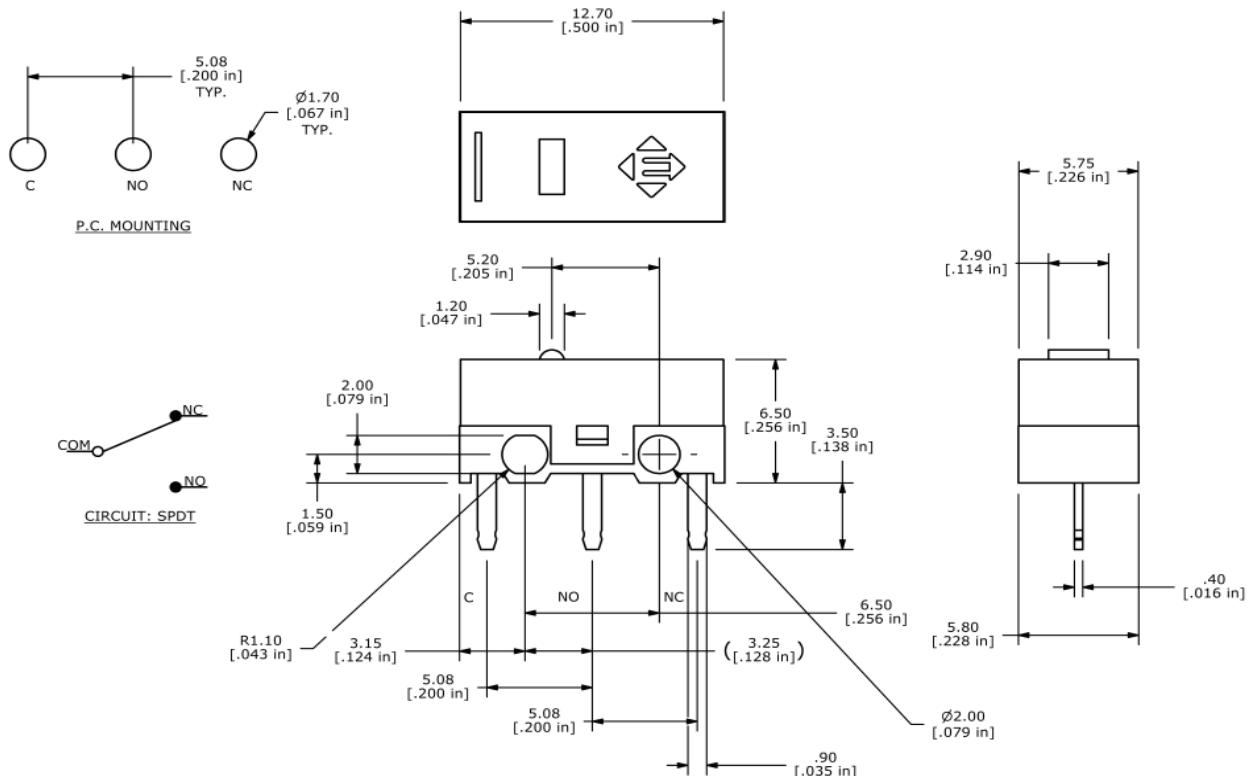
### HOW TO ORDER:



### Example Ordering Number

SS - 075 - 03 - 01 - F030 - P1 - A

Specifications subject to change without notice.



# SERIES SS SWITCHES

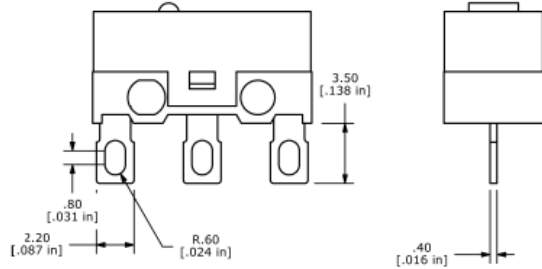


E-SWITCH™

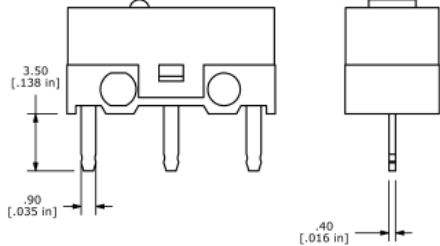
## SNAP ACTION SWITCHES - SUB-MINIATURE

### TERMINATION OPTIONS

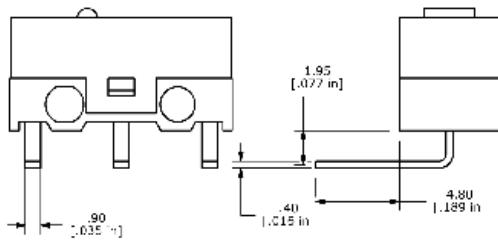
Solder Lug Terminal



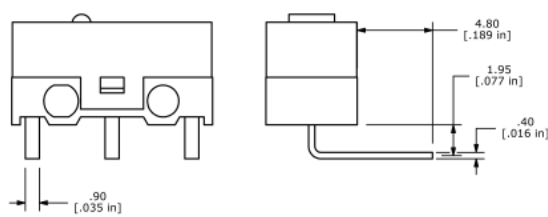
PCB Terminal



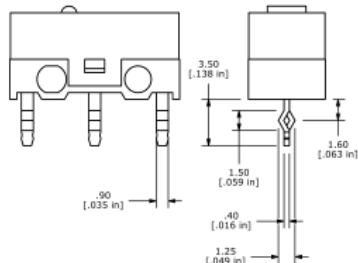
V1 Terminal



V2 Terminal



Crimped Terminal

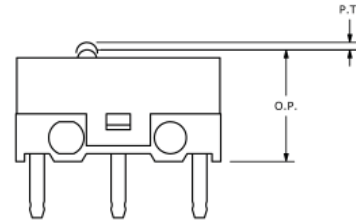


### ACTUATOR OPTIONS

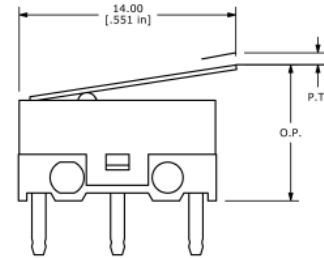
Actuation Force Chart

Actuator	Operating / Return Forces				OP	PT
00	70/25	90/40	110/50	130/60	5.5 +/- 0.2	0.75 Max
01	20/5	30/10	35/10	40/15	7.3 +/- 0.8	3.2 Max
02	15/5	25/10	30/10	35/10	9.3 +/- 0.8	3.6 Max
03	20/5	30/10	40/15	50/15	9.65 +/- 0.8	3.6 Max

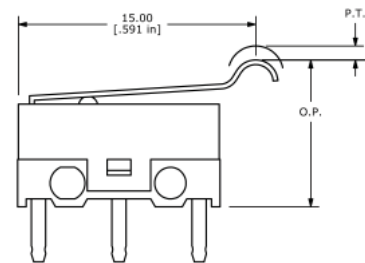
00 Actuator



01 Actuator



02 Actuator



03 Actuator

