

# Rotary Switch 12-position General-purpose Vertical Type

SRRM Series



General-purpose type switch applicable to a wide range of electronic devices.

- Detector
- Push
- Slide
- Rotary**
- Encoders
- Power
- Dual-in-line Package Type
- TACT Switch™
- Custom-Products



## Typical Specifications

Items		Specifications
Rating (max.) / (min.) (Resistive load)		0.25A 30V DC/50μA 3V DC
Contact resistance (Initial/After operating life)		20mΩ max./60mΩ max.
Rotational torque	Shorting	80±30mN·m
	Non-shorting	70±30mN·m
Operating life	Without load	10,000cycles
	With load	10,000cycles (0.25A 30V DC)

## Product Line

Poles	Positions	Changeover angle	Changeover timing	Actuator configuration	Actuator length (mm)	Minimum order unit (pcs.)	Product No.
1	12 Endless	30±3°	Shorting	Round shaft with groove	15	600	SRRM1C6200
				Flat	20		SRRM1C5400
Non shorting※	Round shaft with groove		15	SRRM254700			
			20	SRRM262400			
Shorting	Flat		20	SRRM264300			
			Round shaft with groove	20	SRRM342800		
18-tooth serration	20	SRRM433700					
2	5	30±3°	Shorting	Round shaft with groove	15	600	SRRM254700
6	Round shaft with groove			15	SRRM262400		
		20	Flat	20	SRRM264300		
3	4			Shorting	Round shaft with groove		20
		4	3		18-tooth serration		20

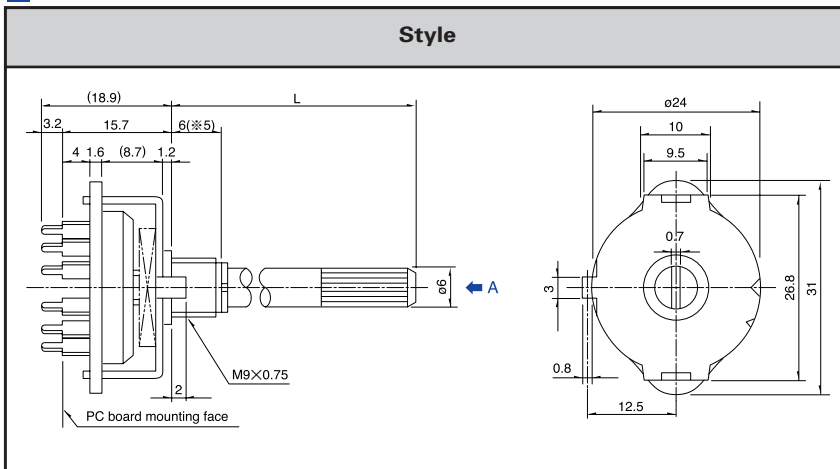
## Packing Specifications

### Bulk

Number of packages (pcs.)		Export package measurements (mm)
1 case /Japan	1 case /export packing	
100	600	369×349×367

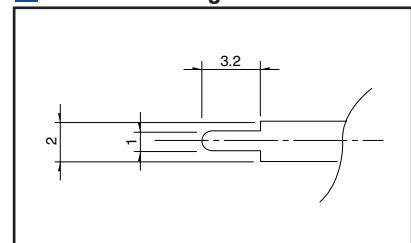
## Dimensions

Unit:mm



## Terminal Configuration

Unit:mm



## Notes

1. Products other than those listed in the above chart are also available. Please contact us for details.
2. ※Non-shorting type requires external wiring of common terminals.
3. All the axis are die casting shafts.
4. Please place purchase orders per minimum order unit N (integer).
5. ※Round-shaft with groove (shaft length 20mm) type are 8mm length.

Refer to P.199 for shaft configurations.  
Refer to P.201 for attached parts.

## Standard Circuit Diagram Shorting Circuit Diagram

Unit:mm

	1-pole, 12-positions	2-poles, 5-positions	2-poles, 6-positions	3-poles, 4-positions	4-poles, 3-positions
<b>Circuit diagram</b>					
<b>PC board mounting hole dimensions (Viewed from the direction A)</b>					

- Detector
- Push
- Slide
- Rotary
- Encoders
- Power
- Dual-in-line Package Type
- TACT Switch™
- Custom-Products

## Non Shorting Circuit Diagram









Unit:mm

	1-pole, 12-positions	2-poles, 6-positions
<b>Circuit diagram</b>		
<b>PC board mounting hole dimensions (Viewed from the direction A)</b>		

### Notes

1. The mark in the above table indicate a stopper with the shaft turned fully counterclockwise when viewed from direction A of the diagrams.
2. Note that the location of C terminal differs depending on the number of positions.
3. External wiring is required if specified in the above diagrams.

## List of Varieties

Series	SRBD	SRBQ		SRRM	SRBV	SRBM		SRRN				
		Insertion	Reflow type			Rotary	Pulse					
Detector												
Push												
Slide												
Rotary	Outline specifications	Step angle	36°	40±3°	30±3°		18±3°	30±3°				
		Number of poles	1		1 2 3 4	1	1 2	2 3 4				
Encoders	Dimensions (mm)	W	10		11.4	16.2	12.5	—				
		D	10		12.4	18.5	10	—				
		H	1.7		3.5	7.5	11.5	—				
Power	Operating temperature range	-25°C to +85°C		-10°C to +60°C		-40°C to +85°C		-10°C to +60°C				
Dual-in-line Package Type	Rating(max.)/(min.) (Resistive load)	1mA 5V DC 50μA 3V DC		0.1A 16V DC 50μA 3V DC	0.25A 30V DC 50μA 3V DC	0.3A 16V DC 50μA 3V DC	0.1A 16V DC 50μA 3V DC	0.15A 12V DC 50μA 3V DC				
TACT Switch™	Electrical performance	Insulation resistance	100MΩ min. 100V DC		100MΩ min. 500V DC	100MΩ min. 100V DC		100MΩ min. 500V DC				
Custom-Products		Voltage proof	100V AC for 1minute		500V AC for 1minute	100V AC for 1minute		500V AC for 1minute				
		Terminal strength	3N for 1minute	5N for 1minute	10N for 1minute	5N for 1minute						
Mechanical performance	Actuator strength	Rotational direction	—		1N·m	0.6N·m	0.5N·m	—	1N·m			
		Push direction	50N	20N	100N							
	Wobble of actuator	Load at the tip of shaft SRRM : 5N SRBV, SRBQ : 1N		The below table shows for SRBQ (Unit : mm)			The below table shows for SRBV (Unit : mm)			Measuring position from mounting surface	Shaft wobble (max. value)	Applicable mounting dimension
		(Unit : mm)		Distance from mounting surface to the tip of shaft	Shaft wobble (max. value)	(Unit : mm)			10mm	0.17 mm	15 mm	
Measuring position from mounting surface		Shaft wobble (max. value)	Applicable mounting dimension	below 5	0.5 max.	Measuring position from mounting surface	Shaft wobble (max. value)	Applicable mounting dimension	15mm	0.25 mm	20 mm	
Durability	Operating life without load	10,000cycles 250mΩ max.	10,000cycles 100mΩ max.	10,000cycles 40mΩ max.	10,000cycles 100mΩ max.		10,000cycles 70mΩ max.					
	Operating life with load Load : (at rated load)	10,000cycles 250mΩ max.	10,000cycles 100mΩ max.	10,000cycles 60mΩ max.	10,000cycles 150mΩ max.		10,000cycles 100mΩ max.					
Environmental performance	Cold	-40±2°C for 500h		-20±2°C for 96h								
	Dry heat	85±2°C for 500h		85±2°C for 96h								
	Damp heat	60±2°C, 90 to 95%RH for 500h		40±2°C, 90 to 95%RH for 96h								
Soldering	Manual soldering	—		350±10°C 3 <sup>+1</sup> s	350±5°C 3s max.	350±10°C, 3 <sup>+1</sup> s						
	Dip soldering	—		260±5°C 5±1s	—	260±5°C 10±1s	260±3°C 5s max.	260±5°C 10±1s				
	Reflow soldering	Please see P.200		—								
	Page	186	188	195	193	190	197					

- Rotary Switches Shaft Style .....199
- Rotary Switches Soldering Conditions .....200
- Rotary Switches Attached Parts .....201
- Rotary Switches Cautions .....202

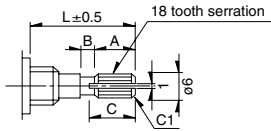
## Shaft Configurations

### 18-tooth Serration Shaft

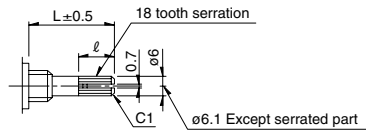
The shaft shows the position in which it is turned fully counterclockwise.

Unit:mm

#### ① Cutting Shaft



#### ② Die Casting Shaft



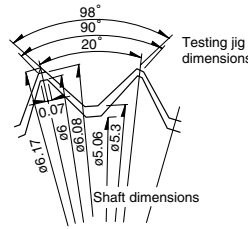
Shaft length L	A	B	C
15	6	1	7
20	10	2	11

Unit:mm

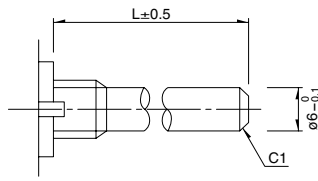
Shaft length L	l
15	8
20	12

### Details About Serration

- (1) The mold dimensions of standard serration and the dimensions of test jigs are as shown in the figure at left.
- (2) Position of the serration bottom  
When the shaft is turned fully counterclockwise, the position of the serration bottom is on the AA line.
- (3) Slitting angle  
The slitting angle (position) is not specified.

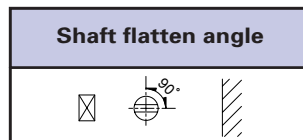
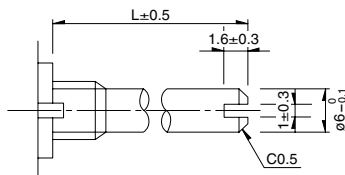


### Round Shaft



### Round Shaft with Groove

The shaft shows the position in which it is turned fully counterclockwise.

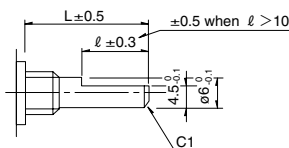


### Flat Shaft

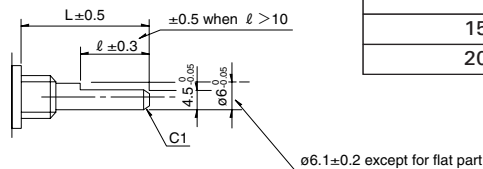
The shaft shows the position in which it is turned fully counterclockwise.

Unit:mm

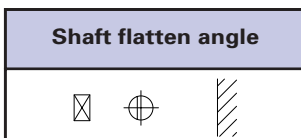
#### Cutting Shaft



#### Die Casting Shaft



Shaft length L	l
15	7
20	12



### Note

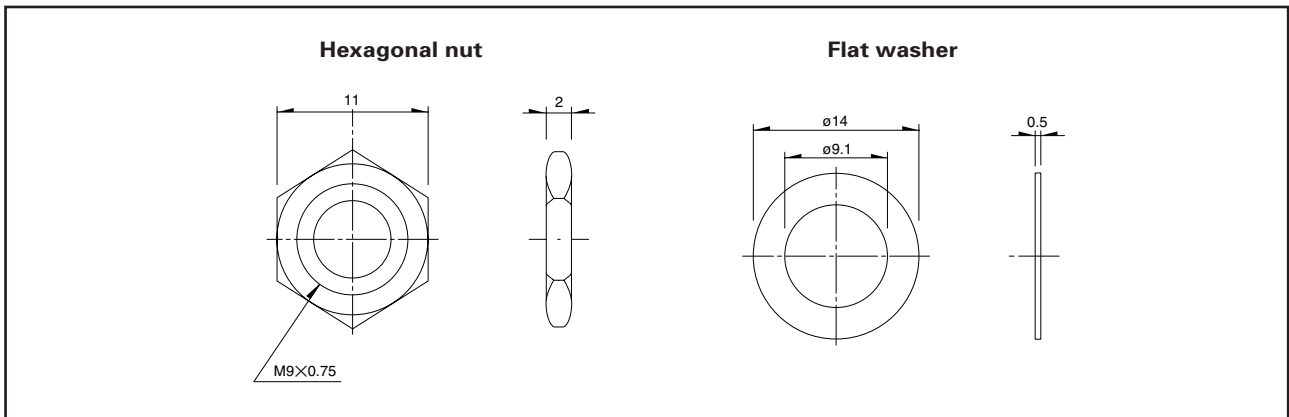
SRBM Series are based on (printed terminal direction). SRRM, SRRN, SRBV Series are based on (panel lug).

## Attached Parts

The following parts are included with the product.

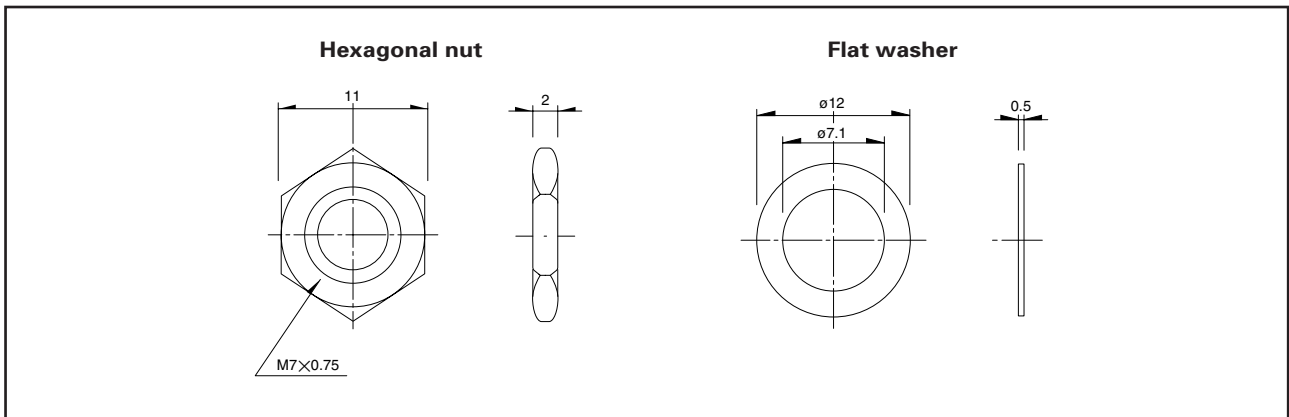
### ■ SRRM, SRBV

Unit:mm



### ■ SRBM, SRRN

Unit:mm



Detector

Push

Slide

Rotary

Encoders

Power

Dual-in-line  
Package Type

TACT Switch™

Custom-  
Products