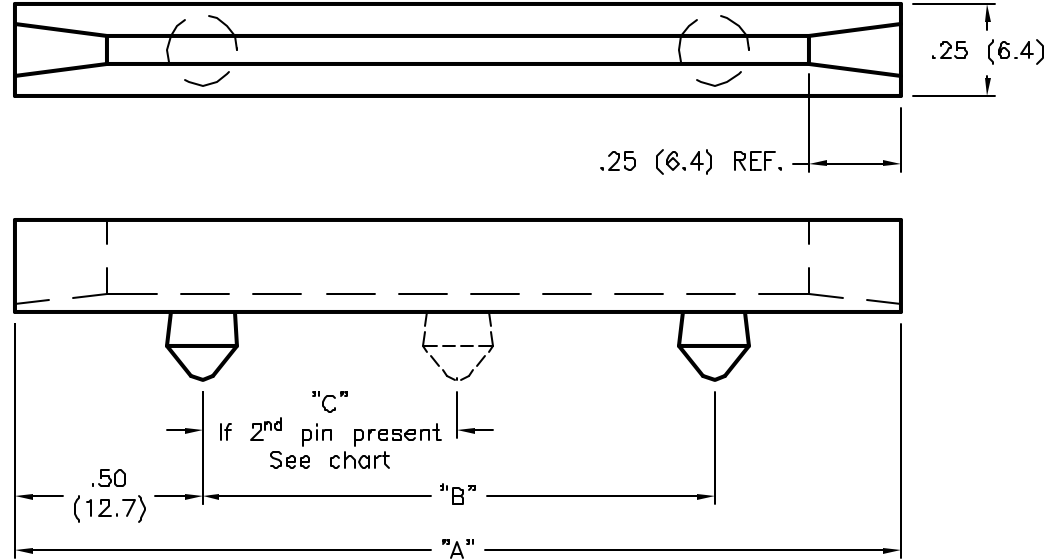
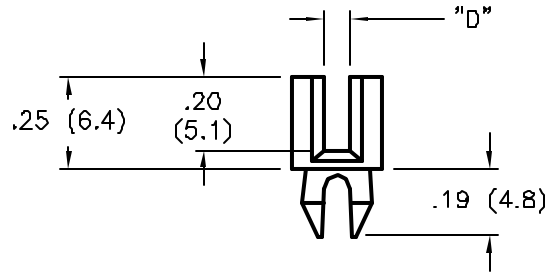


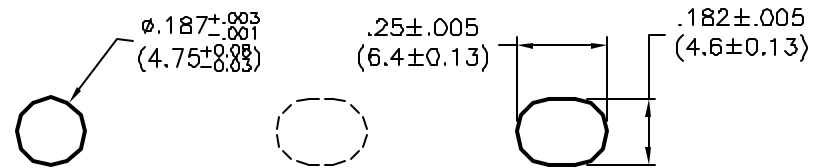
REVISIONS

DCP #	REV	DESCRIPTION	DRAWN	DATE	CHECKD	DATE	APPRVD	DATE
1865	A	Released	JWM	3/8/04	JN	07/17/08	JN	07/17/08



- NOTES:
 1. MATERIAL: GLASS-FILLED NYLON
 2. COLOR: BLACK.

SPC Type No.	"A" ±.062 [±1.6]	"B" ±.032 [±0.8]	"C" ±.015 [±0.38]	Nominal Board Thickness	"D" ±.005 [±0.13]
SPC23713	2.50 [63.5]	1.50 [38.1]	---	1/16 [1.6]	.080 [2.0]
SPC23709	4.50 [114.3]	3.50 [88.9]	---	3/32 [2.4]	.102 [2.6]
SPC23714	6.00 [152.4]	5.00 [127.0]	---		
SPC23715	8.00 [203.2]	7.00 [177.8]	3.50 [88.9]	1/8 [3.2]	.132 [3.4]
SPC23716	6.00 [152.4]	5.00 [127.0]	---		



TYPICAL MOUNTING HOLES

SLOTING OR ELONGATING OF 2ND AND 3RD MOUNTING HOLE IS RECOMMENDED TO ALLOW FOR LENGTH VARIATIONS IN MOLDING AND ASSEMBLY EASE.

DISCLAIMER:
 ALL STATEMENTS AND TECHNICAL INFORMATION CONTAINED HEREIN ARE BASED UPON INFORMATION AND/OR TESTS WE BELIEVE TO BE ACCURATE AND RELIABLE. SINCE CONDITIONS OF USE ARE BEYOND OUR CONTROL, THE USER SHALL DETERMINE THE SUITABILITY OF THE PRODUCT FOR THE INTENDED USE AND ASSUME ALL RISK AND LIABILITY WHATSOEVER IN CONNECTION THEREWITH.

TOLERANCES:
 Tolerances: Unless Otherwise Specified:
 .XX = ±0.10
 .XXX = ±0.05
 Fractional = ±1/64
 Angles = ±1°

DRAWN BY:	DATE:
Jeff McVicker	3/8/04
CHECKED BY:	DATE:
Jason Nash	07/17/08
APPROVED BY:	DATE:
Jason Nash	07/17/08

DRAWING TITLE: Deep Channel Card Guides			
SIZE A	DWG. NO. TA-886	ELECTRONIC FILE TA-886.dwg	REV A
SCALE: NTS	U.O.M.: INCHES [mm]	SHEET: 1 OF 1	