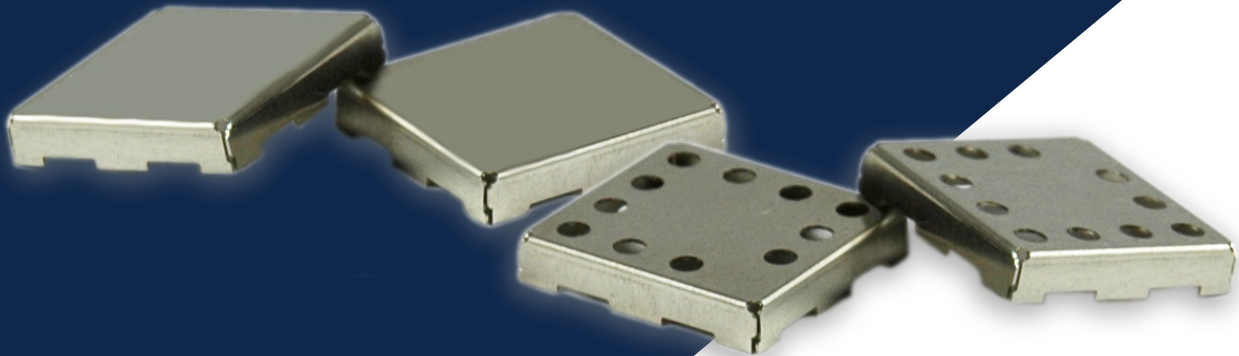


One-Piece SMS Surface Mount Shield



Two-Piece SMS Surface Mount Shield



Applications

- Short lead times
- Automatic placement
- Cost effective
- No tooling costs

Material

Pre-tin plated steel
Alloy 770

One-Piece SMS Shield

One-Piece

- Form down construction supplied in tape & reel packaging

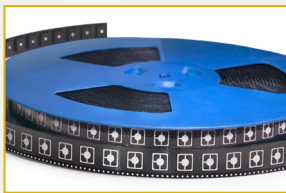


Shield shown in tape & reel packaging

Two-Piece SMS Shield

Two-Piece

- Frame & cover, form down construction (frame supplied in tape & reel packaging)



Shield shown in tape & reel packaging



www.LeaderTechInc.com

ISO 9001: 2015 CERTIFIED RoHS COMPLIANT

One-Piece SMS Surface Mount Shield

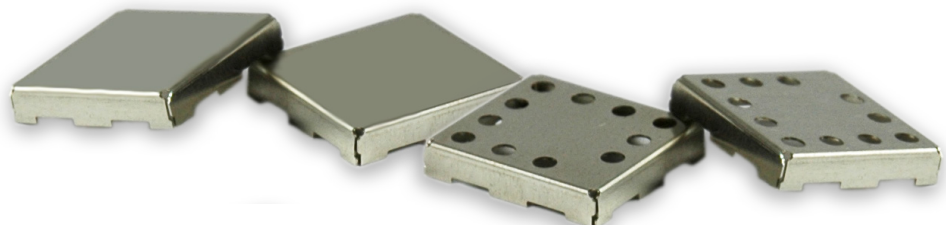
Leader Tech SMS - Surface Mount Shields offer a highly reliable, cost effective, off-the-shelf solution for most surface mount shielding applications. Our SMS shields are supplied in tape & reel packaging and are suited for any volume application including automated pick and place assembly operations.

Our one piece SMS style can be specified for applications that require no inspection or repair of shielded elements.

ONE-PIECE SURFACE MOUNT SHIELD										
Shield Width	Shield Length		Shield Height		Vented	Parts per Reel	Material Options		Part Number	
							Standard	**add -N to P/N		
0.500	12.700	0.538	13.665	0.100	2.540	Yes	1000	.008" Pre-Tin Matte Steel	008" Alloy 770**	SMS-101
0.500	12.700	0.538	13.665	0.100	2.540	No	1000	.008" Pre-Tin Matte Steel	008" Alloy 770**	SMS-301
0.650	16.510	0.650	16.510	0.142	3.607	Yes	700	.008" Pre-Tin Matte Steel	008" Alloy 770**	SMS-102
0.650	16.510	0.650	16.510	0.142	3.607	No	700	.008" Pre-Tin Matte Steel	008" Alloy 770**	SMS-302
0.728	18.491	1.156	29.362	0.276	7.010	No	325	.008" Pre-Tin Matte Steel	008" Alloy 770**	SMS-309
0.750	19.050	0.750	19.050	0.200	5.080	Yes	300	.008" Pre-Tin Matte Steel	008" Alloy 770**	SMS-155
0.750	19.050	0.750	19.050	0.200	5.080	No	300	.008" Pre-Tin Matte Steel	008" Alloy 770**	SMS-355
0.835	21.209	1.543	39.192	0.286	7.264	No	280	.008" Pre-Tin Matte Steel	008" Alloy 770**	SMS-356
1.000	25.400	1.500	38.100	0.236	5.994	Yes	250	.008" Pre-Tin Matte Steel	008" Alloy 770**	SMS-105
1.000	25.400	1.500	38.100	0.236	5.994	No	250	.008" Pre-Tin Matte Steel	008" Alloy 770**	SMS-305
1.032	26.213	1.032	26.213	0.200	5.080	Yes	300	.008" Pre-Tin Matte Steel	008" Alloy 770**	SMS-103
1.032	26.213	1.032	26.213	0.200	5.080	No	300	.008" Pre-Tin Matte Steel	008" Alloy 770**	SMS-303
1.034	26.264	1.034	26.264	0.070	1.778	No	600	.010" Pre-Tin Bright Steel	010" Alloy 770**	SMS-352
1.034	26.264	1.034	26.264	0.098	2.489	No	600	.010" Pre-Tin Bright Steel	010" Alloy 770**	SMS-354
1.070	27.178	1.304	33.122	0.236	5.994	No	210	.008" Pre-Tin Matte Steel	008" Alloy 770**	SMS-357
1.070	27.178	1.540	39.116	0.236	5.994	No	240	.008" Pre-Tin Matte Steel	008" Alloy 770**	SMS-358
1.070	27.178	1.623	41.224	0.236	5.994	No	230	.008" Pre-Tin Matte Steel	008" Alloy 770**	SMS-359
1.070	27.178	1.767	44.882	0.236	5.994	No	230	.008" Pre-Tin Matte Steel	008" Alloy 770**	SMS-360
1.070	27.178	2.206	56.032	0.236	5.994	No	200	.008" Pre-Tin Matte Steel	008" Alloy 770**	SMS-361
1.070	27.178	2.758	70.053	0.236	5.994	No	250	.008" Pre-Tin Matte Steel	008" Alloy 770**	SMS-362
1.201	30.505	1.732	43.993	0.118	2.997	No	370	.008" Pre-Tin Matte Steel	008" Alloy 770**	SMS-310
1.260	32.004	1.260	32.004	0.236	5.994	Yes	225	.008" Pre-Tin Matte Steel	008" Alloy 770**	SMS-104
1.260	32.004	1.260	32.004	0.236	5.994	No	225	.008" Pre-Tin Matte Steel	008" Alloy 770**	SMS-304
1.326	33.680	1.450	36.830	0.200	5.080	Yes	300	.008" Pre-Tin Matte Steel	008" Alloy 770**	SMS-106
1.326	33.680	1.450	36.830	0.200	5.080	No	300	.008" Pre-Tin Matte Steel	008" Alloy 770**	SMS-306
1.747	44.374	1.747	44.374	0.384	9.754	Yes	120	.008" Pre-Tin Matte Steel	008" Alloy 770**	SMS-107
1.747	44.374	1.747	44.374	0.384	9.754	No	120	.008" Pre-Tin Matte Steel	008" Alloy 770**	SMS-307
1.805	45.847	3.979	101.067	0.236	5.994	No	130	.008" Pre-Tin Matte Steel	008" Alloy 770**	SMS-363

Black = inches Blue = mm

**When ordering Alloy 770 include '-N' in part number. Example: SMS-1XX-N



Two-Piece SMS Surface Mount Shield

Leader Tech SMS - Surface Mount Shields offer a highly reliable, cost effective, off-the-shelf solution for most surface mount shielding applications. Our SMS shields are supplied in tape & reel packaging and are suited for any volume application including automated pick and place assembly operations.

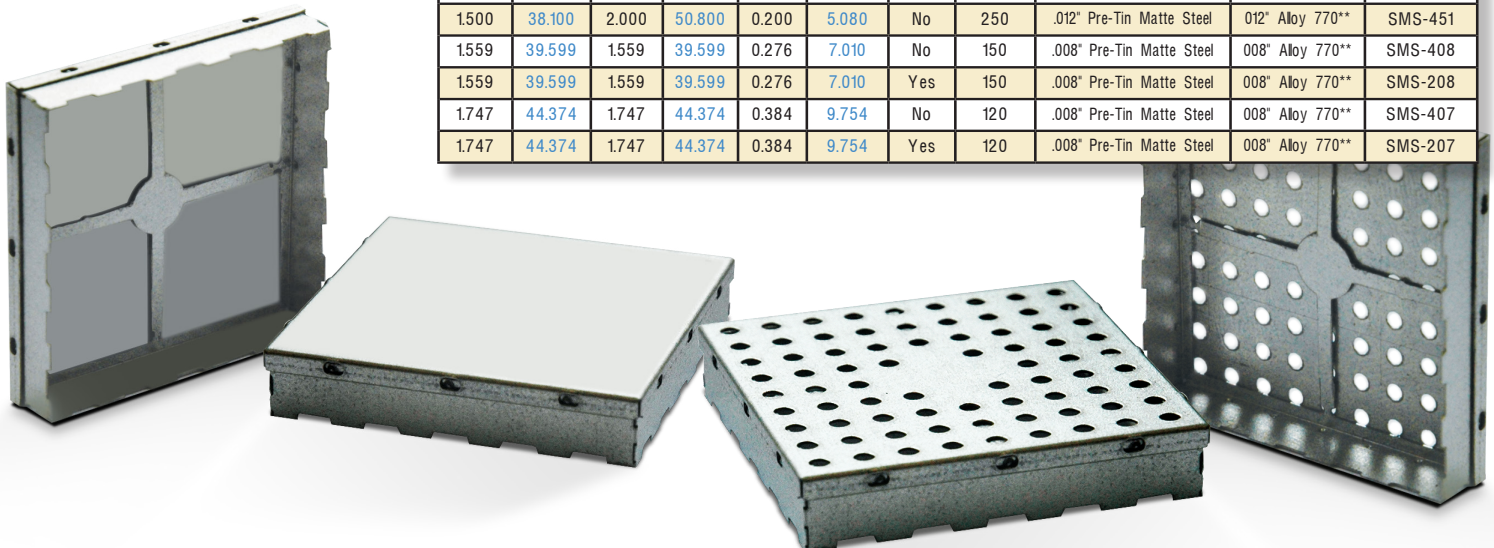
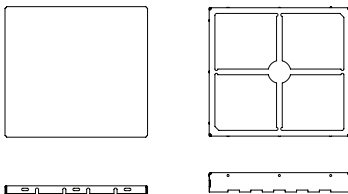
For board applications that require inspection, we offer a two piece Leader Tech SMS shield. This style allows for fast and easy removal of the cover providing full access to components.

Black = inches Blue = mm

*SMS-4XX-C: Part number when ordering cover only | SMS-4XX-F: Part number when ordering frame only

**When ordering Alloy 770 include '-N' in part number. Example: SMS-2XX-N

R: Removable Pick Spot. Example: SMS-204R



TWO-PIECE SURFACE MOUNT SHIELD										
Shield Width	Shield Length		Shield Height		Vented	Parts per Reel	Material Options		Part Number*	
							Standard	**add -N to P/N		
0.500	12.700	0.538	13.665	0.100	2.540	No	1000	.008" Pre-Tin Matte Steel	008" Alloy 770**	SMS-401
0.500	12.700	0.538	13.665	0.100	2.540	Yes	1000	.008" Pre-Tin Matte Steel	008" Alloy 770**	SMS-201
0.650	16.510	0.650	16.510	0.142	3.607	No	700	.008" Pre-Tin Matte Steel	008" Alloy 770**	SMS-402
0.650	16.510	0.650	16.510	0.142	3.607	Yes	700	.008" Pre-Tin Matte Steel	008" Alloy 770**	SMS-202
0.728	18.491	1.156	29.362	0.276	7.010	No	325	.008" Pre-Tin Matte Steel	008" Alloy 770**	SMS-409
0.750	19.050	0.750	19.050	0.200	5.080	Yes	300	.008" Pre-Tin Matte Steel	008" Alloy 770**	SMS-255
0.750	19.050	0.750	19.050	0.200	5.080	No	300	.008" Pre-Tin Matte Steel	008" Alloy 770**	SMS-455
0.835	21.209	1.543	39.192	0.286	7.264	No	280	.008" Pre-Tin Matte Steel	008" Alloy 770**	SMS-456
1.000	25.400	1.500	38.100	0.236	5.994	No	250	.008" Pre-Tin Matte Steel	008" Alloy 770**	SMS-405
1.000	25.400	1.500	38.100	0.236	5.994	Yes	250	.008" Pre-Tin Matte Steel	008" Alloy 770**	SMS-205
1.032	26.210	1.032	26.210	0.200	5.080	Yes	300	-	008" Alloy 770**	SMS-203-N
1.032	26.210	1.032	26.210	0.200	5.080	Yes	300	.008" Pre-Tin Matte Steel	-	SMS-203-M
1.032	26.210	1.032	26.210	0.200	5.080	No	300	-	008" Alloy 770**	SMS-403-N
1.032	26.210	1.032	26.210	0.200	5.080	No	300	.008" Pre-Tin Matte Steel	-	SMS-403-M
1.034	26.264	1.034	26.264	0.200	5.080	Yes	300	.010" Pre-Tin Bright Steel	-	SMS-203
1.034	26.264	1.034	26.264	0.200	5.080	No	300	.010" Pre-Tin Bright Steel	-	SMS-403
1.034	26.264	1.034	26.264	0.070	1.778	No	300	.010" Pre-Tin Bright Steel	010" Alloy 770**	SMS-452
1.034	26.264	1.034	26.264	0.070	1.778	Yes	300	.010" Pre-Tin Bright Steel	010" Alloy 770**	SMS-252
1.034	26.264	1.034	26.264	0.098	2.489	Yes	600	.010" Pre-Tin Bright Steel	010" Alloy 770**	SMS-254
1.070	27.178	1.304	33.122	0.236	5.994	No	210	.008" Pre-Tin Matte Steel	008" Alloy 770**	SMS-457
1.070	27.178	1.540	39.116	0.236	5.994	No	240	.008" Pre-Tin Matte Steel	008" Alloy 770**	SMS-458
1.070	27.178	1.623	41.224	0.236	5.994	No	230	.008" Pre-Tin Matte Steel	008" Alloy 770**	SMS-459
1.070	27.178	1.767	44.882	0.236	5.994	No	230	.008" Pre-Tin Matte Steel	008" Alloy 770**	SMS-460
1.070	27.178	2.206	56.032	0.236	5.994	No	200	.008" Pre-Tin Matte Steel	008" Alloy 770**	SMS-461
1.070	27.178	2.758	70.053	0.236	5.994	No	250	.008" Pre-Tin Matte Steel	008" Alloy 770**	SMS-462
1.070	27.178	2.758	70.053	0.413	10.490	No	125	.008" Pre-Tin Matte Steel	008" Alloy 770**	SMS-464
1.201	30.505	1.732	43.993	0.118	2.997	No	370	.008" Pre-Tin Matte Steel	008" Alloy 770**	SMS-210
1.201	30.505	1.732	43.993	0.118	2.997	No	370	.008" Pre-Tin Matte Steel	008" Alloy 770**	SMS-410
1.260	32.004	1.260	32.004	0.236	5.994	No	225	.008" Pre-Tin Matte Steel	008" Alloy 770**	SMS-404
1.260	32.004	1.260	32.004	0.236	5.994	Yes	225	.008" Pre-Tin Matte Steel	008" Alloy 770**	SMS-204
1.260	32.004	1.260	32.004	0.236	5.994	Yes	225	.008" Pre-Tin Matte Steel	008" Alloy 770**	SMS-204R
1.326	33.680	1.450	36.830	0.200	5.080	No	300	.008" Pre-Tin Matte Steel	008" Alloy 770**	SMS-406
1.326	33.680	1.450	36.830	0.200	5.080	Yes	300	.008" Pre-Tin Matte Steel	008" Alloy 770**	SMS-206
1.500	38.100	2.000	50.800	0.200	5.080	No	250	.012" Pre-Tin Matte Steel	012" Alloy 770**	SMS-451
1.559	39.599	1.559	39.599	0.276	7.010	No	150	.008" Pre-Tin Matte Steel	008" Alloy 770**	SMS-408
1.559	39.599	1.559	39.599	0.276	7.010	Yes	150	.008" Pre-Tin Matte Steel	008" Alloy 770**	SMS-208
1.747	44.374	1.747	44.374	0.384	9.754	No	120	.008" Pre-Tin Matte Steel	008" Alloy 770**	SMS-407
1.747	44.374	1.747	44.374	0.384	9.754	Yes	120	.008" Pre-Tin Matte Steel	008" Alloy 770**	SMS-207

Global EMI Shielding Technology Center
12420 Race Track Rd., Tampa, Florida 33626
866.TECH.EMI (866.832.4364) † 813.855.6921 ‡ 813.855.3291

www.LeaderTechInc.com



EMI/RFI Board, Enclosure, Cable Shielding & Thermal Solutions