

Phase Loss, Under Voltage and Phase Sequence Monitor Relays
Surface Mounted Enclosure

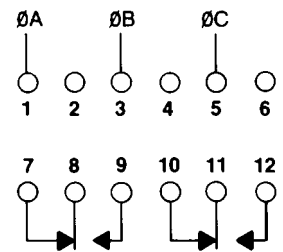
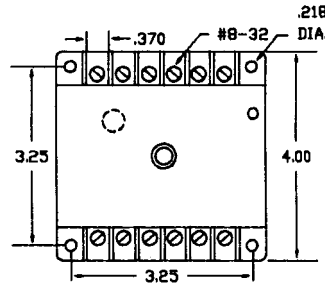
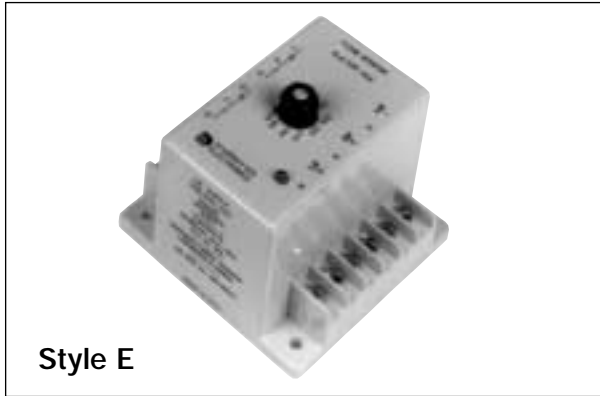


Figure 1

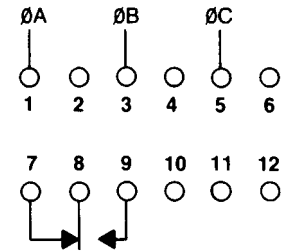
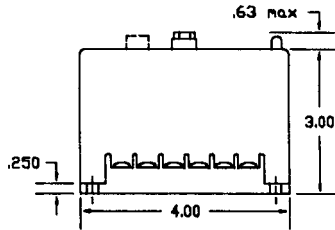


Figure 2



Style E

SPECIFICATIONS

- OPERATING VOLTAGE:** See Table Below
- PHASE SEQUENCE:** ABC (Will Not Operate CBA)
- POWER REQUIRED**
 - Models Up to 300 VAC: 3 VA, Maximum
 - Models Over 300 VAC: 7 VA, Maximum
 - Models Over 500 VAC: 3 VA, Maximum
- INDICATOR LED:** Glows When All Conditions Are Normal

Models Over 300 VAC

- Operate: 1.0 Second
- Release: 2.0 Seconds

U.S. PATENT NUMBER: 3,611,050

For UL Listed units, copper wire with 60°/75°C rating must be used for control circuitry connections.

RESPONSE TIMES

Models Up to 300 VAC

- Operate: 250 Milliseconds
- Release: 0.5 Seconds

MODEL NUMBER	OPERATING VOLTAGE	DROP-OUT VOLTAGE		RESET	STOCK	OUTPUT RATING
		1 Ø LOW	3 Ø LOW			
SLA-120-ALE	95-130 Adj.	79-108	85-117	Automatic	X	DPDT, 211 VA Inductive; 10 Amps Resistive @ 120 VAC. Figure 1
SLA-120-ALER				Manual	X	DPDT, 211 VA Inductive; 10 Amps Resistive @ 120 VAC. Figure 1
SLA-230-ALE	190-270 Adj.	158-224	171-243	Automatic	X	DPDT, 345 VA Inductive; 5 Amps Resistive @ 240 VAC. Figure 1
SLA-230-ALER				Manual	X	DPDT, 345 VA Inductive; 5 Amps Resistive @ 240 VAC. Figure 1
SLA-380-ALE	350-440 Adj.	290-365	315-396	Automatic	X	DPDT, 360 VA Inductive; 3 Amps Resistive @ 600 VAC. Figure 1
SLA-380-ALER				Manual	X	SPDT, 360 VA Inductive; 3 Amps Resistive @ 600 VAC. Figure 2
SLA-440-ALE	430-480 Adj.	357-398	387-432	Automatic	X	DPDT, 360 VA Inductive; 3 Amps Resistive @ 600 VAC. Figure 1
SLA-440-ALER				Manual	X	SPDT, 360 VA Inductive; 3 Amps Resistive @ 600 VAC. Figure 2
SLA-575-ALE	525-625 Adj.	436-519	473-563	Automatic	X	DPDT, 360 VA Inductive; 3 Amps Resistive @ 600 VAC. Figure 1

All models are UL Listed and CSA Certified.
All voltage referenced on this page are phase-to-phase.

Models also available with fixed operating voltages.
Consult factory.