

DATA LOGGERS

SIMPLE LOGGER® DATA LOGGERS

MODELS SL01 TO SL13

These small AC and DC simple loggers can be ready to go in minutes with just a few parameters to set up



Model SL01

Model SL10

Model SL11

Model SL12

Model SL13

SPECIFICATIONS

MODELS	SL01	SL10	SL11	SL12	SL13
VOLTAGE					
Range	0 to 5 V _{AC}	±100 mV _{DC}	±1 V _{DC}	±10 V _{DC}	±50 V _{DC}
Resolution	10 mV	0.1 mV	1 mV	10 mV	50 mV
Accuracy	±(0.5% of reading + 50 mV)*	±(0.5% of reading + 0.5 mV)*	±(0.5% of reading + 5 mV)*	±(0.5% of reading + 50 mV)*	±(0.5% of reading + 250 mV)*
Maximum Input Voltage	60 V _{DC}				
Input Impedance	800 KΩ				
Power Source	Internal: Two 1.5 V AA non-rechargeable batteries External: USB 2.0 (computer or other USB power source)				
Power Consumption	Internal power: 1 mA (average) External power: 100 mW				



FEATURES

- Simple 1 button operation
- Quick 2 wire input connection
- User configurable scaling, units of measure and recording length
- Stores up to 4 million measurements
- Data analysis software included
- Software provides real-time trend graph display, data download, analysis and report generation
- Micro-B USB cable included

The Simple Logger Control Panel allows you to configure how data measured by these instruments is recorded and displayed. The available settings depend on which model is connected to the computer. The following table shows which configuration options are available for each model.

FEATURE	SL01	SL10	SL11	SL12	SL13	SL20	SL30	SL31	SL40	SL50
Set up recording	✓	✓	✓	✓	✓	✓	✓	✓	✓	✓
Define units	✓	✓	✓	✓	✓	✓	✓	✓	✓	✓
Set instrument clock	✓	✓	✓	✓	✓	✓	✓	✓	✓	✓
Erase instrument memory	✓	✓	✓	✓	✓	✓	✓	✓	✓	✓
Scaling	✓	✓	✓	✓	✓	✓	✓			
Filtering	✓	✓	✓	✓	✓	✓			✓	✓
Thermocouple type										✓
Cold Junction Compensation										✓
Rising/Falling events								✓		

CATALOG NO.	DESCRIPTION
2156.01	Simple Logger Model SL01 (voltage, 5 VAC)
2156.10	Simple Logger Model SL10 (voltage, 100mVDC)
2156.11	Simple Logger Model SL11 (voltage, 1 VDC)
2156.12	Simple Logger Model SL12 (voltage, 10 VDC)
2156.13	Simple Logger Model SL13 (voltage, 50 VDC)



DATA LOGGERS

SIMPLE LOGGER® DATA LOGGERS

MODELS SL20 TO SL50

Models available for logging
DC Current, Temperature,
Pulse and Events



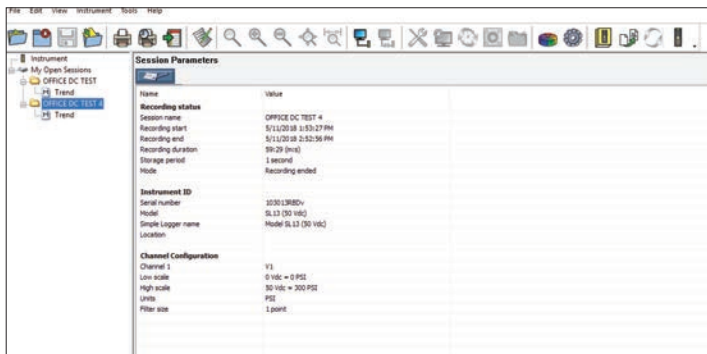
Model SL20 Model SL30 Model SL31 Model SL40 Model SL50



SPECIFICATIONS

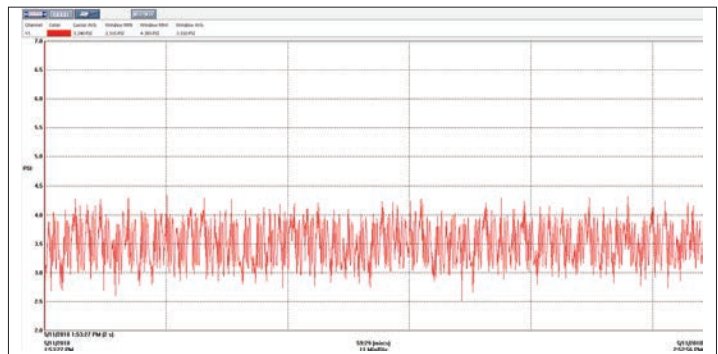
MODELS	SL20	SL30	SL31	SL40	SL50						
					Thermocouple Type:						
					J	K	N	T	E	R	S
	CURRENT	PULSE	EVENT		TEMPERATURE						
Range	±20 mA	Contact closure, 0 to 5 Vdc	Contact closure, 0 to 5 Vdc	-148 to 1022F (-70C to +550C)	-328 to 2192°F (-200 to 1200°C)	-328 to 2502°F (-200 to 1372°C)	-454 to 2372°F (-270 to 1300°C)	-418 to 752°F (-250 to 400°C)	-418 to 1832°F (-250 to 1000°C)	32 to 3200°F (0 to 1760°C)	
Resolution	0.02 mA	n/a		0.1°C	0.1°C						
Accuracy	±(0.5% of reading + 0.1 mA)*	n/a		±(1% of reading + 1.8°F [1°C])*	Below -148°F (-100°C): ±(0.4% of reading + 9°F [5°C])*					32 to 212°F (0° to +100°C): ±(0.3% of reading + 18°F [10°C])*	
					-148 to 212°F (-100° to 100°C): ±(0.3% of reading + 7.2°F [4°C])*					Above 212°F (100°C): ±(0.2% of reading + 5.4°F [3°C])*	
Maximum Input Voltage	3 Vdc	10 Vdc	n/a		1 V						
Input Impedance	49 Ω	800 KΩ	n/a		800 KΩ						
Power Source	Internal: Two 1.5 V AA non-rechargeable batteries External: USB 2.0 (computer or other power source, when powered by the USB the battery is automatically disconnected)										
Power Consumption	Internal power: 1 mA (average) External power: 100 mW										

SESSION PARAMETER



Shows the current configuration of the logger.

REAL-TIME TREND GRAPH



Typical real-time trend graph.

CATALOG NO.	DESCRIPTION
2156.20	Simple Logger Model SL20 (current, 4 to 20 mADC)
2156.30	Simple Logger Model SL30 (pulse)
2156.31	Simple Logger Model SL31 (event)
2156.40	Simple Logger Model SL40 (temperature, RTD/PT1000)
2156.50	Simple Logger Model SL50 (temperature, thermocouple)

