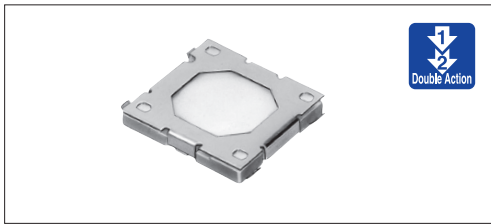


0.9mm low-profile, double action type.



Typical Specifications

Items	Specifications
Rating (max.)	50mA 12V DC
Rating (min.)	10 $\mu$ A 1V DC
Initial contact resistance	100m $\Omega$ max.
Travel (mm)	1st 0.25 All 0.4

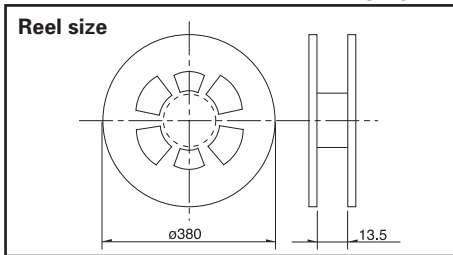
Product Line

Product No.	Operating force	Operating direction	Operating life (5mA 5V DC)	Guide bosses	Minimum order unit (pcs.)	
					Japan	Export
SKRNP AE010	1st 0.78N 2nd 2.45N	Toppush	30,000cycles	Without	5,000	5,000
SKRNP BE010				With		
SKRNP CE010	1st 0.78N 2nd 1.57N			Without		
SKRNP DE010				With		
SKRNP EE010	1st 0.59N 2nd 1.57N		100,000cycles	Without	5,000	5,000
SKRNP ME010				With		

Packing Specifications

Taping

Unit:mm

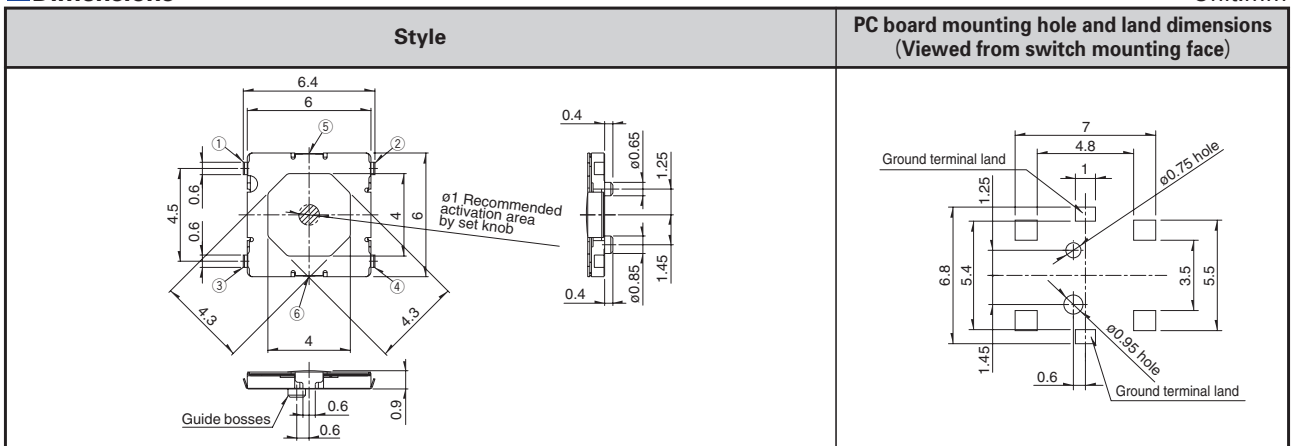


Number of packages (pcs.)			Tape width (mm)	Export package measurements (mm)
1 reel	1 case / Japan	1 case / export packing		
5,000	50,000	50,000	12	401 × 401 × 214

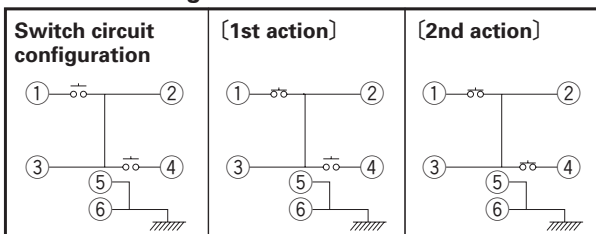
Note For reels of 330mm diameter, please inquire.

Dimensions

Unit:mm



Circuit Arrangement



Refer to P.288 for soldering conditions.

## List of Varieties

Type		Sharp Feeling Type											
		Surface Mount											
Series		SKRN	SKSE	SKSV	SKSW	SKSF	SKSM	SKSG	SKRK	SKRP	SKQM	SKQY	SKSU
Photo													
Features		Double action		Compact size Low-profile			Compact size Low-profile		High operation force Compact size	Compact size		Middle travel	
Water-proof		—	—	●	●	—	●	—	—	—	—	—	●
Dust-proof		—	—	●	●	○	●	—	—	—	—	○	●
Operating direction	Toppush	●	—	●	●	●	●	●	●	●	●	●	●
	Sidepush	—	●	—	—	—	—	—	—	—	—	—	—
Dimensions (mm)	W	□ 6	5.9	2.8	3.0	2.8	3.4	3	3.9	4.2	6	6.1	5.3
	D		2.87	1.9	2	2.4	2.9	2.7	2.9	3.2	3.5	3.7	5.4
	H	0.9	3	0.5	0.58	0.65	0.7	1.4	1.5	2.5	4.3	2.5	3.85
Operation force coverage	~1N												
	1N~2N	※	↕	↕	↕	↕	↕	↕	↕	↕	↕	↕	
	2N~3N												
	3N~4N												
4N~5N												↕	
Travel (mm)		※	0.12	0.13	0.1		0.12	0.13	0.2	0.25		0.7	
Ground terminal		●	●	—	—	—	—	●	—	—	—	●	—
Operating temperature range		-30°C to +85°C											
Automotive use		—	—	—	—	—	—	○	—	●	●	●	●
Life Cycle													
Rating (max.) (Resistive load)		50mA 12V DC							50mA 16V DC	50mA 12V DC		50mA 16V DC	
Rating (min.) (Resistive load)		10μA 1V DC											
Electrical performance	Insulation resistance	100MΩ min. 100V DC for 1min.											
	Voltage proof	250V AC for 1min.	100V AC for 1min.					250V AC for 1min.					
Durability	Vibration	10 to 55 to 10Hz/min., the amplitude is 1.5mm for all the frequencies, in the 3 direction of X, Y and Z for 2hours respectively											
	Lifetime	Shall be in accordance with individual specifications.											
Environmental performance	Cold	-30±2°C for 96h											
	Dry heat	80±2°C for 96h											
	Damp heat	60±2°C, 90 to 95%RH for 96h											
Page		255	256	257	258	259	260	261	262	263	264	265	266

W : Width. The most outer dimension excluding terminal portion.  
 D : Depth. The most outer dimension excluding terminal portion.  
 H : Height. The minimum dimension if there are variances.

- TACT Switch™ Soldering Conditions . . . . . 288
- TACT Switch™ Cautions . . . . . 289

### Notes

1. The automotive operating temperature range to be individually discussed upon request.
2. ● indicates applicability to all products in the series, while ○ indicates applicability to some products in the series.
3. ※ See the relevant pages for respective product descriptions

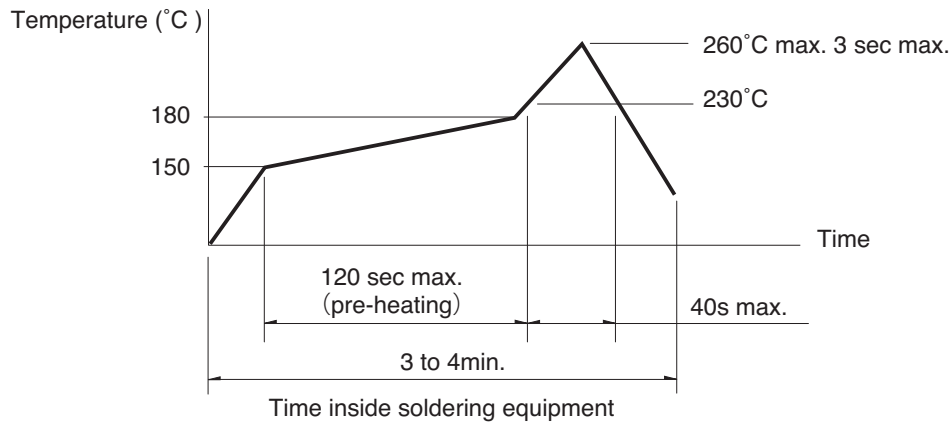
# TACT Switch™ Soldering Conditions

## Condition for Reflow

Available for Surface Mount Type.

1. Heating method: Double heating method with infrared heater.
2. Temperature measurement: Thermocouple 0.1 to 0.2 φ CA (K) or CC (T) at solder joints (copper foil surface).  
A heat resistive tape should be used to fix thermocouple.

3. Temperature profile



## Notes

1. The above temperature shall be measured of the top of switch. There are cases where the PC board's temperature greatly differs from that of the switch, depending on the material, size, thickness of PC boards and others. The above-stated conditions shall also apply to switch surface temperatures.
2. Soldering conditions differ depending on reflow soldering machines. Prior verification of soldering condition is highly recommended.

## Conditions for Auto-dip

Available for Snap-in Type and Radial Type

Items	Condition
<b>Flux built-up</b>	Mounting surface should not be exposed to flux
<b>Preheating temperature</b>	Ambient temperature of the soldered surface of PC board. 100°C max.
<b>Preheating time</b>	60s max.
<b>Soldering temperature</b>	260°C max.
<b>Duration of immersion</b>	5s max.
<b>Number of soldering</b>	2times max.

SKHH、SKPD Series

Items	Condition
<b>Flux built-up</b>	Mounting surface should not be exposed to flux
<b>Preheating temperature</b>	Ambient temperature of the soldered surface of PC board. 110°C max.
<b>Preheating time</b>	60s max.
<b>Soldering temperature</b>	260°C max.
<b>Duration of immersion</b>	5s max.
<b>Number of soldering</b>	2times max.

SKQJ、SKQK、SKEG Series

Items	Condition
<b>Flux built-up</b>	Mounting surface should not be exposed to flux
<b>Preheating temperature</b>	Ambient temperature of the soldered surface of PC board. 100°C max.
<b>Preheating time</b>	45s max.
<b>Soldering temperature</b>	255°C max.
<b>Duration of immersion</b>	5s max.
<b>Number of soldering</b>	2times max.

## Notes

1. Consult with us for availability of TACT Switch™ washing.
2. Prevent flux penetration from the top side of the TACT Switch™.
3. Switch terminals and a PC board should not be coated with flux prior to soldering.
4. The second soldering should be done after the switch is stable with normal temperature.
5. Use the flux with a specific gravity of min 0.81.  
(EC-19S-8 by TAMURA Corporation, or equivalents.)

## Manual Soldering (Except SKRT Series)

Items	Condition
<b>Soldering temperature</b>	350°C max.
<b>Duration of soldering</b>	3s max.
<b>Capacity of soldering iron</b>	60W max.

SKHH、SKHW、SKRG、SKPD Series

Items	Condition
<b>Soldering temperature</b>	360°C max.
<b>Duration of soldering</b>	3s max.
<b>Capacity of soldering iron</b>	60W max.

SKQJ、SKQK、SKEG Series

Items	Condition
<b>Soldering temperature</b>	350°C max.
<b>Duration of soldering</b>	3s max.
<b>Capacity of soldering iron</b>	20W max.

Detector  
Push  
Slide  
Rotary  
Encoders  
Power  
Dual-in-line  
Package Type

TACT Switch™

Sharp  
Feeling  
Soft  
Feeling  
Snap-in  
Type  
Surface  
Mount Type  
Radial  
Type