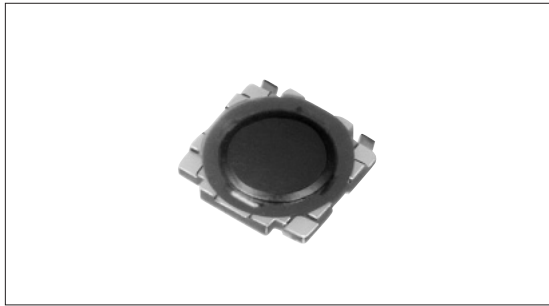


# TACT Switch™ 0.55mm Height Low-profile (Surface Mount Type)

SKRB Series



4.8×4.8mm with height of 0.55mm. Compact & low-profile.

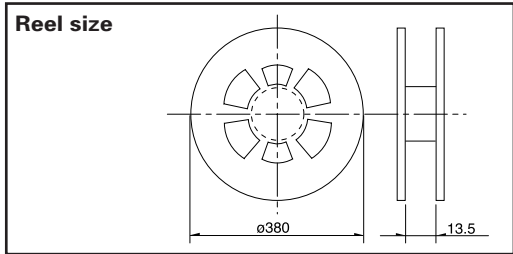


## Product Line

Product No.	Operating force	Operating direction	Travel (mm)	Rating (max.)	Rating (min.)	Operating life (5mA 5V DC)	Initial contact resistance	Minimum order unit (pcs.)
SKRBAGE010	1.1N	Vertical	0.15	50mA 12V DC	10μA 1V DC	2,000,000cycles	100mΩ max.	10,000
SKRBAAE010	1.57N		1,000,000cycles					
SKRBACE010	2.55N		500,000cycles					
SKRBAKE010	3.5N		200,000cycles					

## Packing Specifications

### Taping



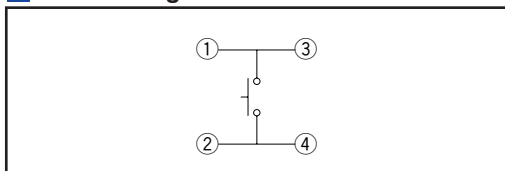
Number of packages (pcs.)			Tape width (mm)	Export package measurements (mm)
1 reel	1 case /Japan	1 case /export packing		
10,000	100,000	100,000	12	401×401×214

## Dimensions

Unit:mm

Style	PC board land dimensions (Viewed from switch mounting face)

## Circuit Diagram



## Notes

- Please place purchase orders per minimum order unit N (integer).
- For φ 330mm diameter reel requirements, please contact us.

Refer to P.328 for soldering conditions.

Detector

Push

Slide

Rotary

Encoders

Power

Dual-in-line  
Package Type

TACT Switch™

Custom-  
Products

Sharp  
Feeling

Soft  
Feeling

Snap-in  
Type

Surface  
Mount Type

Radial  
Type



Automotive  
Use

## List of Varieties

### Sharp Feeling Type

Series	SKQU	SKQB	SKQE	SKHC	SKRW	SKRM	SKQR	SKRB	SKRR	SKQG	SKSD
Detector											
Push											
Slide											
Rotary											
Encoders											
Power											
Dual-in-line Package Type											
TACT Switch™											
Custom-Products											
<b>Type</b>	Snap-in				Surface mount						
<b>Features</b>	4-direction switch+push switch	Water-proof Horizontal type	Long Life	—	Low-profile			Low-profile and long life	Low-profile	Double action	
<b>Operating direction</b>	<b>Vertical</b>	●	—	●	●	●	●	●	●	●	●
	<b>Horizontal</b>	—	●	—————							—
<b>Dimensions (mm)</b>	<b>W</b>	□10	11.5	□12	□3.7	□4.5	□4.8		7.5	□5.2	4.1
	<b>D</b>		11.9		0.35	0.4	0.5	0.55	0.6		0.8
	<b>H</b>	7.1	11.3	4.3	0.35	0.4	0.5	0.55	0.6	0.8	0.6
<b>Operation force coverage</b>	1N	See the relevant pages for respective product descriptions	●	↕	↕	↕	↕	↕	↕	↕	See the relevant pages for respective product descriptions
	5N		↕	↕	↕	↕	↕	↕	↕		
<b>Ground terminal</b>	—————										●
<b>Operating temperature range</b>	-30°C to +85°C										
<b>Electrical performance</b>	<b>Insulation resistance</b>	100MΩ min. 100V DC									
	<b>Voltage proof</b>	250V AC for 1min. SKRW/RM/RB/RR : 100V AC for 1min.									100V AC for 1min.
<b>Durability</b>	<b>Vibration</b>	10 to 55 to 10Hz/min., the amplitude is 1.5mm for all the frequencies, in the 3 direction of X, Y and Z for 2hours respectively									
	<b>Lifetime</b>	Shall be in accordance with individual specifications.									
<b>Environmental performance</b>	<b>Cold</b>	-30±2°C for 96h									
	<b>Dry heat</b>	80±2°C for 96h									
	<b>Damp heat</b>	60±2°C, 90 to 95%RH for 96h									
<b>Page</b>	493	288	290	291	293	294	295	296	297	298	300

W : Width. The most outer dimension excluding terminal portion.  
 D : Depth. The most outer dimension excluding terminal portion.  
 H : Height. The minimum dimension if there are variances.

- TACT Switch™ Soldering Conditions .....328
- TACT Switch™ Cautions .....329
- Product Line of Knob for TACT Switch™ .....330

#### Note

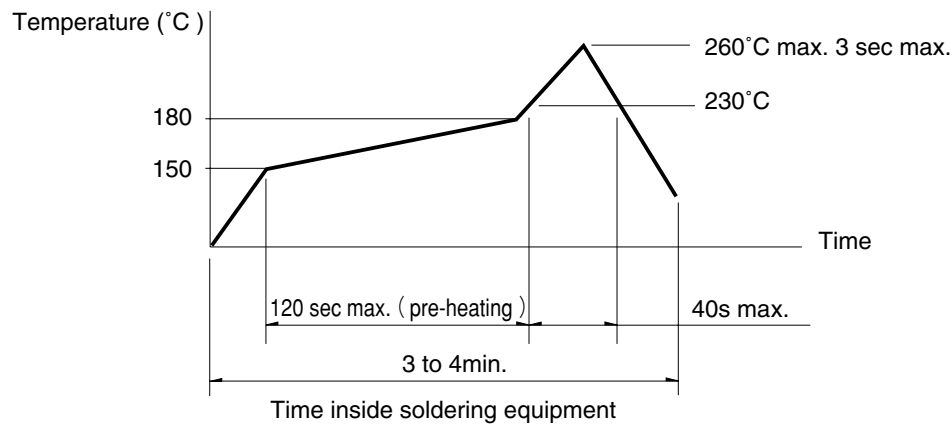
The automotive operating temperature range to be individually discussed upon request.

## Soldering Conditions

### Condition for Reflow

Available for Surface Mount Type.

1. Heating method: Double heating method with infrared heater.
2. Temperature measurement: Thermocouple 0.1 to 0.2  $\phi$  CA (K) or CC (T) at solder joints (copper foil surface). A heat resistive tape should be used to fix thermocouple.
3. Temperature profile



### Notes

1. The above temperature shall be measured of the top of switch. There are cases where the PC board's temperature greatly differs from that of the switch, depending on the material, size, thickness of PC boards and others. The above-stated conditions shall also apply to switch surface temperatures.
2. Soldering conditions differ depending on reflow soldering machines. Prior verification of soldering condition is highly recommended.

### Conditions for Auto-dip

Available for Snap-in Type and Radial Type  
(Except SKHJ, SKHL, SKQJ, SKQK, SKEG series)

Items	Condition
Flux built-up	Mounting surface should not be exposed to flux
Preheating temperature	Ambient temperature of the soldered surface of PC board. 100°C max.
Preheating time	60s max.
Soldering temperature	260°C max.
Duration of immersion	5s max.
Number of soldering	2times max.

### Notes

1. Consult with us for availability of TACT Switch™ washing.
2. Prevent flux penetration from the top side of the TACT Switch™.
3. Switch terminals and a PC board should not be coated with flux prior to soldering.
4. The second soldering should be done after the switch is stable with normal temperature.
5. Use the flux with a specific gravity of min 0.81.  
(EC-19S-8 by TAMURA Corporation, or equivalents.)

### Manual Soldering (Except SKRT Series)

Items	Condition
Soldering temperature	350°C max.
Duration of soldering	3s max.
Capacity of soldering iron	60W max.

Detector

Push

Slide

Rotary

Encoders

Power

Dual-in-line  
Package Type

TACT Switch™

Custom-  
ProductsSharp  
FeelingSoft  
FeelingSnap-in  
TypeSurface  
Mount TypeRadial  
Type