

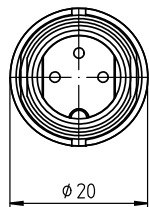
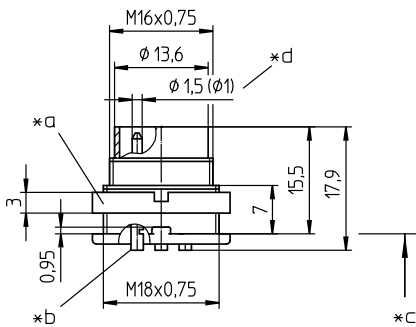
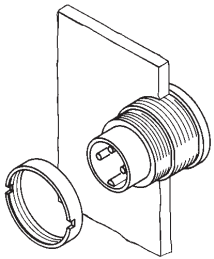
03 SGV

Circular connectors with threaded joint M16 acc. to IEC 61076-2-106, IP40/IP67/IP68

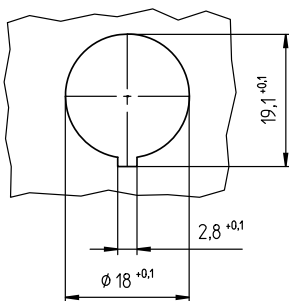


Chassis plug acc. to IEC 61076-2-106, IP40, with threaded joint and solder terminals, for back side mounting

03 **SGV**



*e



Environmental conditions

Temperature range -40 °C/+85 °C

Materials

Insulating body PA GF, V-0 according to UL94
 Contact pin CuZn, silver-plated and flash gold-plated (3-8 poles)
 CuZn, pre-nickel and gold-plated (12 poles)
 Housing Zn diecast, pre-copper and nickel-plated
 Ring screw CuZn, nickel-plated

Mechanical data

Tightening torque connector 1-3 Nm
 Tightening torque nut 1-3 Nm
 Protection class IP40¹

¹ according to IEC DIN EN 60529, only in locked condition with an appropriate counterpart

Connectable conductors for solder area

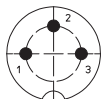
Section $\leq 0.75 \text{ mm}^2$ (AWG 20) (3-8 poles)
 $\leq 0.25 \text{ mm}^2$ (AWG 24) (12 poles)

Electrical data (at $T_{\text{amb}} 20 \text{ °C}$)

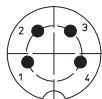
Rated current 5 A ($T_{\text{amb}} 40 \text{ °C}$, 3-8 poles)
 3 A ($T_{\text{amb}} 40 \text{ °C}$, 12 poles)
 Rated voltage with pollution degree 1:
 300 V (versions 30, 40, 50/6, 60, 70)
 100 V (versions 50, 71, 80, 81)
 160 V (Polbild 120)
 with pollution degree 2:
 250 V (versions 30, 40)
 32 V (versions 50, 71, 80, 81)
 160 V (versions 50/6, 60, 70, 120)
 Rated impulse voltage 1500 V (versions 30, 40, 50/6, 60, 70, 120)
 500 V (versions 50, 71, 80, 81)
 Material group II (IEC)/I (UL) ($400 \leq \text{CTI} < 600$)
 Overvoltage category I
 Insulation resistance $> 100 \text{ M}\Omega$

03 **SGV**

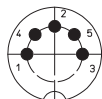
Pin configurations, solder side view



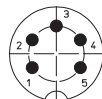
03-a
SGV 30



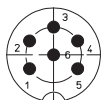
04-a
SGV 40



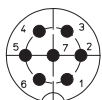
05-b
SGV 50



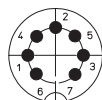
05-a
SGV 50/6



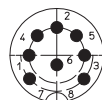
06-a
SGV 60



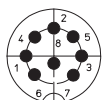
07-a
SGV 70



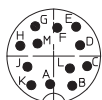
07-b
SGV 71



SGV 80



08-a
SGV 81



12-a
SGV 120

Associated products

Counterparts

KV KV ...-8 WKV

Accessories

0383 038399 0384

038899

- *a nut enclosed separately
- *b cup-shaped solder terminal
- *c mounting direction
- *d 12 pole version Ø1.0 mm
- *e port in mounting plate

03 **SGV**

Designation	Pole Number	PU (Pieces)	MDQ (Pieces)
SGV 30	3	50	100
SGV 40	4	50	100
SGV 50	5	50	100
SGV 50/6	5	50	100
SGV 60	6	50	100
SGV 70	7	50	100
SGV 71	7	50	100
SGV 80	8	50	100
SGV 81	8	50	100
SGV 120	12	50	100

Packaging:
in a cardboard box