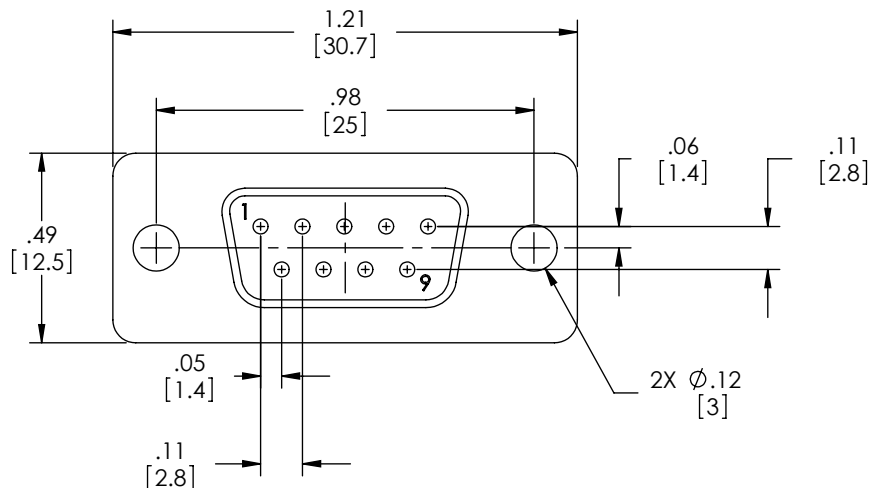
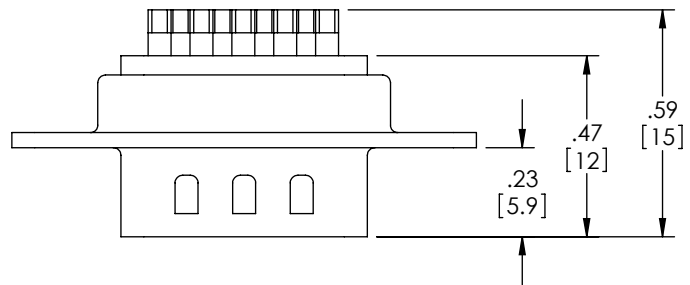


THE INFORMATION CONTAINED IN THIS DRAWING IS THE SOLE PROPERTY OF L-COM, INC. ANY REPRODUCTION IN PART OR WHOLE WITHOUT THE WRITTEN PERMISSION OF L-COM, INC. IS PROHIBITED.

REVISIONS			
REV	DESCRIPTION	DATE	APPROVED
E	ECN 4944: ADDED FRONT & BACK SHELL FINISH, ADDED PKG NOTE, DEL CURRENT RATING	8/3/10	D. CASTRO
-	-	-	-
-	-	-	-
-	-	-	-



**NOTES:**

**MATERIAL:**

CONNECTOR SHELL: STEEL  
 CONNECTOR INSULATOR: THERMOPLASTIC, UL94V-0 RATED  
 CONTACTS: COPPER ALLOY

**FINISH:**

FRONT SHELL: NICKEL PLATED  
 BACK SHELL: TIN PLATED  
 CONTACTS: GOLD FLASH IN CONTACT AREA OVER NICKEL PLATE  
 SOLDER CUPS: TIN PLATED

**ELECTRICAL:**

DIELECTRIC WITHSTANDING VOLTAGE: 1000 VAC rms  
 INSULATION RESISTANCE: 5000MΩ @ 500VDC

**MISCELLANEOUS:**

OPERATING TEMPERATURE: -55°C TO +105°C  
 CONNECTOR SHALL BE PACKAGED IN ACCORDANCE WITH L-COM SPEC PS-0031.

CATALOG #	PACKAGING
SD9P	1/BAG
SD9P-TRAY	50/TRAY

UNLESS OTHERWISE SPECIFIED, DIMENSIONS ARE IN INCHES [mm] OVERALL CABLE LENGTH TOLERANCE: ≤12 [305] = +1 [25] / -0 >12 [305] ≤60 [1524] = +2 [51] / -0 >60 [1524] ≤120 [3048] = +4 [102] / -0 >120 [3048] ≤300 [7620] = +6 [152] / -0 >300 [7620] = +3% / -0% ALL OTHER DIMENSIONAL TOLERANCES: .X = ±.2 .XX = ±.02 .XXX = ±.005	APPROVALS	DATE		45 BEECHWOOD DRIVE NORTH ANDOVER, MA 01845
	DRAWN BY B.MAZEJKA	11/10/2003		
	CHECKED BY C.McCORMICK	12/08/2003	DSUB	
	APPROVED BY D.PARHAM	12/08/2003	PRODUCT DESCRIPTION	
	CONFIGURATION DETAILS OF UNDIMENSIONED FEATURES MAY VARY		DB9M SOLDER CUP CONNECTOR	
PROJECTION	COLOR VARIATIONS MAY OCCUR	SIZE <b>A</b>	FSCM NO. <b>43321</b>	DWG. NO. <b>SD9P</b>
	1AC08-016	SCALE: NONE	CAD FILE: SD9P.SLDDRW	REV. <b>E</b>
				SHEET 1 OF 1