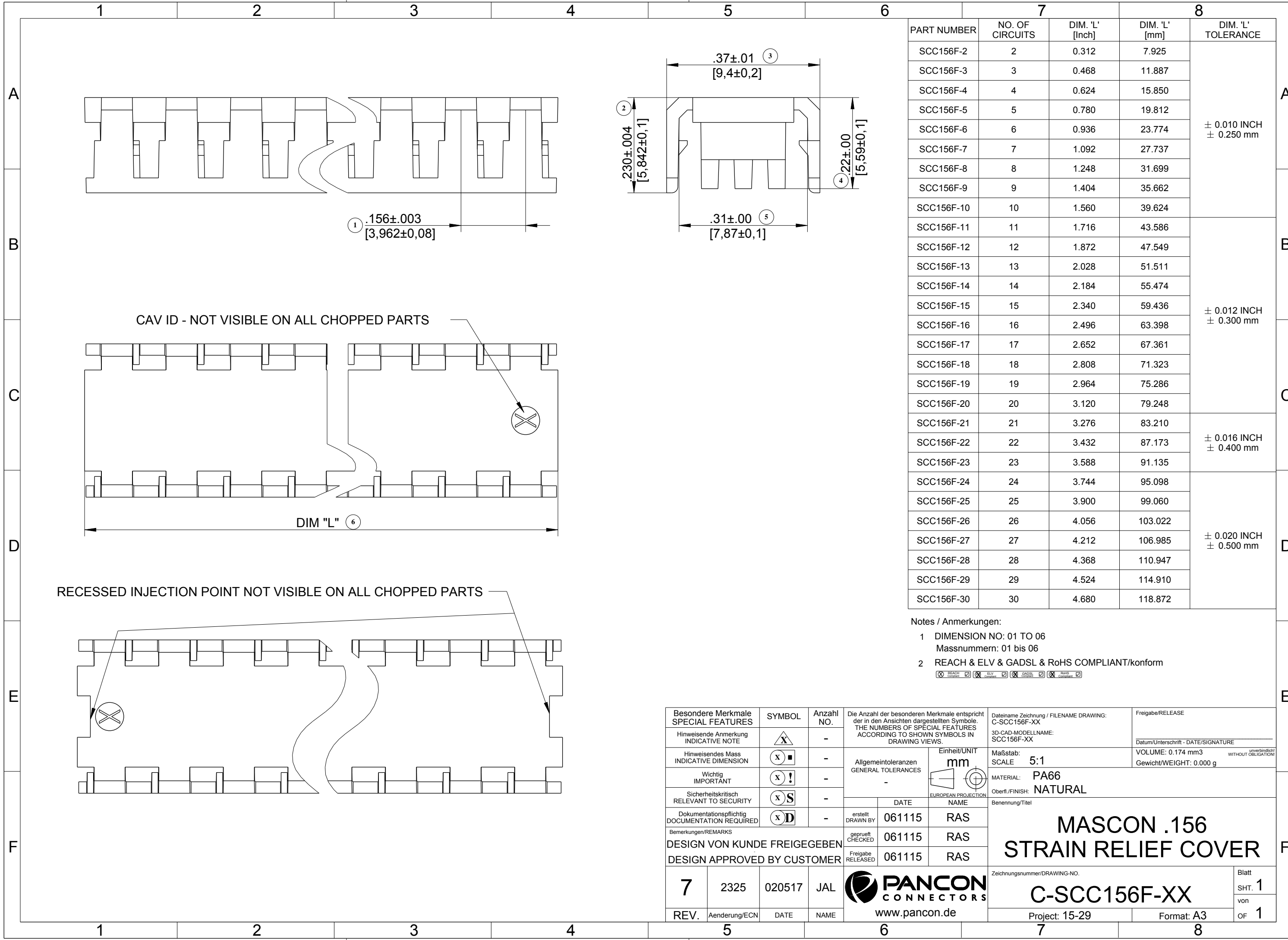


The reproduction, transmission or use of this document or its contents is not permitted without express written authority. Offenders will be liable for damages. All rights, including rights created by patent grant or registration of an utility model or design, are reserved.

Weitergabe sowie Vervielfältigung dieser Unterlage, Verwertung und Mitteilung ihres Inhalts nicht gestattet, soweit nicht ausdrücklich zugestanden. Zuwiderhandlungen verpflichten zu Schadensersatz. Alle Rechte vorbehalten, insbesondere fuer den Fall der Patenterteilung oder GM-Eintragung.



PART NUMBER	NO. OF CIRCUITS	DIM. 'L' [Inch]	DIM. 'L' [mm]	DIM. 'L' TOLERANCE
SCC156F-2	2	0.312	7.925	± 0.010 INCH ± 0.250 mm
SCC156F-3	3	0.468	11.887	
SCC156F-4	4	0.624	15.850	
SCC156F-5	5	0.780	19.812	
SCC156F-6	6	0.936	23.774	
SCC156F-7	7	1.092	27.737	
SCC156F-8	8	1.248	31.699	
SCC156F-9	9	1.404	35.662	
SCC156F-10	10	1.560	39.624	
SCC156F-11	11	1.716	43.586	
SCC156F-12	12	1.872	47.549	± 0.012 INCH ± 0.300 mm
SCC156F-13	13	2.028	51.511	
SCC156F-14	14	2.184	55.474	
SCC156F-15	15	2.340	59.436	
SCC156F-16	16	2.496	63.398	
SCC156F-17	17	2.652	67.361	± 0.016 INCH ± 0.400 mm
SCC156F-18	18	2.808	71.323	
SCC156F-19	19	2.964	75.286	
SCC156F-20	20	3.120	79.248	
SCC156F-21	21	3.276	83.210	
SCC156F-22	22	3.432	87.173	± 0.020 INCH ± 0.500 mm
SCC156F-23	23	3.588	91.135	
SCC156F-24	24	3.744	95.098	
SCC156F-25	25	3.900	99.060	
SCC156F-26	26	4.056	103.022	
SCC156F-27	27	4.212	106.985	
SCC156F-28	28	4.368	110.947	
SCC156F-29	29	4.524	114.910	
SCC156F-30	30	4.680	118.872	

- Notes / Anmerkungen:
- DIMENSION NO: 01 TO 06
Massnummern: 01 bis 06
 - REACH & ELV & GADSL & RoHS COMPLIANT/konform

Besondere Merkmale SPECIAL FEATURES		SYMBOL	Anzahl NO.	Die Anzahl der besonderen Merkmale entspricht der in den Ansichten dargestellten Symbole. THE NUMBERS OF SPECIAL FEATURES ACCORDING TO SHOW SYMBOLS IN DRAWING VIEWS.		Dateiname Zeichnung / FILENAME DRAWING: C-SCC156F-XX		Freigabe/RELEASE	
Hinweisende Anmerkung INDICATIVE NOTE			-	Allgemeintoleranzen GENERAL TOLERANCES -		Einheit/UNIT mm		Datum/Unterschrift - DATE/SIGNATURE	
Hinweisendes Mass INDICATIVE DIMENSION			-			Maßstab: SCALE 5:1		VOLUME: 0.174 mm3 Gewicht/WEIGHT: 0.000 g	
Wichtig IMPORTANT			-	erstellt DRAWN BY 061115		EUROPEAN PROJECTION		MATERIAL: PA66	
Sicherheitskritisch RELEVANT TO SECURITY			-			DATE 061115		NAME RAS	
Dokumentationspflichtig DOCUMENTATION REQUIRED			-	geprüft CHECKED 061115		Benennung/Titel		<h1>MASCON .156 STRAIN RELIEF COVER</h1>	
Bemerkungen/REMARKS		DESIGN VON KUNDE FREIGEgeben DESIGN APPROVED BY CUSTOMER		Freigabe RELEASED 061115		RAS			
7	2325	020517	JAL	 www.pancon.de		<h2>C-SCC156F-XX</h2>		Blatt SHT. 1 von 1	
REV.	Aenderung/ECN	DATE	NAME					Project: 15-29	