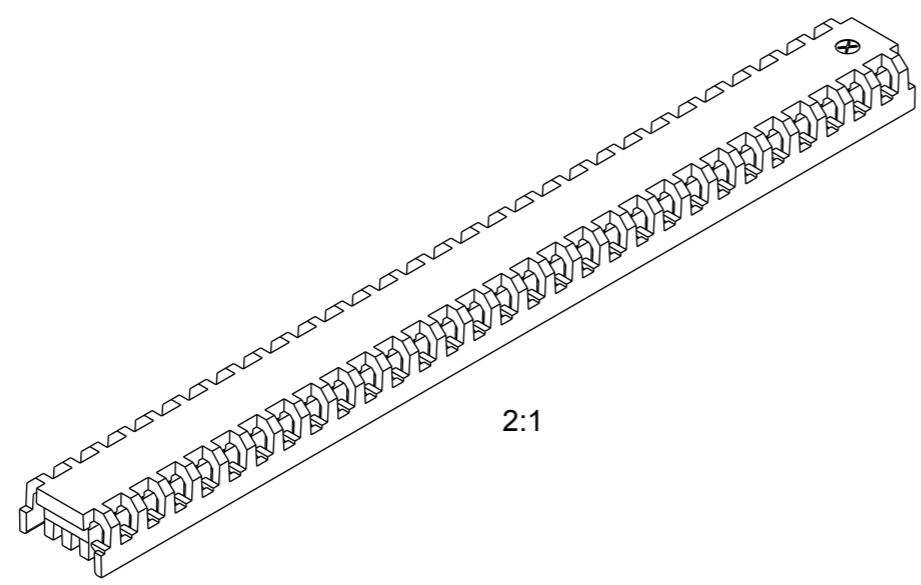
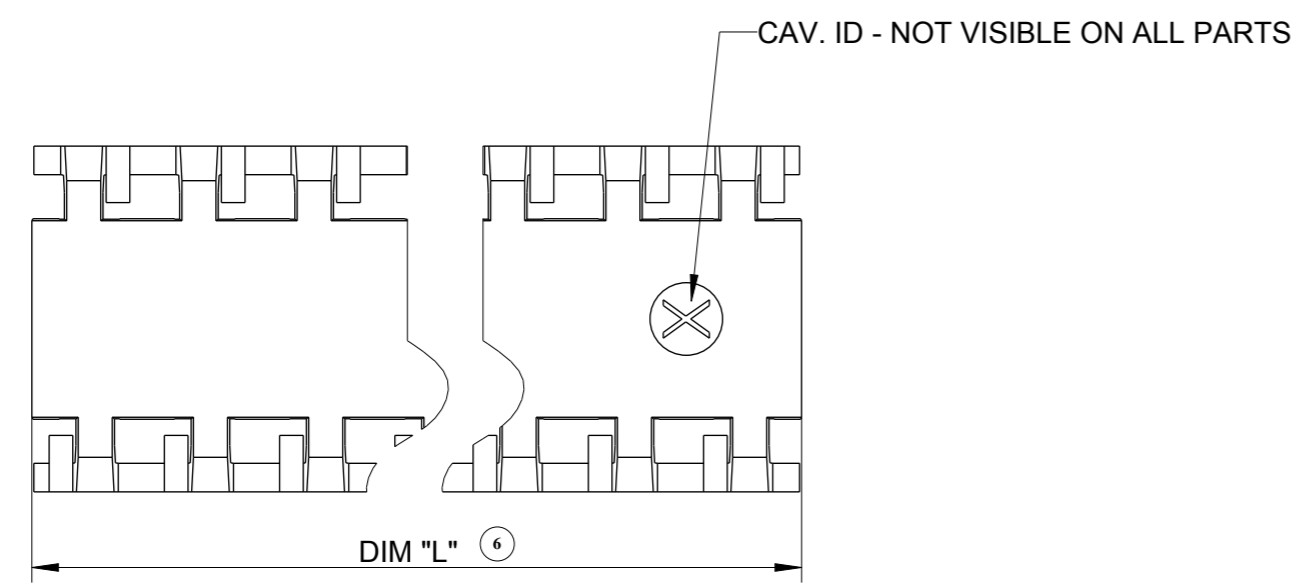
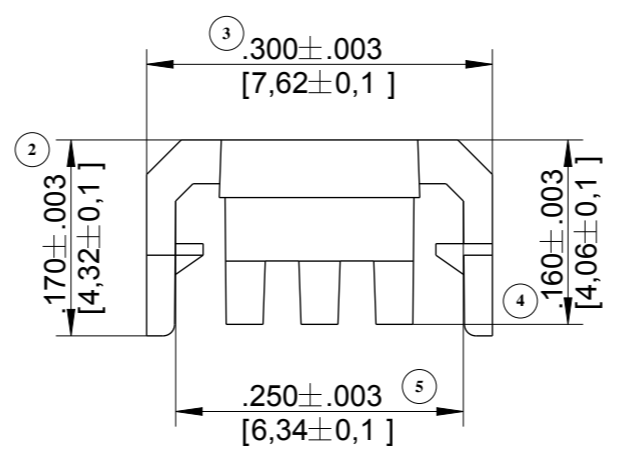
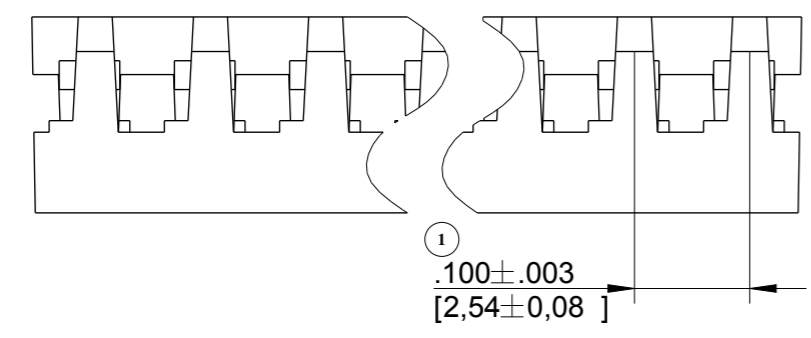


The reproduction, transmission or use of this document or its contents is not permitted without express written authority. Offenders will be liable for damages. All rights, including rights created by patent grant or registration of an utility model or design, are reserved.

Weitergabe sowie Vervielfältigung dieser Unterlage, Verwertung und Mitteilung ihres Inhalts nicht gestattet, soweit nicht ausdrücklich zugestanden. Zuwiderhandlungen verpflichten zu Schadensersatz. Alle Rechte vorbehalten, insbesondere fuer den Fall der Patenterteilung oder GM-Eintragung.



PANCON PN	No. OF CIRCUITS	DIM "L" (INCH)	DIM "L" (mm)	TOLERANCE OF "L"
SCC100F-02	2	0.200	5.080	±0.012 INCH ± 0.300 mm
SCC100F-03	3	0.300	7.620	
SCC100F-04	4	0.400	10.160	
SCC100F-05	5	0.500	12.700	
SCC100F-06	6	0.600	15.240	
SCC100F-07	7	0.700	17.780	
SCC100F-08	8	0.800	20.320	
SCC100F-09	9	0.900	22.860	
SCC100F-10	10	1.000	25.400	
SCC100F-11	11	1.100	27.940	
SCC100F-12	12	1.200	30.480	
SCC100F-13	13	1.300	33.020	
SCC100F-14	14	1.400	35.560	
SCC100F-15	15	1.500	38.100	
SCC100F-16	16	1.600	40.640	
SCC100F-17	17	1.700	43.180	
SCC100F-18	18	1.800	45.720	
SCC100F-19	19	1.900	48.260	
SCC100F-20	20	2.000	50.800	
SCC100F-21	21	2.100	53.340	
SCC100F-22	22	2.200	55.880	
SCC100F-23	23	2.300	58.420	
SCC100F-24	24	2.400	60.960	
SCC100F-25	25	2.500	63.500	
SCC100F-26	26	2.600	66.040	
SCC100F-27	27	2.700	68.580	
SCC100F-28	28	2.800	71.120	
SCC100F-29	29	2.900	73.660	
SCC100F-30	30	3.000	76.200	

Notes / Anmerkungen:
 1 DIMENSION NO: 01 TO 06
 Massnummern: 01 bis 06
 2 REACH & ELV & GADSL & RoHS COMPLIANT/konform
 REACH ELV GADSL RoHS

Besondere Merkmale SPECIAL FEATURES		SYMBOL	Anzahl NO.	Die Anzahl der besonderen Merkmale entspricht der in den Ansichten dargestellten Symbole. THE NUMBERS OF SPECIAL FEATURES ACCORDING TO SHOWN SYMBOLS IN DRAWING VIEWS.	Dateiname Zeichnung / FILENAME DRAWING: C-SCC100F-XX	Freigabe/RELEASE
Hinweisende Anmerkung INDICATIVE NOTE			-		3D-CAD-MODELLNAME: SCC100F-XX	Datum/Unterschrift - DATE/SIGNATURE
Hinweisendes Mass INDICATIVE DIMENSION			-	Allgemeintoleranzen GENERAL TOLERANCES	Einheit/UNIT INCH[mm]	Maßstab: SCALE 6:1
Wichtig IMPORTANT			-		EUROPEAN PROJECTION	MATERIAL: PA66 Oberfl./FINISH: NATURAL
Sicherheitskritisch RELEVANT TO SECURITY			-		DATE NAME	Benennung/Titel
Dokumentationspflichtig DOCUMENTATION REQUIRED			-	erstellt DRAWN BY	061115 RAS	MASCON .100 STRAIN RELIEF COVER
Bemerkungen/REMARKS				geprüft CHECKED	061115 RAS	
DESIGN VON KUNDE FREIGEgeben DESIGN APPROVED BY CUSTOMER				Freigabe RELEASED	061115 RAS	
7	2273	110716	JAL	 www.pancon.de		Zeichnungsnummer/DRAWING-NO. C-SCC100F-XX
REV.	Aenderung/ECN	DATE	NAME			Blatt SHT. 1 von 1 OF 1