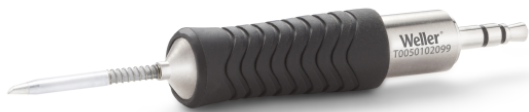


RTP 012 B MS

Product no.: T0050102099



Benefits

- › Short tip-to-grip distance: Close working distance to the component for higher precision and maximum control
- › MIL-SPC / IPC standard (potential free): Reduces risk of damage to sensitive micro components and workpieces. No rework, lower total cost of ownership
- › Active tip technology: Fastest heat-up and recovery time, sensor close to the solder tip, excellent heat transfer. No downtime, continuing workflow, excellent results
- › Digital tool for data storage: Motion activated usage sensor for energy control and data storage
- › Patented tip & grip design: Only soldering tip on the market which can be changed without a tool. 20% faster change than leading competitors.
- › One intelligent platform: One station for all active tips & tools. WX platform meets all operational hand soldering needs.

**Technical Data**

| | |
|---------------------|-----------|
| Tip shape | Bevel Cut |
| Tip type | MS |
| Width in mm | 1.2 |
| Width in inches | 0.047 |
| Thickness in mm | --- |
| Thickness in inches | --- |
| Length mm | 16.3 |
| Length inches | 0.642 |
| Power | 40 W |
| Packaging unit | 1 |