

# RKC2 Series Microminiature SMT Top Actuated Tact Switch

**NEW**



## Features/Benefits

- 1.7 mm height, 3.5 x 2.7 mm size
- SMT termination
- Hard actuator
- 180, 250, 350 & 500 gf actuation forces
- 100k to 200k cycles

## Typical Applications

- Automotive keyfob
- High-end consumer
- Health & medical devices

Tactile Switches

B

## Specifications

FUNCTION: momentary action  
 CONTACT ARRANGEMENT: 1 make contact = SPST N.O.  
 TERMINALS: SMT termination  
 TRAVEL: 0.15 ± 0.1 mm

## Mechanical

Product Description	Life Cycles
RKC2SJM170SMTR LFS	200,000
RKC2SJK170SMTR LFS	200,000
RKC2SJR170SMTR LFS	200,000
RKC2SJF170SMTR LFS	100,000

## Electrical

MAXIMUM VOLTAGE: 12 VDC  
 MAXIMUM CURRENT DC: 20 mA  
 CONTACT RESISTANCE: 100 mΩ  
 INSULATION RESISTANCE: 100 MΩ min.  
 DIELECTRIC STRENGTH: 250 VA C (1 minute)  
 BOUNCE TIME: ≤ 10 ms

## Environmental

OPERATING TEMPERATURE: -40°C to 85°C

## Process

SOLDERING: This component is suited to the following methods:  
 Infrared Reflow Soldering in accordance with IEC61760-1

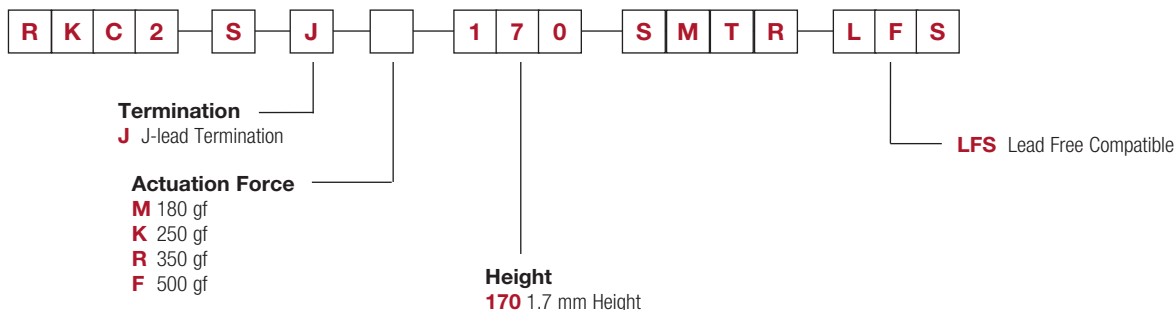
## Packaging

4,000 pieces per reel

## How To Order

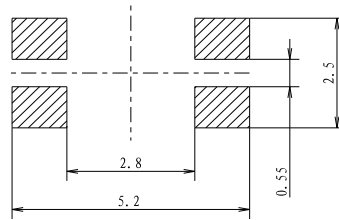
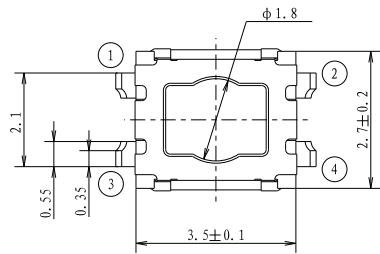
Our easy build-a-switch concept allows you to mix and match options to create the switch you need. To order, select desired option from each category and place it in the appropriate box.

For any part number different from those listed below, please consult your local representative.

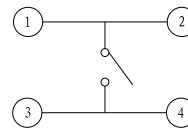
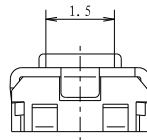
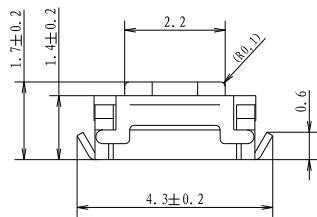


# RKC2 Series Microminiature SMT Top Actuated Tact Switch

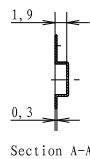
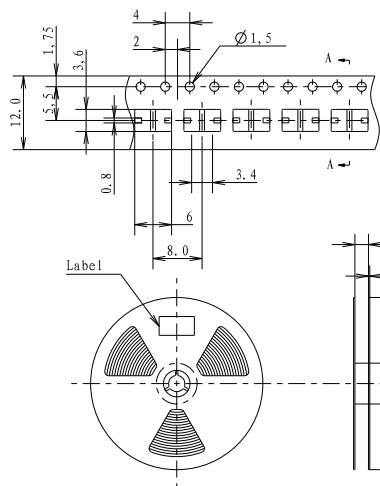
**NEW**



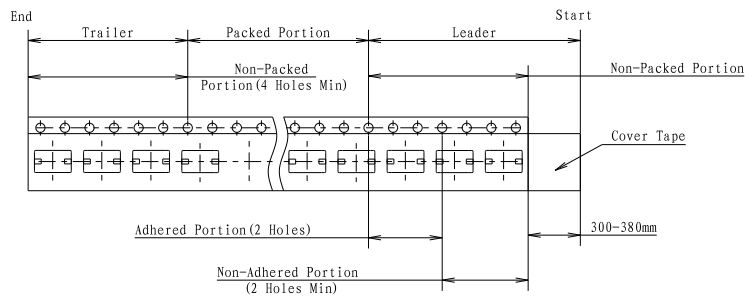
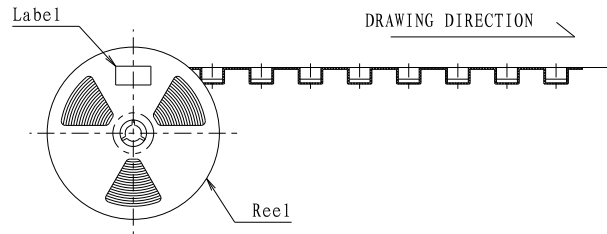
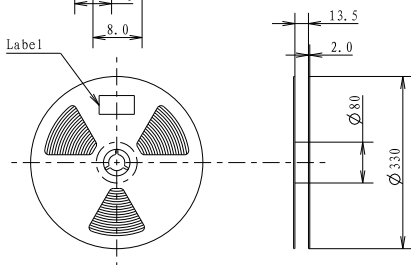
P. C. B LAND DIMENSION



CIRCUIT DIAGRAM

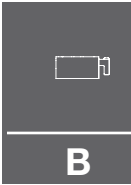


Section A-A



**NOTE**

1. 4K pcs SWITCHES PER 1 REEL
2. GENERAL TOLERANCE : 0.3mm



**B**

**Tactile Switches**