

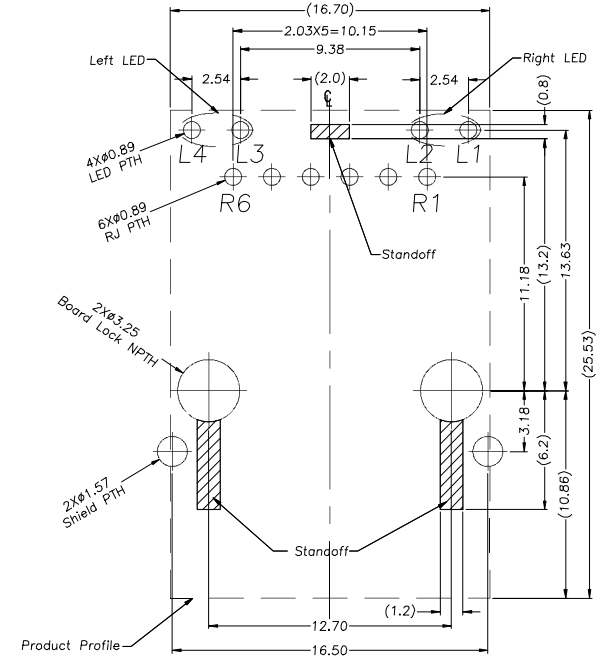
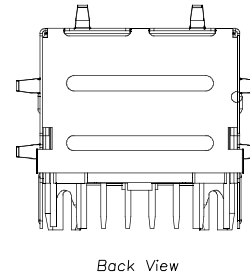
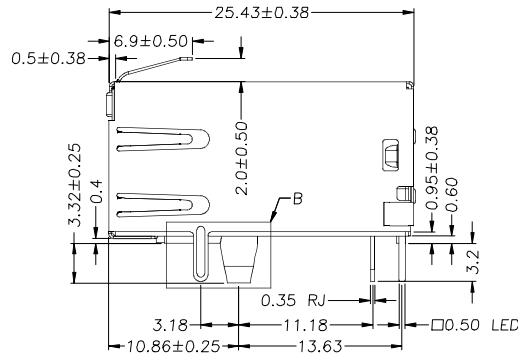
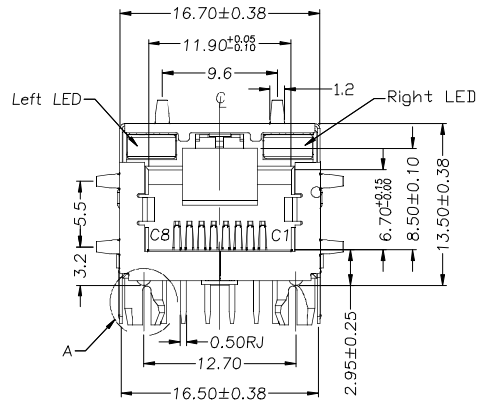
This document is the property of Amphenol Corporation and is delivered on the express condition that it is not to be disclosed, reproduced or used, in whole or in part, for manufacture or sale by anyone other than Amphenol Corporation without its prior consent, and that no right is granted to disclose or to use any information in this document.

The marking on this product doesn't contain environmental hazardous materials per Material Specification SS-00259 for Sony GP compliant or per directive 2011/65/EU for RoHS compliant.

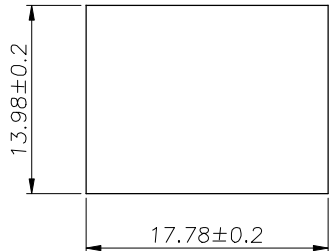
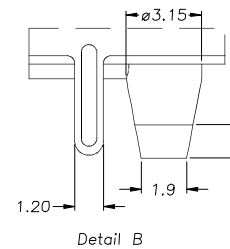
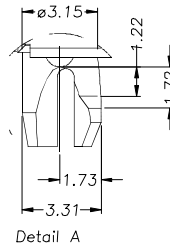
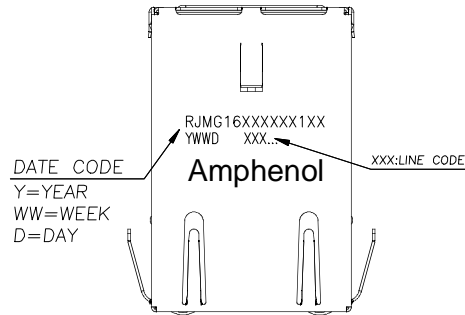
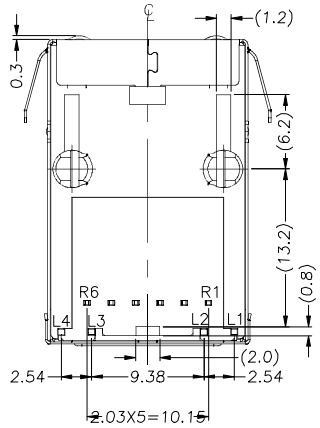
MFG CODE: _____

CUSTOMER DRAWING
PRELIMINARY RELEASE
SUBJECT TO CHANGE

REVISIONS				
SYM	ECN No.	DESCRIPTION	DATE	APPROVED
C	NE-13016	ADD THE SCHEMATIC FOR ALL OPTIONS	01/24/2013	Roger Tsai
D	NE-14155	ADD LED OPTIONS	01/29/2015	Roger Tsai
EX1	/	UPDATE LED OPTIONS D/C CODE	09/29/2017	Lawrence Chan
EX2	/	ADD Packaging	07/06/2018	Lawrence Chan



RECOMMENDED PCB LAYOUT
 (ALL TOLERANCES ARE ±0.05)



RECOMMENDED PANEL CUTOUT



TOLERANCE	APPROVALS	DATE	TITLE		PART No.				
X. ±0.35	DRAWN Arvin Ye	07/06/2018	SINGLE PORT RJmag CONNECTOR SHIELD, WITH R&C TERMINATION		RJM16XXXXX1XX				
X.X ±0.25					CHECKED Vivian Wen	07/06/2018	RJM16XXXXX1XX		
X.XX ±0.15	APPROVED Lawrence Chan	07/06/2018	10/100				UNIT	SIZE	SHEET
ANGULAR ±1°	DWG TYPE CUST DWG	PROJECT CODE GT278	mm	A3	1 OF 6	EX2			
UNLESS OTHERWISE SPECIFIED			NA						

This document is the property of Amphenol Corporation and is delivered on the express condition that it is not to be disclosed, reproduced or used, in whole or in part, for manufacture or sale by anyone other than Amphenol Corporation without its prior consent, and that no right is granted to disclose or to use any information in this document.

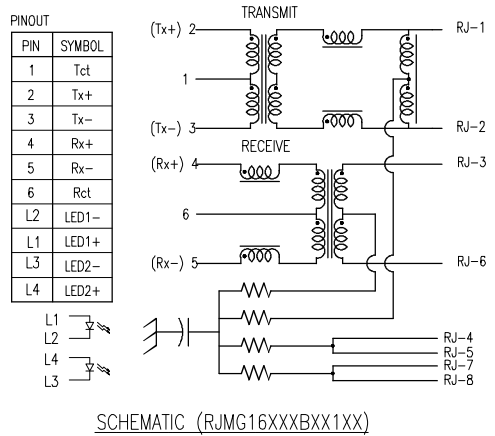
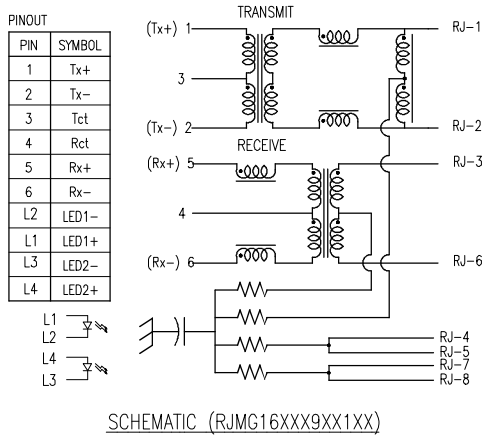
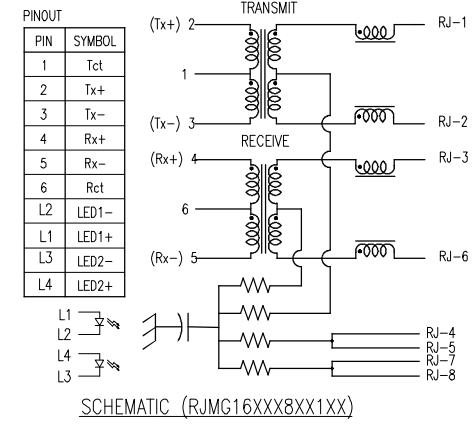
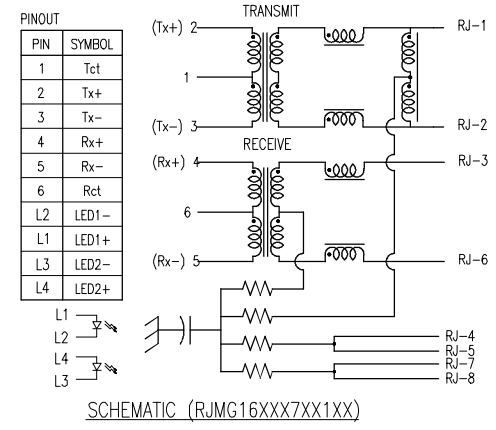
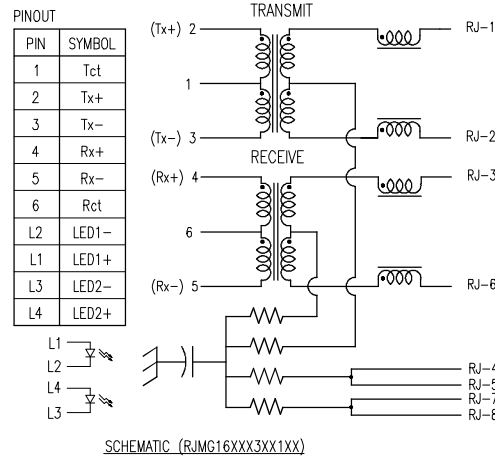
The marking on this product doesn't contain environmental hazardous materials. Material Specification SS-00259 for Sony GP compliant or per direct. RoHS compliant.

MFG CODE: _____

PRELIMINARY RELEASE
SUBJECT TO CHANGE

CUSTOMER DRAWING

REVISIONS				
SYM	ECN No.	DESCRIPTION	DATE	APPROVED
C	NE-13016	ADD THE SCHEMATIC FOR ALL OPTIONS	01/24/2013	Roger Tsai
D	NE-14155	ADD LED OPTIONS	01/29/2015	Roger Tsai
EX1	/	UPDATE LED OPTIONS D/C CODE	09/29/2017	Lawrence Chan
EX2	/	ADD Packaging	07/06/2018	Lawrence Chan



RJMG16 X X X X X X 1 X X

SHIELD OPTIONS

3: STANDARD SHIELD WITH SIDE TABS

LED1 (RIGHT SIDE)

0: W/O LED
1: GREEN
2: YELLOW
4: GREEN/YELLOW
6: GREEN/ORANGE

LED2 (LEFT SIDE)

SEE LED1

TERMINATION OPTIONS

3: SEE THE SCHEMATIC IN PAGE 2.
7: SEE THE SCHEMATIC IN PAGE 2.
8: SEE THE SCHEMATIC IN PAGE 2.
9: SEE THE SCHEMATIC IN PAGE 2.
B: SEE THE SCHEMATIC IN PAGE 2.

COMPLIANCE CODE

BLANCK: NONE-ROHS
R: RoHS Compliant

PLATING THICKNESS ON MATING CONTACTS AND SHIELD SPEC

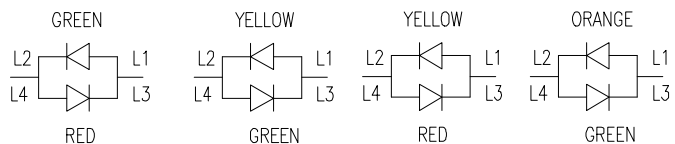
L: Gold Flash, STAINLESS STEEL T=0.2MM.
M: Gold 15u in, STAINLESS STEEL T=0.2MM.
N: Gold 30u in, STAINLESS STEEL T=0.2MM.

TIA WIRING

0: STANDARD

URNS RATIO (TRANSMIT)

1: 1:1



TOLERANCE	APPROVALS	DATE	TITLE		Amphenol®			
X. ±0.35 X.X ±0.25 X.XXX ±0.15	DRAWN Arvin Ye	07/06/2018	SINGLE PORT RJmag CONNECTOR SHIELD, WITH R&C TERMINATION 10/100		Amphenol Corporation Amphenol Taiwan Corporation			
ANGULAR ±1°	CHECKED Vivian Wen	07/06/2018	UNIT mm SCALE NA		SIZE A3	PART No. RJMG16XXXXXX1XX		
UNLESS OTHERWISE SPECIFIED	APPROVED Lawrence Chan	07/06/2018	DWG TYPE CUST DWG PROJECT CODE GT278		SHEET 2 OF 6	DWG No. RJMG16XXXXXX1XX		REV. EX2

This document is the property of Amphenol Corporation and is delivered on the express condition that it is not to be disclosed, reproduced or used, in whole or in part, for manufacture or sale by anyone other than Amphenol Corporation without its prior consent, and that no right is granted to disclose or to use any information in this document.

The marking on this product doesn't contain environmental hazardous materials per Material Specification SS-00259 for Sony GP compliant or per directive 2011/65/EU for RoHS compliant.

MFG CODE: _____

PRELIMINARY RELEASE
SUBJECT TO CHANGE

CUSTOMER DRAWING

REVISIONS				
SYM	ECN No.	DESCRIPTION	DATE	APPROVED
C	NE-13016	ADD THE SCHEMATIC FOR ALL OPTIONS	01/24/2013	Roger Tsai
D	NE-14155	ADD LED OPTIONS	01/29/2015	Roger Tsai
EX1	/	UPDATE LED OPTIONS D/C CODE	09/29/2017	Lawrence Chan
EX2	/	ADD Packaging	07/06/2018	Lawrence Chan

TURN RATIO 1:1±5%

PARAMETER	TYPE	LIMITS (MAX. OR MIN.)	FREQUENCY RANGE/ TEST CONDITIONS
INSERTION LOSS (RX/TX)	-0.8dB TYP.	-1.0dB MAX.	1-100 MHz
RETURN LOSS (RX/TX)	-22dB TYP. -18dB TYP. -12dB TYP.	-18dB MIN. -18+20log(f/30)dB MIN. -12dB MIN.	1-30 MHz 30-60 MHz 60-80 MHz
DC RESISTANCE	0.5 ohm MIN.	1.0 ohm MAX full 0.5 ohm MAX half	DC
CM-CM REJECTION	-40dB TYP.	-30dB MIN.	0-100MHz
CM-DM REJECTION	-40dB TYP.	-35dB MIN.	0-100MHz
CROSSTALK (PAIR TO PAIR)	-38dB TYP.	-35dB MIN.	0-100MHz
HIPOT (ISOLATION)	2.25KV/1.5KVrms.	2.25KV/1.5KVrms.	60S DC/AC
OCL	500uH TYP.	350uH MIN.	100KHz 8mV DC BIAS

LED PERFORMANCE:

PARAMETER	SINGLE COLOUR		BICOLOUR		UNITS
	GREEN	YELLOW	GREEN	ORANGE	
FORWARD CURRENT IF MAX	30	30	30		mA
REVERSE CURRENT IR MAX	10	10	10		uA
REVERSE VOLTAGE VR MAX	-5	-5	-5		V
T OPERATURE TOP	-40~+85	-40~+85	-40~+85		℃
T SOLDERING TURE TS	260+/-5	260+/-5	260+/-5		℃
POWER DISS. Pd	100	100	100		mW
PEAK WAVELENGTH	565	585	565	605	nM
FORWARD VOLTAGE TYP	2.5	2.1	2.2	2.0	V
FORWARD VOLTAGE MAX	2.9	2.6	2.6	2.6	V



MATERIALS:

INSULATOR: THERMOPLASTIC POLYESTER, NYLON
 COLOR: BLACK
 FLAMMABILITY RATING UL 94V-0

CONTACTS (RJ MAG): PHOSPHOR BRONZE
 PLATING: SELECTIVE GOLD OVER MATING SURFACES.
 100 MICRONS TIN PLATING ON TAILS.

SHIELD: STAINLESS STEEL T=0.2MM .

DIMENSIONS MARKED WITH "*" SHALL BE MEASURED.

MECHANICAL FEATURES:

SOLDERABILITY: MIL-STD-202, METHOD 208.

MATING/UNMATING FORCE:
 RJ PORT :MATING/UNMATING 2.1Kg MAX
 RETENTION FORCE FOR RJ PORT: 5Kg FOR 1 MINUTE
 MEET FCC PART 68.500 REQUIREMENTS.

Environmental

OPERATING TEMPERATURE: 0°C TO +70°C.
 STORAGE TEMPERATURE: -40°C TO +85°C.
 SOLDERING TEMPERATURE: 260°C FOR 10 SECONDS
 ALTITUDE OPERATING RANGE: SEA LEVEL TO 3000m
 Humidity: per MIL-STD-1344A, method 1002.1, test condition B
 Thermal Shock: per MIL-STD-1344A, method 1003.1, test condition A
 Vibration: per MIL-STD-1344A, method 2005.1, test condition J
 Mechanical Shock: per MIL-STD-1344A, method 2004.1, test condition C
 Salt Spray: 24 hours per MIL-STD-1344A, method 1001.1, test condition B

TOLERANCE	APPROVALS	DATE	TITLE		Amphenol®			
X. ±0.35 X.X ±0.25 X.XX ±0.15 X.XXX ±0.15	DRAWN Arvin Ye	07/06/2018	SINGLE PORT RJmag CONNECTOR SHIELD, WITH R&C TERMINATION		Amphenol Corporation Amphenol Taiwan Corporation			
ANGULAR ±1°	CHECKED Vivian Wen	07/06/2018	10/100		UNIT mm	SIZE A3	PART No. RJMG16XXXXXX1XX	
UNLESS OTHERWISE SPECIFIED	APPROVED Lawrence Chan	07/06/2018			SCALE NA	SHEET 3 OF 6	DWG No. RJMG16XXXXXX1XX	REV. EX2
	DWG TYPE CUST DWG	PROJECT CODE GT278						

This document is the property of Amphenol Corporation and is delivered on the express condition that it is not to be disclosed, reproduced or used, in whole or in part, for manufacture or sale by anyone other than Amphenol Corporation without its prior consent, and that no right is granted to disclose or to use any information in this document.

The marking on this product doesn't contain environmental hazardous materials per Material Specification SS-00259 for Sony GP compliant or per directive 2011/65/EU for RoHS compliant.

MFG CODE:

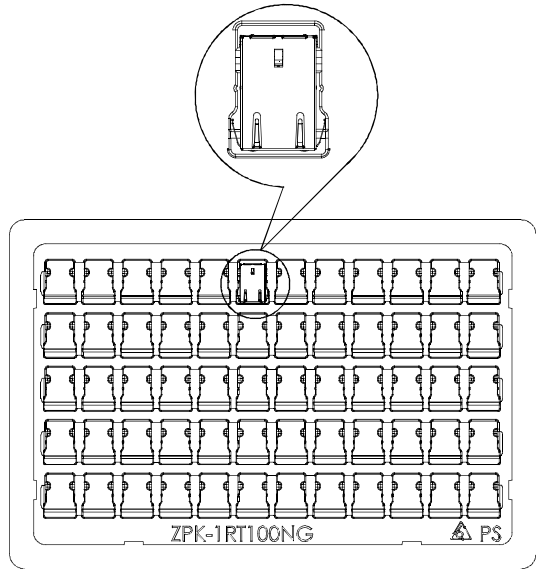
CUSTOMER DRAWING

**PRELIMINARY RELEASE
SUBJECT TO CHANGE**

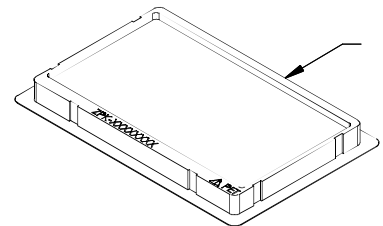
REVISIONS				
SYM	ECN No.	DESCRIPTION	DATE	APPROVED
C	NE-13016	ADD THE SCHEMATIC FOR ALL OPTIONS	01/24/2013	Roger Tsai
D	NE-14155	ADD LED OPTIONS	01/29/2015	Roger Tsai
EX1	/	UPDATE LED OPTIONS D/C CODE	09/29/2017	Lawrence Chan
EX2	/	ADD Packaging	07/06/2018	Lawrence Chan

1-1.POSITIONED COMPONENTS INTO MATCHING CAVITY OF TRAY, WITH LOGO ON TOP.(FIGURE 1)
1-2.60 PCS/PER TRAY; ENSURE COMPONENTS POSITIONED AS REQUIREMENT.

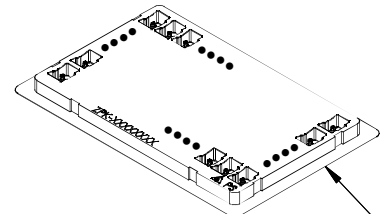
2-1.PLACE UPPER COVER AFTER BOTTOM TRAY IS PROPERLY LOADED OF COMPLETED PRODUCTS.(FIGURE 2?)
STAPLE 4 SIDES OF PACKING TRAY OR TACK TAPE. STACK UP 7 STAPLED PACKING TRAYS OF TOTAL 420 PCS.(FIGURE 4)
2-2.EACH TRAY MUST ADD A COVER BEFORE STACK UP W/ OTHER COMPLETED PACKING TRAY. AND ORIENTATION OF PLACEMENT MUST MATCH PRODUCT SHAPE.



(FIGURE 1)

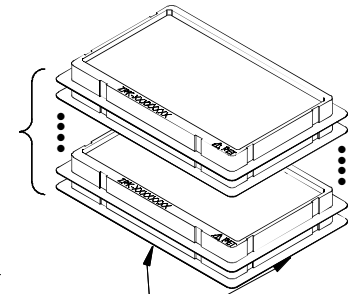


(FIGURE 2)



(FIGURE 3)

(7 TRAYS)
(TOTAL 420 PCS)



(FIGURE 4)

(STAPLE 4 SIDES OF PACKING TRAY OR TACK TAPE, PLEASE REFER TO LABEL STANDARD)



TOLERANCE	APPROVALS	DATE	TITLE		Amphenol®			
X. ±0.35	DRAWN Arvin Ye	07/06/2018	SINGLE PORT RJmag CONNECTOR SHIELD, WITH R&C TERMINATION 10/100		Amphenol Corporation Amphenol Taiwan Corporation			
X.X ±0.25	CHECKED Vivian Wen	07/06/2018						
X.XXX ±0.15	APPROVED Lawrence Chan	07/06/2018						
ANGULAR ±1°	DWG TYPE CUST DWG	PROJECT CODE GT278	UNIT mm	SIZE A3	PART No. RJMG16XXXXXX1XX		REV. EX2	
UNLESS OTHERWISE SPECIFIED			SCALE NA	SHEET 4 OF 6	DWG No. RJMG16XXXXXX1XX			

This document is the property of Amphenol Corporation and is delivered on the express condition that it is not to be disclosed, reproduced or used, in whole or in part, for manufacture or sale by anyone other than Amphenol Corporation without its prior consent, and that no right is granted to disclose or to use any information in this document.

The marking on this product doesn't contain environmental hazardous materials per Material Specification SS-00259 for Sony GP compliant or per directive 2011/65/EU RoHS compliant.

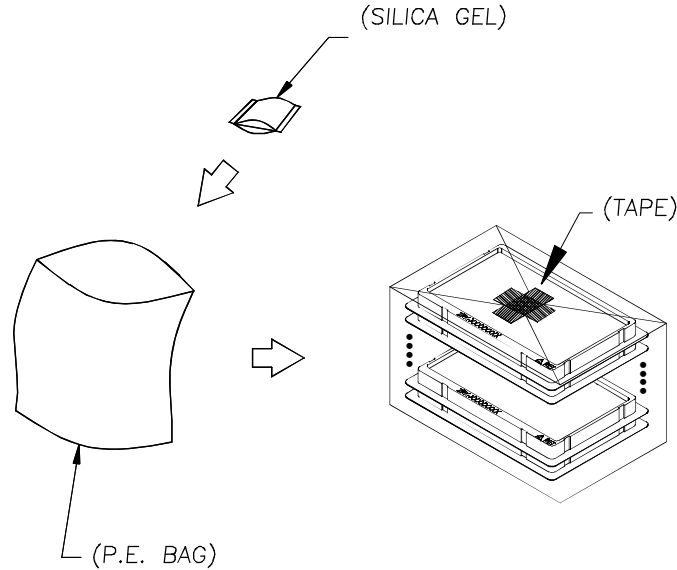
MFG CODE:

CUSTOMER DRAWING

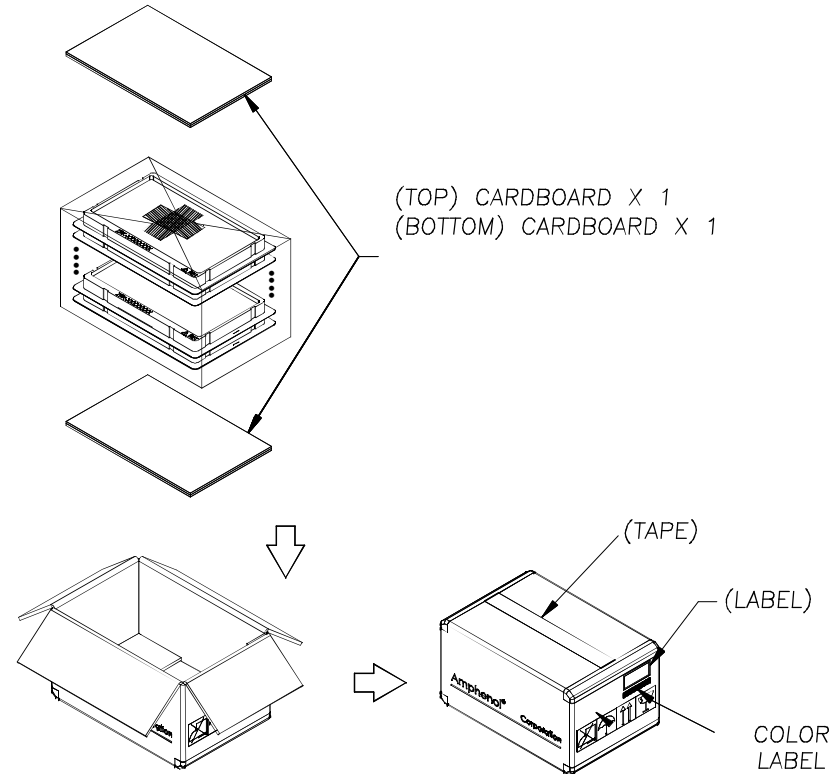
**PRELIMINARY RELEASE
SUBJECT TO CHANGE**

REVISIONS				
SYM	ECN No.	DESCRIPTION	DATE	APPROVED
C	NE-13016	ADD THE SCHEMATIC FOR ALL OPTIONS	01/24/2013	Roger Tsai
D	NE-14155	ADD LED OPTIONS	01/29/2015	Roger Tsai
EX1	/	UPDATE LED OPTIONS D/C CODE	09/29/2017	Lawrence Chan
EX2	/	ADD Packaging	07/06/2018	Lawrence Chan

- 3-1. AFTER STEP 2, PLACE 7 STACKED UP TRAYS INTO A P.E. BAG AND ADD A BAG OF SILICA GEL.
3-2. PROPERLY FOLDS THE P.E. BAG, AND FIX W/ TAPE.



- 4-1. PLACE A PCS CARDBOARD AT BOTTOM OF INNER BOX BEFORE THE COMPLETED P.E. BAG FROM 3-2.
4-2. PLACE 1 CORNER PIECES OF PCS AT 4 CORNERS AND 1 PCS CARDBOARD ON THE TOP.
4-3. TAPE THE INNER BOX AND APPLY PROPER LABELS.



TOLERANCE	APPROVALS	DATE	TITLE		Amphenol®				
X. ±0.35	DRAWN Arvin Ye	07/06/2018	SINGLE PORT RJmag CONNECTOR SHIELD, WITH R&C TERMINATION 10/100		Amphenol Corporation Amphenol Taiwan Corporation				
X.X ±0.25	CHECKED Vivian Wen	07/06/2018							
X.XXX ±0.15	APPROVED Lawrence Chan	07/06/2018							
ANGULAR ±1°	DWG TYPE CUST DWG	PROJECT CODE GT278		UNIT mm	SIZE A3	PART No.	RJMG16XXXXXX1XX	REV.	EX2
UNLESS OTHERWISE SPECIFIED				SCALE NA	SHEET 5 OF 6	DWG No.	RJMG16XXXXXX1XX		

This document is the property of Amphenol Corporation and is delivered on the express condition that it is not to be disclosed, reproduced or used, in whole or in part, for manufacture or sale by anyone other than Amphenol Corporation without its prior consent, and that no right is granted to disclose or to use any information in this document.

The marking on this product doesn't contain environmental hazardous materials per Material Specification SS-00259 for Sony GP compliant or per directive 2011/65/EU for RoHS compliant.

MFG CODE:

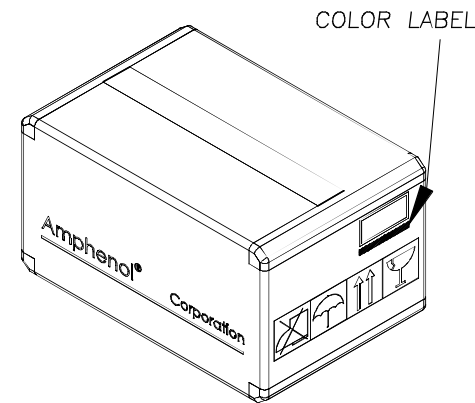
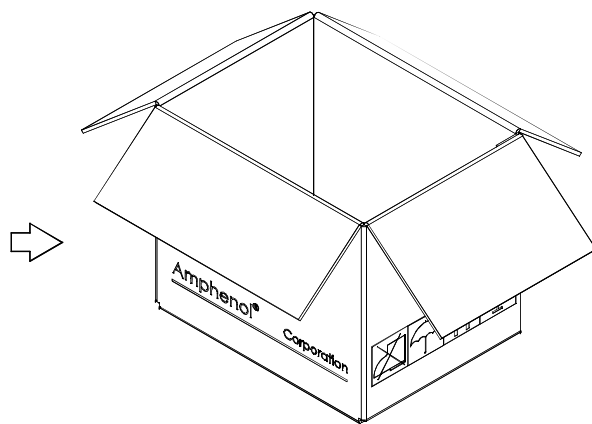
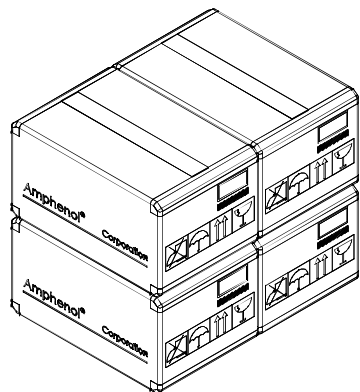
CUSTOMER DRAWING

**PRELIMINARY RELEASE
SUBJECT TO CHANGE**

REVISIONS				
SYM	ECN No.	DESCRIPTION	DATE	APPROVED
C	NE-13016	ADD THE SCHEMATIC FOR ALL OPTIONS	01/24/2013	Roger Tsai
D	NE-14155	ADD LED OPTIONS	01/29/2015	Roger Tsai
EX1	/	UPDATE LED OPTIONS D/C CODE	09/29/2017	Lawrence Chan
EX2	/	ADD Packaging	07/06/2018	Lawrence Chan

- 5-1. MAKE 4 COMPLETED INNER BOXES AS A SET IN AN OUTER BOX.
5-2. TAPE THE OUTER BOX AND APPLY LABELS OF P/N, QUANTITY, AND PACKING DATE.

6. PLEASE REFER TO ISD-ISPZPK6 AND LABEL STANDARD FOR OTHER RELATED ITEMS.



DIMENSION OF OUTER BOX
=L: 525mm, W: 400mm, H: 447mm

DIMENSION OF INNER BOX
=L: 375mm, W: 250mm, H: 205mm



PRODUCT		TRAY PER PRIMARY CARTON	PCS PER TRAY	PCS PER PRIMARY CARTON	PCS PER MASTER CARTON
P/N	PORTS				
RJMG16XXXXXX1XX	RJ45 1X1	7	60	420	1680

TOLERANCE	APPROVALS	DATE	TITLE		Amphenol®	
X. ±0.35	DRAWN Arvin Ye	07/06/2018	SINGLE PORT RJmag CONNECTOR SHIELD, WITH R&C TERMINATION 10/100		Amphenol Corporation Amphenol Taiwan Corporation	
X.X ±0.25	CHECKED Vivian Wen	07/06/2018				
X.XX ±0.15	APPROVED Lawrence Chan	07/06/2018				
ANGULAR ±1°	DWG TYPE CUST DWG	PROJECT CODE GT278	UNIT mm	SIZE A3	PART No. RJMG16XXXXXX1XX	
UNLESS OTHERWISE SPECIFIED			SCALE NA	SHEET 6 OF 6	DWG No. RJMG16XXXXXX1XX REV. EX2	