



Search by part # or keyword

[Products](#)

[Industries & Solutions](#)

[Resources](#)

[TE Store](#)

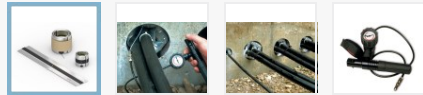
[Sign In](#)



[Power Systems](#) > [Power Cable Accessories](#) > [Duct Seals](#)

# 938709-000

RDSS-75(S10)



Raychem | Raychem RDSS

TE Internal #: **938709-000**

TE Internal Description: **RDSS-75(S10)**

Alias #: **1197272-3, RDSS-75(S10)**

Product Availability : **AMERICAS, ANZPAC, ASIA, EMEA**

Product Type : **Duct Sealing System**

Admissible Cable Dia. at Duct Inside Dia. (mm):

**0-28 at 55.0 mm, 0-30 at 60.0 mm, 0-40 at 65.0 mm, 0-46 at 70.0 mm, 0-56 at 75.0 mm**

Ducting Systems : **Concrete, Plastic, Steel**

Installation Condition : **Dry, Wet**

[Similar Products](#) | [Digital Datasheet](#)

[Compatible Parts & Tooling](#)

**We are here to help!**

Get in touch with our product experts.



[CHAT WITH US](#)



[EMAIL US](#)



[CALL US](#)

Feedback

[Documents](#)

[Features](#)

[Product Compliance](#)

Datasheets & Catalog Pages

TE CONNECTIVITYs (TE) RAYCHEM RDSS

[GER\\_CS\\_EPP-0569\\_1804.pdf](#) German

[ENG\\_CS\\_EPP-0569-EN\\_1304\\_EPP\\_0569\\_EN.pdf](#)

English

RAYCHEM RAYFLATE DUCT SEALING SYSTEM RDSS

[GER\\_CS\\_EPP-0569-DE\\_1306\\_EPP\\_0569-DE.pdf](#)

German

[GER\\_CS\\_EPP-1110-DE\\_1307\\_EPP\\_1110\\_DE.pdf](#)

German

RAYCHEM RAYFLATE ADAPTER RDSS-AD-210

[ENG\\_CS\\_EPP-1110-EN\\_1304\\_EPP\\_1110\\_EN.pdf](#)

English

RAYCHEM Duct Sealing System (RDSS)

[GER\\_DS\\_EPP-0569-DE\\_1306.pdf](#) German

Please review product documents or [contact us](#) for the latest agency approval information.

Product Type Features

Product Type : **Duct Sealing System**

## Body Features

Number of Cables Sealed (with 1 RDSS-Clip) : **Up to 4**  
Sealing Clip : **RDSS-CLIP-75**  
Number of Cables Sealed (with 2 RDSS-Clips) : **Up to 7**  
Material :  
**Inflatable bladder of flexible aluminum-polyethylene laminate**

## Dimensions

Admissible Cable Dia. at Duct Inside Dia. (mm):  
**0-28 at 55.0 mm, 0-30 at 60.0 mm, 0-40 at 65.0 mm, 0-46 at 70.0 mm, 0-56 at 75.0 mm**

## Usage Conditions

Installation Condition : **Dry, Wet**

## Operation/Application

Ducting Systems : **Concrete, Plastic, Steel**

## Product Availability

Product Availability : **AMERICAS, ANZPAC, ASIA, EMEA**

## Packaging Features

Packaging Quantity (Piece) : **10**

## Other

Product Use : **Power Cable to provide watertight seal**  
Sealing Mastic : **Yes**  
Independent of Duct Ovality : **Yes**

## EU RoHS Directive 2011/65/EU

*This declaration covers EU Directive 2011/65/EU incl. Delegated Directive 2015/863/EU. The restrictions under 2015/863/EU apply as of 22 July 2021 for EEE categories 8 (medical devices) and 9 (monitoring and control equipment).*

## EU ELV Directive 2000/53/EC

## China RoHS 2 Directive MIIT Order No 32, 2016

## EU REACH Regulation (EC) No. 1907/2006

Current ECHA Candidate List: **JUL 2019 (201)**  
Candidate List Declared Against: **JUN 2016 (169)**

## Halogen Content

## Solder Process Capability

Not applicable for solder process capability

## Statement of

[Statement of Compliance pdf](#)



## Compliance

### Compliance Documents

There may be Environmental Compliance related documents on the [DOCUMENTATION Tab](#)

### Disclaimer

This information is provided based on reasonable inquiry of our suppliers and represents our current actual knowledge based on the information they provided. This information is subject to change. The part numbers that TE has identified as EU RoHS compliant have a maximum concentration of 0.1% by weight in homogenous materials for lead, hexavalent chromium, mercury, PBB, PBDE, DBP, BBP, DEHP, DIBP, and 0.01% for cadmium, or qualify for an exemption to these limits as defined in the Annexes of Directive 2011/65/EU (RoHS2). Finished electrical and electronic equipment products will be CE marked as required by Directive 2011/65/EU. Components may not be CE marked. Additionally, the part numbers that TE has identified as EU ELV compliant have a maximum concentration of 0.1% by weight in homogenous materials for lead, hexavalent chromium, and mercury, and 0.01% for cadmium, or qualify for an exemption to these limits as defined in the Annexes of Directive 2000/53/EC (ELV). Regarding the REACH Regulations, TE's information on SVHC in articles for this part number is still based on the European Chemical Agency (ECHA) 'Guidance on requirements for substances in articles'(Version: 2, April 2011), applying the 0.1% weight on weight concentration threshold at the finished product level. TE is aware of the European Court of Justice ruling of September 10th, 2015 also known as O5A (Once An Article Always An Article) stating that, in case of 'complex object', the threshold for a SVHC must be applied to both the product as a whole and simultaneously to each of the articles forming part of its composition. TE has evaluated this ruling based on the new ECHA "Guidance on requirements for substances in articles" (June 2017, version 4.0) and will be updating its statements accordingly.

## Products with Similar Specs

[View All Similar Products](#)

### THIS PRODUCT

### TOP RESULTS

DUCT SEALS  
**938709-000**  
RDSS-75(S10)



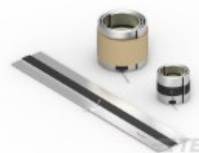
**In-Stock**

DUCT SEALS  
**776895-000**  
RDSS-60(S10)



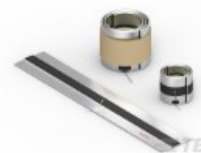
**In-Stock**

DUCT SEALS  
**E73648-000**  
RDSS-75(S3)



**In-Stock**

DUCT SEALS  
**588693-000**  
RDSS-125(S10)



**Non-Stocked**

Product Availability : **AMERICAS, ANZPAC, ASIA, EMEA**

Product Type : **Duct Sealing System**

Admissible Cable Dia. at Duct Inside Dia. : **0-28 at 55.0 mm mm, 0-30 at 60.0 mm mm, 0-40 at 65.0 mm mm, 0-46 at**

Product Availability : **AMERICAS, ANZPAC, ASIA, EMEA**

Product Type : **Duct Sealing System**

Admissible Cable Dia. at Duct Inside Dia. : **0-18 at 45.0 mm mm, 0-30 at 50.0 mm mm, 0-38 at 55.0 mm mm, 0-45 at**

Product Availability : **AMERICAS**

Product Type : **Duct Sealing System**

Admissible Cable Dia. at Duct Inside Dia. : **0-28 at 55.0 mm mm, 0-30 at 60.0 mm mm, 0-40 at 65.0 mm mm, 0-46 at 70.0 mm mm, 0-56 at 75.0 mm**

Product Availability : **AMERICAS, ANZPAC, ASIA, EMEA**

Product Type : **Duct Sealing System**

Admissible Cable Dia. at Duct Inside Dia. : **0-103 at 125.0 mm mm, 0-65 at 100.0 mm mm, 0-75 at 105.0 mm mm, 0-82 at**

## Also in the Series | [Raychem RDSS](#)



Duct Seals (12)

[ABOUT TE CONNECTIVITY](#)

[FOR PARTNERS](#)

[SUPPORT](#)

[CALL US](#)

[LIVE CHAT](#)

[UNITED STATES \(EN\)](#)