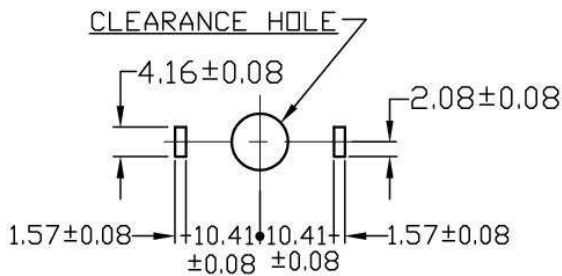
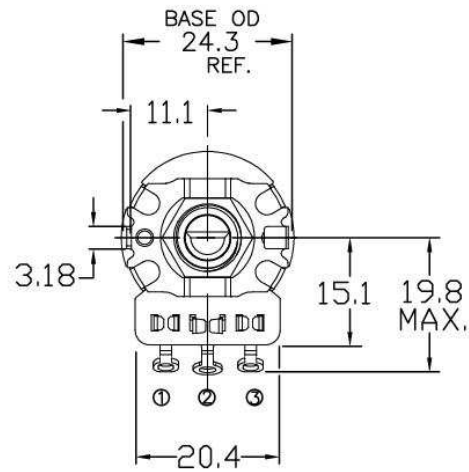
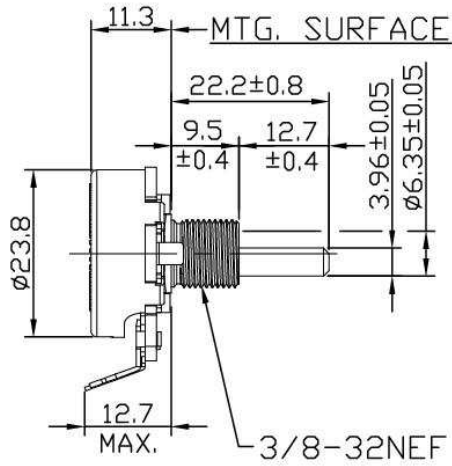
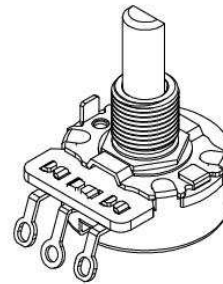


UNIT : mm

STANDARD FLAT LOCATION SHOWN @ 50% ROTATION.

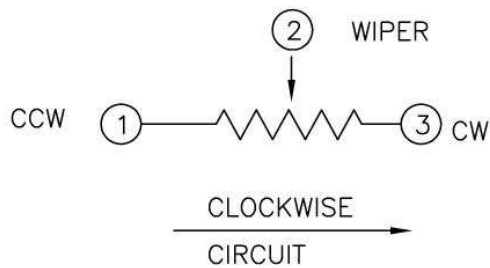


MOUNTING HOLE DETAIL



NOTES:

1. RESISTANCE : 2.5K±20%
2. RESIDUAL RESISTANCE :
HEHO : 2 ohms max.
LEHO : 2 ohms max.
3. CURVE TYPE : LINEAR CTS TYPE D
4. BUSHING & SHAFT WITH BRASS.
5. TIN PLATED COVER
6. THE POTS SHALL WITHSTAND 15 IN-LBS MIN.
7. TORQUE : 3/4-6 IN.OZ
8. HARDWARE :Nut:45T-3; Washer:1220A
9. FOR ADDITIONAL REQUIREMENTS SEE CTS ENG. SPEC. # EN-SPE-450001N



COMPONENTS TAIWAN LTD. KAOHSIUNG, TAIWAN, ROC		CUSTOMER : Pelco Component Technologies	
CTS PART NO. RD-5-11775-0 CUSTOMER PART NO.		REV A	SAMPLE REQUEST: 450-8224
ISSUED DATE : 01/24/17'		TOLERANCE UNLESS OTHERWISE SPECIFIED .X (1 PLACE) : ± 0.3 .XX (2 PLACE) : ± 0.13 ANGLE : ± 5°	
CTS TYPE : T450		CHECKED BY : S.S. Chen	CUSTOMER APPROVAL: (SIGNATURE & DATE)
		APPROVED BY : Jerry	

