

Type RAVT Resettable Fuse (PTC's) Battery Strap



www.optifuse.com (619) 593-5050

Application:

- Rechargeable battery packs
- Lithium cell and battery packs

Product Features:

- Low profile, Solid State

Operation Current: 1.1A ~ 2.4A

Maximum Voltage: 16VDC

Temperature Range: -40°C to 85°C

Agency Standards and Listings:



Electrical Characteristics (23°C)

Part Number	Hold Current I_H , A	Trip Current I_T , A	Max. Time to Trip at $5xI_H$, s	Rated Voltage V_{MAX} , Vdc	Max Current I_{MAX} , A	Typical Power P_d , W	Resistance Tolerance		
							R_{MIN} Ω	R_{MAX} Ω	$R1_{MAX}$ Ω
RAVT-110	1.10	2.7	5.0	16	100	0.7	0.038	0.070	0.140
RAVT-170	1.70	3.4	5.0	16	100	0.7	0.030	0.052	0.105
RAVT-175	1.75	3.6	5.0	16	100	0.8	0.029	0.051	0.102
RAVT-200	2.00	4.7	5.0	16	100	0.9	0.022	0.039	0.078
RAVT-210G	2.10	4.7	5.0	16	100	1.2	0.018	0.030	0.060
RAVT-240	2.40	5.9	5.0	16	100	1.0	0.014	0.026	0.052

I_H = **Hold Current** – Maximum current at which the device will not trip at 23°C still air.

I_T = **Trip Current** – Minimum current at which the device will always trip at 23°C still air.

V_{MAX} = Maximum voltage device can withstand without damage at it's rated current.

I_{MAX} = Maximum fault current device can withstand without damage at rated voltage (V max).

P_d = Maximum power dissipated from device when in the tripped state in 23°C still air environment.

R_{MIN} = Minimum device resistance at 23°C.

$R1_{MAX}$ = Maximum device resistance at 23°C, 1 hour after tripping.

Physical Specifications:

Lead Material: 0.13 mm nominal thickness, quarter hard nickel

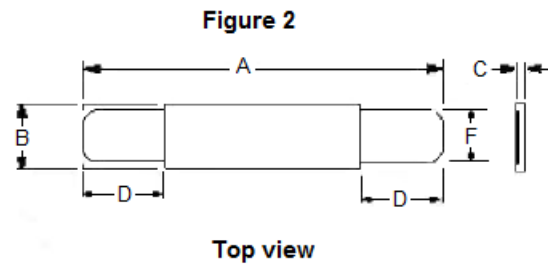
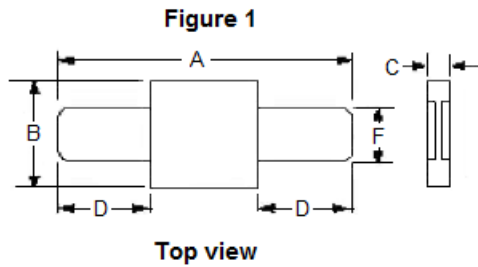
Insulating Material: Polyester tape

Type RAVT Resettable Fuse (PTC's) Battery Strap



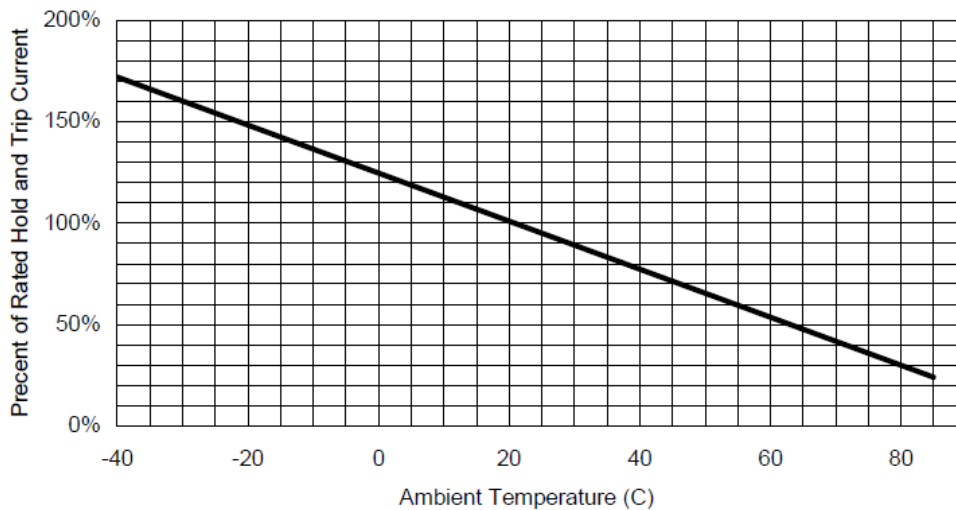
www.optifuse.com (619) 593-5050

RAVT Product Dimensions (millimeters)



Part Number	Fig	A		B		C		D		F	
		Min	Max	Min	Max	Min	Max	Min	Max	Min	Max
RAVT-110	2	23.6	25.6	2.6	2.9	0.5	0.9	7.0	8.0	2.3	2.5
RAVT-170	1	15.4	17.5	7.0	7.4	0.5	0.9	4.0	6.2	3.9	4.1
RAVT-175	2	21.0	23.0	3.5	3.9	0.5	0.9	4.6	6.6	2.9	3.1
RAVT-200	2	21.0	23.0	4.1	4.5	0.5	0.9	3.0	4.8	2.9	3.1
RAVT-210G	2	21.0	23.0	4.9	5.2	0.5	0.9	4.1	5.5	3.9	4.1
RAVT-240	2	23.8	26.0	4.9	5.3	0.5	0.9	3.5	5.5	3.9	4.1

Thermal Derating Curve – RAVT Series



Note: All specifications subject to change without notice.

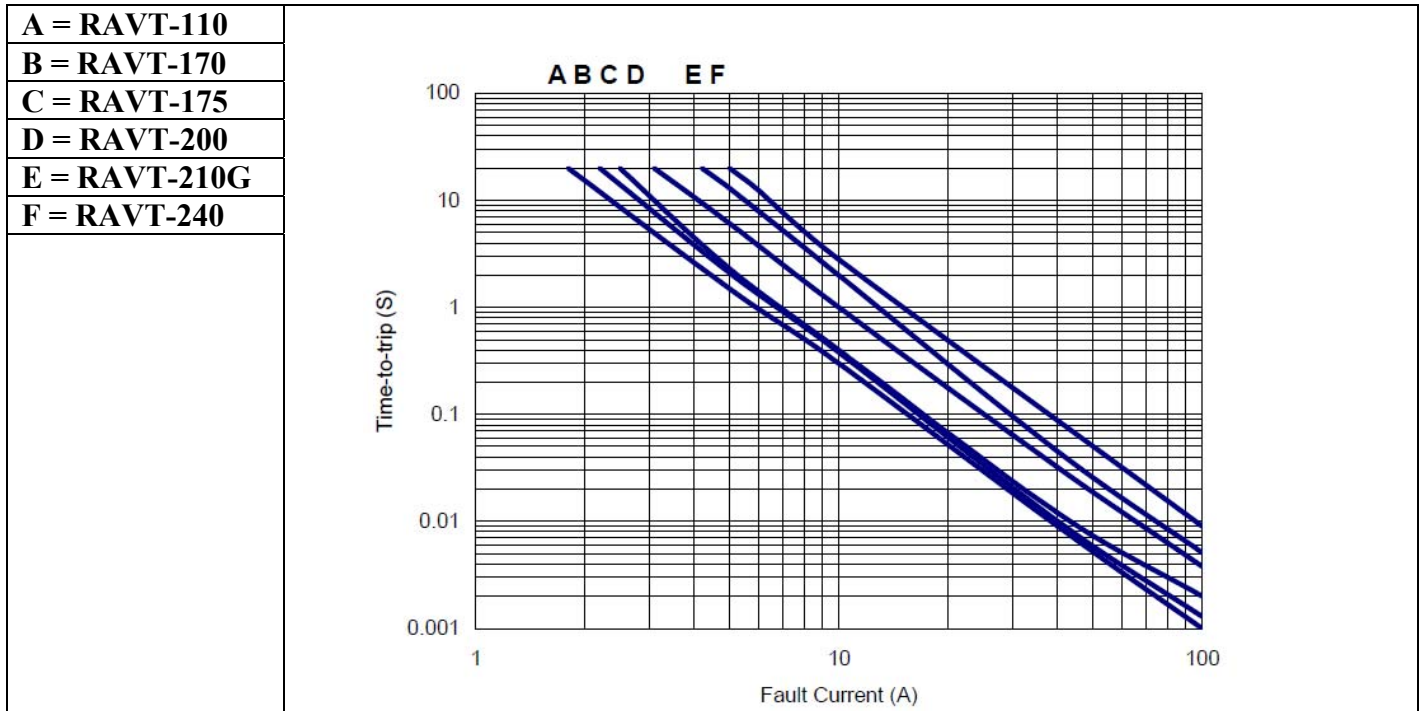
Rev A 11/2012 - Page: 2/3
Code F01-01H

Type RAVT Resettable Fuse (PTC's) Battery Strap



www.optifuse.com (619) 593-5050

Typical Time-To-Trip at 23°C



Standard Packaging

Part Number	Pcs/Bag
RAVT-110 ~ RAVT-210G	1K
RAVT-240	500

<p>Warning:</p>	<ul style="list-style-type: none"> -Operation beyond the specified maximum ratings or improper use may result in damage and possible electrical arcing and/or flame. -PPTC device are intended for occasional overcurrent protection. Application for repeated overcurrent condition and/or prolonged trip are not anticipated. -Avoid contact of PPTC device with chemical solvent. Prolonged contact will damage the device performance.
------------------------	---

Note: All specifications subject to change without notice.