

Type RAVL Resettable Fuse (PTC's) Battery Strap



www.optifuse.com (619) 593-5050

Application:

- Rechargeable battery packs
- Lithium cell and battery packs

Product Features:

Low profile, Solid State

Operation Current: 1.7A ~ 2.3A

Maximum Voltage: 12VDC

Temperature Range: -40°C to 85°C

Agency Standards and Listings:



Electrical Characteristics (23°C)

Part Number	Hold Current	Trip Current	Max. Time to Trip	Rated Voltage	Max Current	Typical Power	Resistance Tolerance		
	I_H, A	I_T, A	at $5xI_H, s$	V_{MAX}, Vdc	I_{MAX}, A	Pd, W	R_{MIN}	R_{MAX}	$R1_{MAX}$
	Ω	Ω	Ω				Ω	Ω	Ω
RAVL-170	1.7	4.1	5.0	12	100	1.4	0.018	0.032	0.064
RAVL-175	1.75	4.2	5.0	12	100	1.4	0.017	0.031	0.062
RAVL-230	2.3	5.0	5.0	12	100	1.4	0.012	0.018	0.036

I_H = Hold Current – Maximum current at which the device will not trip at 23°C still air.

I_T = Trip Current – Minimum current at which the device will always trip at 23°C still air.

V_{MAX} = Maximum voltage device can withstand without damage at it's rated current.

I_{MAX} = Maximum fault current device can withstand without damage at rated voltage (V max).

Pd = Maximum power dissipated from device when in the tripped state in 23°C still air environment.

R_{MIN} = Minimum device resistance at 23°C.

$R1_{MAX}$ = Maximum device resistance at 23°C, 1 hour after tripping.

Physical Specifications:

Lead Material: 0.13mm nominal thickness, quarter hard nickel

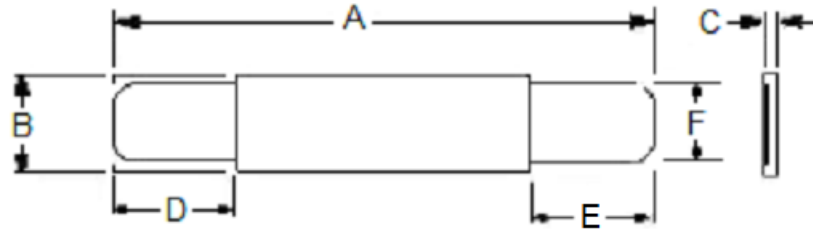
Insulating Material: Polyester tape

**Type RAVL
Resettable Fuse (PTC's)
Battery Strap**



www.optifuse.com (619) 593-5050

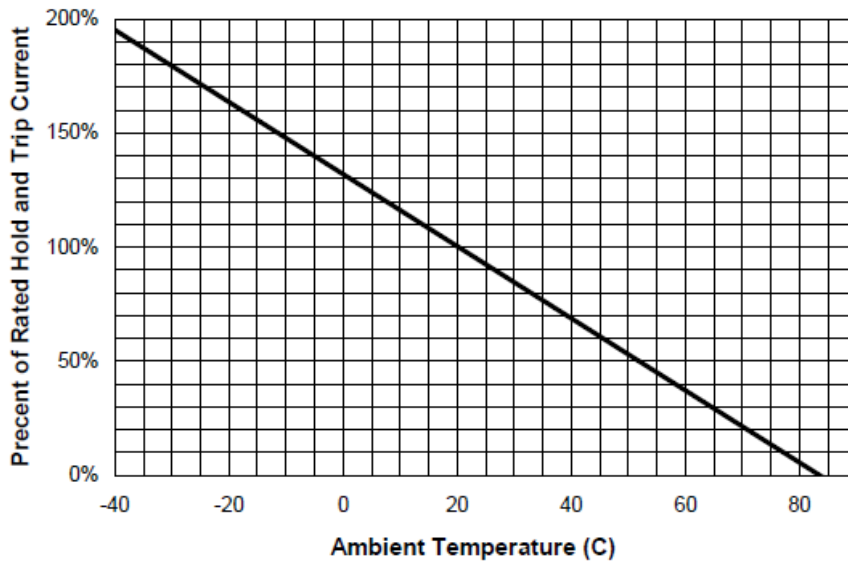
RAVL Product Dimensions (millimeters)



Top View

Part Number	A		B		C		D		E		F	
	Min	Max	Min	Max	Min	Max	Min	Max	Min	Max	Min	Max
RAVL-170	20.8	23.2	3.5	3.9	0.5	0.8	4.5	6.5	4.5	6.5	2.4	2.6
RAVL-175	23.0	24.5	2.9	3.3	0.5	0.8	4.7	7.2	3.8	5.4	2.4	2.6
RAVL-230	20.9	23.1	4.9	5.3	0.5	0.8	4.1	5.8	4.1	5.8	3.9	4.1

Thermal Derating Curve – RAVL Series



Note: All specifications subject to change without notice.

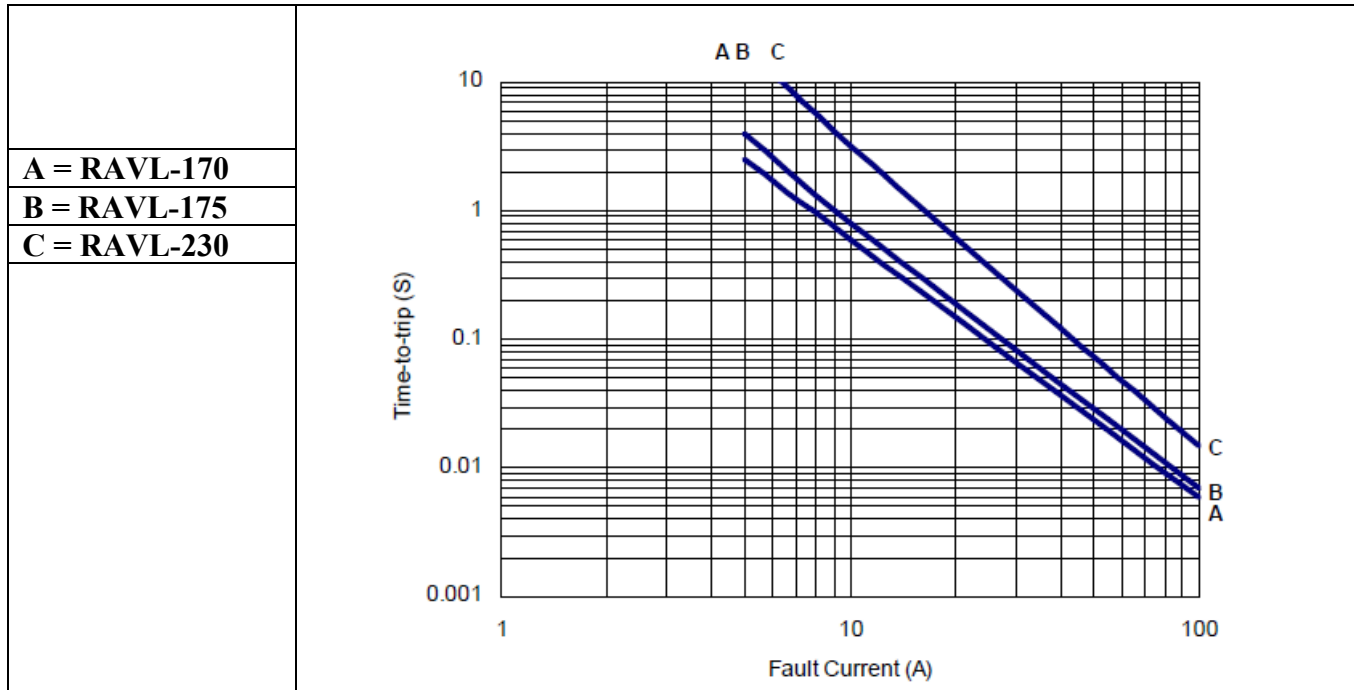
Rev A 11/2012 - Page: 2/3
Code F01-01H

Type RAVL Resettable Fuse (PTC's) Battery Strap



www.optifuse.com (619) 593-5050

Typical Time-To-Trip at 23°C



Standard Packaging

Part Number	Pcs/Bag
RAVL-170	1K
RAVL-175	1K
RAVL-230	500

Warning:



- Operation beyond the specified maximum ratings or improper use may result in damage and possible electrical arcing and/or flame.
- PPTC device are intended for occasional overcurrent protection. Application for repeated overcurrent condition and/or prolonged trip are not anticipated.
- Avoid contact of PPTC device with chemical solvent. Prolonged contact will damage the device performance.

Note: All specifications subject to change without notice.

Rev A 11/2012 - Page: 3/3
Code F01-01H