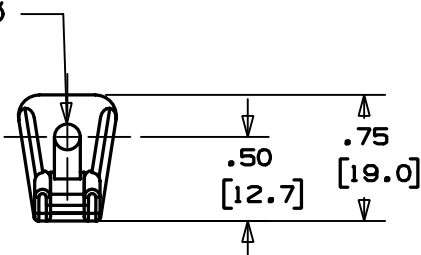
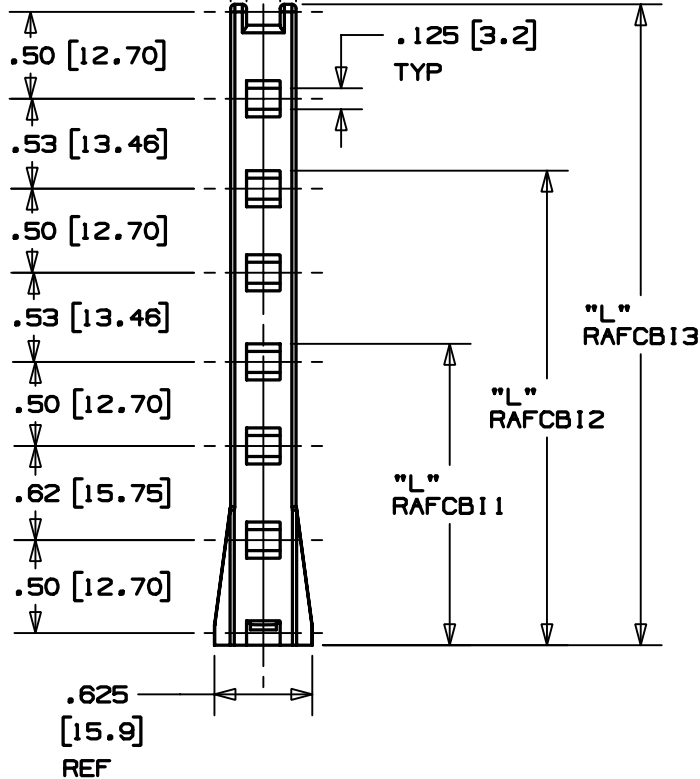


THIS COPY IS PROVIDED ON A RESTRICTED BASIS AND IS NOT TO BE USED IN ANY WAY DETRIMENTAL TO THE INTERESTS OF PANDUIT CORP.

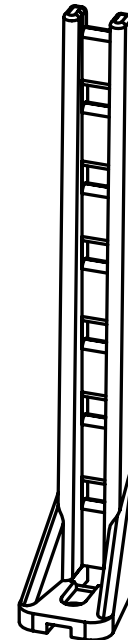
.145 ± .007  $\phi$   
[3.7 ± 0.18]



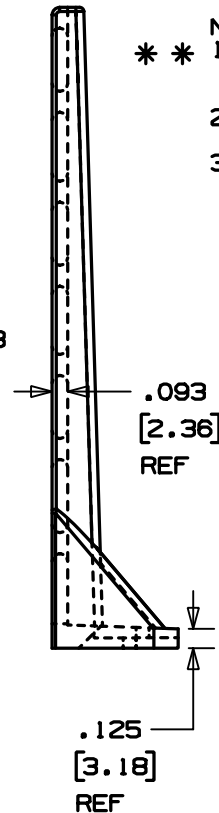
.200 [5.1]      .38 [9.7]



PANDUIT PART NO. **	'L' in / (mm)	RECOM'D FASTNER	WEIGHT lbs 100 (g) pcs
RAFCB11-S6	1.75 (44.4)	#6 (M3)	0.64 (292)
RAFCB12-S6	2.78 (70.6)		0.87 (394)
RAFCB13-S6	3.81 (96.8)		1.06 (479)



- NOTES:
- \*\* 1. SEE CURRENT PRICE SHEET FOR PART NUMBER SUFFIX DESIGNATION FOR PACKAGE SIZE.
  - 2. MATERIAL: 6/6 NYLON  
COLOR: BLACK
  - 3. USE THE FOLLOWING CABLE TIES WITH ANY OF THESE PRODUCTS:  
M=MINATURE, I=INTERMEDIATE, S=STANDARD



DIMENSIONS IN BRACKETS ARE METRIC [ mm ]	
CAD FILENAME/LAYER: G00239FZ_PB_RAFCB1_00	
<b>PANDUIT</b> CORP. TINLEY PARK, ILLINOIS	
RIGHT ANGLE FLAT CABLE BASE	
UNLESS OTHERWISE SPECIFIED, DIMENSIONAL TOLERANCES ARE: (.X) ±0.05 (1.3) (.XXX) ±0.010 (0.25) (.XX) ±0.02 (0.5) ANGLES ± 5°	UNLESS OTHERWISE SPECIFIED, ALL DIMENSIONS ARE GIVEN IN INCHES, THIRD ANGLE PROJECTION.
DRAWN BY JAD	MAT'L: NONE
DATE 1/15/04	SEE NOTE 2
DWG'G	DWG NO. GB0239KZ
	SIZE A

R	1/15/04	JAD		INITIAL RELEASE	GB0239KZ	R			
REV	DATE	BY	CHK	DESCRIPTION	ECN	- R	CUST	SUP	