

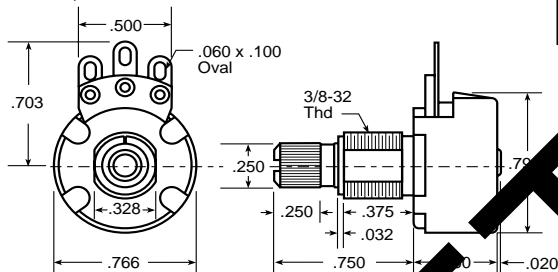


# Bushing Mount Wirewound Controls

Power Rating: 5 Watts @ 35°C  
 Ohms Tolerance: ± 10% (Standard)  
 (Other tolerances available)  
 Dielectric Strength: Mounting plate to terminals,  
 high pot test for 1 minute  
 @ 900 VAC  
 Insulation Resistance: 1000 megohms minimum  
 (50% relative humidity @ 25°C)

Operating Temperature: -30°C to +105°C  
 Operating Life: 10,000 cycles standard  
 Resistance Taper: Linear  
 (Others available)  
 Mechanical Rotation: 305° ±5°  
 Bushing Information: Thread: 3/8-32 NEF-2A  
 Contact Arm: Insulated from case

Ohms Rating	Max. Amperes	Catalog Number
1	2.200	VWS1
50	.320	VWS50
100	.220	VWS100
200	.160	VWS200
1K	.071	VWS1K
5K	.032	VWS5K
20K	.016	VWS20K

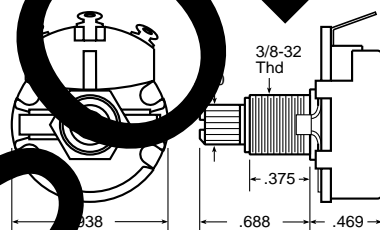


## 5 Watts - LW Series

Power Rating: 5 Watts @ 25°C  
 4 Watts @ 55°C  
 Ohms Tolerance: ± 10% (Standard)  
 (Other tolerances available)  
 Dielectric Strength: Mounting plate to terminals,  
 high pot test for 1 minute  
 @ 900 VAC  
 Insulation Resistance: 1000 megohms minimum  
 (50% relative humidity @ 25°C)

Operating Temperature: -30°C to +105°C  
 Operating Life: 10,000 cycles standard  
 Resistance Taper: Linear only  
 Mechanical Rotation: 300° ±5°  
 Bushing Information: Thread: 3/8-32 NEF-2A  
 Contact Arm: Insulated from case

Ohms Rating	Max. Amperes	Catalog Number
5	.890	LW5
8	.710	LW8
10	.630	LW10
25	.450	LW25
50	.280	LW50
100	.200	LW100
250	.130	LW250
500	.089	LW500
1K	.063	LW1K
1.5K	.058	LW1P5K
2.5K	.040	LW2P5K
5K	.028	LW5K
10K	.020	LW10K



## 12.5 Watts - MG Series

Power Rating: 12.5 Watts @ 40°C  
 10 Watts @ 55°C  
 Ohms Tolerance: ± 10% (Standard)  
 (Other tolerances available)  
 Dielectric Strength: Mounting plate to terminals,  
 high pot test for 1 minute  
 @ 900 VAC  
 Insulation Resistance: 1000 megohms minimum  
 (50% relative humidity @ 25°C)

Operating Temperature: -55°C to +250°C  
 Operating Life: 10,000 cycles standard  
 Resistance Taper: Linear  
 (Other tapers available)  
 Mechanical Rotation: 294° ±5°  
 Bushing Information: Thread: 3/8-32 NEF-2A  
 Contact Arm: Insulated from case

Ohms Rating	Max. Amperes	Catalog Number
10	1.100	MG10
25	.710	MG25
50	.550	MG50
500	.160	MG500
1K	.110	MG1000
2.5K	.070	MG2500
25K	.022	MG25K

