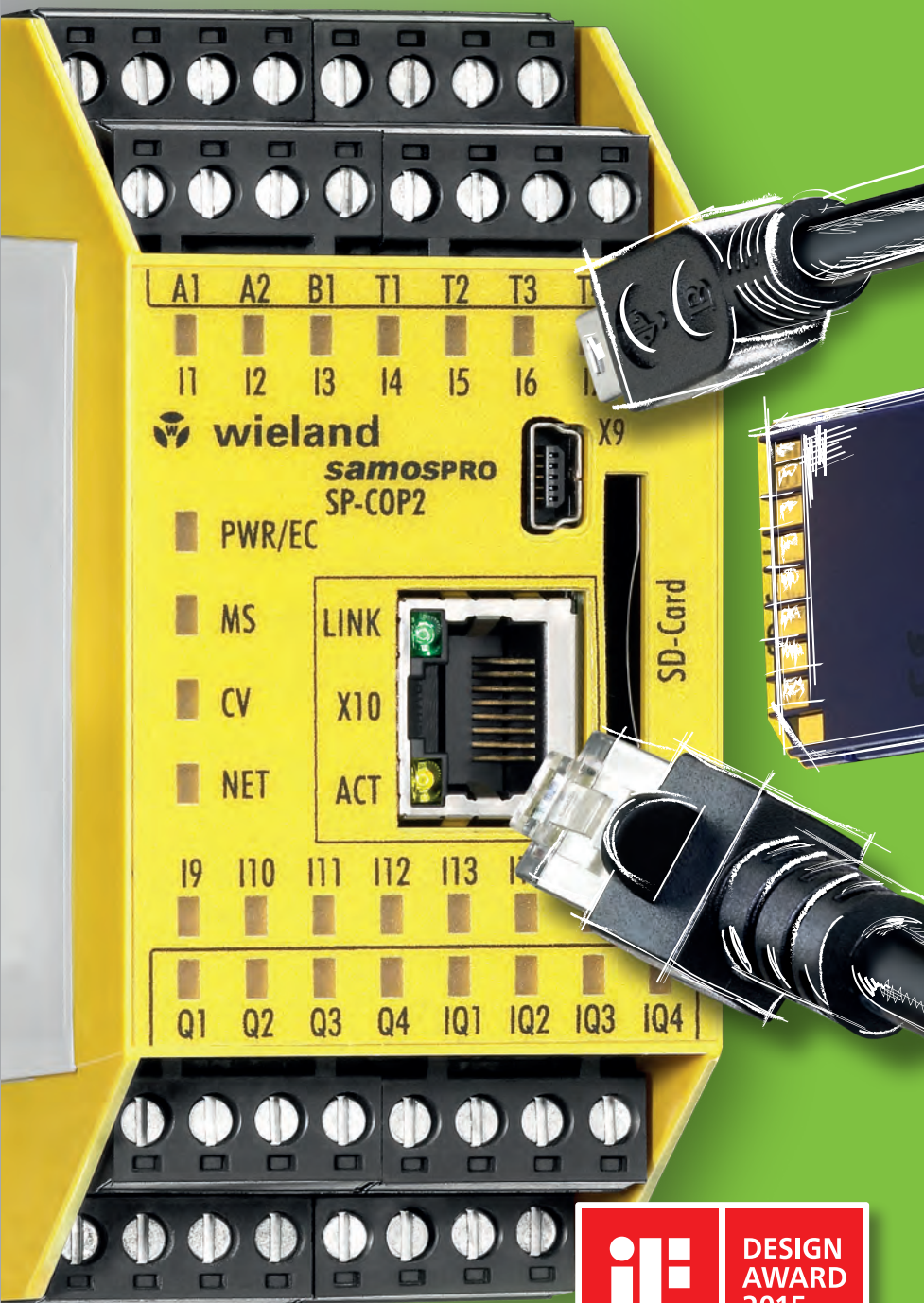


**safety**

 **wieland**



**samos PLAN 5+**

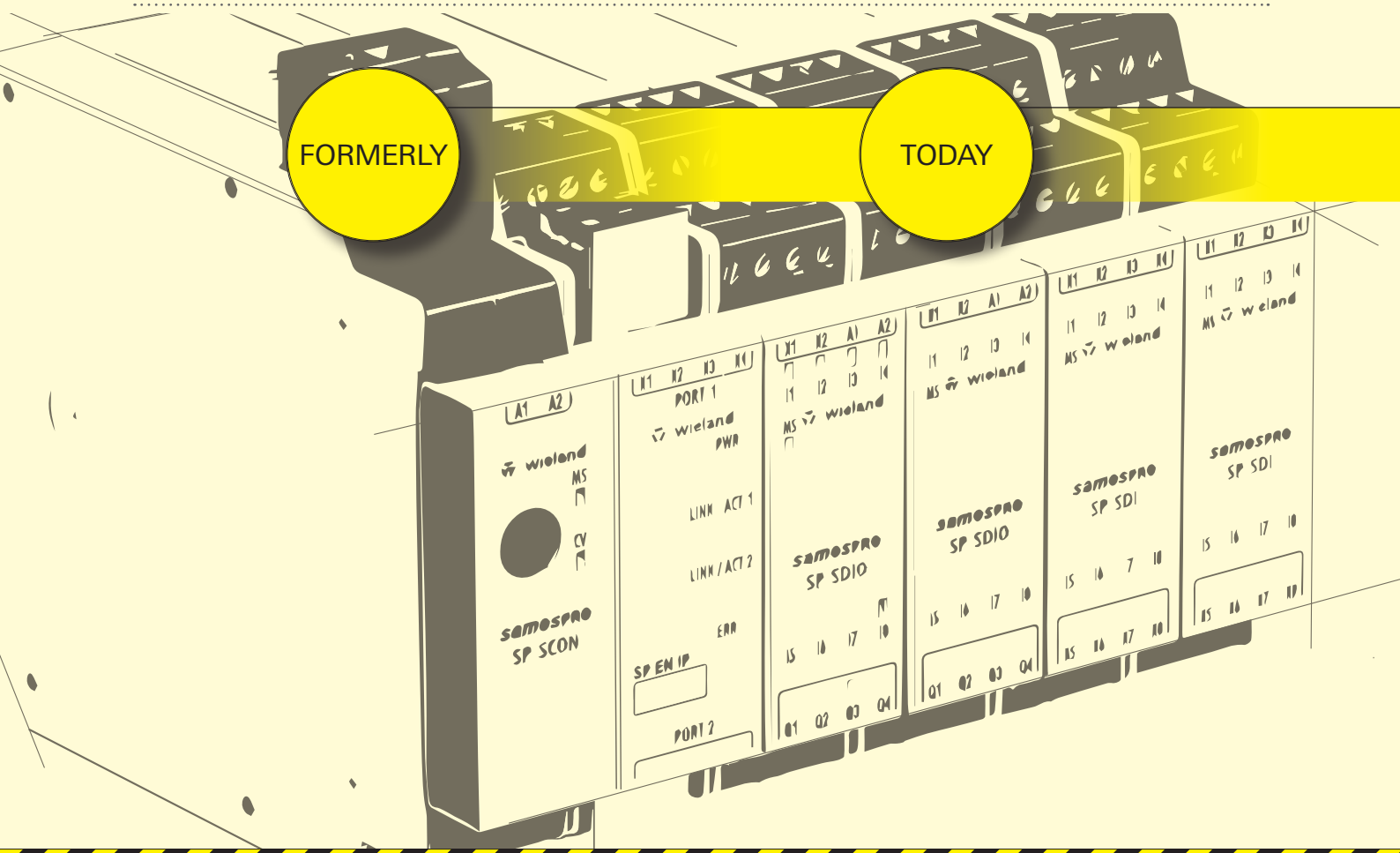
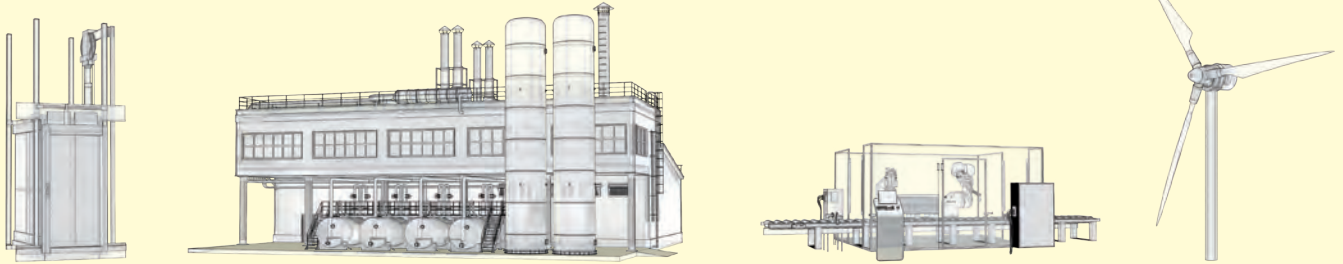


**samos**<sup>®</sup> PRO COMPACT  
The safety control  
of the next generation



Because it really does come down to size ...

In the control cabinet in all industries **so far**.



**samos®** PRO COMPACT

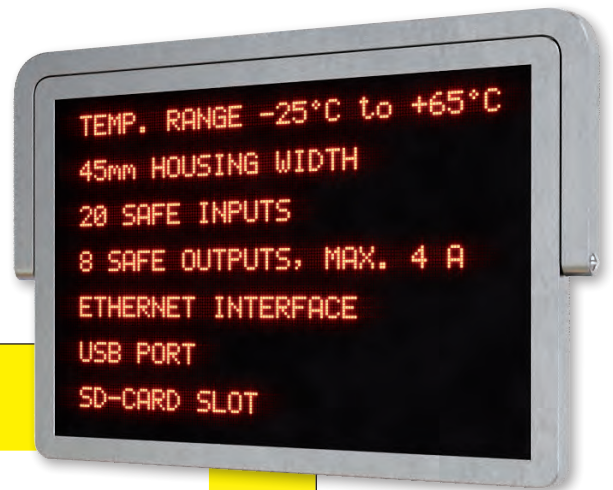
The safety control of the next generation

From **today** on and in the **future!**

Illustration  
Original size

45 mm

TOMORROW



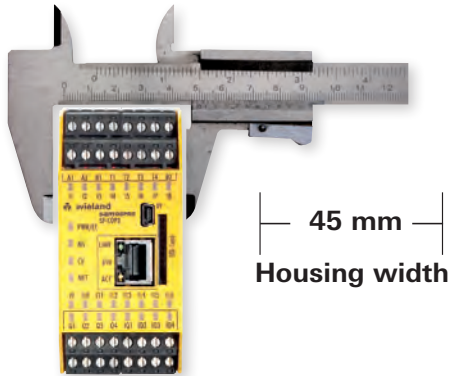
**samos®** PRO COMPACT innovativ - compact - safe:

The project planning tool **samos®** PLAN5+ for **samos®** PRO COMPACT now offers users still more support, directly extending through all life phases of a machine.

- Comprehensive library of reliable, certified function blocks
- Configurable project documentation at the press of a button
- Integrated simulation and logic analysis of the safety functions
- Convenient integration in the fieldbus and Ethernet networks
- Online diagnosis and remote maintenance for more transparency



## Universal and future-proof



### Compact power pack

16 safe inputs, 4 safe outputs and 4 switchable safe in-/outputs on a construction width of 45 mm solve many safety tasks – a safety control of the new generation for universal automation tasks today and in the future.



### Well networked

Industrial Ethernet protocols are available right from the start and fieldbus gateways can be extended as needed – integrated connection in the most widely varying industrial networks is a decisive advantage of the system.



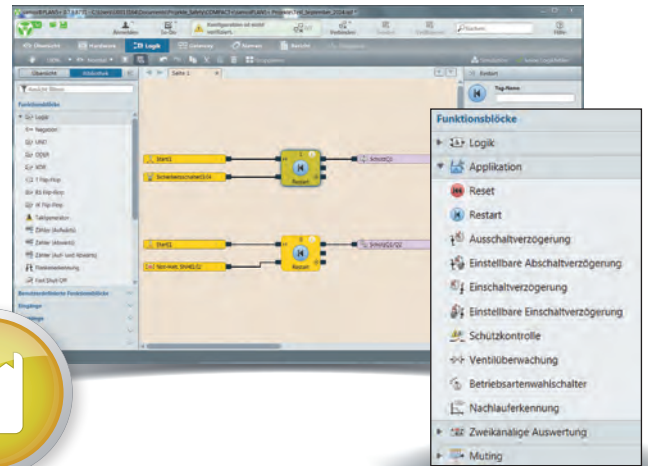
### Modular extendability

For comprehensive applications, the system can be extended with additional modules to as many as 116 secure inputs and 56 secure outputs – ideal precondition for flexible, secure automation, even for larger machines and systems.



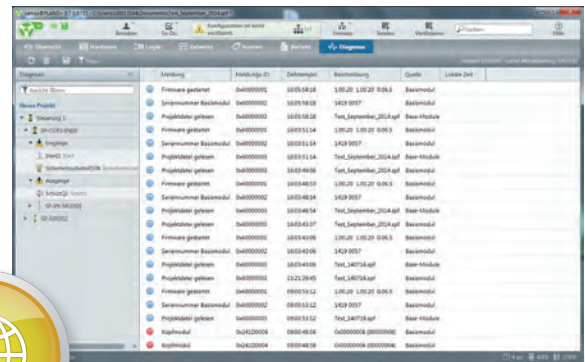
**Certified expertise**

The comprehensive library of certified, tried and tested function blocks makes it easier to realize all safety functions – over 40 different functions are available at any time and with no additional programming effort.



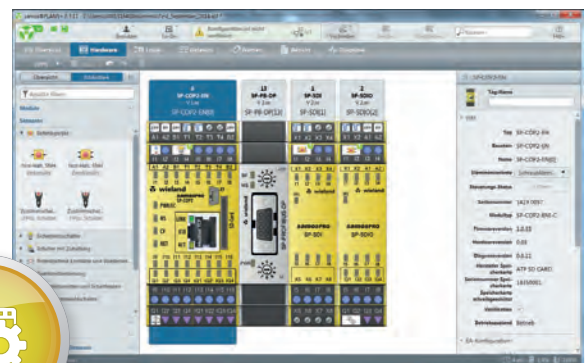
**Globally accessible**

Remote maintenance can be easily realized in the system without the additional effort that is typical with other systems – with the integrated online diagnosis and the system log book, problems in global operation are quickly localized and expensive maintenance calls are avoided.



**Individually adaptable**

Even user-specific sensors and function blocks can be defined and managed in libraries as needed – no other system offers greater multi-functionality.



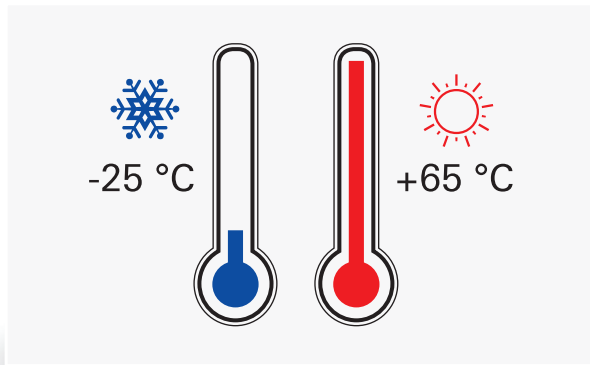
For a safe press operation  
**samos®PLAN5+ provides 6 efficient function blocks.**

## Communicative and powerful



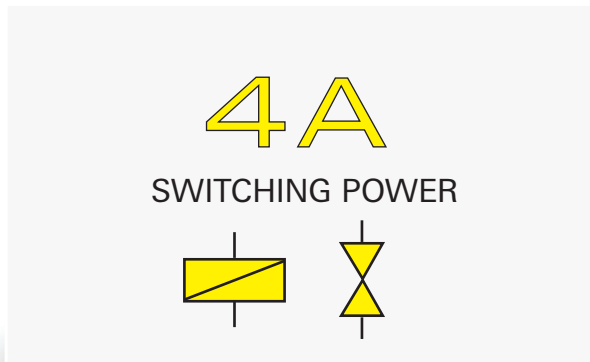
### Integrated interfaces

Integrated USB and Ethernet interfaces enable custom-tuned access to the system – this means more transparency for the user during the project planning phase and in operation.



### Conceived for the toughest requirements

The exceptionally wide ambient temperature range from -25 °C to +65 °C provides security for all applications – use even under extreme ambient conditions is now made possible for the first time.

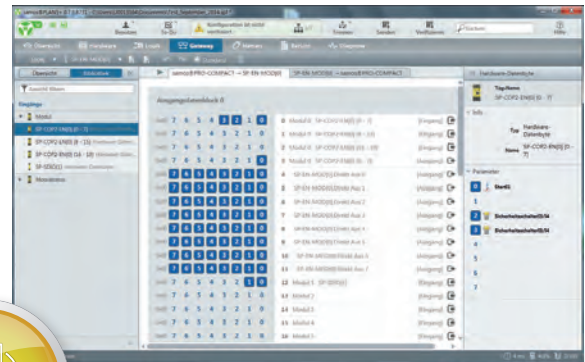
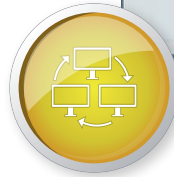


### High switching power

4 A non-wearing switching power at each individual output of the system – no other safety control offers this kind of switching performance. High performance alternative to contactors and relays.

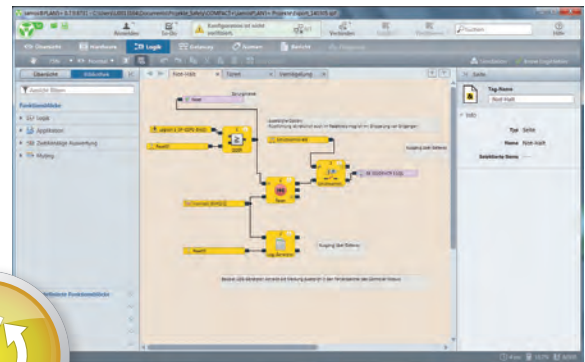
### Simple communication

Thanks to convenient support in the tool, all industrial Ethernet or fieldbus protocols can be easily used – never before has industrial communication been so easily realized.



### Unrestricted use

All in- and outputs and up to 300 function blocks can be applied in each project with complete freedom – ideal precondition for the solution of simple, but nonetheless complex, safety tasks.



### Protection of expertise

In addition, the tool offers the possibility of individual generation of user-specific function blocks and an integrated expertise protection for projects – performance features sought for in vain in other systems.



## Simple and reliable



### Exchangeable program memory

The exchangeable SP-COP-CARD in SD card format offers 512 MB memory space for application programs and is easily accessible – the simple handling of projects saves much time during commissioning, reproduction and when serviced is required.



### Optical function display via LED

All in- and outputs of the system have an optical display to which the connections are explicitly assigned – visualization of the operating status of a machine could not be quicker and more understandable.



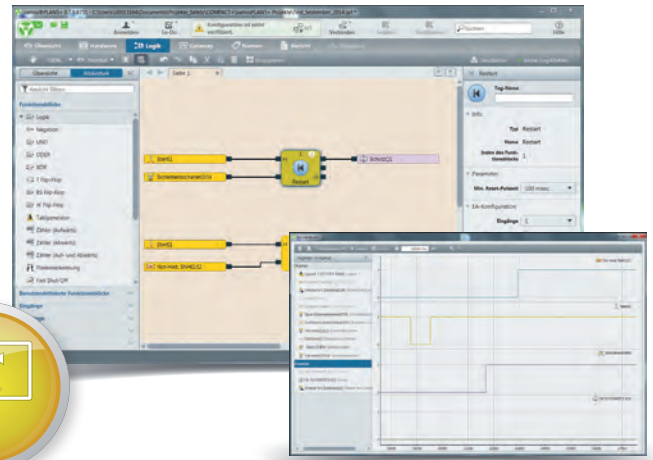
### Flexible connection technology

All modules of the system are available with either screw or push-in terminal blocks – this means even more flexibility for the user, also for the connection technology.



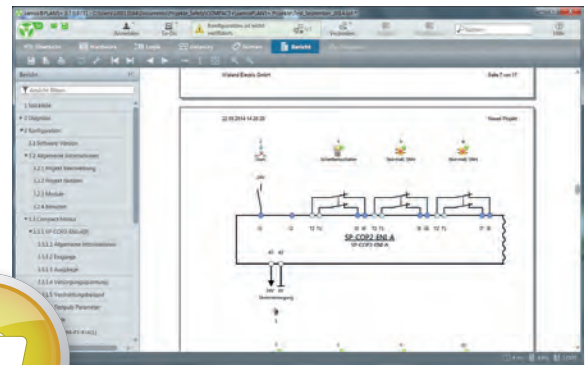
### Perfect process simulation

The simulation function with integrated logic analyzer enables a check of the programmed safety functions already on the PC – this helps in problem solving, spares valuable time during commissioning on the machine and raises functional security overall.



### Integrated documentation

The documentation function generates a customized report of the project at the press of a button – essential part of machine documentation in compliance with regulations.







### Compatible and convenient

The modern programming tool **samos®PLAN5+** offers open interfaces at many places and of course is suitable for all Windows operating systems – a more productive and reliable workflow is also guaranteed for the future.



# samos® PRO COMPACT | Ordering overview

	Name/type	Description	Art.No.	Std. Pack
<b>SP-COP1-A</b>    <b>SP-COP2-EN-A</b> <b>SP-COP2-ENI-A</b>    <b>SP-COP1-C</b>    <b>SP-COP2-EN-C</b> <b>SP-COP2-ENI-C</b>  	samos® PRO COMPACT			
	SP-COP1-A	USB connection, 20 inputs / 4 outputs, screw terminal block, pluggable	R1.190.1110.0	1
	SP-COP1-P-A	... including press function	R1.190.1130.0	1
	SP-COP2-EN-A	USB and Ethernet connection, 16 inputs / 4 outputs, 4 configurable I/O, screw terminal block, pluggable	R1.190.1210.0	1
	SP-COP2-EN-P-A	... including press function	R1.190.1230.0	1
	SP-COP2-ENI-A	USB and industrial Ethernet connection, 16 inputs / 4 outputs, 4 configurable I/O, screw terminal block, pluggable	R1.190.1310.0	1
	SP-COP2-ENI-P-A	... including press function	R1.190.1330.0	1
	SP-COP1-C	USB connection, 20 inputs / 4 outputs, push-in terminal block, pluggable	R1.190.1120.0	1
	SP-COP1-P-C	... including press function	R1.190.1140.0	1
	SP-COP2-EN-C	USB and Ethernet connection, 16 inputs / 4 outputs, 4 configurable I/O, push-in terminal block, pluggable	R1.190.1220.0	1
SP-COP2-EN-P-C	... including press function	R1.190.1240.0	1	
SP-COP2-ENI-C	USB and industrial Ethernet connection, 16 inputs / 4 outputs, 4 configurable I/O, push-in terminal block, pluggable	R1.190.1320.0	1	
SP-COP2-ENI-P-C	... including press function	R1.190.1340.0	1	
<b>Technical data</b>				
Function	Safety control			
Function display	24 LED green (in-/outputs) 4 LED green/red/yellow (module status)			
<b>Supply circuit</b>				
Operating voltage range	16.8 V DC to 30 V DC			
Rated power	3.5 W			
Galvanic isolation	No			
<b>Secure input circuit I<sub>n</sub></b>				
Quantity / type	20 (16)* / digital			
Primary voltage range	15 V DC to 30 V DC			
Nominal current	2 mA			
<b>Secure output circuit Q<sub>n</sub></b>				
Quantity / type	4 (8)* / digital			
Nominal output voltage	24 V DC			
Output voltage I <sub>n</sub> per output	4 A			
Short-circuit protective device	Yes			
<b>Interfaces</b>				
USB Mini interface	Yes			
Ethernet interface	Yes*			
Industrial Ethernet protocol*	Modbus TCP, Profinet IO, Ethernet/IP			
Program memory	External			
<b>General data</b>				
Protection class as per DIN 60529	IP20			
Air and creepage distances	EN 60664-1			
Operating ambient temperature	-25 °C to +65 °C			
Standards	EN 61508, EN 62061, EN ISO 13849-1, EN 50156-1, EN 81-1			
Certificates / Approvals	TÜV, cULus			
* Dependent on device type				






You will find accessories and additional information in our eShop under <https://eshop.wieland-electric.com>




We will be happy to help you with selection and commissioning. You can reach our Technical Support under the telephone number **+49 951 9324-999**

# samos® PRO COMPACT | Ordering overview . Accessories

## Extension modules | Gateways

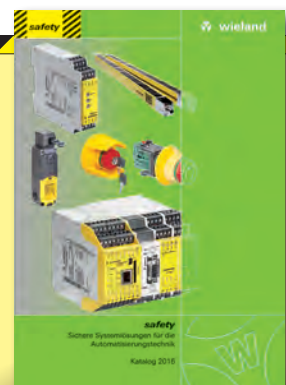
	Name/type	Description	Art.No.	Std. Pack
<b>SP-SDIO84-P1-K-A</b> <b>SP-SDIO84-P1-K-C</b> 	SP-SDIO84-P1-K-A	In-/output extension with output test pulses, 8 inputs / 4 outputs, screw terminal block, pluggable	R1.190.0030.0	1
	SP-SDIO84-P1-K-C	In-/output extension with output test pulses, 8 inputs / 4 outputs, push-in terminal block, pluggable	R1.190.0040.0	1
<b>SP-SDI8-P1-K-A</b> <b>SP-SDI8-P1-K-C</b> 	SP-SDI8-P1-K-A	Input extension, 8 inputs, screw terminal block, pluggable	R1.190.0050.0	1
	SP-SDI8-P1-K-C	Input extension, 8 inputs, push-in terminal block, pluggable	R1.190.0060.0	1
<b>SP-CANopen</b> <b>SP-PROFIBUS-DP</b> <b>SP-EN-ETC</b> 	SP-CANopen	CANopen gateway	R1.190.0210.0	1
	SP-PROFIBUS-DP	PROFIBUS-DP gateway	R1.190.0190.0	1
	SP-EN-ETC	Ethercat gateway	R1.190.0160.0	1

## Accessories

	Name/type	Description	Art.No.	Std. Pack
<b>SP-COP-CARD1</b> 	SP-COP-CARD1	Memory-card for SP-COP	R1.190.1000.0	1
	<b>SP-CABLE-USB1</b> <b>SP-CABLE-ETH1</b> 	SP-CABLE-USB1	USB cable for SP-COP, 1.8 m	R1.190.1010.0
SP-CABLE-ETH1		Ethernet cable for SP-COP, 2 m	R1.190.1020.0	1
<b>SP-VISUAL-SET</b> 	SP-COP-STARTER-SET	Content: SP-COP2-EN-A, SP-COP-CARD1, SP-PLAN5+, SP-CABLE-USB1, SP-CABLE-ETH1	R1.190.1100.0	1
	SP-VISUAL-SET	Visualization set (touch panel 3.5" color, SP-CABLE4, software driver)	R1.190.0280.0	1
	SP-COVER	SD card slot cover for SP-COP modules	R1.190.1040.0	1
	WKFN 2,5 E/35 GO-URL	<b>fasis</b> multi-tier terminal with diode	56.703.8755.9	1
	APFN 2,5 E/35	End plate	07.312.7355.0	1

You will find additional information to all products in the safety technology range in our catalog "Safe System Solutions for Automation Technology"

Order no. 0860.1





wieland



**USA**  
**Wieland Electric Inc.**  
**North American Headquarters**  
2889 Brighton Road  
Oakville, Ontario L6H 6C9  
Phone +1 905 8298414  
Fax +1 905 829 413  
www.wielandinc.com



**CANADA**  
**Wieland Electric Inc.**  
**North American Headquarters**  
2889 Brighton Road  
Oakville, Ontario L6H 6C9  
Phone +1 905 8298414  
Fax +1 905 829 413  
www.wieland-electric.ca



**GREAT BRITAIN**  
**Wieland Electric Ltd.**  
Riverside Business Center,  
Walnut Tree Close  
GB Guildford/Surrey GU1 4UG  
Phone +44 1483 531213  
Fax +44 1483 505029  
sales.uk@wieland-electric.com  
www.wieland.co.uk



**FRANCE**  
**Wieland Electric SARL.**  
Le Cérame, Hall 6  
47, avenue des Genottes  
CS 48313,  
95803 Cergy-Pontoise Cedex  
Phone +33 1 30320707  
Fax +33 1 30320717  
info.france@wieland-electric.com  
www.wieland-electric.fr



**SPAIN**  
**Wieland Electric S.L.**  
C/ Maria Auxiliadora 2, barcos  
E-08017 Barcelona  
Phone +34 93 2523820  
Fax +34 93 2523825  
ventas@wieland-electric.com  
www.wieland-electric.es



**ITALY**  
**Wieland Electric S.r.l.**  
Via Edison, 209  
I-20019 Settimo Milanese  
Phone +39 02 48 916357  
Fax +39 02 48 920685  
info.italy@wieland-electric.com  
www.wieland-electric.it



**BELGIUM & GD LUXEMBOURG**  
**ATEM-Wieland Electric NV**  
Bedrijvenpark De Veert 4  
B-2830 Willebroek  
Phone +32 3 8661800  
Fax +32 3 8661828  
info.belgium@wieland-electric.com  
www.wieland-electric.be



**DENMARK**  
**Wieland Electric A/S**  
Vallørækken 26  
DK-4600 Køge  
Phone +45 70 266635  
Fax +45 70 266637  
sales.denmark@wieland-electric.com  
www.wieland-electric.dk



**SWITZERLAND**  
**Wieland Electric AG**  
Harzachstrasse 2b  
CH-8404 Winterthur  
Phone +41 52 2352100  
Fax +41 52 2352119  
info.swiss@wieland-electric.com  
www.wieland-electric.ch



**POLAND**  
**Wieland Electric Sp. z o.o.**  
Św. Antoniego 8  
62-080 Swadzim  
Phone +48 61 2225400  
Fax +48 61 8407166  
office@wieland-electric.pl  
www.wieland-electric.pl



**CHINA**  
**Wieland Electric Trading**  
Unit 2703 International Soho City  
889 Renmin Road,  
Huang Pu District  
PRC-Shanghai 200010  
Phone +86 21 63555833  
Fax +86 21 63550090  
info-shanghai@wieland-electric.com  
www.wieland-electric.cn



**JAPAN**  
**Wieland Electric Co, Ltd.**  
Nisso No. 16 Bldg. 7F  
3-8-8 Shin-Yokohama,  
Kohoku-ku  
Yokohama 222-0033  
Phone +81 45 473 5085  
Fax +81 45 470 5408  
info-japan@wieland-electric.com



**GERMANY**  
**Headquarters**  
**Wieland Electric GmbH**  
Brennerstraße 10 – 14  
96052 Bamberg, Germany  
Phone +49 951 9324-0  
Fax +49 951 9324-198  
info@wieland-electric.com  
www.wieland-electric.de

**Sales Partner:**  
**You can reach us worldwide in more than 70 countries.**  
**Find the contact address at: [www.wieland-electric.com](http://www.wieland-electric.com)**

Subject to technical modifications!  
**gesis®**, **RST®**, **GST®**, **GST18®**, **podis®**, **samos®** and **saris®**  
are registered trademarks of Wieland Electric GmbH

0881.1 MC 07/16

contacts  
are  
green.