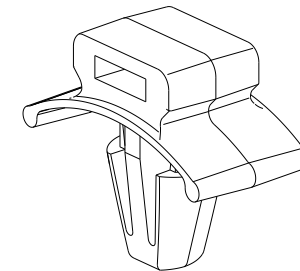
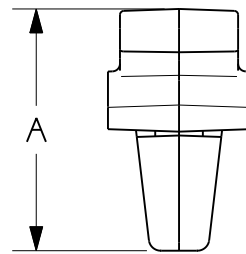
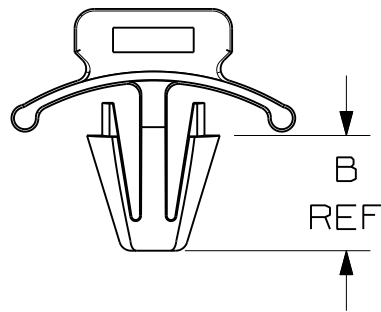
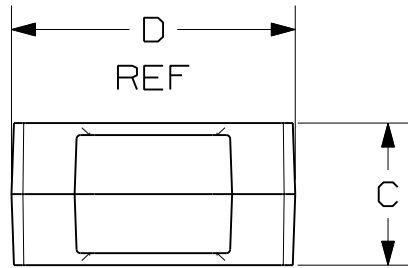


THIS COPY IS PROVIDED ON A RESTRICTED BASIS AND IS NOT TO BE USED IN ANY WAY DETRIMENTAL TO THE INTERESTS OF PANDUIT CORP.

| PANDUIT PART NO. | USE WITH THESE CABLE TIE CROSS-SECTIONS | DIMENSIONS    |                     |              |                      | WEIGHT lbs/100pcs (g) |
|------------------|---|---------------|---------------------|--------------|----------------------|-----------------------|
|                  |   | A             | B                   | C            | D                    |                       |
| PWMS-H25         | MINIATURE<br>INTERMEDIATE<br>STANDARD   | .62<br>(15.7) | .31<br>(8.0)<br>REF | .37<br>(9.3) | .71<br>(18.0)<br>REF | 0.13<br>(60)          |



NOTES:

- SEE WWW.PANDUIT.COM FOR PART NUMBER SUFFIX DESIGNATION FOR PACKAGE SIZE, MATERIAL AND COLOR.
- (\* ) DIMENSIONAL VARIANCE IS POSSIBLE DUE TO MOLDING PROCESS RELATED SINK MARKS.
- APPLICATION SPECIFICATION:  
HOLE DIAMETER: .229 (5.8) - .255 (6.5)  
PANEL THICKNESS: .105 (2.7) (MAX)

| REV | DATE     | BY  | CHK  | DESCRIPTION                          | ECN      | R | CUST | SUP |
|-----|----------|-----|------|--------------------------------------|----------|---|------|-----|
| 7   | 12/17/10 | BWG | MJVE | REVISED NOTE 1. MAT'L WAS NYLON 6/6. | GB0239EW | 7 | PBC  |     |

|   |  |
|---|--|
| DIMENSIONS IN BRACKETS ARE METRIC [ mm ]  |  |
| CAD FILENAME/LAYERS<br>10B015CG/00A_DC-GB0239EW_REV07   |  |
| <b>PANDUIT</b> CORP. TINLEY PARK, ILLINOIS  |  |
| PUSH WING MOUNT<br>PWMS-H25   |  |
| UNLESS OTHERWISE SPECIFIED,<br>DIMENSIONAL TOLERANCES ARE:<br>(.X) ±0.05 (1.3) (.XXX) ±0.010 (0.25)<br>(.XX) ±0.02 (0.5) ANGLES ±5° | UNLESS OTHERWISE SPECIFIED,<br>ALL DIMENSIONS ARE GIVEN<br>IN INCHES, THIRD ANGLE<br>PROJECTION. |
| DRAWN BY<br><b>CGSM</b>   | MAT'L:<br><b>NYLON</b>   |
| DATE<br><b>3-6-97</b>   | SCALE<br><b>2:1</b>  |
| CHK'D   | DRAWING NO.<br><b>GB0239EW</b>   |
|   | DWG<br>SIZE<br><b>A</b>  |