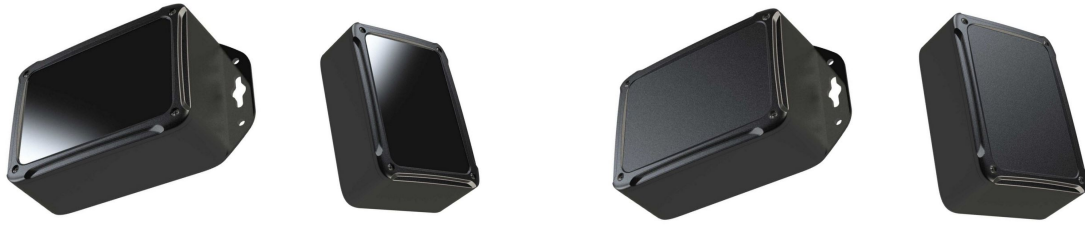


PW SERIES –UL94-5VA ABS Enclosure



Smooth Face Cover Option

Textured Face Cover Option

Ordering Information

Part Number Smooth Finish	Part Number Textured Finish	Part Number Smooth Finish with Mounting Brackets	Part Number Textured Finish with Mounting Brackets	Outside Length (in)	Outside Width (in)	Outside Depth (in)	Inside Length (in)	Inside Width (in)	Inside Depth (in)	Unit Weight (Lb)
PW-12846	PW-12846-T	PW-12846-MB	PW-12846-TMB	4.50	3.38	1.85	4.30	3.18	1.65	0.29
PW-12847	PW-12847-T	PW-12847-MB	PW-12847-TMB	5.25	3.75	1.97	5.05	3.55	1.77	0.35
PW-12848	PW-12848-T	PW-12848-MB	PW-12848-TMB	4.00	4.00	1.85	3.80	3.80	1.65	0.31
PW-12849	PW-12849-T	PW-12849-MB	PW-12849-TMB	6.00	4.38	1.97	5.80	4.18	1.77	0.46
PW-12850	PW-12850-T	PW-12850-MB	PW-12850-TMB	7.25	5.00	2.22	7.05	4.80	2.02	0.49

Priced, sold and packaged in quantities of one

Benefits and Features

- Made from black ABS plastic
- Meets both UL94-5VA and UL94-V0 flammability ratings
- Stylish rounded design
- PCB mounting bosses in base
- Plain or molded-on flanges for surface-mounting
- Thread forming cover screws directly into base
- 2 cover styles to choose from:
 - Smooth area on cover suitable for optional direct UV cured print
 - Textured area for mar-resistant finish
- Designed for indoor use

BUDIND.COM

Accessories

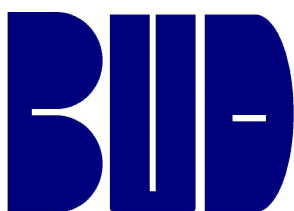
- 0.060" Aluminum internal mounting panel (PWX prefix)

Applications

- Controls
- GPS
- Wi-Fi and other connectivity

Availability

June 2020



Bud Industries, Inc.

4605 E. 355th Street
Willoughby, Ohio 44094

saleseast@budind.com
saleswest@budind.com

www.budind.com

BUD PW SERIES