

Single PCB terminal block - PTSPL-6/1-2X2 2,1 R32 - 1704836

Please be informed that the data shown in this PDF Document is generated from our Online Catalog. Please find the complete data in the user's documentation. Our General Terms of Use for Downloads are valid (<http://phoenixcontact.com/download>)



PCB terminal block for tin-plated stranded cables, e.g., type PV 1-F, nominal current: 41 A, 1-pos., connection method: spring-cage connection, mounting: THT/THR, user information on through hole reflow technology can be found at: combicon.com



Key Commercial Data

Packing unit	1 pc
Minimum order quantity	250 pc
Weight per Piece (excluding packing)	2.96 g
Custom tariff number	85369010
Country of origin	Germany

Technical data

Dimensions

Length of the solder pin	2.1 mm
Pin dimensions	0,6 x 1
Hole diameter	1.3 mm

General

Nominal current I_N	41 A
Nominal cross section	6 mm ²
Solder pin surface	Sn
Stripping length	15 mm

Connection data

Conductor cross section flexible min.	2.5 mm ²
Conductor cross section flexible max.	6 mm ²
Conductor cross section flexible, with ferrule without plastic sleeve min.	2.5 mm ² min.

Single PCB terminal block - PTSPL-6/1-2X2 2,1 R32 - 1704836

Technical data

Connection data

Conductor cross section flexible, with ferrule without plastic sleeve max.	6 mm ² max.
--	------------------------

Classifications

eCl@ss

eCl@ss 4.0	272607xx
eCl@ss 4.1	27260701
eCl@ss 5.0	27260701
eCl@ss 5.1	27141190
eCl@ss 6.0	27260704
eCl@ss 7.0	27440402
eCl@ss 8.0	27440401
eCl@ss 9.0	27440401

ETIM

ETIM 3.0	EC001121
ETIM 4.0	EC002643
ETIM 5.0	EC002643

UNSPSC

UNSPSC 6.01	30211810
UNSPSC 7.0901	39121409
UNSPSC 11	39121409
UNSPSC 12.01	39121409
UNSPSC 13.2	39121409

Approvals

Approvals

Approvals

cULus Recognized / EAC

Ex Approvals

Approvals submitted

Single PCB terminal block - PTSPL-6/1-2X2 2,1 R32 - 1704836

Approvals

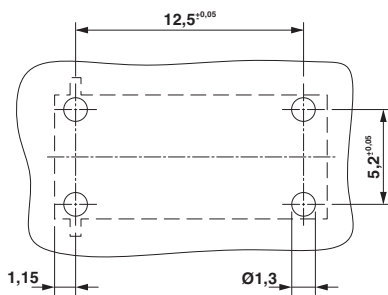
Approval details

cULus Recognized	
mm ² /AWG/kcmil	14-10
Nominal current I _N	30 A

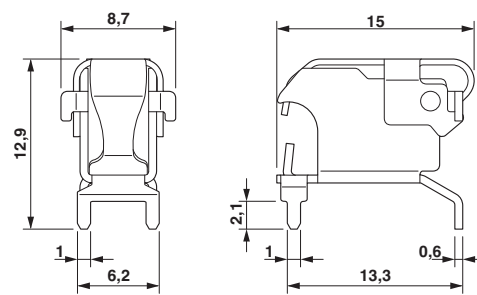
EAC

Drawings

Drilling diagram



Dimensional drawing



Diagram

