

Data Sheet

FT085xxVBFC

Page 1/5

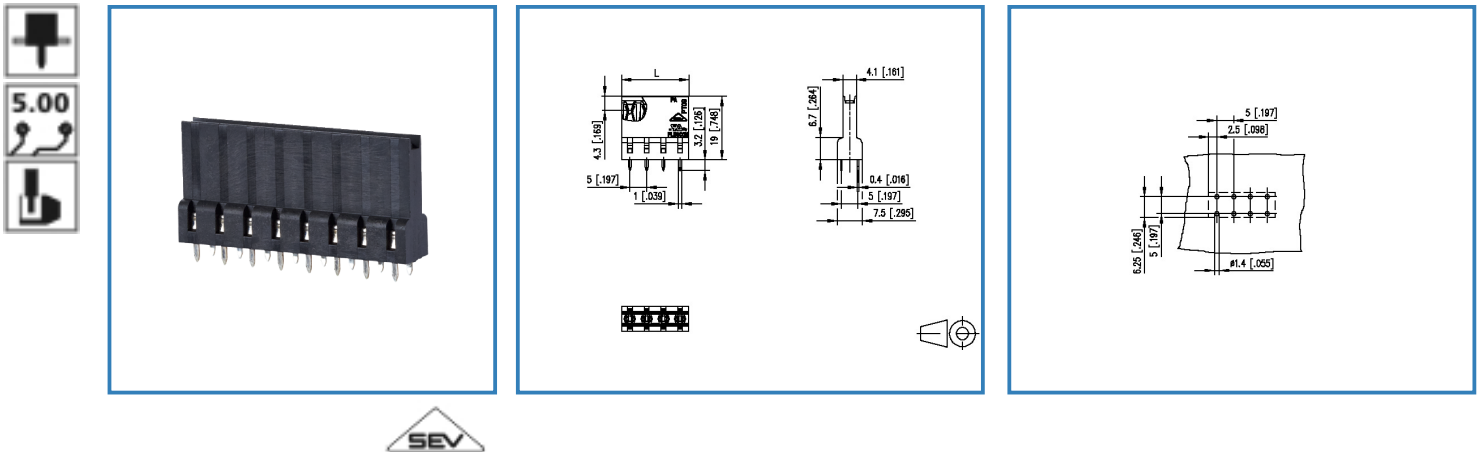
P/N

310261xx

xx=number of poles

2015/03/26

Illustration



see enlarged drawing at the end of the document

Product specification

- female connector, solderable, double solder pins
- centerline 5.00 mm, direction of connection vertical 0°
- fittable without loss of poles
- color black
- board-to-board connection with headers centerline 5.00 mm / 0.197 inches possible
- Connection data



6 A / 250 V / 4 kV / 3 / IEC 61984



Data Sheet

FT085xxVBFC

Technical Data

General Data

Solder pin length	3.2 mm		
min. number of poles	2		
max. number of poles	16		
Insulating material class	CTI 600		
clearance/creepage dist.	4 mm		
protection category	IP 20		
Overvoltage category	III	III	II
Pollution degree	3	2	2
Rated voltage	320 V	800 V	800 V
Rated test voltage	4 kV	4.0 kV	4 kV

Connection data



6 A / 250 V / 4 kV / 3 / IEC 61984

Material

insulating material	PA66
flammability class	V0
contact material	CuSn
contact surface	Sn

Climatic properties

upper limit temperature	105 °C
lower limit temperature	-40 °C

General

solderability	Acc. to JEDEC JESD22-B102E 245°C/5s
Tolerance	ISO 2768 -mH



Data Sheet

FT085xxVBFC

Page 3/5

P/N

310261xx

xx=number of poles

2015/03/26

Matching Part

P/N	Product name
310171	PR015xxVBHC Typ 017
310191	PT045xxVBEC Typ 019
310201	PT045xxVBBN Typ 020
310271	PR015xxVBVC Typ 027
310291	PT045xxHBEC Typ 029
310301	PT045xxHBBN Typ 030
310311	PT045xxHBVC Typ 031
310321 (on request)	PT045xxHBVN Typ 032
310391	PT055xxHBHC Typ 039



Data Sheet

FT085xxVBFC

Page 4/5

P/N

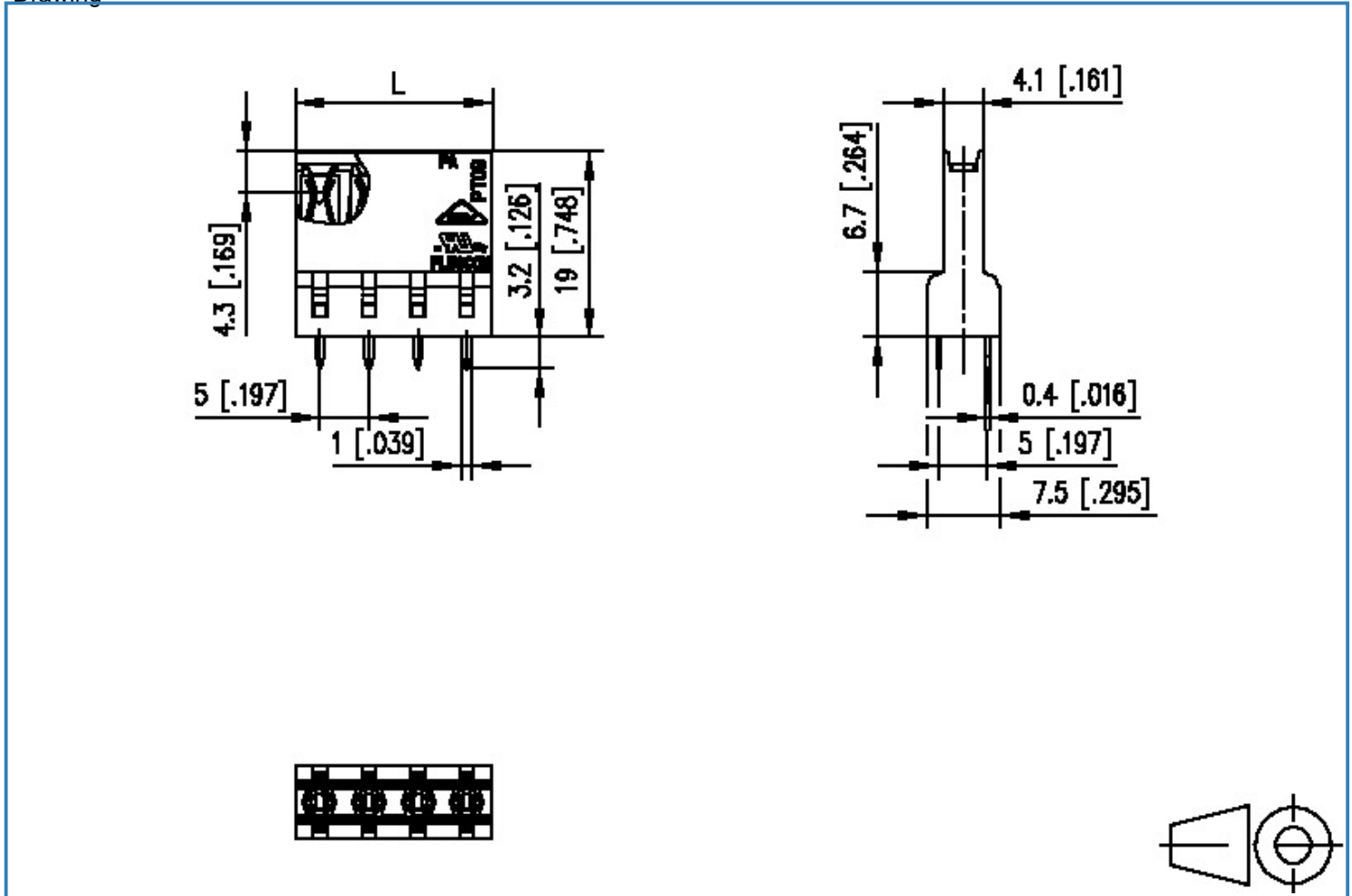
310261xx

xx=number of poles

2015/03/26

Illustration

Drawing



$L = (\text{pole size} - 1) \times \text{centerline} + 5 [0.197]$



Data Sheet

FT085xxVBFC

Page 5/5

P/N

310261xx

xx=number of poles

2015/03/26

PCB Layout

