

## Printed-circuit board connector - PSC 1,5/ 3-M - 1841857

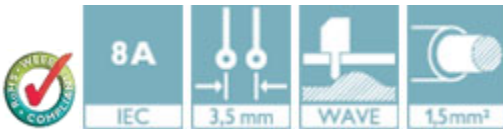
Please be informed that the data shown in this PDF Document is generated from our Online Catalog. Please find the complete data in the user's documentation. Our General Terms of Use for Downloads are valid (<http://phoenixcontact.com/download>)

Header, Nominal current: 8 A, Number of positions: 3, Pitch: 3.5 mm, Color: green, Contact surface: Tin, Mounting: Wave soldering



### Product Features

- Combination of MINI-COMBICON connectors and the good shielding properties and geometry of D-SUB connectors
- Can be used in standard D-SUB housing



### Key Commercial Data

Packing unit	1 pc
GTIN	 4 017918 111861
Weight per Piece (excluding packing)	6.72 g
Custom tariff number	85369010
Country of origin	Poland

### Technical data

#### Dimensions

Length	20.8 mm
Pitch	3.50 mm
Dimension a	7 mm
Constructional height	14 mm
Length of the solder pin	3.5 mm

#### General

Range of articles	PSC 1,5/..-M
Insulating material group	I

# Printed-circuit board connector - PSC 1,5/ 3-M - 1841857

## Technical data

### General

Rated voltage (III/3)	250 V
Connection in acc. with standard	EN-VDE
Nominal current I <sub>N</sub>	8 A
Insulating material	PA
Flammability rating according to UL 94	V0
Color	green
Number of positions	3

### Standards and Regulations

Connection in acc. with standard	EN-VDE
	CSA
Flammability rating according to UL 94	V0

## Classifications

### eCl@ss

eCl@ss 4.0	272607xx
eCl@ss 4.1	27260701
eCl@ss 5.0	27260701
eCl@ss 5.1	27260701
eCl@ss 6.0	27260704
eCl@ss 7.0	27440402
eCl@ss 8.0	27440402
eCl@ss 9.0	27440402

### ETIM

ETIM 3.0	EC001121
ETIM 4.0	EC002637
ETIM 5.0	EC002637

### UNSPSC

UNSPSC 6.01	30211810
UNSPSC 7.0901	39121409
UNSPSC 11	39121409
UNSPSC 12.01	39121409
UNSPSC 13.2	39121409

# Printed-circuit board connector - PSC 1,5/ 3-M - 1841857

## Approvals

### Approvals

---

#### Approvals

CSA / EAC / cULus Recognized / EAC

---

#### Ex Approvals

---

#### Approvals submitted

---

## Approval details

CSA 			
	B	D	
	Nominal current I <sub>N</sub>	8 A	8 A
	Nominal voltage U <sub>N</sub>	300 V	300 V

EAC
-----

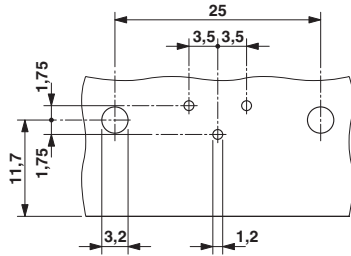
cULus Recognized		
	B	D
Nominal current I <sub>N</sub>	8 A	8 A
Nominal voltage U <sub>N</sub>	300 V	300 V

EAC
-----

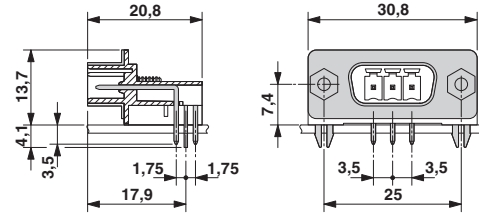
## Drawings

# Printed-circuit board connector - PSC 1,5/ 3-M - 1841857

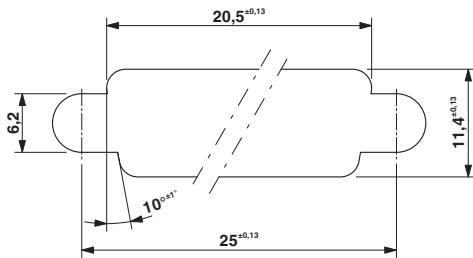
Drilling diagram



Dimensional drawing

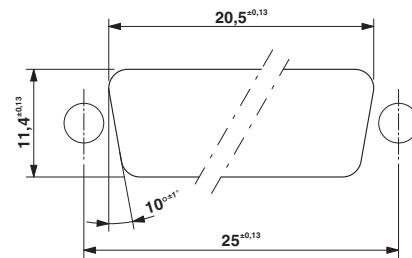


Dimensional drawing



Panel cutout in acc. with DIN 41652-3 for walls up to 4.5 mm thick

Dimensional drawing



Panel cutout in acc. with DIN 41652-3 for wall up to 2.0 mm thick