



# The PROFESSIONAL STANDARD



## Our Edge

### PLS manufactures the highest quality layout tools for the professional contractor.

We are dedicated to designing rugged and accurate laser tools for a lifetime of increased productivity and profit.

Fast, accurate and portable, PLS lasers save time and money versus traditional layout methods using bubble vials, plumb bobs or complex measurements.

Compare the advantages of using a PLS laser to traditional methods you now employ. When comparing PLS laser tools look for these quality features:

1. Beam quality will be bright, thin and crisp
2. Drop tested with water and dust Ingress Protection (IP)
3. Designed for the professional contractor with self-leveling technology

## Our History

What sets PLS apart from the rest? Built by contractors for contractors, PLS tools were developed out of necessity by professionals with over 50 years of experience in commercial and residential interior and exterior layout. PLS founders were contractors first before becoming manufacturers of the finest laser alignment tools in the world.

## Find us on PLSLaser.com

### Visit the PLS Website for:

- Product tutorials
- Upcoming PLS events
- Product manuals
- Where to buy

## Follow PLS!



@ PLSLaser



@ PLSLaser



[www.facebook.com/PacificLaserSystems/](http://www.facebook.com/PacificLaserSystems/)



PLS 3G



PLS 5G



PLS 180G



PLS 6G



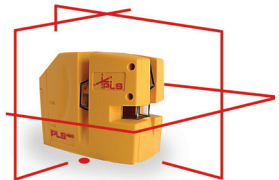
PLS H2



PLS HV2G



PLS 360



PLS 480



PLS FT 90



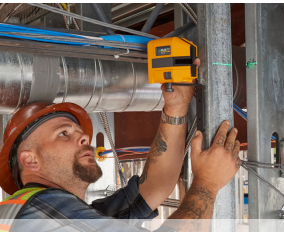
PLS HVL 100

# Application guide

	Point lasers		Line lasers	
Applications	PLS 3	PLS 5	PLS 180	PLS 360
Framing	•	•	•	
Finish carpentry	•	•	•	•
Foundations		•	•	•
Floor and tile			•	
Acoustic ceiling			•	•
Painting			•	•
Electrical	•	•	•	
HVAC	•	•	•	
Window and glass	•	•	•	
Excavation				•



	Combo lasers			Rotary lasers	
FT90	PLS 6	PLS 480	HVL 100	H2	HV2
	•	•	•	•	•
	•	•	•		
	•	•	•	•	•
•	•		•		
	•		•	•	•
	•		•		
	•		•		
	•	•	•		
	•	•	•	•	•
				•	•



# Point lasers

## PLS 3R, 3G

### 3-point laser

This self-leveling three-point red and green laser level allows for fast, accurate layout of plumb reference points and is excellent for steel stud framing, HVAC installation, electrical installation, and residential construction.

- In red and green
- Quick plumb layout and installation
- Pendulum lock



PLS 3R



PLS 3G

Class II Laser Product

PLS Part #	Description
PLS 3R Z	3-point red laser bare tool
	<i>Included:</i> PLS 3R laser level, PLS canvas pouch, PLS BP5 alkaline battery pack
PLS 3R KIT	3-Point Red Laser Kit
	<i>Included:</i> PLS 3R laser level, PLS canvas pouch, PLS BP5 alkaline battery pack, PLS FS Floor Stand, PLS MLB Magnetic L-Bracket, PLS RRT4 Red Reflective Target
PLS 3G Z	3-point green laser bare tool
	<i>Included:</i> PLS 3G laser level, PLS canvas pouch, PLS BP5 alkaline battery pack
PLS 3G KIT	3-point green laser kit
	<i>Included:</i> PLS 3G laser level, PLS canvas pouch, PLS BP5 alkaline battery pack, PLS FS Floor Stand, PLS MLB Magnetic L-Bracket, PLS GRT4 Green Reflective Target

## Specifications

Accuracy	≤ 1/8 in at 30 ft ( ≤ 3 mm @ 10 m )
Self-leveling range	4°
Power supply	BP5 (3xAA)
Operating time	+ 30 hours continuous (red only)
Dimensions	4.6 in x 2.5 in x 4.1 in (116 mm x 64 mm x 104 mm)
Weight	1.3 lbs (0.6 kg)
Drop test	3 ft (1 m)
Water and dust protection	IP54
Warranty	Three year best-in-class warranty

## Compatible accessories

PLS Part #	Description
PLS-60573	Canvas pouch
PLS FS	Floor stand for PLS 3, 5, 6
PLS MLB	Magnetic L-bracket, PLS 3, 5, 6, 180
PLS BP5	BP5 alkaline battery pack
PLS RRT4	Red magnetic reflective target
PLS GRT4	Green magnetic reflective target
PLS C18	Laser level tool box



# Point lasers

## PLS 5R, 5G

### 5-point laser

The PLS 5 is a self-leveling five-point red and green laser level (plumb and square horizontal and vertical points) equipped for plumb, level, and square applications.

- In red and green
- Quick plumb layout and installation
- Pendulum lock



PLS 5R



PLS 5G

Class II Laser Product

PLS Part #	Description
PLS 5R Z	5-point red laser bare tool <i>Included:</i> PLS 5R laser level, PLS canvas pouch, PLS BP5 alkaline battery pack
PLS 5R KIT	5-point red laser kit <i>Included:</i> PLS 5R laser level, PLS canvas pouch, PLS BP5 alkaline battery pack, PLS FS floor stand, PLS MLB magnetic L-bracket, PLS-10090 Pendulum Target, PLS RRT4 red reflective target
PLS 5G Z	5-point green laser bare tool <i>Included:</i> PLS 5G laser level, PLS canvas pouch, PLS BP5 alkaline battery pack
PLS 5G KIT	5-point green laser kit <i>Included:</i> PLS 5G laser level, PLS canvas pouch, PLS BP5 alkaline battery pack, PLS FS floor stand, PLS MLB magnetic L-bracket, PLS-10090 Pendulum Target, PLS GRT4 green reflective target



<b>Specification</b>	
Accuracy	≤ 1/8 in at 30 ft ( ≤ 3 mm @ 10 m )
Self-leveling range	4°
Power supply	BP5 (3xAA)
Operating time	+ 30 hours continuous (red only)
Dimensions	4.6 in x 2.5 in x 4.1 in (116 mm x 64 mm x 104 mm)
Weight	1.3 lbs (0.6 kg)
Drop test	3 ft (1 m)
Water and dust protection	IP54
Warranty	Three year best-in-class warranty

## Compatible accessories

<b>PLS Part #</b>	<b>Description</b>
PLS-60573	Canvas pouch
PLS FS	Floor stand for PLS 3, 5, 6
PLS MLB	Magnetic L-bracket, PLS 3, 5, 6, 180
PLS BP5	BP5 alkaline battery pack
PLS RRT4	Red magnetic reflective target
PLS GRT4	Green magnetic reflective target
PLS C18	Laser level tool box
PLS-10090	Pendulum layout target

## PLS 180R, 180G

### Cross line laser

This self-leveling cross line laser level in both red and green is designed for multiple applications including framing, acoustic ceiling installation, tile installation, and other residential and commercial construction tasks.

- In red and green
- Quick layout and installation projects
- Pendulum lock



PLS 180R



PLS 180G

Class II Laser Product

PLS Part #	Description
PLS 180R Z	Cross line red laser bare tool
	<i>Included:</i> PLS 180R laser level, PLS canvas pouch, PLS BP5 alkaline battery pack
PLS 180R KIT	Cross line red laser kit
	<i>Included:</i> PLS 180R laser level, PLS canvas pouch, PLS BP5 alkaline battery pack, PLS UB9 universal ceiling and wall bracket, PLS MLB magnetic L-bracket, PLS RRT4 red reflective target
PLS 180R SYS	Cross line red laser system
	<i>Included:</i> PLS 180R laser level, PLS canvas pouch, PLS BP5 alkaline battery pack, PLS SLD RED laser line detector, PLS 60520 SLD clamp, PLS UB9 universal ceiling and wall bracket, PLS MLB magnetic L-bracket, PLS RRT4 red reflective target
PLS 180G Z	Cross line green laser bare tool
	<i>Included:</i> PLS 180G laser level, PLS canvas pouch, PLS BP5 alkaline battery pack

PLS Part #	Description
PLS 180G KIT	Cross line green laser kit
	<i>Included:</i> PLS 180G laser level, PLS canvas pouch, PLS BP5 alkaline battery pack, PLS UB9 universal ceiling and wall bracket, PLS MLB magnetic L-bracket, PLS GRT4 green reflective target
PLS 180G SYS	Cross line green laser system
	<i>Included:</i> PLS 180G laser level, PLS canvas pouch, PLS BP5 alkaline battery pack, PLS SLD GREEN laser line detector, PLS 60520 SLD clamp, PLS UB9 universal ceiling and wall bracket, PLS MLB magnetic L-bracket, PLS GRT4 green reflective target

Specification	
Accuracy	≤ 1/8 in at 30 ft ( ≤ 3 mm @ 10 m )
Self-leveling range	4°
Power supply	BP5 (3xAA)
Horizontal fan angle	≥ 180°
Vertical fan angle	≥ 130°
Operating time	+ 30 hours continuous (red only)
Dimensions	4.6 in x 2.5 in x 4.1 in (116 mm x 64 mm x 104 mm)
Weight	1.3 lbs (0.6 kg)
Drop test	3 ft (1 m)
Water and dust protection	IP54
Warranty	Three year best-in-class warranty

## Compatible accessories

PLS Part #	Description
PLS-60573	Canvas pouch, PLS 180, 3, 5, 6
PLS MLB	Magnetic L-bracket, PLS 3, 5, 6, 180
PLS BP5	BP5 Alkaline battery pack
PLS RRT4	Red magnetic reflective target
PLS GRT4	Green magnetic reflective target
PLS C18	Laser level tool box
PLS UB9	Universal ceiling and wall bracket

## PLS 360

### 360-degree interior-exterior laser level

Fully self-leveling, the PLS 360 provides you with a 360-degree horizontal line of reference.



Class II Laser Product

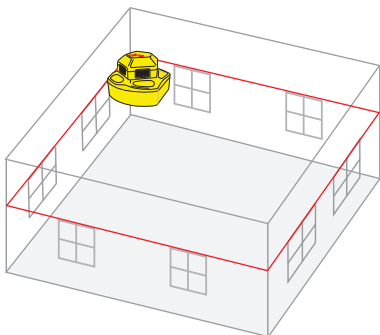
PLS Part #	Description
PLS-60526	PLS 360 tool <i>Included:</i> PLS 360 tool, PLS-6200 wall and ceiling bracket
PLS-60536	PLS 360 system <i>Included:</i> PLS 360 tool, PLS-6200 wall and ceiling bracket, PLS SLD RED detector with clamp
PLS-60537	PLS 360 kit <i>Included:</i> PLS 360 tool, PLS-6200 wall and ceiling bracket, PLS SLD RED detector with clamp, PLS-20512 tripod with 1/4-20" adapter, PLS-21011 16-ft grade rod

### Specification

Accuracy	≤ 1/8 in at 100 ft (≤ 3 mm at 30 m)
Self-leveling range	6°
Power supply	3xD batteries
Dimensions	4.6 in x 2.5 in x 4.1 in
Weight	2 lb

### Compatible accessories

PLS Part #	Description
PLS-6200	PLS 360 ceiling/wall bracket
PLS SLD RED	SLD Red Detector with bracket
PLS-20669	PLS 360 plastic carrying case



## PLS FT 90

### Square layout for the professional tile and floor contractor

Use the PLS FT 90 for fast, tile square layout. Made of cast aluminum, the PLS FT 90 is durable and able to provide the professional tile contractor with superior accuracy and clarity. Good for short and long range interior floor tile projects.

- Setting square on slab
- Floor-level cross line
- Easy ceramic tile layout
- Substrate



Class II Laser Product

PLS Part #	Description
PLS-60567	PLS FT 90
	<i>Included:</i> PLS FT 90 tool, red reflective targets

## Specification

Square accuracy	± 1/16 in @ 20 ft (± 2 mm @ 6 m)
Working range	± 65 ft (20 m)
Leveling	Fixed-base— not self-leveling
Operating time	10 hours continuous use
Dimensions	8 in x 2.4 in x 2.8 in
Weight	2.4 lbs (1.09 kg)
Power supply	3AA batteries
Warranty	Three year best-in-class warranty

## Accessories

PLS Part #	Description
PLS-21010	PLS FT 90 plastic carrying case
RRT4	Red reflective target

# Combo lasers

## PLS 6R, 6G

### Cross line with 4-point lasers

Plumb, level, and square with one tool. This professional self-leveling combination point and cross line laser level in red and green includes vertical and horizontal modes with lines and points combined.

- In red and green
- Plumb, level, and square with one tool
- Pendulum lock



PLS 6R



PLS 6G

Class II Laser Product

PLS Part #	Description
PLS 6R Z	Cross line and point red laser bare tool <i>Included:</i> PLS 6R laser level, PLS canvas pouch, PLS BP5 alkaline battery pack
PLS 6R KIT	Cross line and point red laser kit <i>Included:</i> PLS 6R laser level, PLS canvas pouch, PLS BP5 alkaline battery pack, PLS UB9 universal ceiling and wall bracket, PLS FS floor stand, PLS MLB magnetic L-bracket, PLS RRT4 red reflective target
PLS 6R SYS	Cross line and point red laser system <i>Included:</i> PLS 6R laser level, PLS canvas pouch, PLS BP5 alkaline battery pack, PLS SLD RED laser line detector, PLS 60520 SLD clamp, PLS UB9 universal ceiling and wall bracket, PLS FS floor stand, PLS MLB magnetic L-bracket, PLS RRT4 red reflective target
PLS 6G Z	Cross line and point green bare tool <i>Included:</i> PLS 6G laser level, PLS canvas pouch, PLS BP5 alkaline battery pack
PLS 6G KIT	Cross line and point green laser kit <i>Included:</i> PLS 6G laser level, PLS canvas pouch, PLS BP5 alkaline battery pack, PLS UB9 universal ceiling and wall bracket, PLS FS floor stand, PLS MLB magnetic L-bracket, PLS GRT4 green reflective target



PLS Part #	Description
PLS 6G SYS	Cross line and point green laser system
	<i>Included:</i> PLS 6G laser level, PLS canvas pouch, PLS BP5 alkaline battery pack, PLS SLD GREEN laser line detector, PLS SLD clamp, PLS UB9 universal ceiling and wall bracket, PLS FS floor stand, PLS MLB magnetic L-bracket, PLS GRT4 green reflective target

Specification	
Accuracy	≤ 1/8 in at 30 ft ( ≤ 3 mm @ 10 m )
Self-leveling range	4°
Power supply	BP5 (3xAA)
Operating time	+ 30 hours continuous (red only)
Dimensions	4.6 in x 2.5 in x 4.1 in (116 mm x 64 mm x 104 mm)
Weight	1.3 lbs (0.6 kg)
Drop test	3 ft (1 m)
Water and dust protection	IP54
Warranty	Three year best-in-class warranty

## Compatible accessories

PLS Part #	Description
PLS-60573	Canvas pouch, PLS 180, 3, 5, 6
PLS FS	Floor stand for PLS 3, 5, 6
PLS MLB	Magnetic L-bracket, PLS 3, 5, 6, 180
PLS BP5	BP5 alkaline battery pack
PLS RRT4	Red magnetic reflective target
PLS GRT4	Green magnetic reflective target
PLS C18	Laser level tool box
PLS UB9	Universal ceiling/wall bracket
PLS SLD RED	Red SLD detector
PLS SLD GREEN	Green SLD detector

## PLS 480 Tool

### Square and horizontal layout with plumb down

Self-leveling interior-exterior square and horizontal laser lines. Ideal for foundations, walls, on slab and more.

- 180-degree laser lines with a plumb down point
- Giving true plumb level and square reference lines with overhead intersection
- The system and kit include the Universal Tripod Mount Adaptor for attachment to foundation boards or tripods



Class II Laser Product

PLS Part #	Description
PLS-60611	<p>PLS 480 tool</p> <p><i>Included:</i> PLS 480 Tool, PLS-60597 canvas pouch, PLS-20295 magnetic L-bracket, PLS-60610 floor stand, PLS-308 red reflective floor target</p>
PLS-60612	<p>PLS 480 system</p> <p><i>Included:</i> PLS 480 tool, PLS-60597 canvas pouch, PLS-20295 magnetic L-bracket, PLS-60610 floor stand, PLS-308 red reflective floor target, PLS-21114 universal tripod adapter, PLS SLD detector with clamp</p>
PLS-60613	<p>PLS 480 kit</p> <p><i>Included:</i> PLS 480 tool, PLS-60597 canvas pouch, PLS-20295 magnetic L-bracket, PLS-60610 floor stand, PLS-308 red reflective floor target, PLS-21114 universal tripod adapter, PLS SLD detector with clamp, PLS-20512 tripod with 1/4-20" adapter, PLS-21011 16-ft grade rod</p>

<b>Specification</b>	
Cross line accuracy	± 1/8 in @ 30 ft (3 mm @ 18 m)
Plumb down	± 1/8 in @ 20 ft (6 mm @ 6 m)
Leveling range	6°
Working range	± 200 ft (61 m) outdoor with detector
Operating time	± 25 hrs continuous use with horizontal beam ± 15 hrs continuous use with square beam
Dimensions	5.6 in x 4.6 in x 2.9 in
Power supply	3xAA batteries
Warranty	Three year best-in-class warranty

## Compatible accessories

<b>PLS Part #</b>	<b>Description</b>
PLS-60597	Canvas pouch, PLS 480
PLS-60610	Floor stand for PLS 480
PLS-20295	Magnetic L-bracket, HVL-100, PLS 480
PLS-21114	PLS universal base tripod adapter
PLS SLD RED	SLD red detector with bracket
PLS RRT4	Red magnetic reflective target
PLS-60609	PLS 480 plastic carrying case

# Combo lasers

## HVL 100

### Multi-function laser

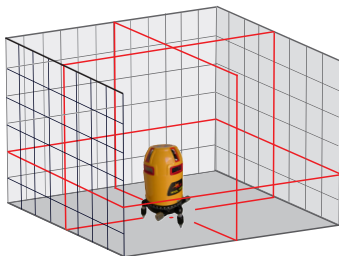
The HVL 100 line laser tool is fully self-leveling with horizontal and vertical lines for multiple applications.

- Two vertical lines with 360-degree horizontal and down point laser
- Fully self-leveling
- Servo-motor controlled for increased accuracy and stability



Class II Laser Product

PLS Part #	Description
PLS-60560	PLS HVL 100 tool
	<i>Included:</i> HVL 100 tool, PLS-60502 ceiling/wall bracket, NiMH AA batteries with charger
PLS-60561	PLS HVL 100 system
	<i>Included:</i> HVL 100 tool, PLS-60502 ceiling/wall bracket, NiMH AA batteries with charger, PLS SLD detector with SLD, reflective target



## Specification

Accuracy	± 1/8 in @ 60 ft (± 3 mm @ 18 m)
Range	100 ft (30 m) with optional SLD receiver
Self-leveling range	± 4°
Dimensions	8 in x 3.8 in x 11.5 in
Weight	4 lbs, 6 oz (2 kg) including batteries
Power supply	4xAA or 4 rechargeable Ni-MH batteries
Warranty	Three year best-in-class warranty

## Compatible accessories

PLS Part #	Description
PLS-20963	HVL 100 plastic carrying case
PLS-20985	PLS HVL100 battery pack and charging station
PLS-20295	Magnetic L-bracket, HVL-100, PLS 480
PLS RRT4	Red magnetic reflective target
PLS SLD RED	PLS Red SLD Detector
PLS-60502	Ceiling and wall bracket



# Rotary lasers

## PLS H2

### Horizontal-only rotary laser

The H2 laser is a horizontal-only rotary laser designed for interior and exterior projects and offers a simple one-button operation.

- One-button foundation or ground leveling
- Ideal for concrete or suspended ceilings
- Easy-to-use ergonomic grips



Class II Laser Product

PLS Part #	Description
PLS H2 Z	Horizontal red rotary laser bare tool
	<i>Included:</i> PLS H2 rotary laser level, PLS BP10 alkaline battery tray
PLS H2 SYS	Horizontal red rotary laser system
	<i>Included:</i> PLS H2 rotary laser level, PLS BP10 alkaline battery tray, PLS RBP10 NiMH rechargeable battery tray with BC20 universal charging cord, PLS XLD rotary laser detector, PLS XLD clamp, PLS RRT4 red reflective target
PLS H2 KIT	Horizontal red rotary laser kit
	<i>Included:</i> PLS H2 rotary laser level, PLS BP10 alkaline battery tray, PLS RBP10 NiMH rechargeable battery tray with BC20 universal charging cord, PLS XLD rotary laser detector, PLS XLD clamp, PLS RRT4 red reflective target, PLS TPOD500 elevator tripod, PLS GR16 grade rod

## Specifications

Accuracy	≤ 3/32 in at 100 ft (2.4 mm at 30 m)
Working range	Radius ± 1000 ft (304 m) with detector
Self-leveling range	± 5°
Dimensions	8 in x 7 in x 6 in
Weight	4.7 lbs (2.1 kg) unit only
Power supply	4xD Alkaline or NiMH rechargeable pack
Dust and water protection	IP67
Drop test	3 ft (1 m)
Warranty	Three year best-in-class warranty

## Compatible accessories

PLS Part #	Description
PLS RRT4	Red magnetic reflective target
PLS RC2	Rotary laser remote control
PLS XLD	Rotary laser detector with clamp
PLS XLD CLAMP	Rotary detector clamp
PLS C19	Rotary laser carrying case
PLS BP10	Rotary alkaline battery for H2, HV2
PLS RBP10	Rechargeable battery for H2, HV2
PLS BC20	Charging cord for PLS RBP10
PLS WCB10	Rotary wall and ceiling mount
PLS GR16	Grade rod with US and metric
PLS TPOD500	Elevating tripod



# Rotary lasers

## PLS HV2R, HV2G

### Horizontal/vertical rotary

The HV2R and HV2G rotary laser level emits a self-leveling horizontal laser plane and a self-leveling vertical laser plane with a simultaneous 90-degree split beam.



HV2R



HV2G

- Available in red or green
- Manual slope
- Up dot for alignment tasks

Class II Laser Product

PLS Part #	Description
PLS HV2R Z	Manual slope red rotary laser bare tool
	<i>Included:</i> PLS HV2R rotary laser level, PLS BP10 alkaline battery tray
PLS HV2R SYS	Manual slope red rotary laser system
	<i>Included:</i> PLS HV2R rotary laser level, PLS BP10 alkaline battery tray, PLS RBP10 NiMH rechargeable battery tray with BC20 universal charging cord, PLS RC2 Remote Control, PLS XLD Rotary Laser Detector, PLS XLD Clamp, PLS WCB10 Rotary Wall and Ceiling Mount, PLS RRT4 Red Reflective Target
PLS HV2R KIT	Manual slope red rotary laser kit
	<i>Included:</i> PLS HV2R rotary laser level, PLS BP10 alkaline battery tray, PLS RBP10 NiMH rechargeable battery tray with BC20 universal charging cord, PLS RC2 Remote Control, PLS XLD Rotary Laser Detector, PLS XLD Clamp, PLS WCB10 Rotary Wall and Ceiling Mount, PLS RRT4 Red Reflective Target, PLS TPOD500 Elevator Tripod, PLS GR16 Grade Rod
PLS HV2G Z	Manual slope green rotary laser bare tool
	<i>Included:</i> PLS HV2G rotary laser level, PLS BP10 alkaline battery tray



PLS Part #	Description
PLS HV2G SYS	Manual slope green rotary laser system
	<i>Included:</i> PLS HV2G rotary laser level, PLS BP10 alkaline battery tray, PLS RBP10 NiMH rechargeable battery tray with BC20 universal charging cord, PLS RC2 Remote Control, PLS XLD Rotary Laser Detector, PLS XLD Clamp, PLS WCB10 Rotary Wall and Ceiling Mount, PLS GRT4 Green Reflective Target
PLS HV2G KIT	Manual slope green rotary laser kit
	<i>Included:</i> PLS HV2G rotary laser level, PLS BP10 alkaline battery tray, PLS RBP10 NiMH rechargeable battery tray with BC20 universal charging cord, PLS RC2 Remote Control, PLS XLD Rotary Laser Detector, PLS XLD Clamp, PLS WCB10 Rotary Wall and Ceiling Mount, PLS GRT4 Green Reflective Target, PLS TPOD500 Elevator Tripod, PLS GR16 Grade Rod

### Specifications

Accuracy	≤ 3/32 in at 100 ft (2.4 mm at 30 m)
Working range	Radius ± 1000 ft (304 m) with detector
Self-leveling range	± 5°
Manual slope range	± 5°
Dimensions	8 in x 7 in x 6 in
Weight	4.7 lbs (2.1 kg) unit only
Power supply	3xD Alkaline or NiMH rechargeable pack
Dust and water protection	IP67
Drop test	3 ft (1 m)
Warranty	Three year best-in-class warranty

### Compatible accessories

PLS Part #	Description
PLS RRT4	Red magnetic reflective target
PLS RC2	Rotary laser remote control
PLS XLD	Rotary laser detector with clamp
PLS XLD CLAMP	Rotary detector clamp
PLS C19	Rotary laser carrying case
PLS BP10	Rotary alkaline battery for H2, HV2
PLS RBP10	Rechargeable battery for H2, HV2
PLS BC20	Charging cord for PLS
PLS WCB10	Rotary wall and ceiling mount
PLS GR16	Grade rod with US and metric
PLS TPOD500	Elevating tripod

# Accessories

## Designed to increase the utility of your PLS laser alignment tools

Your PLS laser will include accessories that help you get the most value from your purchase.

Replacement or additional accessories are available through your authorized PLS dealer.

## Detectors

PLS Part #	Description
PLS-60520	PLS SLD detector clamp <i>Compatible with:</i> PLS SLD RED; PLS SLD GREEN; PLS-60533; PLS-60618
PLS SLD RED	SLD red detector with clamp <i>Compatible with:</i> PLS 6R; PLS 180R; PLS 360; PLS 480; HVL 100; PLS 180 (former versions)
PLS SLD GREEN	SLD green detector with clamp <i>Compatible with:</i> PLS 6G; PLS 180G; PLS 180 Green (former versions)
PLS XLD	Rotary laser detector with clamp <i>Compatible with:</i> PLS H2; PLS HV2R; PLS HV2G; PLS HR1000; PLS HVR505R; PLS HVR505G; PLS HDR1000
PLS XLD CLAMP	Rotary detector clamp <i>Compatible with:</i> PLS XLD



PLS SLD RED



PLS SLD GREEN



**PLS-20512**  
5/8-11-Thread exterior tripod with 1/4-20 adapter



**PLS-20513**  
Telescoping tripod

## Tripods and grade rods

PLS Part #	Description
PLS-20351	5/8-11" to 1/4-20" thread adapter
	<i>Compatible with:</i> all 5/8-11" thread tripods
PLS-20512	5/8-11" thread exterior tripod with 1/4-20" adapter
	<i>Compatible with:</i> all 5/8-11" or 1/4-20" thread laser levels or devices
PLS-20513	9'6" telescoping tripod - 5/8-11" thread with 1/4-20" adapter
	<i>Compatible with:</i> all 5/8-11" or 1/4-20" thread laser levels or devices
PLS GR16	16' Grade Rod with US and Metric
	<i>Compatible with:</i> PLS-60520; PLS XLD CLAMP; PLS-20850
PLS TPOD500	9.75' telescoping tripod. 5/8-11" thread
	<i>Compatible with:</i> PLS H2; PLS HV2R; PLS HV2G; PLS HR1000; PLS HVR505R; PLS HVR505G; PLS HDR1000

## Batteries and remotes

PLS Part #	Description
PLS-20972	PLS HVL100 charger, type A US
	<i>Compatible with:</i> PLS-20985
PLS-20985	PLS HVL100 battery pack and charging station
	<i>Compatible with:</i> PLS HVL 100
PLS BP5	BP5 alkaline battery pack
	<i>Compatible with:</i> PLS 3R; PLS 3G, PLS 5R; PLS 5G; PLS 6R; PLS 6G; PLS 180R; PLS 180G
PLS BP10	Rotary alkaline battery for H2, HV2
	<i>Compatible with:</i> PLS H2; PLS HV2R; PLS HV2G
PLS RBP10	Rechargeable battery for H2, HV2
	<i>Compatible with:</i> PLS H2; PLS HV2R; PLS HV2G
PLS BC20	Charging cord for PLS RBP10
	<i>Compatible with:</i> PLS RBP10
PLS RC2	Rotary laser remote control
	<i>Compatible with:</i> PLS HV2R; PLS HV2G

## Floor stands, brackets, and adapters

PLS Part #	Description
PLS-20295	PLS magnetic wall bracket (short) <i>Compatible with:</i> PLS 3, PLS 4, PLS 5, PLS 180 (old versions); PLS 360, PLS 480
PLS-21114	PLS universal base tripod adapter <i>Compatible with:</i> PLS 480
PLS-60502	PLS rotary laser ceiling/wall bracket <i>Compatible with:</i> HVL 100; PLS HR1000; PLS HVR505R; PLS HVR505G; PLS HDR1000
PLS-60610	PLS 480 floor stand <i>Compatible with:</i> PLS 480
PLS-6200	PLS 360 ceiling/wall Bracket <i>Compatible with:</i> PLS 360 and most 1/4-20" thread handheld laser levels
PLS FS	Floor stand for PLS 3, 5, 6 <i>Compatible with:</i> all PLS 3, 5 and 6 models
PLS MLB	Magnetic L-bracket <i>Compatible with:</i> PLS 3, 5, 6, 180
PLS UB9	UB9 universal ceiling/wall bracket <i>Requires:</i> PLS-20295; PLS-21025; or PLS MLB
PLS WCB10	Rotary wall and ceiling mount <i>Compatible with:</i> HVL 100; PLS H2; PLS HV2R; PLS HV2G; PLS HR1000; PLS HVR505R; PLS HVR505G; PLS HDR1000



**PLS-21114**  
PLS universal base tripod adapter



**PLS UB9**  
UB9 universal ceiling/wall bracket



**PLS-6200**  
PLS 360 Ceiling/wall bracket

## Carrying cases and pouches

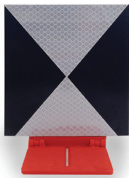
PLS Part #	Description
PLS C18	PLS toolbox <i>Compatible with:</i> PLS 3R; PLS 3G; PLS 5R; PLS 5G; PLS 6R; PLS 6G; PLS 180R; PLS 180G
PLS C19	Rotary laser carrying case <i>Compatible with:</i> PLS H2; PLS HV2R; PLS HV2G
PLS-20669	PLS 360 plastic carrying case <i>Compatible with:</i> PLS 360
PLS-60609	PLS 480 plastic carrying case <i>Compatible with:</i> PLS 480
PLS-20963	PLS HVL100 plastic carrying case <i>Compatible with:</i> HVL 100
PLS-21010	PLS FT 90 plastic carrying case <i>Compatible with:</i> FT 90
PLS-60573	Canvas Pouch, PLS 180, 3, 5, 6 <i>Compatible with:</i> PLS 3R; PLS 3G; PLS 5R; PLS 5G; PLS 6R; PLS 6G; PLS 180R; PLS 180G; PLS 4, PLS 180 (old versions)
PLS-60597	Canvas pouch, PLS 480 <i>Compatible with:</i> PLS 480



# Accessories

## Targets

PLS Part #	Description
PLS-10090	PLS pendulum layout target
PLS RRT4	Red magnetic reflective target <i>Compatible with:</i> all red laser levels
PLS GRT4	Green magnetic reflective target <i>Compatible with:</i> all green laser levels
PLS-60620	PLS Reflective laser target for exterior <i>Compatible with:</i> all laser levels



**PLS-60620**  
Reflective laser target



**PLS-10090**  
Pendulum target

## Legacy accessories

### While supplies last

PLS Part #	Description
PLS-20791	PLS HVD505 detector clamp
PLS-60545	PLS HVD505 red point detector
PLS-20850	PLS HLD1000/HLD1000G detector clamp

PLS Part #	Description
PLS-21016	PLS HR, HVR, HDR rotary laser alkaline battery pack
PLS-21015	PLS HR, HVR, HDR rotary laser rechargeable battery pack
PLS-60532	PLS HVR505 battery charging cord, US
PLS-60518	PLS RC 505R rotary remote
PLS-60614	PLS RC 505G rotary remote
PLS-21024	PLS floor stand for PLS 4
PLS-20844	PLS floor stand for PLS 5

## Carrying cases and pouches

PLS Part #	Description
PLS-21500	PLS 3 rubber protective sleeve
PLS-21501	PLS 180 rubber protective sleeve
PLS-60572	PLS 4 carrying case
PLS-20798	PLS 5 carrying case
PLS-60515	PLS HVR 505 carrying case
PLS-20334N	PLS 3 canvas pouch
PLS-20801	PLS 5 canvas pouch



**PLS-21500**  
PLS 3 rubber protective sleeve



**PLS-21501**  
PLS 180 rubber protective sleeve



**PLS-20798**  
PLS 5 carrying case



**PLS-20334N**  
PLS 3 canvas pouch



## Our best-in-class warranty

PLS laser tools are **THE PROFESSIONAL STANDARD** and we stand behind that with our best-in-class warranty program. The PLS warranty covers product workmanship for 3 years. If you experience any issues with your PLS tools during the warranty period, except for obvious misuse or damage, your local dealer can provide a same-day replacement tool, ensuring you don't lose any time on the job.

Please visit the PLS website to process a warranty return directly through Fluke or to learn more about our rotary laser Authorized Service Provider (ASP) program. PLS authorized service providers are capable to provide in-warranty and out-of-warranty calibration and repair on our rotary laser family.

**WWW.PLSLASER.COM**

**Ask your dealer to demonstrate a PLS laser tool.**

**PLS, A Fluke Company**  
**Fluke Corporation**  
**PO Box 9090, Everett, WA 98206 U.S.A.**

©2018 Pacific Laser Systems, a Fluke Company. The PLS5, PLS4, PLS3, PLS180 and PLS FT90 are registered trademarks of PLS (Pacific Laser Systems).

Specifications subject to change without notice.  
11/2018 6010158f-en

