

PBA series

Piezo switches

New!

Distinctive features - Specifications - Overview

- Sealed to IP 68 (switches mounted on panel)
- Easy to clean metal surface
- Long life
- Ring or dot illumination

ELECTRICAL SPECIFICATIONS

- Rated voltage : 5V to 24 VAC/DC max.
- Rated current : 0,2A to 1A max.
- Switch resistance ON : 10Ω max.
- Switch resistance OFF : 5MΩ min.
- Switch capacitance : 25pF
- LED : 10mA 5VDC

MATERIALS

- Case : aluminium, anodized or stainless steel
- Terminals : multi-wire leads AWG24, length 300 mm (11.81)

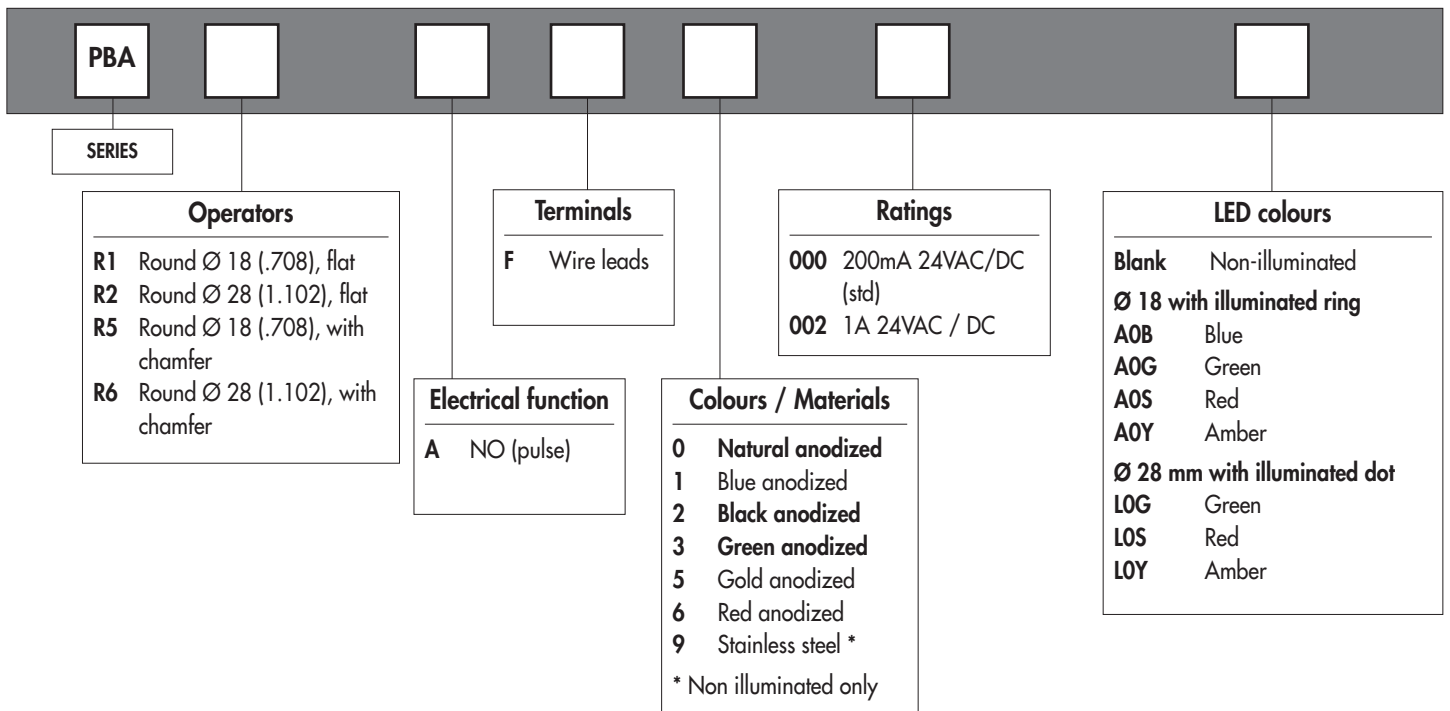
GENERAL SPECIFICATIONS

- Operating force : 2 to 6N
- Life expectancy : 50 million cycles
- Operating temperature :
Standard : -20°C to +75°C
On request : -40°C to +125°C
- EMI or RFI effect : none
- Sealing : IP 68 per IEC 529 (switches mounted on panel)



Standard hardware supplied :
1 hex nut U4116 (19 mm ac. flats) or
1 hex nut U6440 (25 mm across flats)

Dimensions : first dimensions are in mm while inches are shown as bracketted numbers.

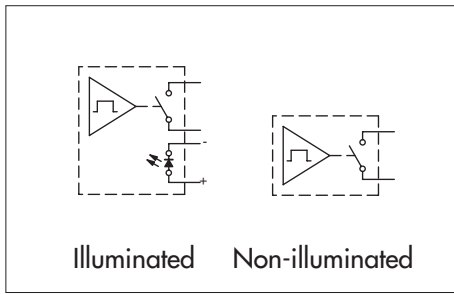


PBA series

Piezo switches

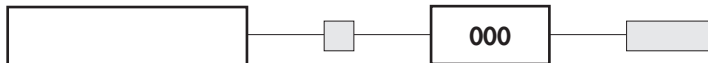
New!

Bushing Ø 16 - illuminated and non-illuminated



- Panel cut-out : Ø 16,2 mm (.637)

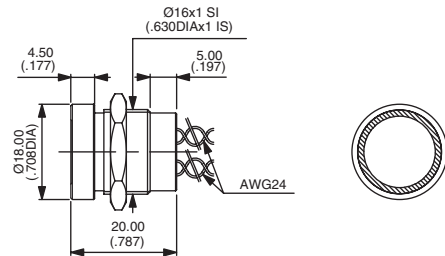
MODEL
STRUCTURE



With illuminated ring



Flat operator
PBAR1AF

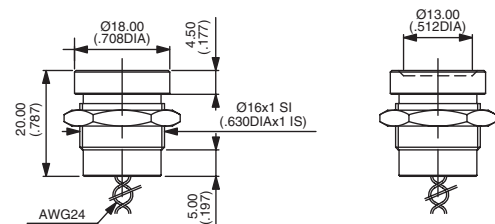


Wire colours : red : contact, yellow : LED anode (+), blue : LED cathode (-)

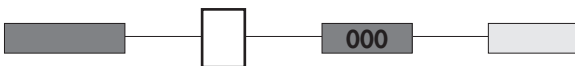
Non-illuminated



Flat operator
PBAR1AF
With chamfer
PBAR5AF



BUSHING COLOURS / MATERIALS



0 : natural anodized aluminium - 1 : blue anodized alum. - 2 : black anodized alum. - 3 : green anodized alum.
5 : gold anodized alum. - 6 : red anodized alum. - 9 : stainless steel (non-illum. only)

LED COLOURS



Blank : non-illuminated

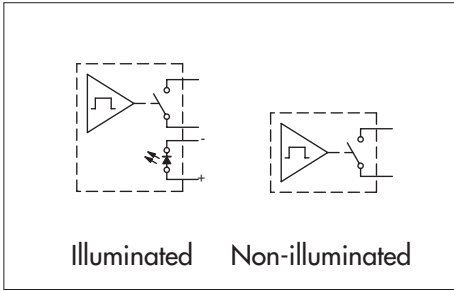
A0B : blue - A0G : green - A0S : red - A0Y : amber

PBA series

Piezo switches

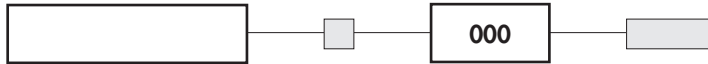
New!

Bushing $\varnothing 22 (.866)$ - illuminated and non-illuminated



• Panel cut-out : $\varnothing 22,2 \text{ mm} (.874)$

MODEL STRUCTURE

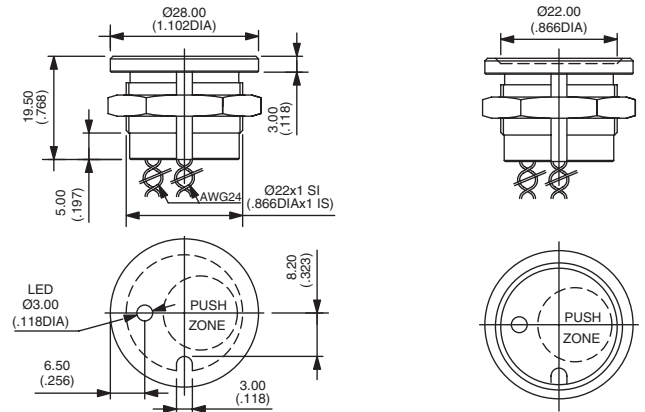


Wire colours : red : contact, yellow : LED anode (+), blue : LED cathode (-)

With illuminated dot



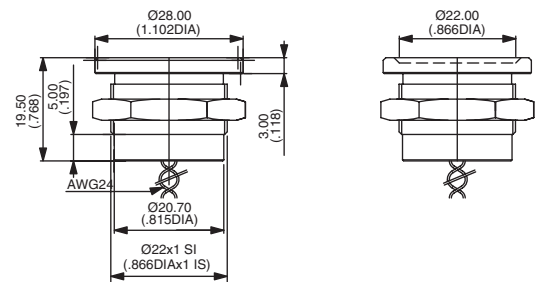
Flat operator
PBAR2AF
With chamfer
PBAR6AF



Non-illuminated



Flat operator
PBAR2AF
With chamfer
PBAR6AF



BUSHING COLOURS / MATERIALS



0 : natural anodized aluminium - 1 : blue anodized alum. - 2 : black anodized alum. - 3 : green anodized alum.
5 : gold anodized alum. - 6 : red anodized alum. - 9 : stainless steel (non-illum. only)

LED COLOURS



Blank : non-illuminated

LOG : green - LOS : red - LOY : amber