

# PROJECT CASES

## Project Case w/ Battery Compartment

These are low profile hand held cases with such internal features as PCB (printed circuit board) standoffs, slots for PCB, and battery compartment. These cases are ideal for Remote Controls, Audio/Video Transmitters, Security Systems, etc. Made of high impact ABS plastic. Available in Black or Light Gray. Dimensions: 4.37" L X 3.25" W X 1.5" H. 9V battery compartment



No. **PB520** Black  
No. **PB524** Gray

## Project Case w/ Battery Compartment

This convenient sized case has a sloped face area which measures 4" X 2.5" with a precut hole. There is a solid insert for the cutout on which you can mount your own components. The case has internal PCB standoffs, & rubber feet. These cases are ideal for keyboards, controllers, test instruments, etc. They are constructed from High Impact ABS plastic and are available in Black or Gray. Dimensions: 7.44" L x 4.11" W x 1.30" H (at the main part of the case.). 9V battery compartment



No. **PB530** Black  
No. **PB534** Gray

## Plastic Boxes with Aluminum Lids

Black ABS plastic boxes with aluminum lid. Resists breaking and easy to drill.

Part No.	L	W	H
PB140	3.0"	2.0"	1.0"
PB145	4-5/16"	2-1/4"	3/4"



### With internal PC Board slots

Part No.	L	W	H
PB160	4-1/8"	2-1/8"	1-1/2"
PB165	5.0"	1-3/8"	1-1/2"
PB150	4.0"	3.0"	1-1/2"
PB170	5-3/4"	3-5/16"	2.0"
PB155	5-7/8"	4.0"	2-3/16"
PB175	7.0"	4-5/16"	2-3/8"

## Plastic Instrument Cases with Plastic Lid

These instrument cases are made of ABS plastic with plastic lid and internal slots to hold PC boards.

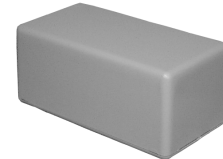
### Black

Part No.	L	W	H
PB100	3-1/4"	2-1/8"	1-1/4"
PB110	5-1/8"	2-3/4"	1-3/4"
PB120	6-1/4"	3-3/4"	2-1/8"
PB130	7-3/4"	4-3/8"	2-3/8"



### Grey

Part No.	L	W	H
PB180	4.0"	2.0"	1-1/2"
PB185	5.0"	2-1/2"	1-1/2"
PB190	5-3/4"	3-5/16"	2.0"
PB195	7.0"	4-5/16"	2-3/8"



## Sealed ABS Enclosures

These versatile cases have many uses in the electrical and electronic industries. They are easily drilled or punched, making them ideal as circuit enclosures and junction boxes.



### External Dimensions

Part No.	L	W	H
PB404	4.5" x	2.55" x	1.158"
PB411	4.5" x	3.54" x	2.165"
PB413	6.75" x	4.75" x	2.165"

### Features

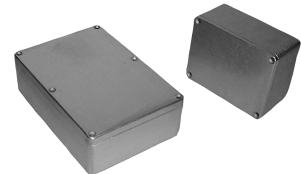
- >High impact ABS material molded in dark grey color.
- >Lids & bases have tongue and groove seal ing system with a neoprene gasket.
- > Wall mounting holes and lid fixing screws are outside sealing area thus preventing the ingress of dust and moisture.
- >Designed to meet IP65 of IEC529 and NEMA 4 specifications for dust & moisture.
- >Internal guide slots for mounting PC boards vertically
- >Bosses on internal base allows fixing of PC boards horizontally or for connection of term inals, etc. into threaded brass inserts.
- >Lid fixing screws are M4 stainless steel (non -magnetic) into threaded brass inserts.
- > Operating temperatures: -20°-+80°C

## Sealed Die-Cast Aluminum Enclosures

These enclosures are ideal for housing sensitive electronic assemblies, pneumatic, hydraulic and electrical devices in commercial and industrial environments providing effective shielding of EMI & RFI signals.

### External Dimensions

Part No.	L	W	H
PB306	4.5" x	2.55" x	1.180"
PB313	4.5" x	3.54" x	2.165"
PB320	6.75" x	4.75" x	2.165"



### Features & Specifications

- >Die-cast aluminum alloy, resistant to atmos pheric and marine corrosion. In natural finish
- >Lids incorporates a recessed oil resistant neo prene gasket.
- >Wall mounting holes and lid fixing screws are outside the sealing area thus preventing the ingress of dust & moisture.
- >Designed to meet IP65 of IEC529 and NEMA 4 specifications for dust & moisture.
- >Internal guide slots for mounting PC boards vertically
- >Bosses on internal base allows fixing of PC boards horizontally or for connection of earth grounding terminals, etc.
- >Lid fixing screws are recessed captive screws, M4 stainless steel (non -magnetic)
- >Screw holes for lid mounting are roll threaded.
- >Ground screw and washer provided are copper-plated.

