

REVISIONS			
ZONE	REV.	DESCRIPTION(S)	DATE
-	M	ECO 20153	04.17.07

REV.	
DRAWING NO.	P651

SEE SHEET 2 OF 2 FOR CONFIGURATIONS

P/N	APPLICABLE NOTE(S)	CABLE TYPE(S)	Ø A	FIGURE(S)
-1CC	1	Ø .047 SEMI-RIGID CABLE	.049 MIN	3
-2CC	2	Ø .085 SEMI-RIGID CABLE	.085 MIN	1
-3CC	1	Ø .047 MICROPOROUS CABLE	.047 MIN	3
-4CC	2	Ø .085 MICROPOROUS CABLE	.085 MIN	1
-5CC	1	Ø .047 SEMI-RIGID CABLE	.047 MIN	4
-6CC	2	Ø .085 SEMI-RIGID CABLE	.085 MIN	2
-7CC	1	Ø .047 MICROPOROUS CABLE	.047 MIN	4
-8CC	2	Ø .085 MICROPOROUS CABLE	.085 MIN	2
-9CC	3,4	Ø .085 MICROPOROUS CABLE	.085 MIN	1
-10CC	3,4	Ø .085 SEMI-RIGID CABLE	.085 MIN	1

Note(s):

- Center conductor and dielectric stop to be packaged and shipped unassembled.
- Center conductor to be packaged and shipped unassembled.
- Mechanically captivated contact.
- Part No. P651-9CC and -10CC are for low frequency application only.
4.1 Frequency Range: DC to 6.0 GHz.

MATERIAL(S):	ELECTRICAL(S):	MECHANICAL:	ENVIRONMENTAL:																												
Body, Center Conductor, EMI Ring and Anti-Rock Ring: BeCu alloy per ASTM B-196. Insulator: PTFE per ASTM -D-1710. Dielectric Stop**: Torlon per Mil-P-46179A. Conductive EMI Gasket: Silicone per Mil-G-83528.	Impedance: 50 ohms nominal. Frequency Range: DC to 40.0 GHz, except -9CC and -10CC (See Note 4). VSWR: 1.05 + .005 X f (GHz). Insertion Loss: .05 X √f (GHz). Working Voltage: 335 Vrms at sea level. DWV: 500 Vrms min at seal level. 125 Vrms at 70, 000 ft. RF HiPot Voltage: 325 Vrms min at sea level. Corona Level: 190 Vrms min at 70,000 ft. Insulation Resistance: 5,000 megohms min. Contact Resistance: Center Contact: 6.0 milliohms max. Outer Contact: 2.0 milliohms max Permeability: Less than 2.0 mu. R.F. Leakage: -80 dB min DC to 3 GHz. -65 dB min from 3.5 to 26.5 GHz.	MECHANICAL: Interface Dimension: Per Mil-Std-348. Connector Durability: 100 cycles min with Full Detent. 500 cycles min with Limited Detent. 1000 cycles min with Smooth Bore. Center Contact Retention: 1.5 pound min axial force. Force To Engage: 15 pounds max with Full Detent. 10 pounds max with Limited Detent. 2 pounds max with Smooth Bore. Force To Disengage: 5 pounds min with Full Detent. 2 pounds min with Limited Detent. .5 pound min with Smooth Bore.	ENVIRONMENTAL: Temperature Range: -65°C to +165°C. Thermal Shock: Mil-Std-202, Method 107, Test Cond. B, except high temp to be +165°C or maximum high temp of the cable. Moisture Resistance: Mil-Std-202, Method 106, except step 7b shall be omitted. Resistance shall be 1,000 megohms within 5 minutes after removal from humidity. Corrosion: Mil-Std-202, Method 101, Test Cond. B. Vibration: Mil-Std-202, Method 204, Test Cond. D. Shock: Mil-Std-202, Method 213, Test Cond. I. Solderability: Mil-Std-202, Method 208.																												
FINISH(ES): Body, Center conductor, EMI Ring and Anti-Rock Ring: Gold plate per ASTM B-488 over nickel under plate per AMS-QQ-N-290.	APPLICABLE TENSOLITE DOCUMENTS <table border="1"> <tr> <th>WORK STD</th> <th>PROD INST</th> <th>ASST INST</th> </tr> <tr> <td>NA</td> <td>NA</td> <td>AI-292 AI-300</td> </tr> </table>	WORK STD	PROD INST	ASST INST	NA	NA	AI-292 AI-300	<table border="1"> <tr> <th>APPROVAL INITIALS</th> <th>MATERIAL</th> <th>DATE</th> <th>SIZE</th> <th>SPECIFICATION</th> <th>PROCUREMENT</th> </tr> <tr> <td>BRD</td> <td>P-MAO</td> <td>11/09/93</td> <td></td> <td>HIGH PERFORMANCE CABLES # INTERCONNECT SYSTEMS Long Beach, California 90815</td> <td></td> </tr> </table>	APPROVAL INITIALS	MATERIAL	DATE	SIZE	SPECIFICATION	PROCUREMENT	BRD	P-MAO	11/09/93		HIGH PERFORMANCE CABLES # INTERCONNECT SYSTEMS Long Beach, California 90815		<table border="1"> <tr> <th>TOLEANCES AND NOTES EXCEPT AS NOTED</th> <th>SCALE</th> <th>TITLE</th> <th>SHEET</th> <th>OF</th> </tr> <tr> <td> DIMENSIONS ARE IN INCHES. LINEAR .XX .XX ±.015 ANGULAR ± 1/2 FRACTION ± 1/32 1. MACHINE FINISH: <input checked="" type="checkbox"/> RMS. 2. BREAK ALL SHARP EDGES .003 MAX. 3. MACHINED FILLETS .005 MAX. 4. MACHINED SURFACES SQUARE TO RESPECTIVE AXIS WITHIN .005 INCHES PER INCH. 5. ALL DIMENSIONS UNLESS OTHERWISE SPECIFIED RELATIONSHIP FOR A SPECIFIED PURPOSE AND THE RECORD ADHERES TO THE DIMENSIONS AND TOLERANCES SHOWN. 6. DIMENSIONS TO BEAS BEFORE PLATING. 7. CHAMFERS TO BEAS BEFORE PLATING. 8. THREADS PER MIL-208. 9. DIMENSIONS TO BEAS UNLESS OTHERWISE SPECIFIED. 10. REMOVE ALL BURRS. </td> <td>10:1</td> <td>SMP FEMALE STRAIGHT TO Ø .085 SEMI-RIGID OR LOW LOSS CABLE</td> <td>1</td> <td>2</td> </tr> </table>	TOLEANCES AND NOTES EXCEPT AS NOTED	SCALE	TITLE	SHEET	OF	DIMENSIONS ARE IN INCHES. LINEAR .XX .XX ±.015 ANGULAR ± 1/2 FRACTION ± 1/32 1. MACHINE FINISH: <input checked="" type="checkbox"/> RMS. 2. BREAK ALL SHARP EDGES .003 MAX. 3. MACHINED FILLETS .005 MAX. 4. MACHINED SURFACES SQUARE TO RESPECTIVE AXIS WITHIN .005 INCHES PER INCH. 5. ALL DIMENSIONS UNLESS OTHERWISE SPECIFIED RELATIONSHIP FOR A SPECIFIED PURPOSE AND THE RECORD ADHERES TO THE DIMENSIONS AND TOLERANCES SHOWN. 6. DIMENSIONS TO BEAS BEFORE PLATING. 7. CHAMFERS TO BEAS BEFORE PLATING. 8. THREADS PER MIL-208. 9. DIMENSIONS TO BEAS UNLESS OTHERWISE SPECIFIED. 10. REMOVE ALL BURRS.	10:1	SMP FEMALE STRAIGHT TO Ø .085 SEMI-RIGID OR LOW LOSS CABLE	1	2
WORK STD	PROD INST	ASST INST																													
NA	NA	AI-292 AI-300																													
APPROVAL INITIALS	MATERIAL	DATE	SIZE	SPECIFICATION	PROCUREMENT																										
BRD	P-MAO	11/09/93		HIGH PERFORMANCE CABLES # INTERCONNECT SYSTEMS Long Beach, California 90815																											
TOLEANCES AND NOTES EXCEPT AS NOTED	SCALE	TITLE	SHEET	OF																											
DIMENSIONS ARE IN INCHES. LINEAR .XX .XX ±.015 ANGULAR ± 1/2 FRACTION ± 1/32 1. MACHINE FINISH: <input checked="" type="checkbox"/> RMS. 2. BREAK ALL SHARP EDGES .003 MAX. 3. MACHINED FILLETS .005 MAX. 4. MACHINED SURFACES SQUARE TO RESPECTIVE AXIS WITHIN .005 INCHES PER INCH. 5. ALL DIMENSIONS UNLESS OTHERWISE SPECIFIED RELATIONSHIP FOR A SPECIFIED PURPOSE AND THE RECORD ADHERES TO THE DIMENSIONS AND TOLERANCES SHOWN. 6. DIMENSIONS TO BEAS BEFORE PLATING. 7. CHAMFERS TO BEAS BEFORE PLATING. 8. THREADS PER MIL-208. 9. DIMENSIONS TO BEAS UNLESS OTHERWISE SPECIFIED. 10. REMOVE ALL BURRS.	10:1	SMP FEMALE STRAIGHT TO Ø .085 SEMI-RIGID OR LOW LOSS CABLE	1	2																											

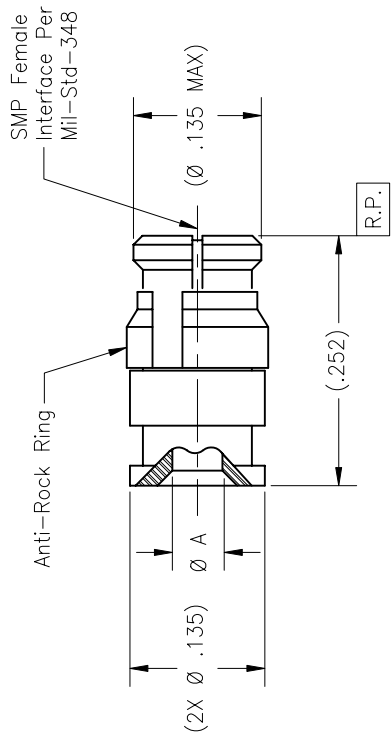


FIG. 1

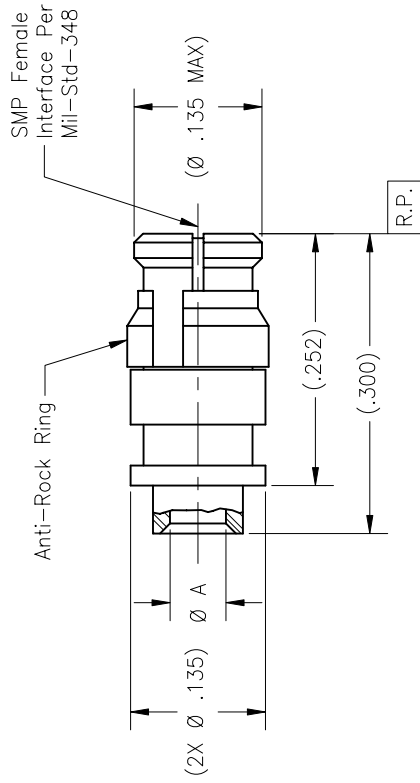
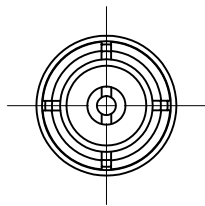


FIG. 3

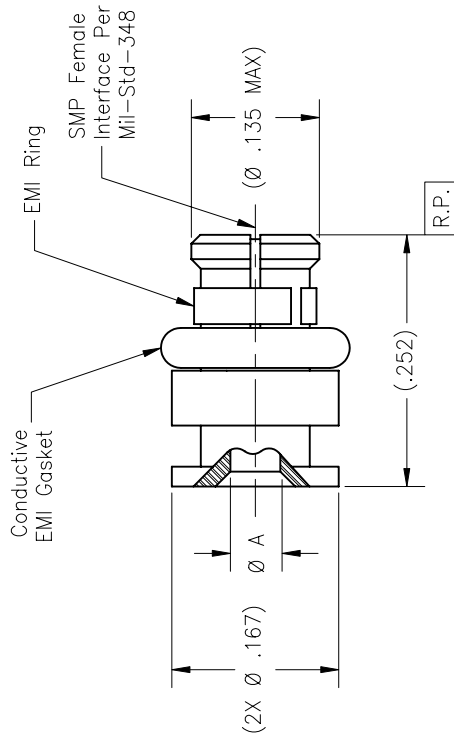
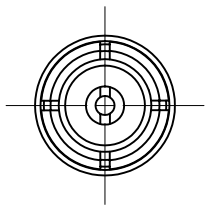


FIG. 2

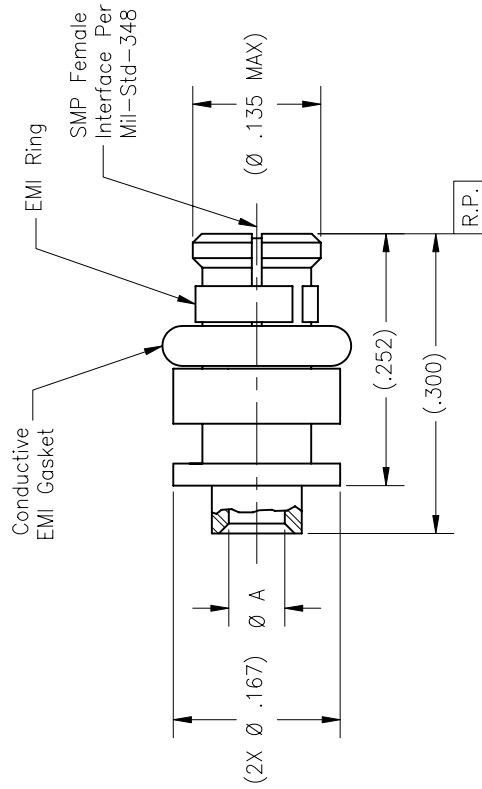
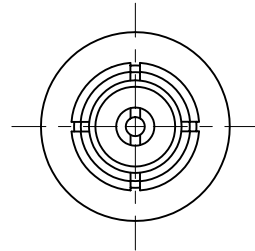


FIG. 4

